

# COpilot

Colorado Professional Institute for Learning Online Together



# [www.ceacopilot.org](http://www.ceacopilot.org)

## **Spring 2022 Courses**



# A bit about COpilot

Colorado teachers and education support professionals are deeply committed to every student's success. We want all students to achieve their full potential as individuals and become productive citizens who make positive contributions to society.

We believe that educators provide the stable, nurturing, inspiring environment that makes it possible to teach each student and provide individual attention to each student's learning needs. To this end, we work to ensure that every student has a qualified, caring educator.

We believe that we must change the way educators are recruited, trained, evaluated, supported, and held accountable. We believe we must raise the bar for what it means to be a quality educator by focusing on preparing new educators for the classroom, attracting and retaining educators, providing continuous, high quality professional development for all educators, and promoting effective teachers and quality educators.

We believe that COpilot is one key to achieving these core areas of professional excellence. Through expanding your learning opportunities, you will ensure that all students in Colorado public schools have the benefit of qualified, caring, committed educators throughout their school years.

***For more information or if you have questions, please contact us at [ceacopilot@coloradoea.org](mailto:ceacopilot@coloradoea.org)!***

---

## Frequently Asked Questions (FAQs):

### ***How do I sign up for a COpilot account?***

To create a COpilot account, visit [www.ceacopilot.org](http://www.ceacopilot.org), click Log In and either verify your Association membership or create a guest account. This easy process doesn't take more than 30 seconds!

### ***How much time does a class take?***

Most COpilot classes are 15 instructional hours spread over five or six weeks. Students should expect to spend about three hours per week doing class activities.

### ***Can I earn credit, clock hours, and a certificate?***

The answer is a resounding "Yes!" Nearly all of the classes on COpilot qualify for graduate credit from Adams State University. All of the classes are eligible for license renewal hours through the Colorado Department of Education. At the conclusion of each class, you will receive a certificate of completion for your records.

### ***Can I get the syllabus for the class before making a decision?***

Absolutely! Just email the Director of Learning Services, Casey Kilpatrick ([ckilpatrick@coloradoea.org](mailto:ckilpatrick@coloradoea.org)), for that information.

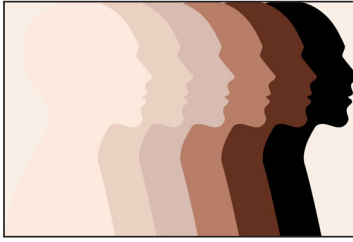
### ***Can my district use COpilot for its professional development?***

CEA has worked hard to make sure districts in partnership with the local association can use COpilot to run all of their professional development. We do not charge districts to use the platform. Instead, our requirement is that the district and local association reach an agreement that dictates the school district will pay members who facilitate the classes a fair stipend. For more information about this kind of opportunity, please contact Casey Kilpatrick at CEA ([ckilpatrick@coloradoea.org](mailto:ckilpatrick@coloradoea.org)).

### ***How are classes structured?***

All of our classes are fully facilitated, which means you'll have a trained CEA member leading you and teachers from across Colorado through the content. Our classes are time-bound so that the facilitation makes sense. Through using this mostly synchronous method, teachers can more easily collaborate with each other, share experiences, and receive coaching as they practice strategies in their classrooms.

# Spring 2022 Class List



## **An Equity Framework for Culturally and Responsive Literacy**

In *Cultivating Genius*, Dr. Ghodly E. Muhammad presents a four-layered equity framework—one that is grounded in history and restores excellence in literacy education. This framework, which she names, Historically Responsive Literacy, was derived from the study of literacy development within 19th-century Black literacy societies. The framework is essential and universal for all students, especially youth of color, who traditionally have been marginalized in learning standards, school policies, and classroom practices.

*Course dates: January 10 - February 6; February 14 - March 14*

*Cost: \$45 (member) or \$145 (non-member) | Available for 1 graduate credit through ASU*

*Facilitator: Janet Estrada (Denver Classroom Teachers' Association)*



## **Time Management for the Educator, Counselor, and Administrator**

Can't find the time for a moment to yourself? Feeling pressured and like you need to reset? This class gives you a set of strategies to help you make sure you're taken care of so you can take care of others in your important role in education.

*Course dates: January 10 - February 6; March 14 - April 11*

*Cost: \$90 (member) or \$190 (non-member) | Available for 2 graduate credits through ASU*

*Facilitator: Elizabeth Sedalnick (District Twelve Educators' Association)*



## **Mental Health for Our Students: The Top 5 Struggles Our Students Face Today**

Students today are facing such a different set of struggles than we did when we were in school. This course focuses and introduces the five major topics that kids deal with today including (but not limited to) bullying, mental health, suicide, stress, and inequity. In this class we will work to understand and find a set of tools to help our students navigate through this new age with support from us. No books needed, all materials are included.

*Course dates: January 10 - February 13; April 4 - May 9*

*Cost: \$90 (member) or \$190 (non-member) | Available for 2 graduate credits through ASU*

*Facilitator: Elizabeth Sedalnick (District Twelve Educators' Association)*



## **Rising Strong: How the Ability to Reset Transforms the Way We Live, Love, Parent, and Lead**

As educators we are constantly interacting with other people and are in situations that may not always go the way we expected. It is how we react to these people and the situations that make our path either clear or muddy. In this book study we will study how to use Brene Brown's "Rising Strong Process" in our daily lives which includes: The Reckoning: walking into our story, The Rumble: owning our story, and The Revolution: writing a new ending and changing how we engage with the world.

*Course dates: January 7 - February 13*

*Cost: \$45 (member) or \$145 (non-member) | Available for 1 graduate credit through ASU*

*Facilitator: Kim McLachlan (District Twelve Educators' Association)*

**All class dates are subject to change based on facilitator availability. All classes are subject to cancellation if fewer than five students enroll by the official class start date.**

---

**Follow and like COpilot on social media!**



CEA COpilot



@cea\_copilot



#cea\_copilot



## Resilient Educators: What You Can Learn About Yourself in Order to Survive the School Year

Do you want to get through your next school year a bit more smoothly, with confidence, self awareness and emotional resilience? You can learn strategies that will help you get a fresh start before you go back to the classroom! Join me in working through multiple activities from Elena Aguilar's *Onward* workbook. Let's gather some tools to take care of ourselves as well as our students!

*Course dates: January 10 - February 13*

*Cost: \$45 (member) or \$145 (non-member) | Available for 1 graduate credit through ASU*

*Facilitator: Kim McLachlan (District Twelve Educators' Association)*



## The Boy Who Raised as a Dog Book Study

We will do a book study on *The Boy Who Was Raised as a Dog* to discuss trauma, how it affects children, and how we as educators can understand this and provide simple ideas to use in our relationships with all kids.

*Course dates: January 10 - February 13; April 4 - May 8*

*Cost: \$45 (member) or \$145 (non-member) | Available for 1 graduate credit through ASU*

*Facilitator: Jenny Shoen (Littleton Education Association)*



## Positive Mindset Habits for Teachers: 10 Ways to Reduce Stress, Increase Engagement and Reignite your Passion for Teaching

In this book study, educators will learn 10 strategies that increase their happiness, reduce their stress and enhance their passion in the classroom. The course will focus on how educational professionals can use growth mindset to use practical and tangible ways to improve their craft and bring more joy into their lives and classrooms.

*Course dates: January 10 - February 6*

*Cost: \$45 (member) or \$145 (non-member) | Available for 1 graduate credit through ASU*

*Facilitator: Stephanie Fast (Littleton Education Association)*



## Literacy Strategies for the Diverse Classroom Using Edpuzzle

Teachers will actively participate in online learning to further develop their understanding of various literacy strategies to engage specialized populations within the classroom. The application of Edpuzzle will incorporate educational videos related to the teacher's specific content area to create an engaging and interactive learning environment. Teachers will learn how to utilize specific tools within Edpuzzle to reach students who are DHH, ELL, LD, etc.

*Course dates: January 10 - February 13; February 27 - April 3*

*Cost: \$90 (member) or \$190 (non-member) | Available for 2 graduate credits through ASU*

*Facilitator: Caroline Davis (District Twelve Educators' Association)*



## Personal Financial Literacy for Colorado Educators: Making the Most of Your PERA Pension, Employer Benefits, and Investments

Being an educator is a very difficult job. It's even more difficult if you're worried about your personal financial situation. Many educators are confused and/or intimidated by finances, and "don't know what they don't know". This stress can't help but impact their job performance. So this class is designed to not only make a difference in your personal lives, but if it can help you relieve that stress, it will make you even better educators and do an even better job of meeting the needs of our students in these challenging times. This class will also help prepare you to better teach the Colorado Academic Standards for K-12 Personal Financial Literacy (PFL). It is also likely that you will learn something that will more than cover the cost of this course!

*Course dates: January 14 - March 6; March 11 - February 1*

*Cost: \$60 (member) or \$160 (non-member) | Available for 2 graduate credits through ASU*

*Facilitator: Karl Fisch (Colorado Education Association - Retired)*





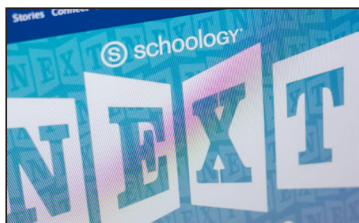
## Anger Management for Educators

Anger is a normal emotion that everyone feels from time to time. This class, with the aid of *The Cognitive Behavioral Workbook for Anger: A Step-By-Step Program for Success*, will help you to use a variety of tools, exercises, and self-mastery methods to overcome destructive anger. You will be able to recognize and overcome anger triggers, extinguish anger in the heat of the moment, stop the cycle of blame, tolerate negative emotions, deal with difficult people, and repair broken relationships.

*Course dates: January 17 - February 27; March 14 - April 11*

*Cost: \$135 (member) or \$235 (non-member) | Available for 3 graduate credits from ASU*

*Facilitator: Catherine Lee (District Twelve Educators' Association)*



## Creating an Interactive Schoology Website

In this class, you will learn to set up a class through Schoology. You will be able to assign lessons that can include videos, documents, tests, quizzes, and classroom discussions. You can take attendance and set up a grade book. You can use Schoology as a way to have a blended classroom or to purely house what you've done so that students can check out what they have missed while they were absent. You can archive your class and then copy what you've created for the following year so that you won't have to recreate the wheel.

*Course dates: January 17 - February 14; March 14 - April 11*

*Cost: \$90 (member) or \$190 (non-member) | Available for 2 graduate credits through ASU*

*Facilitator: Catherine Lee (District Twelve Educators' Association)*



## Creating Educational Videos to Enhance Student Learning Inside and Outside of the Classroom

This class will help you to create videos that you can post to your websites. The videos will allow you to have a flipped classroom, a blended learning classroom, or merely have videos on your website for those students who are absent. It can be as if there are multiple educators in one classroom if used during class. Students can learn at their own pace because they can watch the video as many times as they need to. It allows the educator to be free to work in small groups or one on one with students while the rest of the class can move ahead.

*Course dates: January 17 - February 14; March 14 - April 11*

*Cost: \$90 (member) or \$190 (non-member) | Available for 2 graduate credits through ASU*

*Facilitator: Catherine Lee (District Twelve Educators' Association)*



## Digital Tools for Promoting Creativity

Stressed out about how to get your students to think outside the box in this new online learning environment? In this course, teachers will learn how to utilize free online tools to promote creativity in your classes- no matter what subject you teach. Tools include: Pinterest, Canva, Instagram/Twitter, and Google Sites. Teachers will learn the basics about each of these tools, and submit an example how they could use them in a lesson as either a research, presentation, or as a summative evaluation tool. This course is designed to help you create fresh assignments that help further develop students as 21st Century creative thinkers and problem solvers.

*Course dates: January 17 - February 27*

*Cost: \$90 (member) or \$190 (non-member) | Available for 2 graduate credits through ASU*

*Facilitator: Drew Mulligan (Jefferson County Education Association)*



## Branching Google Forms for Formative Assessment

In this course, teachers will actively participate in online learning to further develop their understanding of Google Forms, assessment, feedback, and analyzing data. Specific applications will be made to practice, as teachers will create a template to help meet the needs of their students.

*Course dates: January 17 - February 13;*

*Cost: \$45 (member) or \$145 (non-member) | Available for 1 graduate credit through ASU*

*Facilitator: Brittany Osborn (Poudre Education Association)*



## Standards-Based Grading & Teacher Clarity

In this course, teachers will actively participate in online learning to further develop their understanding of Standards-based grading and John Hattie's *Visible Learning: Theory on Teacher Clarity*. Specific applications will be made to practice, as teachers will identify essential learnings from their academic standards, deconstruct the standards to create a Standards-based proficiency scale (rubric), and create an assessment task. This course is encouraged to be taken with teams, but it is not required.

*Course dates: January 17 - February 27*

*Cost: \$90 (member) or \$190 (non-member) | Available for 2 graduate credits through ASU*

*Facilitator: Brittany Osborn (Poudre Education Association)*



## Going Deeper with Standards-based Grading

In this course, teachers will actively participate in online learning to further develop their understanding of Standards-based grading. Teachers will continue the work of unpacking their identified essential standards to create proficiency scales (rubrics) and assessment tasks. Discussions will continue around standards-based grading in the classroom, communication, data analysis, and work habits. This course is encouraged to be taken with teams, but it is not required.

*Course dates: January 17 - February 27*

*Cost: \$90 (member) or \$190 (non-member) | Available for 2 graduate credits through ASU*

*Facilitator: Brittany Osborn (Poudre Education Association)*



## The Playful Classroom: The Power of Play for All Ages

In this class, participants will learn about play in the classroom! You will study the research behind play and how it affects the brain, social skills, increase in productivity and self esteem, decrease in student behaviors and so much more. You will apply lessons from the text and our online activities in your own classrooms as a lab where you get to try all sort of new play-based strategies with students.

*Course dates: January 17 - March 13*

*Cost: \$90 (member) or \$190 (non-member) | Available for 2 graduate credits through ASU*

*Facilitator: Barb Pedrett (Cherry Creek Education Association)*



## Choice Time: How to Deepen Learning Through Inquiry and Play

This class is going to allow participants to learn and have opportunities to practice what they learn in the text and apply it immediately to their classrooms the very next day. You will learn from each other and create choice-time centers that promote inquiry-based play. You will work on providing opportunities for children to play and be self-directed thinkers in reading, writing, math, and science!

*Course dates: January 17 - February 13*

*Cost: \$45 (member) or \$145 (non-member) | Available for 1 graduate credit through ASU*

*Facilitator: Barb Pedrett (Cherry Creek Education Association)*



## Culturally Responsive Teaching and the Brain

In this book study, students will learn that the achievement gap remains a stubborn problem for educators of culturally and linguistically diverse students. Culturally responsive pedagogy has shown great promise in meeting this need, but many educators still struggle with its implementation. In this book, Zaretta Hammond draws on cutting-edge neuroscience research to offer an innovative approach for designing and implementing brain-compatible culturally responsive instruction.

*Course dates: January 17 - February 20; March 7 - April 10*

*Cost: \$45 (member) or \$145 (non-member) | Available for 1 graduate credit through ASU*

*Facilitators: Skyler Zody (Aurora Education Association)*



## Restorative Practices: Part II

This course continues to build on the tools and practices learned in the *Introduction to Restorative Practices in Education* COpilot course. As this course is a continuation of practices taught in the introduction course, you must have taken that course or already have a background in restorative practices. The focus of this course includes: the informal conference, responding to scenarios, exploring more ways to use circles, and introducing games that use restorative philosophy. The informal conference is a practice that is used to identify what happened, the effects of an incident, and creating agreements to make repair to those impacted. These conferences can be used for friend 'drama,' social media issues, teacher/student and educator/educator conflicts, disruptive behavior, and Tier 1 and 2 behaviors. This class will also provide opportunities to further development of skills around facilitating circles, restorative conversations, and considering how RP is an antiracist practice.

*Course dates: January 17 - February 20*

*Cost: \$45 (member) or \$145 (non-member) | Available for 1 graduate credit through ASU*

*Facilitator: Kathy Zaleski (District Twelve Educators' Association)*



## Everyday Antiracism: Getting Real About Race in School

Everyday Antiracism is a book study that will identify acts of racism in our schools, expose educators to the ways in which others have handled the experience, and give actionable steps to addressing racism in any classroom or school. This book study is ideal for any educator with any degree of comfort talking with students about racially charged actions.

*Course dates: January 17 - February 28*

*Cost: \$45 (member) or \$145 (non-member) | Available for 1 graduate credit through ASU*

*Facilitator: April Leitshuh (District Twelve Educators' Association)*



## Integrating STEM and Literacy Using "Novel Engineering"

Educators will actively participate in online learning to further develop their understanding of integrating STEM in literacy using Novel Engineering. During a book study, participants will develop familiarity with the process and then construct their own learning progression to develop a novel engineering project for their classroom. This class is appropriate for teachers K-12 who teach literacy, science, and/or social studies.

*Course dates: January 17 - February 28*

*Cost: \$90 (member) or \$190 (non-member) | Available for 2 graduate credits through ASU*

*Facilitator: Jess Noffsinger (District Twelve Educators' Association)*



## Teacher Wellbeing and Self-Care

With teacher burnout at an all time high, what are you doing to take care of yourself so that you can be your best for you, your family, friends, and students? In this course we are going to dive deep into how to take care of ourselves, find meaning in teaching, and feeling like our efforts are worth it. The book, *A Little Guide for Teachers: Teacher Wellbeing and Self-care*, will help guide our thinking and learning. We will explore topics such as keeping your values and moral purpose at the forefront of your professional role, maintaining a sense of perspective, and managing your workload effectively and efficiently. We will also learn about handling stress, fostering peer relationships, and promoting agency within your role.

*Course dates: January 17 - February 13*

*Cost: \$45 (member) or \$145 (non-member) | Available for 1 graduate credit through ASU*

*Facilitator: Kyleene Pedrett (Cherry Creek Education Association)*

**All class dates are subject to change based on facilitator availability. All classes are subject to cancellation if fewer than five students enroll by the official class start date.**

## Follow and like COpilot on social media!



CEA COpilot



@cea\_copilot



#cea\_copilot





## Culturally and Linguistically Diverse History Makers

This class is geared for elementary teachers who want to celebrate the contributions of five culturally diverse individuals in American history. Educators will actively participate in building skills centered around the contributions of Mario Molina, Pura Belpre, Gyo Fujikawa, Teresa Carreno, and Jim Thorpe. Throughout this course, educators will see how to build a strong cross-curricular set of lessons geared to interests/needs of their own ELL students while supporting their students in language development, mapping skills, and critical thinking.

*Course dates: January 23 - February 26; March 20 - April 23*

*Cost: \$90 (member) or \$190 (non-member) | Available for 2 graduate credits through ASU*

*Facilitator: Christy Howard (Colorado Springs Education Association)*



## What's in Your Library? Evaluating Your Classroom Library for Cultural Sensitivity

Learners will gather insight on how to audit their classroom library looking at cultural, religious, and gender bias. As learners inventory their classroom student diversity, they will be able to better determine what should be added or deleted to better reach the diversity needs of their students' reading interests.

*Course dates: January 23 - February 26; March 20 - April 23*

*Cost: \$90 (member) or \$190 (non-member) | Available for 2 graduate credits through ASU*

*Facilitator: Christy Howard (Colorado Springs Education Association)*



## Executive Functioning Skills in Children and Adolescents

Executive functioning skills describe a person's ability to organize our behavior. Through the use of these skills, we can plan and organize activities, sustain attention, and persist to complete a task. Many students struggle with these skills and require additional support to help develop these skills. This course will look at interventions that can be used in the classroom to support students with the development of these executive functioning skills.

*Course dates: January 24 - February 28*

*Cost: \$90 (member) or \$190 (non-member) | Available for 2 graduate credits through ASU*

*Facilitator: Lindsay Rider (Brighton Education Association)*



## Teaching English Language Learners Across Content Areas

Have you ever wondered if all of your students are truly "getting it?" Do you want to enhance your lessons to engage all learners while at the same time enhancing instruction for your English Language Learners? In this class, teachers will engage in readings by Judie Haynes and Debbie Zacarian in order to learn to enhance their classroom and school environment and improve student academic language and literacy learning in language arts, math, science, and social studies, so that they can ensure all students are getting what they need to be successful in the classroom.

*Course dates: January 24 - February 28*

*Cost: \$45 (member) or \$145 (non-member) | Available for 1 graduate credit through ASU*

*Facilitator: Lindsay Rider (Brighton Education Association)*



## Redefining Reading

This course is designed to further educate K-5 teachers with a background of evidence-based reading knowledge. Participants will gain knowledge through articles, videos, and podcasts. Participants will show their learning through weekly application assignments and quizzes that require application and reflection of the week's content. Participants will receive many resources for explicit instruction for each component of reading, and will end the course with the creation of a READ Plan and final assessment.

*Course dates: January 24 - March 27*

*Cost: \$135 (member) or \$235 (non-member) | Available for 3 graduate credits from ASU*

*Facilitators: Leigh Ann Eucker (Poudre Education Association)*





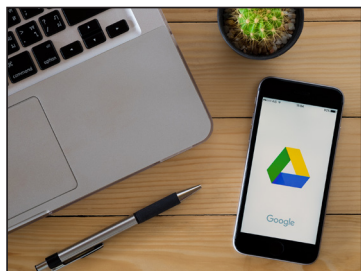
## Build an Awesome Class Website with Google Sites

Google Sites is a collaborative tool that allows you to easily create a website to publish course content and to share class materials with students and guardians. Sites offer an easy way to create pages and insert digital media so there is no need to know HTML or other programming languages, Google has mastered WYSIWYG (“what you see is what you get”). This course is designed to help educators build and design a website in Google Sites (or to revise their current Site). We will also explore different uses of Google Sites for both teachers and students. This course is appropriate for any educator who has working knowledge of the Google Suite of products and is willing to extend their knowledge. By the end of the course participants will have a working Google Site that they can use for their classroom.

*Course dates: January 24 - February 20*

*Cost: \$45 (member) or \$145 (non-member) | Available for 1 graduate credit through ASU*

*Facilitator: Erin-Rose Schneider (East Grand Education Association)*



## Google Level 1 Certification Training

This course is designed to provide educators with the confidence and understanding of how to deliver the Google suite within their classroom and workplace. Educators will engage in a collaborative learning environment with other colleagues examining how using technology in the classroom and work environment can contribute to student achievement.

*Course dates: January 24 - March 20*

*Cost: \$90 (member) or \$190 (non-member) | Available for 2 graduate credits through ASU*

*Facilitator: Robert Thompson (Colorado Education Association)*



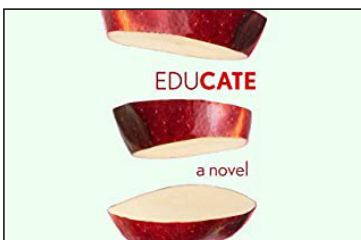
## Build a Culture of Feedback

Teacher learners will discover how to cultivate a rich culture of feedback in their classroom and school to improve student and teacher learning and efficacy. Each week will focus on a different element of feedback: foundations, teacher to student, student to student, student to teacher, and educator to educator. Participants will be presented with a variety of instructional techniques that can be directly applied or modified for all grade levels, K-12.

*Course dates: January 24 - February 27*

*Cost: \$45 (member) or \$145 (non-member) | Available for 1 graduate credit through ASU*

*Facilitator: Anne Sutton (Windsor-Severance Education Association)*



## Book Study — EduCate: A Novel

This course will be a book study of *EduCate: A Novel*, facilitated by the author who is also a middle school language arts teacher. Participants will engage in a weekly discussion board and individual reflection activities. In this novel, author and CEA Ambassador Fellowship alumni, Julie White blurs the lines between fact and fiction. The book was inspired by the events of 2020 and Julie wrote on the weekends while she was teaching middle school and thinks it would appeal to readers who want a time capsule of 2020-21. Together, we can connect to the novel and our shared experiences and process the historical time we are in. By the end of the course, you'll be inspired to share your story and voice!

*Course dates: January 24 - February 27*

*Cost: \$45 (member) or \$145 (non-member) | Available for 1 graduate credits through ASU*

*Facilitator: Julie White (Englewood Educators' Association)*

**All class dates are subject to change based on facilitator availability. All classes are subject to cancellation if fewer than five students enroll by the official class start date.**

## Follow and like COpilot on social media!



CEA COpilot



@cea\_copilot



#cea\_copilot



## Comprehension Strategies Using Peardeck

Educators will actively participate in online learning to further develop their understanding of various comprehension strategies to engage specialized populations within the classroom. The application of Peardeck will incorporate comprehension strategies related to the educator's specific content area to create an engaging and interactive learning environment. Educators will learn how to utilize specific tools within Peardeck to reach students who are ELL, LD, etc.

*Course dates: January 30 - February 27; April 3 - May 1*

*Cost: \$90 (member) or \$190 (non-member) | Available for 2 graduate credits through ASU*

*Facilitator: Caroline Davis (District Twelve Educators' Association)*



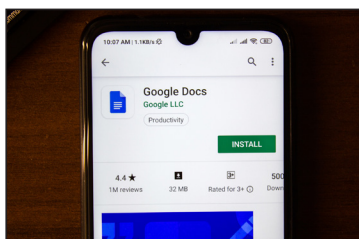
## Creating Interactive Virtual Field Trips

In this course, teachers will examine how to effectively plan, design, and create a virtual field trip using ThingLink. You'll explore the different ways to create interactive, engaging content that students can easily navigate and learn from. By the end of this course, you will have a variety of usable ThingLinks including an interactive virtual field trip that you could use in the remote, hybrid, or flipped classroom setting.

*Course dates: January 30 - February 27; April 3 - May 1*

*Cost: \$90 (member) or \$190 (non-member) | Available for 2 graduate credits through ASU*

*Facilitator: Caroline Davis (District Twelve Educators' Association)*



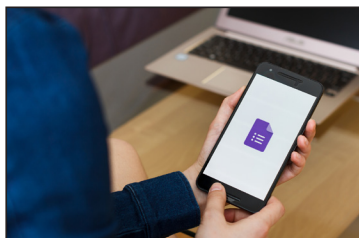
## Google Docs Basics

Educators will engage in online learning to initiate and/or continue to develop their basic understanding of Google Docs. The focus will be on skills that will enable teachers to create, distribute, and collaborate with colleagues and students using Google Docs. Educators will learn to utilize all basic features of Google Docs for both professional use and as a workshop model in the Google Classroom with students.

*Course dates: January 30 - February 27; March 28 - April 24*

*Cost: \$45 (member) or \$145 (non-member) | Available for 1 graduate credit through ASU*

*Facilitator: Elissa Brost (Colorado Springs Education Association)*



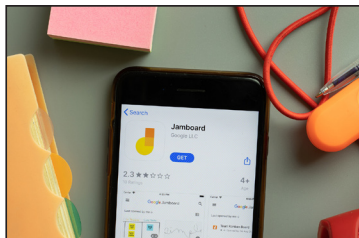
## Google Forms Basics

Educators will engage in online learning to initiate and/or continue to develop their basic understanding of Google Forms. The focus will be on skills that will enable teachers to create, distribute, and grade Forms utilized as formative assessments. Educators will investigate integrating curriculum, and other resources into their Forms, polling/survey features, and more. Specific focus will be how to utilize Google Forms in a Google Classroom.

*Course dates: January 30 - February 27; March 28 - April 24*

*Cost: \$45 (member) or \$145 (non-member) | Available for 1 graduate credit through ASU*

*Facilitator: Elissa Brost (Colorado Springs Education Association)*



## Google Jamboard Basics

Learners will learn to use and implement the multitude of options for Google Jamboard. Skills will emphasize whiteboard features, collaboration (adult and/or student), and polished and interactive presentations. Learners will collaborate on use in classrooms and with staff, both teacher and student-led uses.

*Course dates: January 30 - February 27; March 28 - April 24*

*Cost: \$45 (member) or \$145 (non-member) | Available for 1 graduate credit through ASU*

*Facilitator: Elissa Brost (Colorado Springs Education Association)*

**All class dates are subject to change based on facilitator availability. All classes are subject to cancellation if fewer than five students enroll by the official class start date.**



## Google Sheets Basics

Educators will engage in online learning to initiate and/or continue to develop their basic understanding of Google Sheets. The focus will be on skills that will enable teachers to create, distribute, and collaborate with colleagues and students using Google Sheets. Educators will learn to utilize all basic features of Google Sheets for both professional use and as a workshop model in the Google Classroom with students.

*Course dates: January 30 - February 27; March 28 - April 24*

*Cost: \$45 (member) or \$145 (non-member) | Available for 1 graduate credit through ASU*

*Facilitator: Elissa Brost (Colorado Springs Education Association)*



## Google Slides Basics

Educators will engage in online learning to initiate and/or continue to develop their basic understanding of Google Slides. The focus will be on skills that will enable teachers to create, distribute, and collaborate with colleagues using Google Slides. Teachers will learn to work beyond standard templates, creating custom presentations to facilitate instruction that utilizes multiple media and presentation choices.

*Course dates: January 30 - February 27; March 28 - April 24*

*Cost: \$45 (member) or \$145 (non-member) | Available for 1 graduate credit through ASU*

*Facilitator: Elissa Brost (Colorado Springs Education Association)*



## Teaching Like a Championship Coach

Teachers will actively participate in online learning to understand the similarities between coaching athletes and teaching students. As professionals, teachers must connect and work with students on a "human" level. Successful athletic coaches have mastered this art and science; as teachers, we can learn from their experience to better ourselves in our practice. This course is appropriate for teachers of all school levels; youth and high school sports and activities coaches; instructional coaches. Participants in this course will be reading from the selected text and participating in self-reflection and personal/professional growth activities.

*Course dates: January 31 - February 27*

*Cost: \$45 (member) or \$145 (non-member) | Available for 1 graduate credit through ASU*

*Facilitator: Stef Evilsizer (Littleton Education Association)*



## Grading for Equity

Grading for Equity: What It Is, Why It Matters, and How It Can Transform Schools and Classrooms is a book study that analyzes the flaws within traditional grading practices and methods that can be implemented in order to create more equitable grading systems. This book will reflect on existing grading practices in many classrooms and challenge teachers to adjust their current systems in order to grade students in an accurate and bias-resistant manner. This course is appropriate for teachers wanting to reflect on their grading practices, why they grade with the systems they use, and implement equitable changes to increase student accountability and grades that reflect a student's mastery of the class.

*Course dates: January 31 - March 6; March 21 - April 24*

*Cost: \$45 (member) or \$145 (non-member) | Available for 1 graduate credit through ASU*

*Facilitator: Kaitlyn Corcoran (Poudre Education Association)*



## Transgender and Gender Expansive Youth

This course is designed to help professionals in education better understand transgender and nonconforming youth, as well as how to support this vulnerable population. As our world evolves and changes, it behooves us to stay up with the current changes to understand, work with and support all students. Teachers will actively participate in online learning to further develop their understanding of the language used, needs of our student population, how to support transgender and nonconforming youth in our schools, and the law.

*Course dates: February 7 - March 7; April 4 - May 9*

*Cost: \$90 (member) or \$190 (non-member) | Available for 2 graduate credits through ASU*

*Facilitator: Elizabeth Sedalnick (District Twelve Educators' Association)*





## Lessons on Local Government: Local Issues Are Hot and Local Government Is Cool

Local Government is Cool! Learn to incorporate local government programs and issues in your elementary or secondary classroom. Issues like recycling, justice, water resource issues, school safety, testing, and park planning are terrific ways to engage students with local government. Local topics allow students in any grade to practice key citizenship skills and to make a difference. There is no better way to prepare students for civic life than with issues right out their back door. Experience Lessons on Local Government's (LOLG) River City Needs Water simulation, Local Government on Parade, and Local Leader in the Classroom Kit, plus other free resources. Teachers will engage with local leaders at lunch and receive a \$50 gift card for attending.

*Course dates: February 7 - March 7*

*Cost: \$45 (member) or \$145 (non-member) | Available for 1 graduate credit through ASU*

*Facilitator: Kent Willmann (Colorado Education Association - Retired)*



## Application of Language Acquisition for Differentiated & Diverse Learners

In this course teachers will share, discuss, and implement differentiated language learning techniques used in their classroom for diverse learners. Specifically focused on EL strategies, teachers will deepen their understanding to implement effective scaffolds and differentiation to increase engagement across all language domains.

*Course dates: February 7 - March 13*

*Cost: \$90 (member) or \$190 (non-member) | Available for 2 graduate credit through ASU*

*Facilitator: Emily Downs (Greeley Education Association)*



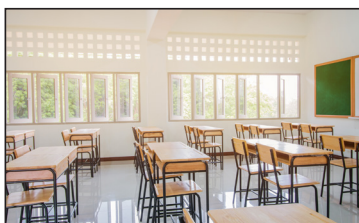
## The ELL Teacher's Toolbox

This practical, valuable resource provides hundreds of innovative and research-based instructional strategies that you can use to support all levels of English Language Learners in your classroom. We will use the text as a guide to explore new ways to support our ELL students, dive deeply into each of the 4 language domains: Reading, Writing, Speaking, and Listening, and discover new ways to provide important intervention for students in each of these domains. This resource will become one of your most used items in your professional library.

*Course dates: February 7 - March 20*

*Cost: \$45 (member) or \$145 (non-member) | Available for 1 graduate credit through ASU*

*Facilitator: Lindsay Rider (Brighton Education Association)*



## Lost at School: Why Our Kids with Behavioral Challenges are Falling Through the Cracks and How We Can Help Them

This book study will provide participants with an opportunity to explore the ways to help students with challenging behaviors be more successful at school and in life. The book works to help educators and parents see challenging student behaviors in more productive and empathetic ways by building relationships and finding non-punitive, proactive and collaborative solutions.

*Course dates: February 7 - March 13*

*Cost: \$45 (member) or \$145 (non-member) | Available for 1 graduate credit through ASU*

*Facilitator: Mary Robinson (District Twelve Educators' Association)*

**All class dates are subject to change based on facilitator availability. All classes are subject to cancellation if fewer than five students enroll by the official class start date.**

---

## Follow and like COpilot on social media!



CEA COpilot



@cea\_copilot



#cea\_copilot



## Maximizing Learning with Meaningful Tech Integration

This course moves beyond searching for the new shiny tech tool in education. The buzzwords on everyone's lips for the last decade have been "21st-century learning." Educators talk about incorporating technology into lessons on a regular basis, but are you doing it in a meaningful way? Using the SAMR model as a foundation, participants will learn how to leverage student learning through the use of technology integration.

*Course dates: February 7 - March 13*

*Cost: \$45 (member) or \$145 (non-member) | Available for 1 graduate credit through ASU*

*Facilitator: Cristina Vanzo (Moffat County Education Association)*



## The New Jim Crow Book Study

The New Jim Crow course is a book study that dives into the mass incarceration of predominantly African American men, along with other minorities and socio-economically disadvantaged groups in the United States. This book study will encourage much discussion, reflection, and sometimes uncomfortable conversations among the participants in the course to further understand the content. It is ideal for educators who are wanting to have a better understanding of the American incarceration system, the institutional racism many students carry with them to school, and to investigate solutions to alleviating mass incarceration.

*Course dates: February 7 - April 17*

*Cost: \$90 (member) or \$190 (non-member) | Available for 2 graduate credits through ASU*

*Facilitator: Kathy Zaleski (District Twelve Educators' Association)*



## Permission to Feel: Unlocking the Power of Emotion to Help Our Kids, Our Society and Ourselves Thrive

This course is a book study on Marc Brackett's best selling book, *Permission to Feel*. Based on research from the Yale Center for Emotional Intelligence, this course will focus on practical and research based five keys to emotional intelligence and how those impact education and learning. Educators will learn his technique known as "Ruler Training" and transform their emotional literacy.

*Course dates: February 7 - March 6*

*Cost: \$45 (member) or \$145 (non-member) | Available for 1 graduate credit through ASU*

*Facilitator: Stephanie Fast (Littleton Education Association)*



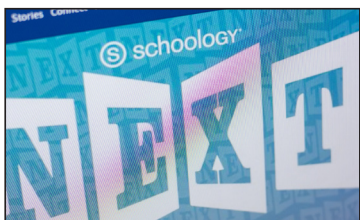
## Stress Management for Educators

Do you have stress in your life from work, family, friends, finances, health, technology, etc.? Do you feel burned out with all that you are asked to do? Is your current stress level okay, but you want methods to manage stress in the future? This class will help you learn how stress affects you in the short and long term, identify the stressors in your life, and practice techniques that take less than ten minutes to lower stress and boost the quality of life.

*Course dates: February 14 - March 14; April 4 - May 9*

*Cost: \$90 (member) or \$190 (non-member) | Available for 2 graduate credits through ASU*

*Facilitator: Catherine Lee (District Twelve Educators' Association)*



## Advanced Schoology: Take Your Skills to the Next Level

Educators will actively participate in online learning to further develop their Schoology page with a variety of engaging and interactive lessons and web design. By the end of this course, educators will be able to do the following: Create banners and buttons that link to a variety of websites; create interactive lessons using programs such as Edpuzzle or Flipgrid and embed them into the Schoology website; create tutorial videos for students and families about how to navigate your website; create a variety of assessments and activities.

*Course dates: February 14 - March 14; April 4 - May 9*

*Cost: \$90 (member) or \$190 (non-member) | Available for 2 graduate credits through ASU*

*Facilitator: Catherine Lee (District Twelve Educators' Association)*



## Mindfulness for Educators

This program is a holistic training for educators and members of the learning community. The sessions and materials help deliver yoga and mindfulness essentials to beginners and experienced practitioners. While participants are always welcome to delve deeper into any of the areas we cover, we aim to deliver a sampling of different styles of yoga and meditation so that students can experience some of the options available to them while creating a long relationship with yoga, meditation, self-care and mindfulness.

*Course dates: February 14 - March 26*

*Cost: \$135 (member) or \$235 (non-member) | Available for 3 graduate credits through ASU*

*Facilitator: Jan Pratt (Colorado Springs Education Association)*



## The Body Keeps the Score: Brain, Mind, Body in the Healing of Trauma

Teachers will explore what trauma is and looks like, how it might present in the population, and how trauma has the ability to reshape the body and brain, compromising the sufferer's capacities for pleasure, engagement, self-control and trust. The book then explores innovative treatment options that can help activate the brain's neuroplasticity.

*Course dates: February 14 - April 2*

*Cost: \$90 (member) or \$190 (non-member) | Available for 2 graduate credits through ASU*

*Facilitator: Jan Pratt (Colorado Springs Education Association)*



## Trauma-Proofing Your Kids

This book study focus's on how to help children cope with various types of trauma that they might have or may experience in their lives. The areas covered in this book study include trauma resilience, trauma mitigation through activities for falls, medical procedures and other trauma inducing situations, sexual trauma, trauma of divorce or separation of a family, grief recovery and community crisis intervention. This book offers practical tools to help children and families cope with and build resilience through life's traumas.

*Course dates: February 14 - April 9*

*Cost: \$90 (member) or \$190 (non-member) | Available for 2 graduate credits through ASU*

*Facilitator: Jan Pratt (Colorado Springs Education Association)*



## Using GoFormative to Act on Live Responses and Track Student Growth

Formative enables teachers to build their own assessments and assignments, or pull and customize "formatives" from the Library of thousands of pre-made materials (including Engage NY, Illustrative Math, Open Up Resources). Educators can act on live student responses to intervene and differentiate as needed; give feedback and auto-grade students' work; track student growth over time on specific content standards; visualize student performance across assignments/assessments; and easily integrate supportive tools, like Google Classroom, Flipgrid, Desmos, Padlet and other resources.

*Course dates: February 14 - March 20*

*Cost: \$90 (member) or \$190 (non-member) | Available for 2 graduate credits through ASU*

*Facilitator: Erin-Rose Schneider (East Grand Education Association)*



## Pedagogy of the Oppressed Book Study

Pedagogy of the Oppressed is a book study that will analyze Paulo Freire's ideas of transforming education from an oppressive institution to one that is more equitable. This book study is ideal for any educator who is working towards creating a more equitable and culturally competent work environment; additionally, it is ideal for any educator, whether it is an elementary school educator, a counselor, dean of students, or superintendent of a district. Participants can expect to collaborate, discuss, and create an action plan that considers the philosophies and examples discussed in Freire's book and in the course.

*Course dates: February 14 - March 20*

*Cost: \$45 (member) or \$145 (non-member) | Available for 1 graduate credit through ASU*

*Facilitator: Kathy Zaleski (District Twelve Educators' Association)*





## Grading Smarter, Not Harder: Assessment Strategies that Motivate Kids and Help Them Learn

This course is a book study of Myron Dueck's book *Grading Smarter Not Harder – Assessment Strategies That Motivate Kids and Help Them Learn*. "Decades of research point to indisputable evidence that grading penalties are far less effective than feedback and personalized learning." This underlying theme to the book drives the learner's understanding of grading and assessments in today's classroom. Participants will collaboratively discuss the themes of grading, homework, unit plans, retesting and creativity as they relate to assessments.

*Course dates: February 21 - April 3*

*Cost: \$45 (member) or \$145 (non-member) | Available for 1 graduate credit through ASU*

*Facilitator: Cheryl Mosier (Jefferson County Education Association)*



## Social Emotional Learning and The Brain: Strategies to Help Your Students Thrive

In this book study, learn how the brain structures and chemicals impact learning on an emotional level. Being aware of emotional impacts and learning how to regulate them leads the way to building positive relationships, solving problems and being a responsible decision maker. Chapters include Empathy, Self-Awareness, Social Awareness and Relationship Skills.

*Course dates: February 21 - April 3*

*Cost: \$45 (member) or \$145 (non-member) | Available for 1 graduate credit through ASU*

*Facilitator: Cheryl Mosier (Jefferson County Education Association)*



## The Arts and Social-Emotional Learning

This course is designed to push you creatively and help you make connections towards fully understanding and utilizing Social and Emotional Learning targets. Each Module will require you to create a work of art using various materials and explore how your artwork relates to SEL. By the end of the course, you will have a portfolio of work, and will be able to write your own SEL influenced lesson for ANY SUBJECT!! No Art Experience Required!! You only need a desire to create!

*Course dates: February 21 - April 1*

*Cost: \$135(member) or \$235(non-member) | Available for 3 graduate credits through ASU*

*Facilitator: Drew Mulligan (Jefferson County Education Association)*



## Gifted and Talented: A Primer for Student Success

In *Gifted and Talented: A Primer for Student Success*, educator learners will explore the characteristics, challenges, and best practices of engaging gifted and talented students in the classroom. By understanding the unique qualities of GT students, educators will be better equipped to handle the challenges faced by students, parents, and educators as they foster growth within the child, thereby inspiring the joy of continued learning.

*Course dates: February 21 - March 27*

*Cost: \$45 (member) or \$145 (non-member) | Available for 1 graduate credit through ASU*

*Facilitator: Anne Sutton (Windsor-Severance Education Association)*



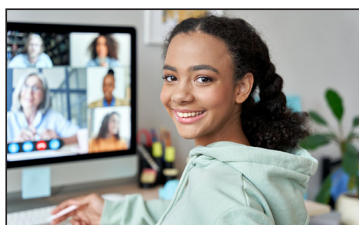
## Leaders for Just Schools

This course is based upon NEA's Leaders for Just Schools program. Teachers will actively participate in online and in-person learning to further develop their understanding of equity and its impact on learning environments. Teachers will ultimately examine ways to evaluate the equity of their own schools and create a plan to improve conditions of equity in their school.

*Course dates: February 27 - April 24*

*Cost: Free (member) or \$190 (non-member) | Available for 2 graduate credits through ASU*

*Facilitator: Ang Anderson and Rhiannon Wenning (Jefferson County Education Association)*



## Fostering Student Interaction in Online Learning

In this course, teachers will examine how to effectively plan, design, and leverage a range of strategies and techniques to improve and increase student interactions online. You'll explore the different types of barriers to engagement (social, motivational, and cultural) and develop a plan to overcome these varies using online learning tools. You will learn how to design lessons that incorporate interactive, engaging online discussions and activities that will improve students' motivation and engagement in your class.

*Course dates: February 27 - April 3*

*Cost: \$90 (member) or \$190 (non-member) | Available for 2 graduate credits through ASU*

*Facilitator: Caroline Davis (District Twelve Educators' Association)*



## How to Be an Antiracist

*How to Be an Antiracist* by Dr. Ibram Kendi explores different forms of racism, their consequences and gives us the knowledge and steps needed to be antiracist. This book study will equip educators with the knowledge they need to educate others around antiracist ideas and actions in their classrooms, their schools, and their everyday lives.

*Course dates: February 27 - April 11*

*Cost: \$45 (member) or \$145 (non-member) | Available for 1 graduate credit through ASU*

*Facilitator: April Leitchshuh (District Twelve Educators' Association)*



## Overcoming Dyslexia

Participants will gain knowledge that provides the foundation for the latest science-based diagnosis of dyslexia and effective interventions for reading difficulties. The course will go in depth how skilled reading develops and when to expect the successive milestones. Participants will also learn how to recognize the specific clues that should alert them that reading is not progressing smoothly. This course will provide both educators who work with struggling readers of all ages with practical resources on helping them become better readers.

*Course dates: February 28 - April 24*

*Cost: \$90 (member) or \$190 (non-member) | Available for 2 graduate credits through ASU*

*Facilitator: Larisa Baskin (Aurora Education Association)*



## Thriving Educators: Daily Activities to Cultivate Your Emotional Resilience

Do you want to get through your next school year a bit more smoothly, with confidence, self awareness and emotional resilience? You can learn strategies that will help you get a fresh start before you go back to the classroom! Join me in working through multiple activities from Elena Aguilar's *Onward* workbook. Let's gather some tools to take care of ourselves as well as our students! This book study will focus on the 2nd half of *The Onward Workbook*. You do not need to take the *Survival* section first as there is no required order.

*Course dates: February 28 - March 27*

*Cost: \$45 (member) or \$145 (non-member) | Available for 1 graduate credit through ASU*

*Facilitator: Kim McLachlan (District Twelve Educators' Association)*



## Cluster Planning: An Easy and Effective Tool for Lesson Planning

Cluster/Batch lesson planning is an efficient process where you plan several weeks or months of instruction at one time. In this course, educators will be guided through the process of planning a unit, month, quarter, or the like in full. This includes standards, curriculum mapping, and a day by day breakdown with activities. This course has the potential to help teachers have freedom from work outside of school hours.

*Course dates: February 28 - March 27; April 4 - May 1*

*Cost: \$45 (member) or \$145 (non-member) | Available for 1 graduate credit through ASU*

*Facilitator: Kelley Walker (Colorado Education Association)*



## Daily STEM

In this book study teachers will learn how to create STEM culture in their classroom and communities. Teachers will explore what a sustainable STEM culture looks like and be challenged to think beyond 3D printers and expensive robots. What does it look like to make STEM relevant to every kid and infuse it into every classroom? This course will help teachers to locate STEM connections in the everyday.

*Course dates: February 28 - April 11*

*Cost: \$45 (member) or \$145 (non-member) | Available for 1 graduate credit through ASU  
Facilitator: Sarah Pomeroy (Summit County Education Association)*



## Developing Differentiated Small Group Math Instruction

Teachers will actively participate in online learning to investigate and gain best practices for differentiated small group math instruction. Teachers will collaborate with one another to share, learn, apply, and reflect on differentiated techniques that are used in their classroom, along with ideas to support ELL students.

*Course dates: February 28 - March 27*

*Cost: \$45 (member) or \$145 (non-member) | Available for 1 graduate credit through ASU  
Facilitator: Leigh Ann Eucker (Poudre Education Association)*

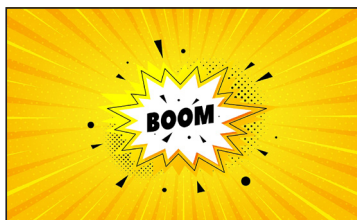


## Comprehension Connections: Bridges to Strategic Reading

Teachers will gain engaging and concrete ways to teach abstract reading strategies. The book emphasizes the importance of how to make thinking visible for our students, and how to teach these strategies before students apply them to their independent reading. The book is organized into chapters based on these strategies - schema, inferring, questioning, determining importance, visualizing, and synthesizing. Each strategy has a "launching lesson" that includes a concrete item that is used as an anchor throughout the teaching of the strategy. Teachers can easily implement these lessons right away! During the course, we will also connect these strategies to supporting ELLs.

*Course dates: February 28 - March 27*

*Cost: \$45 (member) or \$145 (non-member) | Available for 1 graduate credit through ASU  
Facilitator: Leigh Ann Eucker (Poudre Education Association)*



## Boom Cards for Engagement and Differentiation

This course will provide participants with an opportunity to explore fun ways to engage students while differentiating content using Boom Cards. Boom cards are interactive online games and activities designed for targeted practice and mastery of skill. Boom Cards provide short, fun activities for students and allow teachers to progress monitor and collect data seamlessly. The course will include articles and videos to help educators learn about the power of Boom Cards as an education tool, utilize a free Boom account or expand their practice to build their own Boom Cards based on their specific student needs.

*Course dates: March 7 - April 3*

*Cost: \$45 (member) or \$145 (non-member) | Available for 1 graduate credit through ASU  
Facilitator: Mary Robinson (District Twelve Educators' Association)*



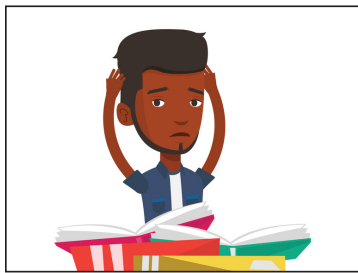
## Hacking School Discipline: 9 Ways to Create a Culture of Empathy and Responsibility based on Restorative Justice

In this book study, educators will learn 9 ways to create a culture of empathy and responsibility using restorative justice and other techniques. They will learn how to not only change behaviors by replacing traditional school discipline practices that do not work, but transform students into productive citizens, accountable for their own actions.

*Course dates: March 7 - April 3*

*Cost: \$45 (member) or \$145 (non-member) | Available for 1 graduate credit through ASU  
Facilitator: Stephanie Fast (Littleton Education Association)*





## Teaching What Really Happened

Teaching What Really Happened is a book study that takes a critical look at Social Studies textbooks and “their lack of awareness of today’s multicultural student audience.” This book study is ideal for the educator who is working towards creating a more culturally competent and inclusive curriculum in their Social Studies courses. Loewen’s book has an emphasis on events in American history, though the ideas he provides for how to teach can apply to any discipline in the Social Studies. Loewen’s book encourages educators to decolonize their understanding of history and teaching. In this book study, participants can expect to collaborate, discuss, and create materials for their courses.

*Course dates: March 7 - April 10*

*Cost: \$45 (member) or \$145 (non-member) | Available for 1 graduate credit through ASU*

*Facilitator: Kathy Zaleski (District Twelve Educators’ Association)*



## Building Relationships with Students

As we have learned during the Pandemic, building relationships with students is a key piece of what we do as educators. Without relationships, we will be unable to accomplish anything else with students. In this course, we take a look at what, why, and how to build relationships with our students. This is appropriate for all educators at all levels including but not limited to teachers, counselors, administrators, and licensed staff. This is a self paced course and all materials are included.

*Course dates: March 14 - April 11*

*Cost: \$90 (member) or \$190 (non-member) | Available for 2 graduate credits through ASU*

*Facilitator: Elizabeth Sedalnick (District Twelve Educators’ Association)*



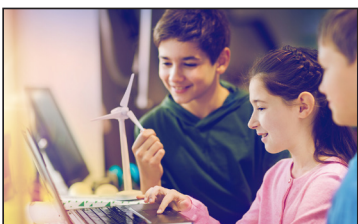
## Yoga in the Classroom

Participants will explore ways to bring yoga into the classroom to help students learn to combine breath and movement in a school setting. Yoga provides a great opportunity to learn brain breaks that are movement based while also incorporating balance, breath, coordination and self awareness.

*Course dates: March 14 - April 30*

*Cost: \$135 (member) or \$235 (non-member) | Available for 3 graduate credits through ASU*

*Facilitator: Jan Pratt (Colorado Springs Education Association)*



## Personalizing Learning to Keep Students at the Center

In this *Students at the Center* book study, educator learners will be introduced to the basic tenets of personalized learning and how it can positively impact student success. Through the course text, educators will also engage with skills essential to student growth and development through the 16 Habits of Mind first created by Arthur L. Costa and Bena Kallick.

*Course dates: March 14 - April 17*

*Cost: \$45 (member) or \$145 (non-member) | Available for 1 graduate credit through ASU*

*Facilitator: Anne Sutton (Windsor-Severance Education Association)*



## Connecting Through Poems and Podcasts

Poetry is often said to be the bridge between language and the human experience. In this course, learners will listen to and read poems and poetic analysis and share their reactions via discussions and journal entries. Learners will be exposed to podcasts and videos that illustrate how poems and podcasts can be used to engage students, challenge thinking, propel meaningful conversations, and build relationships.

*Course dates: March 14 - April 17*

*Cost: \$45 (member) or \$145 (non-member) | Available for 1 graduate credit through ASU*

*Facilitator: Lisa Wennerth (Windsor-Severance Education Association)*

**All class dates are subject to change based on facilitator availability. All classes are subject to cancellation if fewer than five students enroll by the official class start date.**



## Happy Teachers Change the World: A Guide for Cultivating Mindfulness in Education

Do you feel like this was one of the most difficult years of your career? Are you feeling burnt out, frustrated, and overall burnt out? If you answered “yes” to any of these questions, this course is for you. Using the book “Happy Teachers Change the World,” we will learn how to cultivate mindfulness to reignite that spark for teaching that you had when you first began your career. This course is the perfect fit for any teacher, child, or individual wanting to become more in touch with themselves and their connection to the world.

*Course dates: March 21 - May 8*

*Cost: \$90 (member) or \$190 (non-member) | Available for 2 graduate credits through ASU*

*Facilitator: Lindsay Rider (Brighton Education Association)*



## Advanced Google Tools: Harnessing the Power of Google Level II Certification

This course is designed to build and expand upon the learning offered in the Google Level I course. There are 11 modules for the learner to engage in at their own pace. Once the modules are complete, you will be able to prove your knowledge of the Google platform and join the ranks of Google Level II Educators around the world. The Level 2 Educator badge can be added to your resume, website, school credential, or other professional network. Through this model, educators will engage in a collaborative learning environment with other colleagues examining how using technology in the classroom and for a collaborative work environment can contribute to student achievement. Participants will depart from old systems of thinking to expand upon the foundational structures of the Google for Education framework and consider even further options of a blended learning model. This course is offered to anyone who has already taken the Google Level I training or certification or anyone interested in honing their skills in this additional offering of the Google Suite workshop.

*Course dates: March 21 - May 1*

*Cost: \$90 (member) or \$190 (non-member) | Available for 2 graduate credits through ASU*

*Facilitator: Robert Thompson (Colorado Education Association)*



## Distinguishing Language Acquisition from Learning Disabilities

This book study will provide participants with an opportunity to explore the differences between language acquisition and learning disability in English Language Learners who are struggling to read. The book will help educators make more informed choices around strategies and services to best support English Language Learners. The updated edition includes expanded information on appropriate Multi-Tier System of Support (MTSS), nine common misconceptions that can lead to students being misidentified as special education students, evidence based practices for more successful teaching for students acquiring English and appropriate techniques for assessing English Language Learners for special education. Participants will analyze their schools current teaching practices, MTSS procedures and brainstorm improvements to these systems.

*Course dates: April 4 - May 8*

*Cost: \$45 (member) or \$145 (non-member) | Available for 1 graduate credit through ASU*

*Facilitator: Mary Robinson (District Twelve Educators' Association)*

**All class dates are subject to change based on facilitator availability. All classes are subject to cancellation if fewer than five students enroll by the official class start date.**

## Follow and like COpilot on social media!



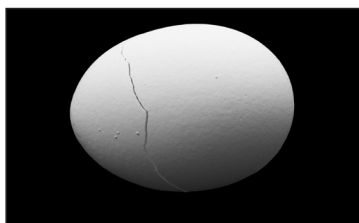
CEA COpilot



@cea\_copilot



#cea\_copilot



## **White Fragility: Why It's So Hard for People to Talk about Racism**

This book study analyzes the system of white supremacy and why it is challenging for white people to discuss racism. As the student population becomes increasingly diverse, "it is essential educators develop skills to understand and examine bias, racism, and race, especially their own." Robin DiAngelo's book examines how white fragility has developed, how it furthers the racial caste system, and how to make repairs and move towards systematic change. This course is ideal for the educator wanting to learn how to become more anti-racist, to challenge systems of white supremacy, and to consider what this work looks like within education.

*Course dates: April 4 - May 8*

*Cost: \$45 (member) or \$145 (non-member) | Available for 1 graduate credit through ASU*

*Facilitator: Kathy Zaleski (District Twelve Educators' Association)*



## **Culturize: Every Student. Every Day. Whatever it Takes.**

This course is a book study of Jimmy Casas's latest work *Culturize*. Participants will collaboratively discuss the four core principles Casas introduces and reflect on their own teaching in order to develop an increased positive culture within their school. Included in this book study will be practical application of how to use the concepts that the book introduces.

*Course dates: April 4 - May 1*

*Cost: \$45 (member) or \$145 (non-member) | Available for 1 graduate credit through ASU*

*Facilitator: Stephanie Fast (Littleton Education Association)*



## **Visible Learning for Literacy**

Almost everything teachers do when working with students improves student achievement. But only a few things work when it comes time for students to demonstrate a year's worth of growth in literacy. This book study will explore how to match instructional approaches with specific phases of learning, understand how impactful your teaching is and what to do when your impact is not sufficient.

*Course dates: April 4 - May 8*

*Cost: \$45 (member) or \$145 (non-member) | Available for 1 graduate credit through ASU*

*Facilitator: Larisa Baskin (Aurora Education Association)*



Colorado Professional Institute for Learning Online Together

# [www.ceacopilot.org](http://www.ceacopilot.org)