

# COpilot

Colorado Professional Institute for Learning Online Together

COLORADO  
EDUCATION  
ASSOCIATION  
est. 1875



# [www.ceacopilot.org](http://www.ceacopilot.org)

## Fall 2022 Courses

*Enrollment opens  
July 23!*

# A bit about COpilot

Colorado teachers and education support professionals are deeply committed to every student's success. We want all students to achieve their full potential as individuals and become productive citizens who make positive contributions to society.

We believe that educators provide the stable, nurturing, inspiring environment that makes it possible to teach each student and provide individual attention to each student's learning needs. To this end, we work to ensure that every student has a qualified, caring educator.

We believe that we must change the way educators are recruited, trained, evaluated, supported, and held accountable. We believe we must raise the bar for what it means to be a quality educator by focusing on preparing new educators for the classroom, attracting and retaining educators, providing continuous, high quality professional development for all educators, and promoting effective teachers and quality educators.

We believe that COpilot is one key to achieving these core areas of professional excellence. Through expanding your learning opportunities, you will ensure that all students in Colorado public schools have the benefit of qualified, caring, committed educators throughout their school years.

***For more information or if you have questions, please contact us at [ceacopilot@coloradoea.org](mailto:ceacopilot@coloradoea.org)!***

---

## Frequently Asked Questions (FAQs):

### ***How do I sign up for a COpilot account?***

To create a COpilot account, visit [www.ceacopilot.org](http://www.ceacopilot.org), click Log In and either verify your Association membership or create a guest account. This easy process doesn't take more than 30 seconds!

### ***How much time does a class take?***

Most COpilot classes are 15 instructional hours spread over five or six weeks. Students should expect to spend about three hours per week doing class activities.

### ***Can I earn credit, clock hours, and a certificate?***

The answer is a resounding "Yes!" Nearly all of the classes on COpilot qualify for graduate credit from Adams State University. All of the classes are eligible for license renewal hours through the Colorado Department of Education. At the conclusion of each class, you will receive a certificate of completion for your records.

### ***Can I get the syllabus for the class before making a decision?***

Absolutely! Just email the Director of Learning Services, Casey Kilpatrick ([ckilpatrick@coloradoea.org](mailto:ckilpatrick@coloradoea.org)), for that information.

### ***Can my district use COpilot for its professional development?***

CEA has worked hard to make sure districts in partnership with the local association can use COpilot to run all of their professional development. We do not charge districts to use the platform. Instead, our requirement is that the district and local association reach an agreement that dictates the school district will pay members who facilitate the classes a fair stipend. For more information about this kind of opportunity, please contact Casey Kilpatrick at CEA ([ckilpatrick@coloradoea.org](mailto:ckilpatrick@coloradoea.org)).

### ***How are classes structured?***

All of our classes are fully facilitated, which means you'll have a trained CEA member leading you and teachers from across Colorado through the content. Our classes are time-bound so that the facilitation makes sense. Through using this mostly synchronous method, teachers can more easily collaborate with each other, share experiences, and receive coaching as they practice strategies in their classrooms.

# Fall 2022 Class List



## Teaching for Global Competency

How do we prepare our students to work in the global economy? How do we teach them to tackle global problems like climate change and equity? This course will equip you with the four key components of Global Education and how they can be implemented in any classroom. Teachers will learn specific strategies to support each of the key components (investigating the world, communicate ideas, take perspectives, take action) and revise existing lessons plans to bring the globe to your students.

*Course dates: August 8 - September 19*

*Cost: \$45 (member) or \$145 (non-member) | Available for 1 graduate credit through ASU*

*Facilitator: Jess Noffsinger (District Twelve Educators' Association)*



English  
Learner  
PD Course

## Integrating STEM and Literacy Using "Novel Engineering"

Educators will actively participate in online learning to further develop their understanding of integrating STEM in literacy using Novel Engineering. During a book study, participants will develop familiarity with the process and then construct their own learning progression to develop a novel engineering project for their classroom. This class is appropriate for teachers K-12 who teach literacy, science, and/or social studies.

*Course dates: August 8 - September 19*

*Cost: \$90 (member) or \$190 (non-member) | Available for 2 graduate credits through ASU*

*Facilitator: Jess Noffsinger (District Twelve Educators' Association)*



English  
Learner  
PD Course

## Culturally and Linguistically Diverse History Makers

This class is geared for elementary teachers who want to celebrate the contributions of five culturally diverse individuals in American history. Educators will actively participate in building skills centered around the contributions of Mario Molina, Pura Belpre, Gyo Fujikawa, Teresa Carreno, and Jim Thorpe. Throughout this course, educators will see how to build a strong cross-curricular set of lessons geared to interests/needs of their own ELL students while supporting their students in language development, mapping skills, and critical thinking.

*Course dates: August 8 - September 10*

*Cost: \$90 (member) or \$190 (non-member) | Available for 2 graduate credits through ASU*

*Facilitator: Christy Howard (Colorado Springs Education Association)*



English  
Learner  
PD Course

## Comprehension Strategies Using Peardeck

Educators will actively participate in online learning to further develop their understanding of various comprehension strategies to engage specialized populations within the classroom. The application of Peardeck will incorporate comprehension strategies related to the educator's specific content area to create an engaging and interactive learning environment. Educators will learn how to utilize specific tools within Peardeck to reach students who are ELL, LD, etc.

*Course dates: August 8 - September 4; October 2 - October 30*

*Cost: \$90 (member) or \$190 (non-member) | Available for 2 graduate credits through ASU*

*Facilitator: Caroline Davis (District Twelve Educators' Association)*



## Creating Interactive Virtual Field Trips

In this course, teachers will examine how to effectively plan, design, and create a virtual field trip using ThingLink. You'll explore the different ways to create interactive, engaging content that students can easily navigate and learn from. By the end of this course, you will have a variety of usable ThingLinks including an interactive virtual field trip that you could use in the remote, hybrid, or flipped classroom setting.

*Course dates: August 8 - September 4; October 2 - October 30*

*Cost: \$90 (member) or \$190 (non-member) | Available for 2 graduate credits through ASU*

*Facilitator: Caroline Davis (District Twelve Educators' Association)*



## A Permanent Pivot to (Re)design Your Lessons

This course incorporates Dr. Scott McLeod's 4 Shift Protocol and is designed to introduce teachers to practical skills to (re)design lessons focusing on deeper learning, greater student agency, more authentic work, and rich technology infusion. Teachers will learn to recognize the four shifts, evaluate ways to personalize the four shifts, (re)design a lesson, and use the four shifts to permanently pivot to incorporating the shifts into future.

*Course dates: August 8 - October 28; September 26 - December 4*

*Cost: \$45 (member) or \$145 (non-member) | Available for 1 graduate credit through ASU*  
*Facilitator: Robbi Makely (Brighton Education Association)*



## The Playful Classroom: The Power of Play for All Ages

In this class, participants will learn about play in the classroom! You will study the research behind play and how it affects the brain, social skills, increase in productivity and self esteem, decrease in student behaviors and so much more. You will apply lessons from the text and our online activities in your own classrooms as a lab where you get to try all sort of new play-based strategies with students.

*Course dates: August 8 - October 2; September 12 - November 6*

*Cost: \$90 (member) or \$190 (non-member) | Available for 2 graduate credits through ASU*  
*Facilitator: Barb Pedrett (Cherry Creek Education Association)*



## Mental Health for Our Students: The Top 5 Struggles Our Students Face Today

Students today are facing such a different set of struggles than we did when we were in school. This course focuses and introduces the five major topics that kids deal with today including (but not limited to) bullying, mental health, suicide, stress, and inequity. In this class we will work to understand and find a set of tools to help our students navigate through this new age with support from us. No books needed, all materials are included.

*Course dates: August 8 - September 11; October 10 - November 13*

*Cost: \$90 (member) or \$190 (non-member) | Available for 2 graduate credits through ASU*  
*Facilitator: Elizabeth Sedalnick (District Twelve Educators' Association)*



## How to Address Bullying - A Proactive Approach

Preventing bullying and creating a safe environment for our students is a top priority at all levels. This course will define bullying and the different types, explore creating a safe environment, work on assessing bullying, and help us to help students to stop bullying whether they or someone they know are experiencing bullying.

*Course dates: August 8 - September 4*

*Cost: \$90 (member) or \$190 (non-member) | Available for 2 graduate credits through ASU*  
*Facilitator: Elizabeth Sedalnick (District Twelve Educators' Association)*



## Number Sense Routines

Deep understanding of number sense is the foundation for developing math skills in young learners. The daily use of 5 to 15 minute exercises will help students build number sense. Participants in this book study will learn how easily number sense can be developed and about ways how to implement responsive number sense routines no matter what curriculum materials teachers use.

*Course dates: August 8 - September 4; October 31 - November 27*

*Cost: \$45 (member) or \$145 (non-member) | Available for 1 graduate credit through ASU*  
*Facilitator: Larisa Baskin (Aurora Education Association)*

**All class dates are subject to change based on facilitator availability. All classes are subject to cancellation if fewer than five students enroll by the official class start date.**





### English Learner PD Course

## Creating Educational Videos to Enhance Student Learning Inside and Outside of the Classroom

This class will help you to create videos that you can post to your websites. The videos will allow you to have a flipped classroom, a blended learning classroom, or merely have videos on your website for those students who are absent. It can be as if there are multiple educators in one classroom if used during class. Students can learn at their own pace because they can watch the video as many times as they need to. It allows the educator to be free to work in small groups or one on one with students while the rest of the class can move ahead.

*Course dates: May 9 - June 5; June 6 - July 3; October 3 - October 30*

*Cost: \$90 (member) or \$190 (non-member) | Available for 2 graduate credits through ASU*

*Facilitator: Catherine Lee (District Twelve Educators' Association)*



## Anger Management for Educators

Anger is a normal emotion that everyone feels from time to time. This class, with the aid of *The Cognitive Behavioral Workbook for Anger: A Step-By-Step Program for Success*, will help you to use a variety of tools, exercises, and self-mastery methods to overcome destructive anger. You will be able to recognize and overcome anger triggers, extinguish anger in the heat of the moment, stop the cycle of blame, tolerate negative emotions, deal with difficult people, and repair broken relationships.

*Course dates: August 8 - September 18; October 3 - November 13*

*Cost: \$135 (member) or \$235 (non-member) | Available for 3 graduate credits from ASU*

*Facilitator: Catherine Lee (District Twelve Educators' Association)*



## Personal Financial Literacy for Colorado Educators: Making the Most of Your PERA Pension, Employer Benefits, and Investments

Being an educator is a very difficult job. It's even more difficult if you're worried about your personal financial situation. Many educators are confused and/or intimidated by finances, and "don't know what they don't know". This stress can't help but impact their job performance. So this class is designed to not only make a difference in your personal lives, but if it can help you relieve that stress, it will make you even better educators and do an even better job of meeting the needs of our students in these challenging times. This class will also help prepare you to better teach the Colorado Academic Standards for K-12 Personal Financial Literacy (PFL). It is also likely that you will learn something that will more than cover the cost of this course!

*Course dates: August 12 - October 2; October 14 - December 4*

*Cost: \$90 (member) or \$190 (non-member) | Available for 3 graduate credits through ASU*

*Facilitator: Karl Fisch (Colorado Education Association - Retired)*



## Culturize: Every Student. Every Day. Whatever it Takes.

This course is a book study of Jimmy Casas's latest work *Culturize*. Participants will collaboratively discuss the four core principles Casas introduces and reflect on their own teaching in order to develop an increased positive culture within their school. Included in this book study will be practical application of how to use the concepts that the book introduces.

*Course dates: August 15 - November 11*

*Cost: \$45 (member) or \$145 (non-member) | Available for 1 graduate credit through ASU*

*Facilitator: Stephanie Fast (Littleton Education Association)*

**All class dates are subject to change based on facilitator availability. All classes are subject to cancellation if fewer than five students enroll by the official class start date.**

## Follow and like COpilot on social media!



CEA COpilot



@cea\_copilot



#cea\_copilot



English  
Learner  
PD Course

## The ELL Teacher's Toolbox

This practical, valuable resource provides hundreds of innovative and research-based instructional strategies that you can use to support all levels of English Language Learners in your classroom. We will use the text as a guide to explore new ways to support our ELL students, dive deeply into each of the 4 language domains: Reading, Writing, Speaking, and Listening, and discover new ways to provide important intervention for students in each of these domains. This resource will become one of your most used items in your professional library.

*Course dates: May 9 - June 20*

*Cost: \$45 (member) or \$145 (non-member) | Available for 1 graduate credit through ASU*

*Facilitator: Lindsay Rider (Brighton Education Association)*



English  
Learner  
PD Course

## Teaching English Language Learners Across Content Areas

Have you ever wondered if all of your students are truly "getting it?" Do you want to enhance your lessons to engage all learners while at the same time enhancing instruction for your English Language Learners? In this class, teachers will engage in readings by Judie Haynes and Debbie Zacarian in order to learn to enhance their classroom and school environment and improve student academic language and literacy learning in language arts, math, science, and social studies, so that they can ensure all students are getting what they need to be successful in the classroom.

*Course dates: June 20 - July 25*

*Cost: \$45 (member) or \$145 (non-member) | Available for 1 graduate credit through ASU*

*Facilitator: Lindsay Rider (Brighton Education Association)*



English  
Learner  
PD Course

## Purposeful Play: A Teacher's Guide to Igniting Deep and Joyful Learning Across the Day

Educators will participate in an online book study to further develop their understanding of the importance of play in their classrooms. The authors assert, "Play is one type of environment where children can be rigorous in their learning." Throughout this course, K-5 teachers will learn how to incorporate play and learning into their classrooms. At the end of this course, teachers will understand and be able to incorporate play as its own method of instruction and align it with standards.

*Course dates: August 15 - September 11; September 19 - October 16*

*Cost: \$45 (member) or \$145 (non-member) | Available for 1 graduate credit through ASU*

*Facilitator: Barb Pedrett (Cherry Creek Education Association)*



English  
Learner  
PD Course

## Leaders for Just Schools Level 2

This course is based upon NEA's Leaders for Just Schools program. Teachers will actively participate in online and in-person learning to further develop their understanding of equity and its impact on learning environments. Teachers will ultimately examine ways to evaluate the equity of their own schools and create a plan to improve conditions of equity in their school.

*Course dates: August 15 - October 3*

*Cost: Free (member) or \$190 (non-member) | Available for 2 graduate credits through ASU*

*Facilitator: Ang Anderson and Rhiannon Wenning (Jefferson County Education Association)*



English  
Learner  
PD Course

## Why Play Works: Big Changes Start Small

Teachers will actively participate in online learning to further develop their understanding of choice time in the classroom grades K-8. Specific applications will be made to practice, as teachers will read and discuss reading assignments and use their classroom as their "lab". Teachers will apply new play strategies and centers into their classrooms and discuss their findings through online discussions and end of unit slideshow.

*Course dates: August 22 - September 18; September 26 - October 30*

*Cost: \$45 (member) or \$145 (non-member) | Available for 1 graduate credit through ASU*

*Facilitator: Barb Pedrett (Cherry Creek Education Association)*



## Never Work Harder Than Your Students and Other Principles of Great Teaching

This course is a book study of Robyn Jackson's book *Never Work Harder Than Your Students and Other Principles of Great Teaching*. "The master teacher mindset is really a disposition toward teaching. It is a way of thinking about instruction, about students, about learning, and about teaching in general that makes teaching fluid, efficient, and effective." Six principles of mastery teaching will be discussed and applied during this book study.

*Course dates: August 22 - October 2*

*Cost: \$90 (member) or \$190 (non-member) | Available for 2 graduate credits through ASU*

*Facilitator: Cheryl Mosier (Jefferson County Retired Educators' Association)*



## The School Garden, Nature's Classroom

Having a school garden provides children the opportunity to learn new skills, enjoy the outdoors, and benefit from local, healthy foods. School gardens are an excellent way to engage children outside the classroom whilst teaching them teamwork, responsibility, creativity, and nutrition. When starting a school garden there are many factors to consider, and getting started can feel daunting. This course is for school personnel that are interested in starting a school garden as well as school personnel that have existing school gardens. We will dig into the various factors that promote a healthy sustainable garden including community and school involvement, funding, specific plants that grow well in a school garden, and more. At the end of the course students will be prepared to develop a school garden and/or refine an existing school garden.

*Course dates: August 22 - September 19*

*Cost: \$90 (member) or \$190 (non-member) | Available for 2 graduate credits through ASU*

*Facilitator: Kase Pooley (Denver Classroom Teachers' Association)*



## Culturally Responsive Teaching and the Brain

In this book study, students will learn that the achievement gap remains a stubborn problem for educators of culturally and linguistically diverse students. Culturally responsive pedagogy has shown great promise in meeting this need, but many educators still struggle with its implementation. In this book, Zaretta Hammond draws on cutting-edge neuroscience research to offer an innovative approach for designing and implementing brain-compatible culturally responsive instruction.

*Course dates: August 22 - September 25; October 3 - November 6*

*Cost: \$45 (member) or \$145 (non-member) | Available for 1 graduate credit through ASU*

*Facilitators: Skyler Zody (Aurora Education Association)*



## Rising Strong: How the Ability to Reset Transforms the Way We Live, Love, Parent, and Lead

As educators we are constantly interacting with other people and are in situations that may not always go the way we expected. It is how we react to these people and the situations that make our path either clear or muddy. In this book study we will study how to use Brene Brown's "Rising Strong Process" in our daily lives which includes: The Reckoning: walking into our story, The Rumble: owning our story, and The Revolution: writing a new ending and changing how we engage with the world.

*Course dates: August 22 - September 25*

*Cost: \$45 (member) or \$145 (non-member) | Available for 1 graduate credit through ASU*

*Facilitator: Kim McLachlan (District Twelve Educators' Association)*

**All class dates are subject to change based on facilitator availability. All classes are subject to cancellation if fewer than five students enroll by the official class start date.**





## Resilient Educators: What You Can Learn About Yourself in Order to Survive the School Year

Do you want to get through your next school year a bit more smoothly, with confidence, self awareness and emotional resilience? You can learn strategies that will help you get a fresh start before you go back to the classroom! Join me in working through multiple activities from Elena Aguilar's *Onward* workbook. Let's gather some tools to take care of ourselves as well as our students!

*Course dates: August 22 - September 25*

*Cost: \$45 (member) or \$145 (non-member) | Available for 1 graduate credit through ASU*

*Facilitator: Kim McLachlan (District Twelve Educators' Association)*



English  
Learner  
PD Course

## Advanced Edpuzzle Skills

Teachers will actively participate in online learning to further deepen their understanding of Edpuzzle. You will learn how to leverage your current Edpuzzle skills with engaging, choice driven lessons. You will also learn how to organize your content better and connect your Edpuzzle with your current LMS. If you are familiar with Edpuzzle and are looking to get to the next level of skillset, this is the course for you. You will learn how to use Edpuzzle to leverage engaging, multidimensional instruction and choice. This course is an ideal followup to the course "Literacy Strategies for the Diverse Classroom Using Edpuzzle". If you are looking for a beginner course, I recommend you take that course first, then this course.

*Course dates: August 28 - October 2; October 30 - November 27*

*Cost: \$90 (member) or \$190 (non-member) | Available for 2 graduate credits through ASU*

*Facilitator: Caroline Davis (District Twelve Educators' Association)*



English  
Learner  
PD Course

## Literacy Strategies for the Diverse Classroom Using Edpuzzle

Teachers will actively participate in online learning to further develop their understanding of various literacy strategies to engage specialized populations within the classroom. The application of Edpuzzle will incorporate educational videos related to the teacher's specific content area to create an engaging and interactive learning environment. Teachers will learn how to utilize specific tools within Edpuzzle to reach students who are DHH, ELL, LD, etc.

*Course dates: August 28 - October 2; October 30 - November 27*

*Cost: \$90 (member) or \$190 (non-member) | Available for 2 graduate credits through ASU*

*Facilitator: Caroline Davis (District Twelve Educators' Association)*



English  
Learner  
PD Course

## Standards-Based Grading & Teacher Clarity

In this course, teachers will actively participate in online learning to further develop their understanding of Standards-based grading and John Hattie's *Visible Learning: Theory on Teacher Clarity*. Specific applications will be made to practice, as teachers will identify essential learnings from their academic standards, deconstruct the standards to create a Standards-based proficiency scale (rubric), and create an assessment task. This course is encouraged to be taken with teams, but it is not required.

*Course dates: August 29 - October 9*

*Cost: \$90 (member) or \$190 (non-member) | Available for 2 graduate credits through ASU*

*Facilitator: Brittany Osborn (Poudre Education Association)*



## Branching Google Forms for Formative Assessment

In this course, teachers will actively participate in online learning to further develop their understanding of Google Forms, assessment, feedback, and analyzing data. Specific applications will be made to practice, as teachers will create a template to help meet the needs of their students.

*Course dates: August 29 - September 25; October 10 - November 6*

*Cost: \$45 (member) or \$145 (non-member) | Available for 1 graduate credit through ASU*

*Facilitator: Brittany Osborn (Poudre Education Association)*



## Using Games to Teach K-12

Are you looking to build positive classroom culture while increasing student engagement and retention? In this course, you will learn how through the implementation of classroom games. We will learn unique team-building games, review games, games that teach content, board games and video games. Ready-to-use resources and templates will be shared with you so that you can get started immediately!

*Course dates: August 29 - October 2*

*Cost: \$45 (member) or \$145 (non-member) | Available for 1 graduate credit through ASU  
Facilitator: Dwight Pickering (Colorado Springs Education Association)*

## Uncovering the Logic of English

In this book, participant will discover the LOGIC of English. Have you found yourself asking why English words are spelled the way they are? Why is there a silent e in have? Are you looking for ways to improve your phonic instruction? Would you like a new approach to teaching "sight words?" This book will take participants on a discovery of English and how it really is a logical language. Participants will discuss their learning in discussion boards, reflect on the material, apply learning in assignments, and get feedback from the facilitator.

*Course dates: August 29 - October 9; October 17 - November 27*

*Cost: \$45 (member) or \$145 (non-member) | Available for 1 graduate credit through ASU  
Facilitator: Jeremiah Moore (Platte Valley Education Association)*

## Introduction to Restorative Practices in Education

This course is an opportunity for educators to become skilled restorative practitioners in their work settings with students and colleagues. During sessions, participants will learn the philosophy of RP, become immersed in the practices, and create restorative tools for their own work environment that can be implemented immediately no matter the school's current discipline model.

*Course dates: August 29 - November 6*

*Cost: \$90 (member) or \$190 (non-member) | Available for 2 graduate credits through ASU  
Facilitator: Kathy Zaleski (District Twelve Educators' Association)*

## The Arts and Social-Emotional Learning

This course is designed to push you creatively and help you make connections towards fully understanding and utilizing Social and Emotional Learning targets. Each Module will require you to create a work of art using various materials and explore how your artwork relates to SEL. By the end of the course, you will have a portfolio of work, and will be able to write your own SEL influenced lesson for ANY SUBJECT!! No Art Experience Required!! You only need a desire to create!

*Course dates: September 5 - October 16; October 10 - November 20*

*Cost: \$135(member) or \$235(non-member) | Available for 3 graduate credits through ASU  
Facilitator: Drew Mulligan (Jefferson County Education Association)*

## Teacher Wellbeing and Self-Care

With teacher burnout at an all time high, what are you doing to take care of yourself so that you can be your best for you, your family, friends, and students? In this course we are going to dive deep into how to take care of ourselves, find meaning in teaching, and feeling like our efforts are worth it. The book, *A Little Guide for Teachers: Teacher Wellbeing and Self-care*, will help guide our thinking and learning. We will explore topics such as keeping your values and moral purpose at the forefront of your professional role, maintaining a sense of perspective, and managing your workload effectively and efficiently. We will also learn about handling stress, fostering peer relationships, and promoting agency within your role.

*Course dates: September 5 - October 16; October 10 - November 6*

*Cost: \$45 (member) or \$145 (non-member) | Available for 1 graduate credit through ASU  
Facilitator: Kyleene Pedrett (Cherry Creek Education Association)*

English  
Learner  
PD Course

English  
Learner  
PD Course



## A Little Guide for Teachers: Supporting Behavior in the Classroom

The book, *A Little Guide for Teachers: Supporting Behavior in the Classroom*, will help guide our thinking and learning. We will explore topics such as different definitions of behavior, flexibility, structure, and managing the mood of the classroom. Throughout this course we will reflect on our own teaching, challenge ideas, and learn new tips and tricks to help support behavior within your role.

*Course dates: September 5 - October 2; October 10 - November 6*

*Cost: \$45 (member) or \$145 (non-member) | Available for 1 graduate credit through ASU*

*Facilitator: Kyleene Pedrett (Cherry Creek Education Association)*



## A Little Guide for Teachers: Diversity in Schools

The book, *A Little Guide for Teachers: Diversity in Schools*, will help guide our thinking and learning. We will explore topics such as the importance of being knowledgeable on histories, trends, and controversies in the language of diversity. As well as creating culturally connected spaces, catering for all voices, modeling respect for diversity in schools, having belonging through curriculum, creating global citizens, and influencing positive change.

*Course dates: September 5 - October 2; October 10 - November 6*

*Cost: \$45 (member) or \$145 (non-member) | Available for 1 graduate credit through ASU*

*Facilitator: Kyleene Pedrett (Cherry Creek Education Association)*



## The Leader Within: Who Am I?

Leaders influence. They set the stage for others to flourish and perform to their potential. Being a leader starts with knowing yourself. This requires an understanding of your strengths, weaknesses, values, beliefs, motivations, and desires. In this course, you will discover what motivates you and how you work best. This is the first step in becoming the leader you are capable of being. Once you understand who you are, not who others think you are, you are ready to lead and inspire others to their own greatness. There is a leader inside everyone; it's time to discover it.

*Course dates: September 5 - October 9*

*Cost: \$90 (member) or \$190 (non-member) | Available for 2 graduate credits through ASU*

*Facilitator: Stacie Albi (District Twelve Educators' Association)*



## Building Community Through Morning Meetings

It is essential for students to feel safe and comfortable in the classroom. Research has been very clear that students have to know they are cared for, they are safe, they matter, etc. A morning meeting is a place to greet each other, share personal news or news about school, create a trusting and caring environment, and a focus on positive behavior. This study of current research and the use of the text, *The Morning Meeting Books: K-8*, by Roxann Kriete & Carol Davis will give educators an immediate application for their classrooms.

*Course dates: September 5 - October 2*

*Cost: \$45 (member) or \$145 (non-member) | Available for 1 graduate credit through ASU*

*Facilitator: Jeremiah Moore (Platte Valley Education Association)*



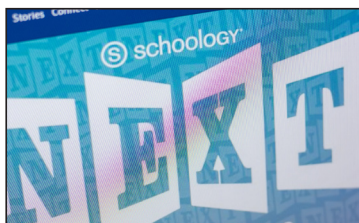
## Stress Management for Educators

Do you have stress in your life from work, family, friends, finances, health, technology, etc.? Do you feel burned out with all that you are asked to do? Is your current stress level okay, but you want methods to manage stress in the future? This class will help you learn how stress affects you in the short and long term, identify the stressors in your life, and practice techniques that take less than ten minutes to lower stress and boost the quality of life.

*Course dates: September 5 - October 2; October 31 - November 27*

*Cost: \$90 (member) or \$190 (non-member) | Available for 2 graduate credits through ASU*

*Facilitator: Catherine Lee (District Twelve Educators' Association)*



## Advanced Schoology: Take Your Skills to the Next Level

Educators will actively participate in online learning to further develop their Schoology page with a variety of engaging and interactive lessons and web design. By the end of this course, educators will be able to do the following: Create banners and buttons that link to a variety of websites; create interactive lessons using programs such as Edpuzzle or Flipgrid and embed them into the Schoology website; create tutorial videos for students and families about how to navigate your website; create a variety of assessments and activities.

*Course dates: September 5 - October 2; October 31 - November 27*

*Cost: \$90 (member) or \$190 (non-member) | Available for 2 graduate credits through ASU*

*Facilitator: Catherine Lee (District Twelve Educators' Association)*



## Classroom Technology Management & Troubleshooting

Technology in our classrooms is here to stay. As an educator, you probably know about the same (or maybe even less!) than our students do about the devices they are using on a daily basis. In this class, we'll discuss common chromebook problems and solutions. We will also explore best practices for successful technology integration for students including behavior matrices, plans for usage and monitoring, as well as how to increase student engagement and creation.

*Course dates: September 6 - October 10*

*Cost: \$90 (member) or \$190 (non-member) | Available for 2 graduate credits through ASU*

*Facilitator: Tiffany LoSasso (Jefferson County Education Association)*



## Music Education for Social Change

This self-paced course will offer participants an opportunity to create a pedagogy for themselves and their students for music education which focused on three critical concepts: community, expression, and noticing. It will encourage educators to create and implement lessons focused on those three elements, as well as offering a ground in critical pedagogy. It is open to educators in all disciplines. The concepts to be explored include critical pedagogy, music education as connection, honoring and sharing lived experiences, and the dangers of activist music education. These will be applied by the participants in the creation of lessons they can implement with their own students.

*Course dates: September 10 - October 10*

*Cost: \$45 (member) or \$145 (non-member) | Available for 1 graduate credit through ASU*

*Facilitator: Timothy Brown (Denver Classroom Teachers' Association)*



## Build a Culture of Feedback

Teacher learners will discover how to cultivate a rich culture of feedback in their classroom and school to improve student and teacher learning and efficacy. Each week will focus on a different element of feedback: foundations, teacher to student, student to student, student to teacher, and educator to educator. Participants will be presented with a variety of instructional techniques that can be directly applied or modified for all grade levels, K-12.

*Course dates: September 12 - October 16*

*Cost: \$90 (member) or \$190 (non-member) | Available for 2 graduate credits through ASU*

*Facilitator: Anne Sutton (Windsor-Severance Education Association)*

**All class dates are subject to change based on facilitator availability. All classes are subject to cancellation if fewer than five students enroll by the official class start date.**

## Follow and like COpilot on social media!



CEA COpilot



@cea\_copilot



#cea\_copilot





## Teach Like A Pirate: Increase Student Engagement, Boost Your Creativity, and Transform Your Life As an Educator

In this book educators are encouraged to stretch themselves beyond their comfort levels and challenges them to create classrooms that are amazing, unique places filled with outrageously engaging content and activities. Written for teachers of all subjects and at all grade levels, this book explains how to generate new passion for teaching and discover new depths of creativity, in order to produce lesson plans that captivate and “hook” students. Be ready to tap into your passion as a teacher, even when you’re less than excited about the subject.

*Course dates: September 12 - October 23*

*Cost: \$90 (member) or \$190 (non-member) | Available for 2 graduate credits through ASU*

*Facilitator: Sherrill Thorne (Colorado Springs Education Association)*



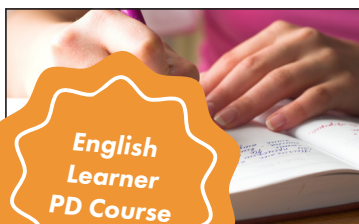
## Hacking School Discipline: 9 Ways to Create a Culture of Empathy and Responsibility based on Restorative Justice

In this book study, educators will learn 9 ways to create a culture of empathy and responsibility using restorative justice and other techniques. They will learn how to not only change behaviors by replacing traditional school discipline practices that do not work, but transform students into productive citizens, accountable for their own actions.

*Course dates: September 12 - October 9*

*Cost: \$45 (member) or \$145 (non-member) | Available for 1 graduate credit through ASU*

*Facilitator: Stephanie Fast (Littleton Education Association)*



## The Writing Revolution

*The Writing Revolution* is based on six principles that are evidence-based and intended for any grade level and curriculum. The book is intentional in teaching writing in a way that is manageable and chunked out for both teachers and students. This book is ideal for students who are learning how to write, English Language Learners, struggling writers, and students who want to take their writing to the next level.

*Course dates: September 12 - October 16*

*Cost: \$45 (member) or \$145 (non-member) | Available for 1 graduate credit through ASU*

*Facilitator: Kathy Zaleski (District Twelve Educators' Association)*



## Equipped for Reading Success

Foundational reading skills help crack the code for all beginning readers and struggling readers of any age! We will read the book *Equipped for Reading Success* by David Kilpatrick which is described as a comprehensive, step-by-step program for developing phonemic awareness and fluent word recognition. Engage in discussions and assignments using the resources and assessments included in the book.

*Course dates: September 12 - October 9*

*Cost: \$45 (member) or \$145 (non-member) | Available for 1 graduate credit through ASU*

*Facilitator: Rachel Graham (Estes Park Education Association)*



## Transgender and Gender Expansive Youth

This course is designed to help professionals in education better understand transgender and nonconforming youth, as well as how to support this vulnerable population. As our world evolves and changes, it behooves us to stay up with the current changes to understand, work with and support all students. Teachers will actively participate in online learning to further develop their understanding of the language used, needs of our student population, how to support transgender and nonconforming youth in our schools, and the law.

*Course dates: September 12 - October 9; October 10 - November 6*

*Cost: \$90 (member) or \$190 (non-member) | Available for 2 graduate credits through ASU*

*Facilitator: Elizabeth Sedalnick (District Twelve Educators' Association)*





## Time Management for the Educator, Counselor, and Administrator

Can't find the time for a moment to yourself? Feeling pressured and like you need to reset? This class gives you a set of strategies to help you make sure you're taken care of so you can take care of others in your important role in education.

*Course dates: September 12 - October 9; November 7 - December 4*

*Cost: \$90 (member) or \$190 (non-member) | Available for 2 graduate credits through ASU*

*Facilitator: Elizabeth Sedalnick (District Twelve Educators' Association)*



English  
Learner  
PD Course

## Grading for Equity

Grading for Equity: What It Is, Why It Matters, and How It Can Transform Schools and Classrooms is a book study that analyzes the flaws within traditional grading practices and methods that can be implemented in order to create more equitable grading systems. This book will reflect on existing grading practices in many classrooms and challenge teachers to adjust their current systems in order to grade students in an accurate and bias-resistant manner. This course is appropriate for teachers wanting to reflect on their grading practices, why they grade with the systems they use, and implement equitable changes to increase student accountability and grades that reflect a student's mastery of the class.

*Course dates: September 19 - October 23; October 3 - November 6*

*Cost: \$45 (member) or \$145 (non-member) | Available for 1 graduate credit through ASU*

*Facilitator: Kaitlyn Corcoran (Poudre Education Association)*



## Creating a Trauma-Sensitive Classroom

This is a book study of *Fostering Resilient Learners: Strategies for Creating a Trauma-Sensitive Classroom*. In this book, Souers and Hall combine their experiences as a mental health expert and school administrator to inform those working with children spanning from preschool to high school. The book presents readers with a background about trauma and how it affects the brain. Then the authors give strategies to create a trauma-sensitive classroom. In the study, we will record our thoughts about the text and discuss ideas on how to best help the students in our classrooms!

*Course dates: September 19 - October 23*

*Cost: \$45 (member) or \$145 (non-member) | Available for 1 graduate credit through ASU*

*Facilitator: Jeremiah Moore (Platte Valley Education Association)*



English  
Learner  
PD Course

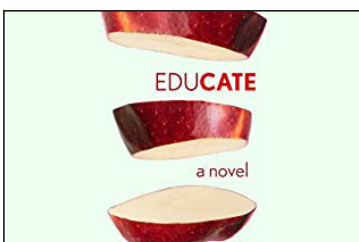
## Using the Lens of MTSS to Support Students with Fidelity

Educators will actively participate in an online learning to further develop their understanding of Multi-Tiered Systems of Support (MTSS). Specific applications will be made to practice, as teachers will use learned skills of MTSS and develop a plan for a specific student or group of students, a school or district or even a board of education to implement MTSS.

*Course dates: September 19 - October 23*

*Cost: \$45 (member) or \$145 (non-member) | Available for 1 graduate credit through ASU*

*Facilitator: Erica Adamiak (Cherry Creek Education Association)*



## Book Study — EduCate: A Novel

This course will be a book study of *EduCate: A Novel*, facilitated by the author who is also a middle school language arts teacher. Participants will engage in a weekly discussion board and individual reflection activities. In this novel, author and CEA Ambassador Fellowship alumni, Julie White blurs the lines between fact and fiction. The book was inspired by the events of 2020 and Julie wrote on the weekends while she was teaching middle school and thinks it would appeal to readers who want a time capsule of 2020-21. Together, we can connect to the novel and our shared experiences and process the historical time we are in. By the end of the course, you'll be inspired to share your story and voice!

*Course dates: September 19 - October 23*

*Cost: \$45 (member) or \$145 (non-member) | Available for 1 graduate credits through ASU*

*Facilitator: Julie White (Englewood Educators' Association)*



English  
Learner  
PD Course

## Picture Book Trios: Meeting Needs of Diverse Learners with a Cross-Curricular Approach

Do you love teaching with picture books? In this course, you will learn how to choose books in trios centered around a theme, while using primary sources, vocabulary strategies, and geographic skills at the same time. These strategies will help support ELL students, as well as the rest of the class and can be tailored to your needs as diverse classrooms. You will gain the knowledge on how and where to find diverse picture books and other materials for strong content learning.

*Course dates: September 25 - October 29; October 20 - December 3*

*Cost: \$90 (member) or \$190 (non-member) | Available for 2 graduate credits through ASU*

*Facilitator: Christy Howard (Colorado Springs Education Association)*



## The New Jim Crow Book Study

The New Jim Crow course is a book study that dives into the mass incarceration of predominantly African American men, along with other minorities and socio-economically disadvantaged groups in the United States. This book study will encourage much discussion, reflection, and sometimes uncomfortable conversations among the participants in the course to further understand the content. It is ideal for educators who are wanting to have a better understanding of the American incarceration system, the institutional racism many students carry with them to school, and to investigate solutions to alleviating mass incarceration.

*Course dates: September 26 - December 4*

*Cost: \$90 (member) or \$190 (non-member) | Available for 2 graduate credits through ASU*

*Facilitator: Kathy Zaleski (District Twelve Educators' Association)*



## The Art of Coaching: Effective Strategies for School Transformation

This course is a book study of Elena Aguilar's book, *The Art of Coaching: Effective Strategies for School Transformation*. Participants will collaboratively discuss the 15 chapters in the text and reflect on implications in their own coaching. Readers find Elena's book to be informative and actionable, inspiring and illuminating, and applicable in many contexts.

*Course dates: September 26 - November 7*

*Cost: \$45 (member) or \$145 (non-member) | Available for 1 graduate credit through ASU*

*Facilitator: Kelsey Kempter (Denver Classroom Teachers' Association)*



## Thriving Educators: Daily Activities to Cultivate Your Emotional Resilience

Do you want to get through your next school year a bit more smoothly, with confidence, self awareness and emotional resilience? You can learn strategies that will help you get a fresh start before you go back to the classroom! Join me in working through multiple activities from Elena Aguilar's Onward workbook. Let's gather some tools to take care of ourselves as well as our students! This book study will focus on the 2nd half of The Onward Workbook. You do not need to take the Survival section first as there is no required order.

*Course dates: September 26 - November 7*

*Cost: \$45 (member) or \$145 (non-member) | Available for 1 graduate credit through ASU*

*Facilitator: Kim McLachlan (District Twelve Educators' Association)*



English  
Learner  
PD Course

## Leaders for Just Schools

This course is based upon NEA's Leaders for Just Schools program. Teachers will actively participate in online and in-person learning to further develop their understanding of equity and its impact on learning environments. Teachers will ultimately examine ways to evaluate the equity of their own schools and create a plan to improve conditions of equity in their school.

*Course dates: September 26 - December 4*

*Cost: Free (member) or \$190 (non-member) | Available for 2 graduate credits through ASU*

*Facilitator: Ang Anderson and Rhiannon Wenning (Jefferson County Education Association)*



## Executive Functioning Skills in Children and Adolescents

Executive functioning skills describe a person's ability to organize our behavior. Through the use of these skills, we can plan and organize activities, sustain attention, and persist to complete a task. Many students struggle with these skills and require additional support to help develop these skills. This course will look at interventions that can be used in the classroom to support students with the development of these executive functioning skills.

*Course dates: October 2 - November 13*

*Cost: \$90 (member) or \$190 (non-member) | Available for 2 graduate credits through ASU*  
*Facilitator: Lindsay Rider (Brighton Education Association)*

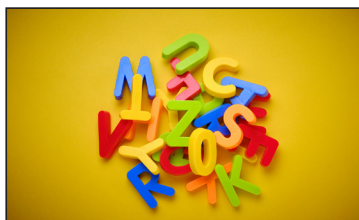


## Happy Teachers Change the World: A Guide for Cultivating Mindfulness in Education

Do you feel like this was one of the most difficult years of your career? Are you feeling burnt out, frustrated, and overall burnt out? If you answered "yes" to any of these questions, this course is for you. Using the book "Happy Teachers Change the World," we will learn how to cultivate mindfulness to reignite that spark for teaching that you had when you first began your career. This course is the perfect fit for any teacher, child, or individual wanting to become more in touch with themselves and their connection to the world.

*Course dates: October 2 - November 27*

*Cost: \$90 (member) or \$190 (non-member) | Available for 2 graduate credits through ASU*  
*Facilitator: Lindsay Rider (Brighton Education Association)*



## Overcoming Dyslexia

Participants will gain knowledge that provides the foundation for the latest science-based diagnosis of dyslexia and effective interventions for reading difficulties. The course will go in depth how skilled reading develops and when to expect the successive milestones. Participants will also learn how to recognize the specific clues that should alert them that reading is not progressing smoothly. This course will provide both educators who work with struggling readers of all ages with practical resources on helping them become better readers.

*Course dates: October 3 - November 27*

*Cost: \$90 (member) or \$190 (non-member) | Available for 2 graduate credits through ASU*  
*Facilitator: Larisa Baskin (Aurora Education Association)*



## Boom Cards for Engagement and Differentiation

This course will provide participants with an opportunity to explore fun ways to engage students while differentiating content using Boom Cards. Boom cards are interactive online games and activities designed for targeted practice and mastery of skill. Boom Cards provide short, fun activities for students and allow teachers to progress monitor and collect data seamlessly. The course will include articles and videos to help educators learn about the power of Boom Cards as an education tool, utilize a free Boom account or expand their practice to build their own Boom Cards based on their specific student needs.

*Course dates: October 3 - October 30*

*Cost: \$45 (member) or \$145 (non-member) | Available for 1 graduate credit through ASU*  
*Facilitator: Mary Robinson (District Twelve Educators' Association)*



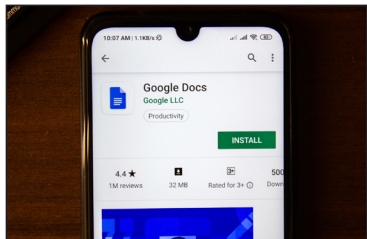
## Movement Strategies to Increase Student Engagement

Study after study shows that physical activity activates the brain, improves cognitive function, and is correlated with improved academic performance. This class explores how to tap into the potential of movement in the classroom. Over the course of five weeks, we will learn to easily redesign worksheets to incorporate movement, explore the benefits and drawbacks of classroom simulations, give resources for brain breaks, and more!

*Course dates: October 3 - November 6*

*Cost: \$90 (member) or \$190 (non-member) | Available for 2 graduate credits through ASU*  
*Facilitator: Dwight Pickering (Colorado Springs Education Association)*





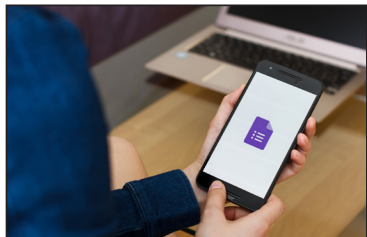
## Google Docs Basics

Educators will engage in online learning to initiate and/or continue to develop their basic understanding of Google Docs. The focus will be on skills that will enable teachers to create, distribute, and collaborate with colleagues and students using Google Docs. Educators will learn to utilize all basic features of Google Docs for both professional use and as a workshop model in the Google Classroom with students.

*Course dates: October 3 - October 31; October 31 - November 27*

*Cost: \$45 (member) or \$145 (non-member) | Available for 1 graduate credit through ASU*

*Facilitator: Elissa Brost (Colorado Springs Education Association)*



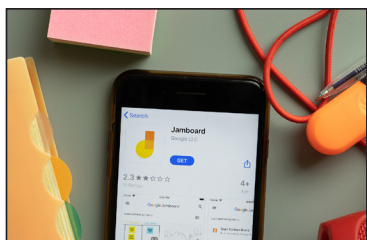
## Google Forms Basics

Educators will engage in online learning to initiate and/or continue to develop their basic understanding of Google Forms. The focus will be on skills that will enable teachers to create, distribute, and grade Forms utilized as formative assessments. Educators will investigate integrating curriculum, and other resources into their Forms, polling/survey features, and more. Specific focus will be how to utilize Google Forms in a Google Classroom.

*Course dates: October 3 - October 31; October 31 - November 27*

*Cost: \$45 (member) or \$145 (non-member) | Available for 1 graduate credit through ASU*

*Facilitator: Elissa Brost (Colorado Springs Education Association)*



## Google Jamboard Basics

Learners will learn to use and implement the multitude of options for Google Jamboard. Skills will emphasize whiteboard features, collaboration (adult and/or student), and polished and interactive presentations. Learners will collaborate on use in classrooms and with staff, both teacher and student-led uses.

*Course dates: October 3 - October 31; October 31 - November 27*

*Cost: \$45 (member) or \$145 (non-member) | Available for 1 graduate credit through ASU*

*Facilitator: Elissa Brost (Colorado Springs Education Association)*



## Google Sheets Basics

Educators will engage in online learning to initiate and/or continue to develop their basic understanding of Google Sheets. The focus will be on skills that will enable teachers to create, distribute, and collaborate with colleagues and students using Google Sheets. Educators will learn to utilize all basic features of Google Sheets for both professional use and as a workshop model in the Google Classroom with students.

*Course dates: October 3 - October 31; October 31 - November 27*

*Cost: \$45 (member) or \$145 (non-member) | Available for 1 graduate credit through ASU*

*Facilitator: Elissa Brost (Colorado Springs Education Association)*



## Google Slides Basics

Educators will engage in online learning to initiate and/or continue to develop their basic understanding of Google Slides. The focus will be on skills that will enable teachers to create, distribute, and collaborate with colleagues using Google Slides. Teachers will learn to work beyond standard templates, creating custom presentations to facilitate instruction that utilizes multiple media and presentation choices.

*Course dates: October 3 - October 31; October 31 - November 27*

*Cost: \$45 (member) or \$145 (non-member) | Available for 1 graduate credit through ASU*

*Facilitator: Elissa Brost (Colorado Springs Education Association)*

**All class dates are subject to change based on facilitator availability. All classes are subject to cancellation if fewer than five students enroll by the official class start date.**





## Yoga in the Classroom

Participants will explore ways to bring yoga into the classroom to help students learn to combine breath and movement in a school setting. Yoga provides a great opportunity to learn brain breaks that are movement based while also incorporating balance, breath, coordination and self awareness.

*Course dates: October 3 - November 12*

*Cost: \$135 (member) or \$235 (non-member) | Available for 3 graduate credits through ASU*

*Facilitator: Jan Pratt (Colorado Springs Education Association)*



## The Body Keeps the Score: Brain, Mind, Body in the Healing of Trauma

Teachers will explore what trauma is and looks like, how it might present in the population, and how trauma has the ability to reshape the body and brain, compromising the sufferer's capacities for pleasure, engagement, self-control and trust. The book then explores innovative treatment options that can help activate the brain's neuroplasticity.

*Course dates: October 3 - November 19*

*Cost: \$90 (member) or \$190 (non-member) | Available for 2 graduate credits through ASU*

*Facilitator: Jan Pratt (Colorado Springs Education Association)*



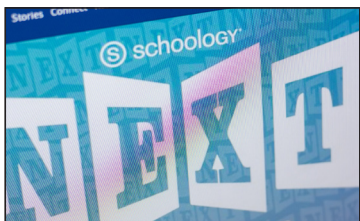
## Trauma-Proofing Your Kids

This book study focus's on how to help children cope with various types of trauma that they might have or may experience in their lives. The areas covered in this book study include trauma resilience, trauma mitigation through activities for falls, medical procedures and other trauma inducing situations, sexual trauma, trauma of divorce or separation of a family, grief recovery and community crisis intervention. This book offers practical tools to help children and families cope with and build resilience through life's traumas.

*Course dates: October 3 - November 19*

*Cost: \$90 (member) or \$190 (non-member) | Available for 2 graduate credits through ASU*

*Facilitator: Jan Pratt (Colorado Springs Education Association)*



## Creating an Interactive Schoology Website

In this class, you will learn to set up a class through Schoology. You will be able to assign lessons that can include videos, documents, tests, quizzes, and classroom discussions. You can take attendance and set up a grade book. You can use Schoology as a way to have a blended classroom or to purely house what you've done so that students can check out what they have missed while they were absent. You can archive your class and then copy what you've created for the following year so that you won't have to recreate the wheel.

*Course dates: May 9 - June 5; June 6 - July 3; October 3 - October 30*

*Cost: \$90 (member) or \$190 (non-member) | Available for 2 graduate credits through ASU*

*Facilitator: Catherine Lee (District Twelve Educators' Association)*



## Lessons on Local Government: Local Issues Are Hot and Local Government Is Cool

Local Government is Cool! Learn to incorporate local government programs and issues in your elementary or secondary classroom. Issues like recycling, justice, water resource issues, school safety, testing, and park planning are terrific ways to engage students with local government. Local topics allow students in any grade to practice key citizenship skills and to make a difference. There is no better way to prepare students for civic life than with issues right out their back door. Experience Lessons on Local Government's (LOLG) River City Needs Water simulation, Local Government on Parade, and Local Leader in the Classroom Kit, plus other free resources. Teachers will engage with local leaders at lunch and receive a \$50 gift card for attending.

*Course dates: June 8 - June 30*

*Cost: \$45 (member) or \$145 (non-member) | Available for 1 graduate credit through ASU*

*Facilitator: Kent Willmann (Colorado Education Association - Retired)*



## Gifted and Talented: A Primer for Student Success

In *Gifted and Talented: A Primer for Student Success*, educator learners will explore the characteristics, challenges, and best practices of engaging gifted and talented students in the classroom. By understanding the unique qualities of GT students, educators will be better equipped to handle the challenges faced by students, parents, and educators as they foster growth within the child, thereby inspiring the joy of continued learning.

*Course dates: October 10 - November 13*

*Cost: \$45 (member) or \$145 (non-member) | Available for 1 graduate credit through ASU*

*Facilitator: Anne Sutton (Windsor-Severance Education Association)*



## Going Deeper with Standards-based Grading

In this course, teachers will actively participate in online learning to further develop their understanding of Standards-based grading. Teachers will continue the work of unpacking their identified essential standards to create proficiency scales (rubrics) and assessment tasks. Discussions will continue around standards-based grading in the classroom, communication, data analysis, and work habits. This course is encouraged to be taken with teams, but it is not required.

*Course dates: October 10 - November 20*

*Cost: \$90 (member) or \$190 (non-member) | Available for 2 graduate credits through ASU*

*Facilitator: Brittany Osborn (Poudre Education Association)*



## Google Level 1 Certification Training

This course is designed to provide educators with the confidence and understanding of how to deliver the Google suite within their classroom and workplace. Educators will engage in a collaborative learning environment with other colleagues examining how using technology in the classroom and work environment can contribute to student achievement.

*Course dates: October 10 - December 4*

*Cost: \$90 (member) or \$190 (non-member) | Available for 2 graduate credits through ASU*

*Facilitator: Robert Thompson (Colorado Education Association)*



## Permission to Feel: Unlocking the Power of Emotion to Help Our Kids, Our Society and Ourselves Thrive

This course is a book study on Marc Brackett's best selling book, *Permission to Feel*. Based on research from the Yale Center for Emotional Intelligence, this course will focus on practical and research based five keys to emotional intelligence and how those impact education and learning. Educators will learn his technique known as "Ruler Training" and transform their emotional literacy.

*Course dates: October 10 - November 6*

*Cost: \$45 (member) or \$145 (non-member) | Available for 1 graduate credit through ASU*

*Facilitator: Stephanie Fast (Littleton Education Association)*



## Modeling the Way: A Deep Dive Into Your Own SEL Skills

Social emotional learning is shown to be foundational when setting the stage for academic learning. SEL leads to stronger relationships, a sense of belonging, and a more supportive learning environment. As educators, social emotional skills can also have a positive impact on our own personal and professional success. In order to effectively teach SEL, we should reflect on our own skills, acknowledge where we're at, and continue to expand these practices. Doing this allows us to best model and teach those skills to our students. This course will look at CASEL's five core competencies.

*Course dates: October 17 - November 20*

*Cost: \$45 (member) or \$145 (non-member) | Available for 1 graduate credit through ASU*

*Facilitator: Stacie Albi (District Twelve Educators' Association)*



## **White Fragility: Why It's So Hard for People to Talk about Racism**

This book study analyzes the system of white supremacy and why it is challenging for white people to discuss racism. As the student population becomes increasingly diverse, "it is essential educators develop skills to understand and examine bias, racism, and race, especially their own." Robin DiAngelo's book examines how white fragility has developed, how it furthers the racial caste system, and how to make repairs and move towards systematic change. This course is ideal for the educator wanting to learn how to become more anti-racist, to challenge systems of white supremacy, and to consider what this work looks like within education.

*Course dates: October 17 - November 20*

*Cost: \$45 (member) or \$145 (non-member) | Available for 1 graduate credit through ASU*

*Facilitator: Kathy Zaleski (District Twelve Educators' Association)*



## **Grading Smarter, Not Harder: Assessment Strategies that Motivate Kids and Help Them Learn**

This course is a book study of Myron Dueck's book *Grading Smarter Not Harder – Assessment Strategies That Motivate Kids and Help Them Learn*. "Decades of research point to indisputable evidence that grading penalties are far less effective than feedback and personalized learning." This underlying theme to the book drives the learner's understanding of grading and assessments in today's classroom. Participants will collaboratively discuss the themes of grading, homework, unit plans, retesting and creativity as they relate to assessments.

*Course dates: October 17 - November 27*

*Cost: \$45 (member) or \$145 (non-member) | Available for 1 graduate credit through ASU*

*Facilitator: Cheryl Mosier (Jefferson County Education Association)*



## **Using GoFormative to Act on Live Responses and Track Student Growth**

Formative enables teachers to build their own assessments and assignments, or pull and customize "formatives" from the Library of thousands of pre-made materials (including Engage NY, Illustrative Math, Open Up Resources). Educators can act on live student responses to intervene and differentiate as needed; give feedback and auto-grade students' work; track student growth over time on specific content standards; visualize student performance across assignments/assessments; and easily integrate supportive tools, like Google Classroom, Flipgrid, Desmos, Padlet and other resources.

*Course dates: October 24 - November 27*

*Cost: \$90 (member) or \$190 (non-member) | Available for 2 graduate credits through ASU*

*Facilitator: Erin-Rose Schneider (East Grand Education Association)*



## **Build an Awesome Class Website with Google Sites**

Google Sites is a collaborative tool that allows you to easily create a website to publish course content and to share class materials with students and guardians. Sites offer an easy way to create pages and insert digital media so there is no need to know HTML or other programming languages, Google has mastered WYSIWYG ("what you see is what you get"). This course is designed to help educators build and design a website in Google Sites (or to revise their current Site). We will also explore different uses of Google Sites for both teachers and students. This course is appropriate for any educator who has working knowledge of the Google Suite of products and is willing to extend their knowledge. By the end of the course participants will have a working Google Site that they can use for their classroom.

*Course dates: October 24 - November 20*

*Cost: \$45 (member) or \$145 (non-member) | Available for 1 graduate credit through ASU*

*Facilitator: Erin-Rose Schneider (East Grand Education Association)*



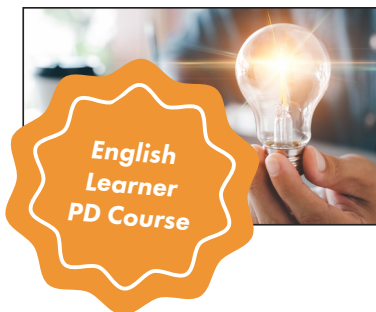


## Personalizing Learning to Keep Students at the Center

In this *Students at the Center* book study, educator learners will be introduced to the basic tenets of personalized learning and how it can positively impact student success. Through the course text, educators will also engage with skills essential to student growth and development through the 16 Habits of Mind first created by Arthur L. Costa and Bena Kallick.

*Course dates: October 31 - December 4*

*Cost: \$45 (member) or \$145 (non-member) | Available for 1 graduate credit through ASU*  
*Facilitator: Anne Sutton (Windsor-Severance Education Association)*



## Visible Learning for Literacy

Almost everything teachers do when working with students improves student achievement. But only a few things work when it comes time for students to demonstrate a year's worth of growth in literacy. This book study will explore how to match instructional approaches with specific phases of learning, understand how impactful your teaching is and what to do when your impact is not sufficient.

*Course dates: October 31 - November 27*

*Cost: \$45 (member) or \$145 (non-member) | Available for 1 graduate credit through ASU*  
*Facilitator: Larisa Baskin (Aurora Education Association)*



## Positive Mindset Habits for Teachers: 10 Ways to Reduce Stress, Increase Engagement and Reignite your Passion for Teaching

In this book study, educators will learn 10 strategies that increase their happiness, reduce their stress and enhance their passion in the classroom. The course will focus on how educational professionals can use growth mindset to use practical and tangible ways to improve their craft and bring more joy into their lives and classrooms.

*Course dates: November 7 - December 4*

*Cost: \$45 (member) or \$145 (non-member) | Available for 1 graduate credit through ASU*  
*Facilitator: Stephanie Fast (Littleton Education Association)*



## Building Relationships with Students

As we have learned during the Pandemic, building relationships with students is a key piece of what we do as educators. Without relationships, we will be unable to accomplish anything else with students. In this course, we take a look at what, why, and how to build relationships with our students. This is appropriate for all educators at all levels including but not limited to teachers, counselors, administrators, and licensed staff. This is a self paced course and all materials are included.

*Course dates: November 7 - December 4*

*Cost: \$90 (member) or \$190 (non-member) | Available for 2 graduate credits through ASU*  
*Facilitator: Elizabeth Sedalnick (District Twelve Educators' Association)*



Colorado Professional Institute for Learning Online Together

# www.ceacopilot.org





## Advanced Google Tools: Harnessing the Power of Google Level II Certification

This course is designed to build and expand upon the learning offered in the Google Level I course. There are 11 modules for the learner to engage in at their own pace. Once the modules are complete, you will be able to prove your knowledge of the Google platform and join the ranks of Google Level II Educators around the world. The Level 2 Educator badge can be added to your resume, website, school credential, or other professional network. Through this model, educators will engage in a collaborative learning environment with other colleagues examining how using technology in the classroom and for a collaborative work environment can contribute to student achievement. Participants will depart from old systems of thinking to expand upon the foundational structures of the Google for Education framework and consider even further options of a blended learning model. This course is offered to anyone who has already taken the Google Level I training or certification or anyone interested in honing their skills in this additional offering of the Google Suite workshop.

*Course dates: June 20 - July 31*

*Cost: \$90 (member) or \$190 (non-member) | Available for 2 graduate credits through ASU*

*Facilitator: Robert Thompson (Colorado Education Association)*



## Music and Social Emotional Learning

Teachers will further develop their understanding of social emotional learning in music education. Specific applications will be made to practice, as teachers will create five lesson plans and one assessment rubric over the duration of the course. This course is appropriate for music teachers of all varieties and instructional levels. Other educators are may participate as long as they are willing to create the specified lesson plans, each incorporating music in their respective disciplines.

*Course dates: June 21 - August 1*

*Cost: \$90 (member) or \$190 (non-member) | Available for 2 graduate credits through ASU*

*Facilitator: Timothy Brown (Denver Classroom Teachers' Association)*



## What's in Your Library? Evaluating Your Classroom Library for Cultural Sensitivity

Learners will gather insight on how to audit their classroom library looking at cultural, religious, and gender bias. As learners inventory their classroom student diversity, they will be able to better determine what should be added or deleted to better reach the diversity needs of their students' reading interests.

*Course dates: June 26 - July 30*

*Cost: \$90 (member) or \$190 (non-member) | Available for 2 graduate credits through ASU*

*Facilitator: Christy Howard (Colorado Springs Education Association)*

**All class dates are subject to change based on facilitator availability. All classes are subject to cancellation if fewer than five students enroll by the official class start date.**



## A Teacher's Path to Understanding Childhood Trauma

Educators will view video segments of Dr. Bruce D. Perry, discuss selected readings, learn how childhood trauma (adverse childhood experiences) can impact any child, and develop a plan to regulate themselves and prepare for students who may be affected by trauma.

*Course dates: June 26 - August 4*

*Cost: \$45 (member) or \$145 (non-member) | Available for 1 graduate credit through ASU*

*Facilitator: Kim Venegas (Greeley Education Association)*



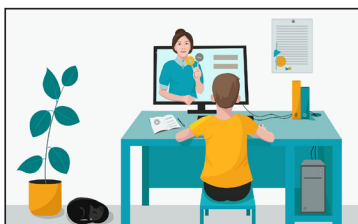
## Understanding the Science of Foundational Reading Skills

Learn how foundational reading skills are an integral part when learning how to read. Apply this knowledge to your classroom whether you are a general education teacher in a primary classroom, teach intervention for struggling readers or are an intermediate or secondary teacher working with students who are facing difficulties with reading proficiency. Teachers will participate in weekly assignments and have the opportunity to collaborate with others. Learn the 'why' behind teaching reading fundamentals and how you can respond to individual student needs appropriately in any setting.

*Course dates: June 27 - July 24*

*Cost: \$45 (member) or \$145 (non-member) | Available for 1 graduate credit through ASU*

*Facilitator: Rachel Graham (Estes Park Education Association)*



## Flipgrid Level 2: How to Use Flipgrid Advanced Features to Increase Student Collaboration & Engagement

Teachers will explore various advanced Flipgrid features and learn how to utilize Flipgrid in combination with other apps. This course is appropriate for teachers of elementary through high school who already have a basic knowledge of Flipgrid. Specialists, instructional coaches, and administrators are invited to join; they will be asked to work within a discipline of their choosing. Educators should have basic knowledge of Flipgrid and/or have taken Flipgrid Level 1 prior to taking this class. This course can be taken simultaneously with Flipgrid Advanced Strategies.

*Course dates: June 27 - July 24*

*Cost: \$45 (member) or \$145 (non-member) | Available for 1 graduate credit through ASU*

*Facilitator: Melissa Murphy (District Twelve Educators' Association)*



## Disrupting Thinking: Why How We Read Matters

This course is a book study of Kylene Beers and Robert E. Probst's latest work *Disrupting Thinking: Why How We Read Matters*. Have you read a book that pulls at the heart strings and inspires you to make changes? Beers and Probst give readers applicable ways to get students to engage with reading at that deep of a level. The text is very practical with examples ranging from kindergarten through college level teaching.

*Course dates: June 27 - July 24*

*Cost: \$45 (member) or \$145 (non-member) | Available for 1 graduate credit through ASU*

*Facilitator: Jeremiah Moore (Platte Valley Education Association)*



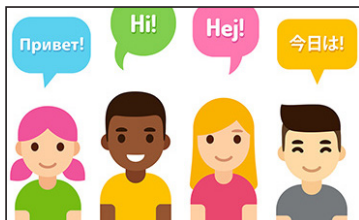
## Daily STEM

In this book study teachers will learn how to create STEM culture in their classroom and communities. Teachers will explore what a sustainable STEM culture looks like and be challenged to think beyond 3D printers and expensive robots. What does it look like to make STEM relevant to every kid and infuse it into every classroom? This course will help teachers to locate STEM connections in the everyday.

*Course dates: June 27 - August 1*

*Cost: \$45 (member) or \$145 (non-member) | Available for 1 graduate credit through ASU*

*Facilitator: Sarah Pomeroy (Summit County Education Association)*



## Distinguishing Language Acquisition from Learning Disabilities

This book study will provide participants with an opportunity to explore the differences between language acquisition and learning disability in English Language Learners who are struggling to read. The book will help educators make more informed choices around strategies and services to best support English Language Learners. The updated edition includes expanded information on appropriate Multi-Tier System of Support (MTSS), nine common misconceptions that can lead to students being misidentified as special education students, evidence based practices for more successful teaching for students acquiring English and appropriate techniques for assessing English Language Learners for special education. Participants will analyze their schools current teaching practices, MTSS procedures and brainstorm improvements to these systems.

*Course dates: June 27 - August 1*

*Cost: \$45 (member) or \$145 (non-member) | Available for 1 graduate credit through ASU*

*Facilitator: Mary Robinson (District Twelve Educators' Association)*



## Pedagogy of the Oppressed Book Study

*Pedagogy of the Oppressed* is a book study that will analyze Paulo Freire's ideas of transforming education from an oppressive institution to one that is more equitable. This book study is ideal for any educator who is working towards creating a more equitable and culturally competent work environment; additionally, it is ideal for any educator, whether it is an elementary school educator, a counselor, dean of students, or superintendent of a district. Participants can expect to collaborate, discuss, and create an action plan that considers the philosophies and examples discussed in Freire's book and in the course.

*Course dates: June 27 - July 31*

*Cost: \$45 (member) or \$145 (non-member) | Available for 1 graduate credit through ASU*

*Facilitator: Kathy Zaleski (District Twelve Educators' Association)*





## **Student Engagement Through Video Production**

Do you find increasingly larger class sizes make it difficult to differentiate and help meet the needs of individual students? Do you want a way to incorporate all voices in your classroom? In this class educators will 1) Choose a video platform to implement with students; 2) Create a plan for students to create videos within units of study; 3) Create a space to house student made videos; 4) Create structures for peer feedback.

*Course dates: September 5 - October 2; November 1 - December 5*

*Cost: \$90 (member) or \$190 (non-member) | Available for 2 graduate credits through ASU*

*Facilitator: Catherine Lee (District Twelve Educators' Association)*



## **The Inclusion Toolbox: Strategies and Techniques for ALL Educators**

Participants will actively participate in online learning to further develop their understanding of developing, implementing and expanding an inclusive program in the classroom and school. Class participants gain techniques and guidance on how to create and sustain an education program for all grades and content areas in order to empower students with disabilities.

*Course dates: July 4 - July 31*

*Cost: \$45 (member) or \$145 (non-member) | Available for 1 graduate credit through ASU*

*Facilitator: Elizabeth White (Colorado Springs Education Association)*



## **The Boy Who Raised as a Dog Book Study**

We will do a book study on *The Boy Who Was Raised as a Dog* to discuss trauma, how it affects children, and how we as educators can understand this and provide simple ideas to use in our relationships with all kids.

*Course dates: July 4 - August 7*

*Cost: \$45 (member) or \$145 (non-member) | Available for 1 graduate credit through ASU*

*Facilitator: Jenny Shoen (Littleton Education Association)*



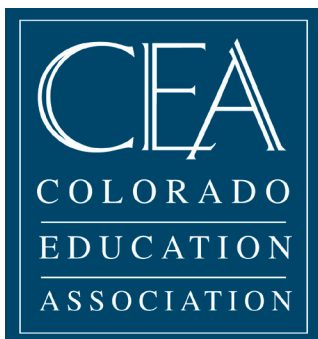
## **Routines for Success in the Classroom and in Life**

The book study will engage participants in reflection, planning and implementation of transformative practices that will lead to more purposeful and engaged classrooms and professional learning teams. Participants will collaboratively discuss strategies and techniques for effectively engaging students within the school culture through self-reflection and character building.

*Course dates: July 11 - August 1*

*Cost: \$45 (member) or \$145 (non-member) | Available for 1 graduate credit through ASU*

*Facilitator: Amy Bohen (Westminster Education Association)*



Colorado Professional Institute for Learning Online Together

# [www.ceacopilot.org](http://www.ceacopilot.org)



## **Integrating Universal Design for Learning (UDL) with CLD to Create a Culturally Responsive Classroom**

This session provides insight into Universal Design for Learning (UDL) with a Culturally Linguistically Diverse lens (CLD) while supporting culturally responsive teaching. Learners will understand the purpose of being proactive with the layout of their content, the language used, and how to bridge the gap between UDL, CLD, and CRT.

*Course dates: June 28 - July 24*

*Cost: \$45 (member) or \$145 (non-member) | Available for 1 graduate credit through ASU*

*Facilitator: Kimberly Adibuah (Aurora Education Association)*



## **Preparing English Language Learners to be 21st Century Citizens**

English language learners' experience with technology can vary greatly from one student to the next. Some kids may have never used a computer while others may be doing all of the troubleshooting! This class will provide ideas for effectively using technology with ELLs, activities for increasing engagement amongst ELL students, and tips and tricks for managing digital citizenship.

*Course dates: June 28 - July 26*

*Cost: \$45 (member) or \$145 (non-member) | Available for 1 graduate credit through ASU*

*Facilitator: Lindsay Rider (Brighton Education Association)*



## **Supporting English Language Learners in Math Class**

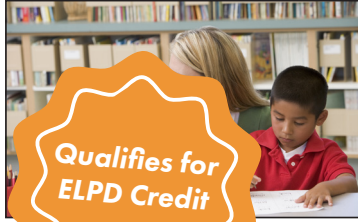
This course is a book study of *Supporting English Language Learners in Math Class* by Kathy Melanese, Luz Chung, & Cheryl Forbes and will study and analyze differentiated supports that can be offered to support English Language Learners during math class. We will analyze and plan to support the language for the content of the lesson along with language to enhance mathematical discussions.

*Course dates: June 28 - July 24*

*Cost: \$45 (member) or \$145 (non-member) | Available for 1 graduate credit through ASU*

*Facilitator: Kelsey Kempter (Denver Classroom Teachers' Association)*





## Designing Lessons for English Language Learners

This is a self-paced course that focuses on best practices and current research to give educators ideas and strategies to use as they are designing lessons for English language learners in their classrooms. It will encourage educators to use the reference sheets they create in this class as they plan to make their content accessible for all students in their classrooms. It provides a platform to share and select ideas that will work best for their students. It strives to meet each educator where they are on their path of professional development with ELLs.

*Course dates: July 5 - August 2*

*Cost: \$45 (member) or \$145 (non-member) | Available for 1 graduate credit through ASU*

*Facilitator: Kara Myers (Westminster Education Association)*



## Understanding Accommodations and Modifications

This course will examine the differences between accommodations and modifications as well as what it means to personalize instruction for students. It will challenge you to make your content accessible for all students and address the individual needs of all learners in your classroom. Teachers will actively participate in online learning to further develop their understanding of accommodations and modifications as they are practiced in the classroom.

*Course dates: July 5 - August 2*

*Cost: \$45 (member) or \$145 (non-member) | Available for 1 graduate credit through ASU*

*Facilitator: Kara Myers (Westminster Education Association)*



## Using Assessment Data in the Reading Workshop

You have collected all this data. Now what? With the help of Jennifer Serravallo, we will explore ways to use data to guide reading instruction and develop plans to help get students to where they need to be. If you want to learn about ways to drop the colors associated with your students' abilities, reading levels that define students, numbers and letters that identify their lack of skills, then this is the perfect class for you! We will explore topics about ways to collect data, analyze data, synthesize data from all the assessments, develop plans to help students, and follow-up methods to progress monitor.

*Course dates: July 5 - August 1*

*Cost: \$45 (member) or \$145 (non-member) | Available for 1 graduate credit through ASU*

*Facilitator: Jeremiah Moore (Platte Valley Education Association)*



## Using Digital Tools to Enhance Your Reader's Workshop

Reader's Workshop is an instructional strategy designed to engage students, differentiate instruction and build intrinsic motivation. However, there is an ever growing need in today's education for students to learn and use digital tools on top of traditional reading practices. So how can we combine the best practices of Reader's Workshop with technology? This course will provide you with ideas and tools to enhance your Reader's Workshop through the use of digital tools. In this course, you will review the main components of the Reader's Workshop Model. Then you will explore online tools that will help you take your workshop digital such as FlipGrid, Screencastify and Newslea. Once you have had the opportunity to choose tools that will work for your students, you will have the opportunity to work with those digital tools and begin creating lessons to use immediately in your classroom.

*Course dates: July 5 - August 1*

*Cost: \$45 (member) or \$145 (non-member) | Available for 1 graduate credit through ASU*

*Facilitator: Nicole Hargreaves (Cherry Creek Education Association)*







**CO**pilot

Colorado Professional Institute for Learning Online Together

**[www.ceacopilot.org](http://www.ceacopilot.org)**