

COpilot

Colorado Professional Institute for Learning Online Together

COLORADO
EDUCATION
ASSOCIATION
est. 1875



www.ceacopilot.org

Spring 2023 Courses

*Enrollment opens
December 8!*

A bit about COpilot

Colorado teachers and education support professionals are deeply committed to every student's success. We want all students to achieve their full potential as individuals and become productive citizens who make positive contributions to society.

We believe that educators provide the stable, nurturing, inspiring environment that makes it possible to teach each student and provide individual attention to each student's learning needs. To this end, we work to ensure that every student has a qualified, caring educator.

We believe that we must change the way educators are recruited, trained, evaluated, supported, and held accountable. We believe we must raise the bar for what it means to be a quality educator by focusing on preparing new educators for the classroom, attracting and retaining educators, providing continuous, high quality professional development for all educators, and promoting effective teachers and quality educators.

We believe that COpilot is one key to achieving these core areas of professional excellence. Through expanding your learning opportunities, you will ensure that all students in Colorado public schools have the benefit of qualified, caring, committed educators throughout their school years.

For more information or if you have questions, please contact us at ceacopilot@coloradoea.org!

Frequently Asked Questions (FAQs):

How do I sign up for a COpilot account?

To create a COpilot account, visit www.ceacopilot.org, click Log In and either verify your Association membership or create a guest account. This easy process doesn't take more than 30 seconds!

How much time does a class take?

Most COpilot classes are 15 instructional hours spread over five or six weeks. Students should expect to spend about three hours per week doing class activities.

Can I earn credit, clock hours, and a certificate?

The answer is a resounding "Yes!" Nearly all of the classes on COpilot qualify for graduate credit from Adams State University. All of the classes are eligible for license renewal hours through the Colorado Department of Education. At the conclusion of each class, you will receive a certificate of completion for your records.

Can I get the syllabus for the class before making a decision?

Absolutely! Just email the Director of Learning Services, Casey Kilpatrick (ckilpatrick@coloradoea.org), for that information.

Can my district use COpilot for its professional development?

CEA has worked hard to make sure districts in partnership with the local association can use COpilot to run all of their professional development. We do not charge districts to use the platform. Instead, our requirement is that the district and local association reach an agreement that dictates the school district will pay members who facilitate the classes a fair stipend. For more information about this kind of opportunity, please contact Casey Kilpatrick at CEA (ckilpatrick@coloradoea.org).

How are classes structured?

All of our classes are fully facilitated, which means you'll have a trained CEA member leading you and teachers from across Colorado through the content. Our classes are time-bound so that the facilitation makes sense. Through using this mostly synchronous method, teachers can more easily collaborate with each other, share experiences, and receive coaching as they practice strategies in their classrooms.

Spring 2023 Class List



The Arts and Social-Emotional Learning

This course is designed to push you creatively and help you make connections towards fully understanding and utilizing Social and Emotional Learning targets. Each Module will require you to create a work of art using various materials and explore how your artwork relates to SEL. By the end of the course, you will have a portfolio of work, and will be able to write your own SEL influenced lesson for ANY SUBJECT!! No Art Experience Required!! You only need a desire to create!

Course dates: January 8 - February 19

Cost: \$135(member) or \$235(non-member) | Available for 3 graduate credits through ASU

Facilitator: Drew Mulligan (Jefferson County Education Association)



English
Learner
PD Course

Grading for Equity

Grading for Equity: What It Is, Why It Matters, and How It Can Transform Schools and Classrooms is a book study that analyzes the flaws within traditional grading practices and methods that can be implemented in order to create more equitable grading systems. This book will reflect on existing grading practices in many classrooms and challenge teachers to adjust their current systems in order to grade students in an accurate and bias-resistant manner. This course is appropriate for teachers wanting to reflect on their grading practices, why they grade with the systems they use, and implement equitable changes to increase student accountability and grades that reflect a student's mastery of the class.

Course dates: January 9 - February 12

Cost: \$45 (member) or \$145 (non-member) | Available for 1 graduate credit through ASU

Facilitator: Kaitlyn Corcoran (Poudre Education Association)



English
Learner
PD Course

Literacy Strategies for the Diverse Classroom Using Edpuzzle

Teachers will actively participate in online learning to further develop their understanding of various literacy strategies to engage specialized populations within the classroom. The application of Edpuzzle will incorporate educational videos related to the teacher's specific content area to create an engaging and interactive learning environment. Teachers will learn how to utilize specific tools within Edpuzzle to reach students who are DHH, ELL, LD, etc.

Course dates: January 9 - February 12; February 26 - April 2

Cost: \$90 (member) or \$190 (non-member) | Available for 2 graduate credits through ASU

Facilitator: Caroline Davis (District Twelve Educators' Association)



English
Learner
PD Course

Advanced Edpuzzle Skills

Teachers will actively participate in online learning to further deepen their understanding of Edpuzzle. You will learn how to leverage your current Edpuzzle skills with engaging, choice driven lessons. You will also learn how to organize your content better and connect your Edpuzzle with your current LMS. If you are familiar with Edpuzzle and are looking to get to the next level of skillset, this is the course for you. You will learn how to use Edpuzzle to leverage engaging, multidimensional instruction and choice. This course is an ideal followup to the course "Literacy Strategies for the Diverse Classroom Using Edpuzzle". If you are looking for a beginner course, I recommend you take that course first, then this course.

Course dates: January 9 - February 12; February 26 - April 2

Cost: \$90 (member) or \$190 (non-member) | Available for 2 graduate credits through ASU

Facilitator: Caroline Davis (District Twelve Educators' Association)



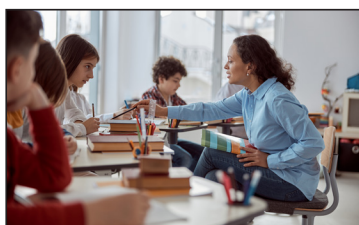
Mastering Accommodations in the General Education Classroom

General Education teachers are required and accountable for providing accommodations that are stated in IEPs and 504 plans to ensure that every student has a fair and equal opportunity to receive Colorado standards-based instruction and demonstrate mastery. However, it can be hit or miss to know how to best use them to improve instructional and assessment practices. In this course, we'll dive into the most common types of accommodations and how they're related to the learning needs of diverse learners. We'll consider how access to grade-level standards is ensured regardless of a disability and strategies to incorporate accommodations into instruction and assessments. Finally, we'll learn about methodologies to deploy them effectively and efficiently. At the end of the course, you'll have a much better understanding of appropriate accommodations for your students and how to utilize them to get the best learning outcomes.

Course dates: January 9 - February 19

Cost: \$45 (member) or \$145 (non-member) | Available for 1 graduate credit through ASU

Facilitator: Amy Hanaughan (Boulder Valley Education Association)



How to Develop Effective Tier 2 Instruction in the General Education Classroom

When proactive, Tier 2 intervention utilizing sound, evidence-based teaching practices is introduced, it can decrease the identification of learning disabilities and create a positive learning environment where students can continue to learn effectively in their general education classroom. In this course, we'll learn how to gather evidence and identify our struggling students, how to design systematic and intensive Tier 2 intervention, and methodologies to monitor student progress. We'll also discuss proactive communication with parents, including fun activities at home to promote student learning and support. At the end of this course, you will have a clear understanding of how to effectively utilize Tier 2 intervention to help narrow the learning gap of struggling students.

Course dates: January 9 - February 19

Cost: \$45 (member) or \$145 (non-member) | Available for 1 graduate credit through ASU

Facilitator: Amy Hanaughan (Boulder Valley Education Association)



Creating Educational Videos to Enhance Student Learning Inside and Outside of the Classroom

This class will help you to create videos that you can post to your websites. The videos will allow you to have a flipped classroom, a blended learning classroom, or merely have videos on your website for those students who are absent. It can be as if there are multiple educators in one classroom if used during class. Students can learn at their own pace because they can watch the video as many times as they need to. It allows the educator to be free to work in small groups or one on one with students while the rest of the class can move ahead.

Course dates: January 9 - February 5; March 6 - April 2

Cost: \$90 (member) or \$190 (non-member) | Available for 2 graduate credits through ASU

Facilitator: Catherine Lee (District Twelve Educators' Association)



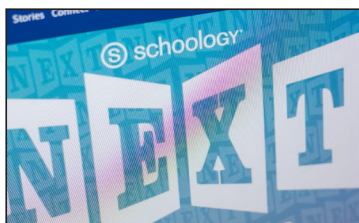
Anger Management for Educators

Anger is a normal emotion that everyone feels from time to time. This class, with the aid of *The Cognitive Behavioral Workbook for Anger: A Step-By-Step Program for Success*, will help you to use a variety of tools, exercises, and self-mastery methods to overcome destructive anger. You will be able to recognize and overcome anger triggers, extinguish anger in the heat of the moment, stop the cycle of blame, tolerate negative emotions, deal with difficult people, and repair broken relationships.

Course dates: January 5 - February 19; February 20 - April 2

Cost: \$135 (member) or \$235 (non-member) | Available for 3 graduate credits from ASU

Facilitator: Catherine Lee (District Twelve Educators' Association)



Creating an Interactive Schoolology Website

In this class, you will learn to set up a class through Schoolology. You will be able to assign lessons that can include videos, documents, tests, quizzes, and classroom discussions. You can take attendance and set up a grade book. You can use Schoolology as a way to have a blended classroom or to purely house what you've done so that students can check out what they have missed while they were absent. You can archive your class and then copy what you've created for the following year so that you won't have to recreate the wheel.

Course dates: January 9 - February 5; March 6 - April 2

Cost: \$90 (member) or \$190 (non-member) | Available for 2 graduate credits through ASU

Facilitator: Catherine Lee (District Twelve Educators' Association)



Branching Google Forms for Formative Assessment

In this course, teachers will actively participate in online learning to further develop their understanding of Google Forms, assessment, feedback, and analyzing data. Specific applications will be made to practice, as teachers will create a template to help meet the needs of their students.

Course dates: January 9 - February 5; February 20 - March 19

Cost: \$45 (member) or \$145 (non-member) | Available for 1 graduate credit through ASU

Facilitator: Brittany Osborn (Poudre Education Association)



Standards-Based Grading & Teacher Clarity

In this course, teachers will actively participate in online learning to further develop their understanding of Standards-based grading and John Hattie's *Visible Learning: Theory on Teacher Clarity*. Specific applications will be made to practice, as teachers will identify essential learnings from their academic standards, deconstruct the standards to create a Standards-based proficiency scale (rubric), and create an assessment task. This course is encouraged to be taken with teams, but it is not required.

Course dates: January 9 - February 19

Cost: \$90 (member) or \$190 (non-member) | Available for 2 graduate credits through ASU

Facilitator: Brittany Osborn (Poudre Education Association)



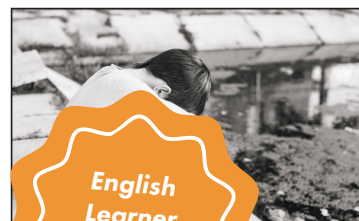
The Playful Classroom: The Power of Play for All Ages

In this class, participants will learn about play in the classroom! You will study the research behind play and how it affects the brain, social skills, increase in productivity and self esteem, decrease in student behaviors and so much more. You will apply lessons from the text and our online activities in your own classrooms as a lab where you get to try all sort of new play-based strategies with students.

Course dates: January 9 - March 5; February 6 - April 12

Cost: \$90 (member) or \$190 (non-member) | Available for 2 graduate credits through ASU

Facilitator: Barb Pedrett (Cherry Creek Education Association)



The Boy Who Raised as a Dog Book Study

We will do a book study on *The Boy Who Was Raised as a Dog* to discuss trauma, how it affects children, and how we as educators can understand this and provide simple ideas to use in our relationships with all kids.

Course dates: January 9 - February 12; February 13 - March 19

Cost: \$45 (member) or \$145 (non-member) | Available for 1 graduate credit through ASU

Facilitator: Jenny Shoen (Littleton Education Association)

All class dates are subject to change based on facilitator availability. All classes are subject to cancellation if fewer than five students enroll by the official class start date.



Autism 101: Overall Information and Strategies to Use in Class

Teachers will actively participate in online learning to further develop their understanding of the Autism Disorder and how it impacts the learning of these students. Specific applications will be made to practice by discussing different strategies to support students in the classroom setting. Throughout the course, we will focus on an overview of the disability, how Autism impacts language/emotions, social interactions, cognitive and sensory needs. This will be through reading sections of the book, *The Complete Guide to Asperger's Syndrome* by Tony Attwood as well as other readings and videos.

Course dates: January 9 - February 12

Cost: \$45 (member) or \$145 (non-member) | Available for 1 graduate credit through ASU

Facilitator: Jenny Shoen (Littleton Education Association)



TRIBES: Cultivating Strong Classroom Community

Educators will actively participate in online learning to further develop their understanding and experience in cultivating a strong classroom community. Participants will additionally build their "toolbox" of engaging classroom community resources and activities. We will read the text, *Reaching All by Creating TRIBES Learning Communities*, and study what it means to create welcoming classrooms where all students thrive.

Course dates: January 9 - March 5

Cost: \$90 (member) or \$190 (non-member) | Available for 2 graduate credits through ASU

Facilitator: Katrina Swanson (Denver Classroom Teachers' Association)



Free Lunch: Reaching Out to Vulnerable Students

This course will be a book study of *Free Lunch*, a novel by young adult author Rex Ogle. In this book, author Ogle chronicles the first semester of his 6th grade year. The book is a memoir of Ogle's first hand accounts, detailing the traumas experienced as a result of growing up in extreme poverty and abuse, book-ended by messages of hope and triumph. By the end of the course, you will have increased understanding and empathy as it relates to serving this population of students!

Course dates: January 9 - February 10

Cost: \$45 (member) or \$45 (non-member) | Available for 1 graduate credit through ASU

Facilitator: William Legg (Poudre Education Association)



Mental Health for Our Students: The Top 5 Struggles Our Students Face Today

Students today are facing such a different set of struggles than we did when we were in school. This course focuses and introduces the five major topics that kids deal with today including (but not limited to) bullying, mental health, suicide, stress, and inequity. In this class we will work to understand and find a set of tools to help our students navigate through this new age with support from us. No books needed, all materials are included.

Course dates: January 9 - February 12; April 3 - May 7

Cost: \$90 (member) or \$190 (non-member) | Available for 2 graduate credits through ASU

Facilitator: Elizabeth Sedalnick (District Twelve Educators' Association)



Time Management for the Educator, Counselor, and Administrator

Can't find the time for a moment to yourself? Feeling pressured and like you need to reset? This class gives you a set of strategies to help you make sure you're taken care of so you can take care of others in your important role in education.

Course dates: January 9 - February 5; March 13 - April 9

Cost: \$90 (member) or \$190 (non-member) | Available for 2 graduate credits through ASU

Facilitator: Elizabeth Sedalnick (District Twelve Educators' Association)

All class dates are subject to change based on facilitator availability. All classes are subject to cancellation if fewer than five students enroll by the official class start date.



Personal Financial Literacy for Colorado Educators: Making the Most of Your PERA Pension, Employer Benefits, and Investments

Being an educator is a very difficult job. It's even more difficult if you're worried about your personal financial situation. Many educators are confused and/or intimidated by finances, and "don't know what they don't know". This stress can't help but impact their job performance. So this class is designed to not only make a difference in your personal lives, but if it can help you relieve that stress, it will make you even better educators and do an even better job of meeting the needs of our students in these challenging times. This class will also help prepare you to better teach the Colorado Academic Standards for K-12 Personal Financial Literacy (PFL). It is also likely that you will learn something that will more than cover the cost of this course!

Course dates: January 13 - March 5; March 17 - May 7

Cost: \$90 (member) or \$190 (non-member) | Available for 3 graduate credits through ASU

Facilitator: Karl Fisch (Colorado Education Association - Retired)



Leaders for Just Schools Level 2

This course is based upon NEA's Leaders for Just Schools program. Teachers will actively participate in online and in-person learning to further develop their understanding of equity and its impact on learning environments. Teachers will ultimately examine ways to evaluate the equity of their own schools and create a plan to improve conditions of equity in their school.

Course dates: January 15 - March 12

Cost: Free (member) or \$190 (non-member) | Available for 2 graduate credits through ASU

Facilitator: Ang Anderson and Rhiannon Wenning (Jefferson County Education Association)



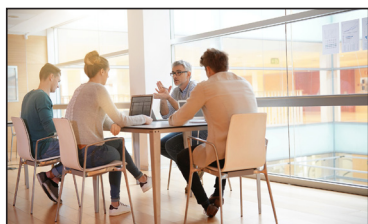
The Leader Within: Who Am I?

Leaders influence. They set the stage for others to flourish and perform to their potential. Being a leader starts with knowing yourself. This requires an understanding of your strengths, weaknesses, values, beliefs, motivations, and desires. In this course, you will discover what motivates you and how you work best. This is the first step in becoming the leader you are capable of being. Once you understand who you are, not who others think you are, you are ready to lead and inspire others to their own greatness. There is a leader inside everyone; it's time to discover it.

Course dates: January 16 - February 19

Cost: \$90 (member) or \$190 (non-member) | Available for 2 graduate credits through ASU

Facilitator: Stacie Albi (District Twelve Educators' Association)



Culturize: Every Student. Every Day. Whatever it Takes.

This course is a book study of Jimmy Casas's latest work *Culturize*. Participants will collaboratively discuss the four core principles Casas introduces and reflect on their own teaching in order to develop an increased positive culture within their school. Included in this book study will be practical application of how to use the concepts that the book introduces.

Course dates: January 16 - February 12

Cost: \$45 (member) or \$145 (non-member) | Available for 1 graduate credit through ASU

Facilitator: Stephanie Fast (Littleton Education Association)

All class dates are subject to change based on facilitator availability. All classes are subject to cancellation if fewer than five students enroll by the official class start date.

Follow and like COpilot on social media!



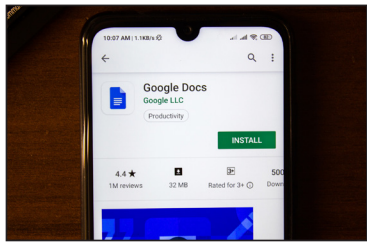
CEA COpilot



@cea_copilot



#cea_copilot



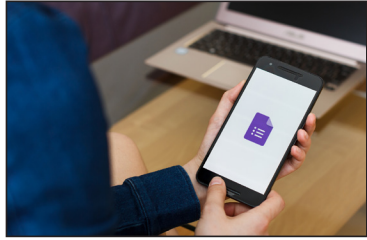
Google Docs Basics

Educators will engage in online learning to initiate and/or continue to develop their basic understanding of Google Docs. The focus will be on skills that will enable teachers to create, distribute, and collaborate with colleagues and students using Google Docs. Educators will learn to utilize all basic features of Google Docs for both professional use and as a workshop model in the Google Classroom with students.

Course dates: January 16 - February 19; February 13 - March 12

Cost: \$45 (member) or \$145 (non-member) | Available for 1 graduate credit through ASU

Facilitator: Elissa Brost (Colorado Springs Education Association)



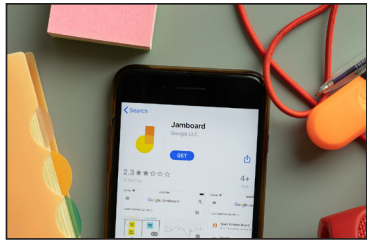
Google Forms Basics

Educators will engage in online learning to initiate and/or continue to develop their basic understanding of Google Forms. The focus will be on skills that will enable teachers to create, distribute, and grade Forms utilized as formative assessments. Educators will investigate integrating curriculum, and other resources into their Forms, polling/survey features, and more. Specific focus will be how to utilize Google Forms in a Google Classroom.

Course dates: January 16 - February 19; February 13 - March 12

Cost: \$45 (member) or \$145 (non-member) | Available for 1 graduate credit through ASU

Facilitator: Elissa Brost (Colorado Springs Education Association)



Google Jamboard Basics

Learners will learn to use and implement the multitude of options for Google Jamboard. Skills will emphasize whiteboard features, collaboration (adult and/or student), and polished and interactive presentations. Learners will collaborate on use in classrooms and with staff, both teacher and student-led uses.

Course dates: January 16 - February 19; February 13 - March 12

Cost: \$45 (member) or \$145 (non-member) | Available for 1 graduate credit through ASU

Facilitator: Elissa Brost (Colorado Springs Education Association)



Google Sheets Basics

Educators will engage in online learning to initiate and/or continue to develop their basic understanding of Google Sheets. The focus will be on skills that will enable teachers to create, distribute, and collaborate with colleagues and students using Google Sheets. Educators will learn to utilize all basic features of Google Sheets for both professional use and as a workshop model in the Google Classroom with students.

Course dates: January 16 - February 19; February 13 - March 12

Cost: \$45 (member) or \$145 (non-member) | Available for 1 graduate credit through ASU

Facilitator: Elissa Brost (Colorado Springs Education Association)



Google Slides Basics

Educators will engage in online learning to initiate and/or continue to develop their basic understanding of Google Slides. The focus will be on skills that will enable teachers to create, distribute, and collaborate with colleagues using Google Slides. Teachers will learn to work beyond standard templates, creating custom presentations to facilitate instruction that utilizes multiple media and presentation choices.

Course dates: January 16 - February 19; February 13 - March 12

Cost: \$45 (member) or \$145 (non-member) | Available for 1 graduate credit through ASU

Facilitator: Elissa Brost (Colorado Springs Education Association)

All class dates are subject to change based on facilitator availability. All classes are subject to cancellation if fewer than five students enroll by the official class start date.



Hacking School Leadership: 10 Ways Great Leaders Inspire Learning that Teachers, Students and Parents Love

There are so many expectations that are being asked of leaders, and it is critical that they focus on building relationships, making connections, developing a mindset of growth, and exploring innovative leadership. By identifying the three components of building staff, being intentional, and opening doors, leaders are provided a framework that will allow them to weave a tapestry of positive culture and success for all.

Course dates: January 16 - February 12; February 13 - March 12

Cost: \$45 (member) or \$145 (non-member) | Available for 1 graduate credit through ASU

Facilitator: Stephanie Fast (Littleton Education Association)



English
Learner
PD Course

Picture Book Trios: Meeting Needs of Diverse Learners with a Cross-Curricular Approach

Do you love teaching with picture books? In this course, you will learn how to choose books in trios centered around a theme, while using primary sources, vocabulary strategies, and geographic skills at the same time. These strategies will help support ELL students, as well as the rest of the class and can be tailored to your needs as diverse classrooms. You will gain the knowledge on how and where to find diverse picture books and other materials for strong content learning.

Course dates: January 16 - February 29; March 13 - April 16

Cost: \$90 (member) or \$190 (non-member) | Available for 2 graduate credits through ASU

Facilitator: Christy Howard (Colorado Springs Education Association)



Workshop for All: Shifting Instruction to Support Student Independence and Rigor

Educating students in the 21st century requires that we prepare them to be critical thinkers, problem solvers, and tenacious learners, persevering when their work is tough. How can we provide our students the time to do these things and teach our content? The Workshop Approach to Instruction! By creating a consistent structure for your lessons, you be able to provide students the opportunity to work through rigorous assignments and activities that meet the demands of the standards.

Course dates: January 16 - February 20

Cost: \$45 (member) or \$145 (non-member) | Available for 1 graduate credit through ASU

Facilitator: Kim McLachlan (District Twelve Educators' Association)



Resilient Educators: What You Can Learn About Yourself in Order to Survive the School Year

Do you want to get through your next school year a bit more smoothly, with confidence, self awareness and emotional resilience? You can learn strategies that will help you get a fresh start before you go back to the classroom! Join me in working through multiple activities from Elena Aguilar's *Onward* workbook.

Course dates: January 16 - February 20

Cost: \$45 (member) or \$145 (non-member) | Available for 1 graduate credit through ASU

Facilitator: Kim McLachlan (District Twelve Educators' Association)



Build a Culture of Feedback

Teacher learners will discover how to cultivate a rich culture of feedback in their classroom and school to improve student and teacher learning and efficacy. Each week will focus on a different element of feedback: foundations, teacher to student, student to student, student to teacher, and educator to educator. Participants will be presented with a variety of instructional techniques that can be directly applied or modified for all grade levels, K-12.

Course dates: January 16 - February 19

Cost: \$90 (member) or \$190 (non-member) | Available for 2 graduate credits through ASU

Facilitator: Anne Sutton (Windsor-Severance Education Association)

Purposeful Play: A Teacher's Guide to Igniting Deep and Joyful Learning Across the Day

Educators will participate in an online book study to further develop their understanding of the importance of play in their classrooms. The authors assert, "Play is one type of environment where children can be rigorous in their learning." Throughout this course, K-5 teachers will learn how to incorporate play and learning into their classrooms. At the end of this course, teachers will understand and be able to incorporate play as its own method of instruction and align it with standards.

Course dates: January 16 - February 12; February 13 - March 12

Cost: \$45 (member) or \$145 (non-member) | Available for 1 graduate credit through ASU

Facilitator: Barb Pedrett (Cherry Creek Education Association)

Executive Functioning Skills in Children and Adolescents

Executive functioning skills describe a person's ability to organize our behavior. Through the use of these skills, we can plan and organize activities, sustain attention, and persist to complete a task. Many students struggle with these skills and require additional support to help develop these skills. This course will look at interventions that can be used in the classroom to support students with the development of these executive functioning skills.

Course dates: January 22 - February 26

Cost: \$90 (member) or \$190 (non-member) | Available for 2 graduate credits through ASU

Facilitator: Lindsay Rider (Brighton Education Association)

Using the Lens of MTSS to Support Students with Fidelity

Educators will actively participate in an online learning to further develop their understanding of Multi-Tiered Systems of Support (MTSS). Specific applications will be made to practice, as teachers will use learned skills of MTSS and develop a plan for a specific student or group of students, a school or district or even a board of education to implement MTSS.

Course dates: January 23 - February 26

Cost: \$45 (member) or \$145 (non-member) | Available for 1 graduate credit through ASU

Facilitator: Erica Adamiak (Cherry Creek Education Association)

Instructional Strategies for English Language Learners in Secondary Education

Educators will actively participate in online learning to enhance their understanding of working with English Language Learners. They will understand how to create differentiated content that will provide the foundation necessary to grow their student's English proficiency along with enhancing their mastery of the curriculum.

Course dates: January 23 - February 26

Cost: \$45 (member) or \$145 (non-member) | Available for 1 graduate credit through ASU

Facilitator: Kevin Gomez (Jefferson County Education Association)

Uncovering the Logic of English

In this book, participant will discover the LOGIC of English. Have you found yourself asking why English words are spelled the way they are? Why is there a silent e in have? Are you looking for ways to improve your phonic instruction? Would you like a new approach to teaching "sight words?" This book will take participants on a discovery of English and how it really is a logical language. Participants will discuss their learning in discussion boards, reflect on the material, apply learning in assignments, and get feedback from the facilitator.

Course dates: January 23 - March 5; March 13 - April 23

Cost: \$90 (member) or \$190 (non-member) | Available for 2 graduate credits through ASU

Facilitator: Jeremiah Moore (Platte Valley Education Association)

All class dates are subject to change based on facilitator availability. All classes are subject to cancellation if fewer than five students enroll by the official class start date.



English
Learner
PD Course



English
Learner
PD Course



English
Learner
PD Course





English
Learner
PD Course

Why Play Works: Big Changes Start Small

Teachers will actively participate in online learning to further develop their understanding of choice time in the classroom grades K-8. Specific applications will be made to practice, as teachers will read and discuss reading assignments and use their classroom as their “lab”. Teachers will apply new play strategies and centers into their classrooms and discuss their findings through online discussions and end of unit slideshow.

Course dates: January 23 - February 19; February 27 - March 26

Cost: \$45 (member) or \$145 (non-member) | Available for 1 graduate credit through ASU

Facilitator: Barb Pedrett (Cherry Creek Education Association)



English
Learner
PD Course

Culturally Responsive Teaching and the Brain

In this book study, students will learn that the achievement gap remains a stubborn problem for educators of culturally and linguistically diverse students. Culturally responsive pedagogy has shown great promise in meeting this need, but many educators still struggle with its implementation. In this book, Zaretta Hammond draws on cutting-edge neuroscience research to offer an innovative approach for designing and implementing brain-compatible culturally responsive instruction.

Course dates: January 23 - February 26; March 6 - April 9

Cost: \$45 (member) or \$145 (non-member) | Available for 1 graduate credit through ASU

Facilitators: Skyler Zody (Aurora Education Association)



English
Learner
PD Course

Comprehension Strategies Using Peardeck

Educators will actively participate in online learning to further develop their understanding of various comprehension strategies to engage specialized populations within the classroom. The application of Peardeck will incorporate comprehension strategies related to the educator’s specific content area to create an engaging and interactive learning environment. Educators will learn how to utilize specific tools within Peardeck to reach students who are ELL, LD, etc.

Course dates: January 29 - February 26; April 2 - April 30

Cost: \$90 (member) or \$190 (non-member) | Available for 2 graduate credits through ASU

Facilitator: Caroline Davis (District Twelve Educators’ Association)



Creating Interactive Virtual Field Trips

In this course, teachers will examine how to effectively plan, design, and create a virtual field trip using ThingLink. You’ll explore the different ways to create interactive, engaging content that students can easily navigate and learn from. By the end of this course, you will have a variety of usable ThingLinks including an interactive virtual field trip that you could use in the remote, hybrid, or flipped classroom setting.

Course dates: January 29 - February 26; April 2 - April 30

Cost: \$90 (member) or \$190 (non-member) | Available for 2 graduate credits through ASU

Facilitator: Caroline Davis (District Twelve Educators’ Association)



Building Community Through Morning Meetings

It is essential for students to feel safe and comfortable in the classroom. Research has been very clear that students have to know they are cared for, they are safe, they matter, etc. A morning meeting is a place to greet each other, share personal news or news about school, create a trusting and caring environment, and a focus on positive behavior. This study of current research and the use of the text, *The Morning Meeting Books: K-8*, by Roxann Kriete & Carol Davis will give educators an immediate application for their classrooms.

Course dates: January 30 - February 26

Cost: \$45 (member) or \$145 (non-member) | Available for 1 graduate credit through ASU

Facilitator: Jeremiah Moore (Platte Valley Education Association)



(Re)design a Lesson with the 4 Shifts Protocol

This course incorporates Dr. Scott McLeod's 4 Shift Protocol and is designed to introduce teachers to practical skills to (re)design lessons focusing on deeper learning, greater student agency, more authentic work, and rich technology infusion. Teachers will learn to recognize the four shifts, evaluate ways to personalize the four shifts, (re)design a lesson, and use the four shifts to permanently pivot to incorporating the shifts into future.

Course dates: January 30 - February 24; March 6 - April 7

Cost: \$45 (member) or \$145 (non-member) | Available for 1 graduate credit through ASU

Facilitator: Robbi Makely (Brighton Education Association)



Mindfulness for Educators

This program is a holistic training for educators and members of the learning community. The sessions and materials help deliver yoga and mindfulness essentials to beginners and experienced practitioners. While participants are always welcome to delve deeper into any of the areas we cover, we aim to deliver a sampling of different styles of yoga and meditation so that students can experience some of the options available to them while creating a long relationship with yoga, meditation, self-care and mindfulness.

Course dates: January 30 - March 12

Cost: \$135 (member) or \$235 (non-member) | Available for 3 graduate credits through ASU

Facilitator: Jan Pratt (Colorado Springs Education Association)



Yoga in the Classroom

Participants will explore ways to bring yoga into the classroom to help students learn to combine breath and movement in a school setting. Yoga provides a great opportunity to learn brain breaks that are movement based while also incorporating balance, breath, coordination and self awareness.

Course dates: January 30 - March 19

Cost: \$135 (member) or \$235 (non-member) | Available for 3 graduate credits through ASU

Facilitator: Jan Pratt (Colorado Springs Education Association)



The Body Keeps the Score: Brain, Mind, Body in the Healing of Trauma

Teachers will explore what trauma is and looks like, how it might present in the population, and how trauma has the ability to reshape the body and brain, compromising the sufferer's capacities for pleasure, engagement, self-control and trust. The book then explores innovative treatment options that can help activate the brain's neuroplasticity.

Course dates: January 30 - March 19

Cost: \$90 (member) or \$190 (non-member) | Available for 2 graduate credits through ASU

Facilitator: Jan Pratt (Colorado Springs Education Association)



Google Level 1 Certification Training

This course is designed to provide educators with the confidence and understanding of how to deliver the Google suite within their classroom and workplace. Educators will engage in a collaborative learning environment with other colleagues examining how using technology in the classroom and work environment can contribute to student achievement.

Course dates: January 30 - March 26

Cost: \$90 (member) or \$190 (non-member) | Available for 2 graduate credits through ASU

Facilitator: Robert Thompson (Colorado Education Association)

All class dates are subject to change based on facilitator availability. All classes are subject to cancellation if fewer than five students enroll by the official class start date.



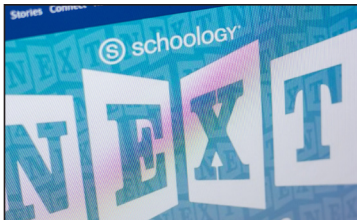
Stress Management for Educators

Do you have stress in your life from work, family, friends, finances, health, technology, etc.? Do you feel burned out with all that you are asked to do? Is your current stress level okay, but you want methods to manage stress in the future? This class will help you learn how stress affects you in the short and long term, identify the stressors in your life, and practice techniques that take less than ten minutes to lower stress and boost the quality of life.

Course dates: February 6 - March 5; April 3 - April 30

Cost: \$90 (member) or \$190 (non-member) | Available for 2 graduate credits through ASU

Facilitator: Catherine Lee (District Twelve Educators' Association)



Advanced Schoology: Take Your Skills to the Next Level

Educators will actively participate in online learning to further develop their Schoology page with a variety of engaging and interactive lessons and web design. By the end of this course, educators will be able to do the following: Create banners and buttons that link to a variety of websites; create interactive lessons using programs such as Edpuzzle or Flipgrid and embed them into the Schoology website; create tutorial videos for students and families about how to navigate your website; create a variety of assessments and activities.

Course dates: February 6 - March 5; April 3 - April 30

Cost: \$90 (member) or \$190 (non-member) | Available for 2 graduate credits through ASU

Facilitator: Catherine Lee (District Twelve Educators' Association)



The School Garden, Nature's Classroom

Having a school garden provides children the opportunity to learn new skills, enjoy the outdoors, and benefit from local, healthy foods. School gardens are an excellent way to engage children outside the classroom whilst teaching them teamwork, responsibility, creativity, and nutrition. When starting a school garden there are many factors to consider, and getting started can feel daunting. This course is for school personnel that are interested in starting a school garden as well as school personnel that have existing school gardens. We will dig into the various factors that promote a healthy sustainable garden including community and school involvement, funding, specific plants that grow well in a school garden, and more. At the end of the course students will be prepared to develop a school garden and/or refine an existing school garden.

Course dates: February 6 - March 20; April 3 - May 7

Cost: \$90 (member) or \$190 (non-member) | Available for 2 graduate credits through ASU

Facilitator: Kase Pooley (Denver Classroom Teachers' Association)



Teaching With Poverty In Mind

Educators will actively participate in this online book study to further develop their understanding and experience in teaching students of poverty. Participants will research what being poor does to kids' brains and what schools and educators can do about it. This course is appropriate for educators of any grade/content level as well as instructional coaches, interventionists, special service providers, and administrators.

Course dates: February 6 - March 5

Cost: \$45 (member) or \$145 (non-member) | Available for 1 graduate credit through ASU

Facilitator: Katrina Swanson (Denver Classroom Teachers' Association)

All class dates are subject to change based on facilitator availability. All classes are subject to cancellation if fewer than five students enroll by the official class start date.

Follow and like COpilot on social media!



CEA COpilot



@cea_copilot



#cea_copilot



Hacking School Discipline: 9 Ways to Create a Culture of Empathy and Responsibility based on Restorative Justice

In this book study, educators will learn 9 ways to create a culture of empathy and responsibility using restorative justice and other techniques. They will learn how to not only change behaviors by replacing traditional school discipline practices that do not work, but transform students into productive citizens, accountable for their own actions.

Course dates: September 12 - October 9

Cost: \$45 (member) or \$145 (non-member) | Available for 1 graduate credit through ASU
Facilitator: Stephanie Fast (Littleton Education Association)



An Introduction to Students with a Hearing Loss

Teachers will actively participate in online learning to further develop their understanding of hearing loss, technology, service providers, and strategies for accessibility in general education classrooms. Specific applications will be made to practice, as teachers will adapt a lesson using the accommodations discussed. All participants will work on a planning template in a discipline of their choice.

Course dates: February 12 - March 18

Cost: \$45 (member) or \$145 (non-member) | Available for 1 graduate credit through ASU
Facilitator: Katy Griebel (Jefferson County Education Association)



Behavior as a Form of Communication 101

This course describes how behavior is a form of communication among students (and adults as well). Participants will learn to focus on form vs. function of behavior, and then address the varieties of functions of behavior and how a teacher can implement consequences (positive and negative) to help shape the behavior in a successful way.

Course dates: February 13 - March 19

Cost: \$45 (member) or \$145 (non-member) | Available for 1 graduate credit through ASU
Facilitator: Jenny Shoen (Littleton Education Association)



Building Relationships with Students

As we have learned during the Pandemic, building relationships with students is a key piece of what we do as educators. Without relationships, we will be unable to accomplish anything else with students. In this course, we take a look at what, why, and how to build relationships with our students. This is appropriate for all educators at all levels including but not limited to teachers, counselors, administrators, and licensed staff. This is a self paced course and all materials are included.

Course dates: February 13 - March 12

Cost: \$90 (member) or \$190 (non-member) | Available for 2 graduate credits through ASU
Facilitator: Elizabeth Sedalnick (District Twelve Educators' Association)



Transgender and Gender Expansive Youth

This course is designed to help professionals in education better understand transgender and nonconforming youth, as well as how to support this vulnerable population. As our world evolves and changes, it behooves us to stay up with the current changes to understand, work with and support all students. Teachers will actively participate in online learning to further develop their understanding of the language used, needs of our student population, how to support transgender and nonconforming youth in our schools, and the law.

Course dates: February 13 - March 12; April 10 - May 7

Cost: \$90 (member) or \$190 (non-member) | Available for 2 graduate credits through ASU
Facilitator: Elizabeth Sedalnick (District Twelve Educators' Association)

All class dates are subject to change based on facilitator availability. All classes are subject to cancellation if fewer than five students enroll by the official class start date.



English Learner PD Course

Teaching English Language Learners Across Content Areas

Have you ever wondered if all of your students are truly “getting it?” Do you want to enhance your lessons to engage all learners while at the same time enhancing instruction for your English Language Learners? In this class, teachers will engage in readings by Judie Haynes and Debbie Zacarian in order to learn to enhance their classroom and school environment and improve student academic language and literacy learning in language arts, math, science, and social studies, so that they can ensure all students are getting what they need to be successful in the classroom.

Course dates: February 19 - March 26

Cost: \$45 (member) or \$145 (non-member) | Available for 1 graduate credit through ASU

Facilitator: Lindsay Rider (Brighton Education Association)



Dump Your File Cabinet: Tips and Tricks to Creating a Digital File Cabinet Using Google Drive

Are you fed up with the large file cabinet in your classroom? Are you sick of working from home and never having the document you need because it is in your classroom? Well this is the class for you. In this course you will learn how to use Google drive to organize and store all of your classroom files. This course begins with an introduction into Google drive where you will learn to create folders and organize your drive. Then you will learn easy ways to export your digital and paper documents into your Google Folders. Finally, you will use those digital files to create a BitMoji classroom where students can have access to all of their classroom materials in a digital way.

Course dates: February 20 - March 19

Cost: \$45 (member) or \$145 (non-member) | Available for 1 graduate credit through ASU

Facilitator: Nicole Hargreaves (Cherry Creek Education Association)



Going Deeper with Standards-based Grading

In this course, teachers will actively participate in online learning to further develop their understanding of Standards-based grading. Teachers will continue the work of unpacking their identified essential standards to create proficiency scales (rubrics) and assessment tasks. Discussions will continue around standards-based grading in the classroom, communication, data analysis, and work habits. This course is encouraged to be taken with teams, but it is not required.

Course dates: February 20 - April 2

Cost: \$90 (member) or \$190 (non-member) | Available for 2 graduate credits through ASU

Facilitator: Brittany Osborn (Poudre Education Association)



Gifted and Talented: A Primer for Student Success

In *Gifted and Talented: A Primer for Student Success*, educator learners will explore the characteristics, challenges, and best practices of engaging gifted and talented students in the classroom. By understanding the unique qualities of GT students, educators will be better equipped to handle the challenges faced by students, parents, and educators as they foster growth within the child, thereby inspiring the joy of continued learning.

Course dates: February 20 - March 26

Cost: \$45 (member) or \$145 (non-member) | Available for 1 graduate credit through ASU

Facilitator: Anne Sutton (Windsor-Severance Education Association)



Leaders for Just Schools

This course is based upon NEA's Leaders for Just Schools program. Teachers will actively participate in online and in-person learning to further develop their understanding of equity and its impact on learning environments. Teachers will ultimately examine ways to evaluate the equity of their own schools and create a plan to improve conditions of equity in their school.

Course dates: February 26 - April 2

Cost: Free (member) or \$190 (non-member) | Available for 2 graduate credits through ASU

Facilitator: Ang Anderson and Rhiannon Wenning (Jefferson County Education Association)



Rising Strong: How the Ability to Reset Transforms the Way We Live, Love, Parent, and Lead

As educators we are constantly interacting with other people and are in situations that may not always go the way we expected. It is how we react to these people and the situations that make our path either clear or muddy. In this book study we will study how to use Brene Brown's "Rising Strong Process" in our daily lives which includes: The Reckoning: walking into our story, The Rumble: owning our story, and The Revolution: writing a new ending and changing how we engage with the world.

Course dates: February 27 - April 3

Cost: \$45 (member) or \$145 (non-member) | Available for 1 graduate credit through ASU
Facilitator: Kim McLachlan (District Twelve Educators' Association)



Thriving Educators: Daily Activities to Cultivate Your Emotional Resilience

Do you want to get through your next school year a bit more smoothly, with confidence, self awareness and emotional resilience? You can learn strategies that will help you get a fresh start before you go back to the classroom! Join me in working through multiple activities from Elena Aguilar's Onward workbook. Let's gather some tools to take care of ourselves as well as our students! This book study will focus on the 2nd half of The Onward Workbook. You do not need to take the Survival section first as there is no required order.

Course dates: February 27 - April 3

Cost: \$45 (member) or \$145 (non-member) | Available for 1 graduate credit through ASU
Facilitator: Kim McLachlan (District Twelve Educators' Association)



6 Ways to Bring the Science of Reading Into Your Classroom

This book study of *Shifting the Balance: 6 Ways to Bring the Science of Reading into the Balanced Literacy Classroom* will give you actionable ways to enhance your current reading instruction. Reading topics that will be covered include comprehension, phonemic awareness, phonics, high-frequency words, cueing system, and texts for beginning readers. The class will give you a menu of options to show your learning. Through discussions and assignments, you will apply your learning into your classroom immediately.

Course dates: February 27 - April 2

Cost: \$45 (member) or \$145 (non-member) | Available for 1 graduate credit through ASU
Facilitator: Jeremiah Moore (Platte Valley Education Association)



Daily STEM

In this book study teachers will learn how to create STEM culture in their classroom and communities. Teachers will explore what a sustainable STEM culture looks like and be challenged to think beyond 3D printers and expensive robots. What does it look like to make STEM relevant to every kid and infuse it into every classroom? This course will help teachers to locate STEM connections in the everyday.

Course dates: February 27 - April 2

Cost: \$45 (member) or \$145 (non-member) | Available for 1 graduate credit through ASU
Facilitator: Sarah Pomeroy (Summit County Education Association)



Teach Like A Pirate: Increase Student Engagement, Boost Your Creativity, and Transform Your Life As an Educator

Educators will actively participate in this online book study to tap into their passion as a teacher - even when you're less than excited about the subject. Participants will transform their class into a life-changing experience for their students while establishing rapport and a sense of camaraderie. This course is appropriate for educators of any grade/content level as well as instructional coaches, interventionists, special service providers and administrators.

Course dates: February 27 - April 9

Cost: \$90 (member) or \$190 (non-member) | Available for 2 graduate credits through ASU
Facilitator: Katrina Swanson (Denver Classroom Teachers' Association)



A Little Guide for Teachers: Supporting Behavior in the Classroom

The book, *A Little Guide for Teachers: Supporting Behavior in the Classroom*, will help guide our thinking and learning. We will explore topics such as different definitions of behavior, flexibility, structure, and managing the mood of the classroom. Throughout this course we will reflect on our own teaching, challenge ideas, and learn new tips and tricks to help support behavior within your role.

Course dates: March 6 - April 2; April 3 - April 30

Cost: \$45 (member) or \$145 (non-member) | Available for 1 graduate credit through ASU

Facilitator: Kyleene Pedrett (Cherry Creek Education Association)



A Little Guide for Teachers: Diversity in Schools

The book, *A Little Guide for Teachers: Diversity in Schools*, will help guide our thinking and learning. We will explore topics such as the importance of being knowledgeable on histories, trends, and controversies in the language of diversity. As well as creating culturally connected spaces, catering for all voices, modeling respect for diversity in schools, having belonging through curriculum, creating global citizens, and influencing positive change.

Course dates: March 6 - April 2; April 3 - April 30

Cost: \$45 (member) or \$145 (non-member) | Available for 1 graduate credit through ASU

Facilitator: Kyleene Pedrett (Cherry Creek Education Association)



Teacher Wellbeing and Self-Care

With teacher burnout at an all time high, what are you doing to take care of yourself so that you can be your best for you, your family, friends, and students? In this course we are going to dive deep into how to take care of ourselves, find meaning in teaching, and feeling like our efforts are worth it. The book, *A Little Guide for Teachers: Teacher Wellbeing and Self-care*, will help guide our thinking and learning. We will explore topics such as keeping your values and moral purpose at the forefront of your professional role, maintaining a sense of perspective, and managing your workload effectively and efficiently. We will also learn about handling stress, fostering peer relationships, and promoting agency within your role.

Course dates: March 6 - April 2; April 3 - April 30

Cost: \$45 (member) or \$145 (non-member) | Available for 1 graduate credit through ASU

Facilitator: Kyleene Pedrett (Cherry Creek Education Association)



Overcoming Dyslexia

Participants will gain knowledge that provides the foundation for the latest science-based diagnosis of dyslexia and effective interventions for reading difficulties. The course will go in depth how skilled reading develops and when to expect the successive milestones. Participants will also learn how to recognize the specific clues that should alert them that reading is not progressing smoothly. This course will provide both educators who work with struggling readers of all ages with practical resources on helping them become better readers.

Course dates: March 13 - May 7

Cost: \$90 (member) or \$190 (non-member) | Available for 2 graduate credits through ASU

Facilitator: Larisa Baskin (Aurora Education Association)



Permission to Feel: Unlocking the Power of Emotion to Help Our Kids, Our Society and Ourselves Thrive

This course is a book study on Marc Brackett's best selling book, *Permission to Feel*. Based on research from the Yale Center for Emotional Intelligence, this course will focus on practical and research based five keys to emotional intelligence and how those impact education and learning. Educators will learn his technique known as "Ruler Training" and transform their emotional literacy.

Course dates: March 13 - April 9

Cost: \$45 (member) or \$145 (non-member) | Available for 1 graduate credit through ASU

Facilitator: Stephanie Fast (Littleton Education Association)



How to Address Bullying - A Proactive Approach

Preventing bullying and creating a safe environment for our students is a top priority at all levels. This course will define bullying and the different types, explore creating a safe environment, work on assessing bullying, and help us to help students to stop bullying whether they or someone they know are experiencing bullying.

Course dates: March 13 - April 9

Cost: \$90 (member) or \$190 (non-member) | Available for 2 graduate credits through ASU

Facilitator: Elizabeth Sedalnick (District Twelve Educators' Association)



Strategies that Engage: Moving Beyond the Stereotypes of Poverty

This course will provide an opportunity to explore core strategies for engagement that lead to academic success for learners. Participants will explore seven factors that establish purposeful learning routines to increase motivation and empower students to take ownership of learning. Enrolled educators will implement new strategies and create an immediate plan for their classroom that enriches learning and revitalizes the school day.

Course dates: March 20 - April 9; April 10 - April 30

Cost: \$45 (member) or \$145 (non-member) | Available for 1 graduate credit through ASU

Facilitator: Amy Bohan (Westminster Education Association)



The ELL Teacher's Toolbox

This practical, valuable resource provides hundreds of innovative and research-based instructional strategies that you can use to support all levels of English Language Learners in your classroom. We will use the text as a guide to explore new ways to support our ELL students, dive deeply into each of the 4 language domains: Reading, Writing, Speaking, and Listening, and discover new ways to provide important intervention for students in each of these domains. This resource will become one of your most used items in your professional library.

Course dates: March 26 - April 30

Cost: \$90 (member) or \$190 (non-member) | Available for 2 graduate credits through ASU

Facilitator: Lindsay Rider (Brighton Education Association)



Modeling the Way: A Deep Dive Into Your Own SEL Skills

Social emotional learning is shown to be foundational when setting the stage for academic learning. SEL leads to stronger relationships, a sense of belonging, and a more supportive learning environment. As educators, social emotional skills can also have a positive impact on our own personal and professional success. In order to effectively teach SEL, we should reflect on our own skills, acknowledge where we're at, and continue to expand these practices. Doing this allows us to best model and teach those skills to our students. This course will look at CASEL's five core competencies.

Course dates: March 27 - April 30

Cost: \$90 (member) or \$190 (non-member) | Available for 2 graduate credits through ASU

Facilitator: Stacie Albi (District Twelve Educators' Association)



Routines for Success in the Classroom and in Life

The book study will engage participants in reflection, planning and implementation of transformative practices that will lead to more purposeful and engaged classrooms and professional learning teams. Participants will collaboratively discuss strategies and techniques for effectively engaging students within the school culture through self-reflection and character building.

Course dates: March 27 - April 16

Cost: \$45 (member) or \$145 (non-member) | Available for 1 graduate credit through ASU

Facilitator: Amy Bohan (Westminster Education Association)



Advanced Google Tools: Harnessing the Power of Google Level II Certification

This course is designed to build and expand upon the learning offered in the Google Level I course. There are 11 modules for the learner to engage in at their own pace. Once the modules are complete, you will be able to prove your knowledge of the Google platform and join the ranks of Google Level II Educators around the world. The Level 2 Educator badge can be added to your resume, website, school credential, or other professional network. Through this model, educators will engage in a collaborative learning environment with other colleagues examining how using technology in the classroom and for a collaborative work environment can contribute to student achievement. Participants will depart from old systems of thinking to expand upon the foundational structures of the Google for Education framework and consider even further options of a blended learning model. This course is offered to anyone who has already taken the Google Level I training or certification or anyone interested in honing their skills in this additional offering of the Google Suite workshop.

Course dates: March 27 - May 7

Cost: \$90 (member) or \$190 (non-member) | Available for 2 graduate credits through ASU

Facilitator: Robert Thompson (Colorado Education Association)



Number Sense Routines

Deep understanding of number sense is the foundation for developing math skills in young learners. The daily use of 5 to 15 minute exercises will help students build number sense. Participants in this book study will learn how easily number sense can be developed and about ways how to implement responsive number sense routines no matter what curriculum materials teachers use.

Course dates: April 3 - April 30

Cost: \$45 (member) or \$145 (non-member) | Available for 1 graduate credit through ASU

Facilitator: Larisa Baskin (Aurora Education Association)



Personalizing Learning to Keep Students at the Center

In this *Students at the Center* book study, educator learners will be introduced to the basic tenets of personalized learning and how it can positively impact student success. Through the course text, educators will also engage with skills essential to student growth and development through the 16 Habits of Mind first created by Arthur L. Costa and Bena Kallick.

Course dates: April 3 - May 7

Cost: \$45 (member) or \$145 (non-member) | Available for 1 graduate credit through ASU

Facilitator: Anne Sutton (Windsor-Severance Education Association)



Positive Mindset Habits for Teachers: 10 Ways to Reduce Stress, Increase Engagement and Reignite your Passion for Teaching

In this book study, educators will learn 10 strategies that increase their happiness, reduce their stress and enhance their passion in the classroom. The course will focus on how educational professionals can use growth mindset to use practical and tangible ways to improve their craft and bring more joy into their lives and classrooms.

Course dates: April 10 - May 7

Cost: \$45 (member) or \$145 (non-member) | Available for 1 graduate credit through ASU

Facilitator: Stephanie Fast (Littleton Education Association)



Colorado Professional Institute for Learning Online Together

www.ceacopilot.org