

ceacopilot

Colorado Professional Institute for Learning Online Together



www.ceacopilot.org

Spring 2024 Courses



A bit about COpilot

Colorado teachers and education support professionals are deeply committed to every student's success. We want all students to achieve their full potential as individuals and become productive citizens who make positive contributions to society.

We believe that educators provide the stable, nurturing, inspiring environment that makes it possible to teach each student and provide individual attention to each student's learning needs. To this end, we work to ensure that every student has a qualified, caring educator.

We believe that we must change the way educators are recruited, trained, evaluated, supported, and held accountable. We believe we must raise the bar for what it means to be a quality educator by focusing on preparing new educators for the classroom, attracting and retaining educators, providing continuous, high quality professional development for all educators, and promoting effective teachers and quality educators.

We believe that COpilot is one key to achieving these core areas of professional excellence. Through expanding your learning opportunities, you will ensure that all students in Colorado public schools have the benefit of qualified, caring, committed educators throughout their school years.

For more information or if you have questions, please contact us at ceacopilot@coloradoea.org!

Frequently Asked Questions (FAQs):

How do I sign up for a COpilot account?

To create a COpilot account, visit www.ceacopilot.org, click Log In and either verify your Association membership or create a guest account. This easy process doesn't take more than 30 seconds!

How much time does a class take?

Most COpilot classes are 15 instructional hours spread over five or six weeks. Students should expect to spend about three hours per week doing class activities.

Can I earn credit, clock hours, and a certificate?

The answer is a resounding "Yes!" Nearly all of the classes on COpilot qualify for graduate credit from Adams State University. All of the classes are eligible for license renewal hours through the Colorado Department of Education. At the conclusion of each class, you will receive a certificate of completion for your records.

Can I get the syllabus for the class before making a decision?

Absolutely! Just email the Director of Learning Services, Casey Kilpatrick (ckilpatrick@coloradoea.org), for that information.

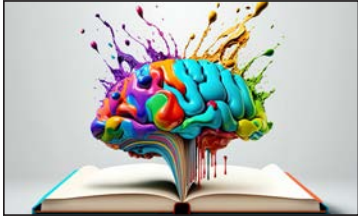
Can my district use COpilot for its professional development?

CEA has worked hard to make sure districts in partnership with the local association can use COpilot to run all of their professional development. We do not charge districts to use the platform. Instead, our requirement is that the district and local association reach an agreement that dictates the school district will pay members who facilitate the classes a fair stipend. For more information about this kind of opportunity, please contact Casey Kilpatrick at CEA (ckilpatrick@coloradoea.org).

How are classes structured?

All of our classes are fully facilitated, which means you'll have a trained CEA member leading you and teachers from across Colorado through the content. Our classes are time-bound so that the facilitation makes sense. Through using this mostly synchronous method, teachers can more easily collaborate with each other, share experiences, and receive coaching as they practice strategies in their classrooms.

Spring 2024 Class List



Brain Development & the Impact of Trauma

Course participants will actively participate online to learn about typical brain development. Through the coursework, participants will then begin to learn about trauma and the impact it has on brain development with a specific focus on learning. Connections to the classroom will also be offered to help participants reflect on their practice and think of how they can implement trauma-informed practices within their work environment for student success.

Course dates: January 8 - February 18

Cost: \$90 (member) or \$190 (non-member) | Available for 2 graduate credits through ASU

Facilitator: Heather Jung (Denver Classroom Teachers' Association)



Leaders for Just Schools

This course is based upon NEA's Leaders for Just Schools program. Teachers will actively participate in online and in-person learning to further develop their understanding of equity and its impact on learning environments. Teachers will ultimately examine ways to evaluate the equity of their own schools and create a plan to improve conditions of equity in their school.

Course dates: January 8 - March 10

Cost: Free (member) or \$190 (non-member) | Available for 2 graduate credits through ASU

Facilitator: Ang Anderson (Jefferson County Education Association)



Enhancing School Safety Through "The Gift of Fear"

In a world where ensuring the safety and well-being of students and staff in educational institutions is of greatest importance, this course utilizes the insights and principles from Gavin de Becker's book, "The Gift of Fear." Participants will be better equipped to create a safer, more secure, and more nurturing school environment, helping to ensure that students and staff can focus on learning and personal growth with confidence and peace of mind. The course is designed to assist educators, administrators, security and school personnel with a comprehensive understanding of the psychology of personal safety.

Course dates: January 8 - March 4; March 25 - May 5

Cost: \$135 (member) or \$235 (non-member) | Available for 3 graduate credits through ASU

Facilitator: Katie Guerrero (District Twelve Educators' Association)



The Scaffold Effect in Education

Teachers will actively participate in online learning to further develop their understanding of the scaffold effect that is necessary to build strong relationships with children and teens as well as resilient young adults. This course will provide instructional strategies and curriculum guidance to help grow confidence in children and combat the "Age of Anxiety" we are seeing in our schools today. The course will help participants to utilize clinically proven practices to assist our youth in building a strong foundation for mental health and healthy coping strategies.

Course dates: January 8 - February 19; March 4 - April 22

Cost: \$135 (member) or \$235 (non-member) | Available for 3 graduate credits through ASU

Facilitator: Katie Guerrero (District Twelve Educators' Association)



Branching Google Forms for Formative Assessment

In this course, teachers will actively participate in online learning to further develop their understanding of Google Forms, assessment, feedback, and analyzing data. Specific applications will be made to practice, as teachers will create a template to help meet the needs of their students.

Course dates: January 8 - February 4

Cost: \$45 (member) or \$145 (non-member) | Available for 1 graduate credit through ASU

Facilitator: Brittany Osborn (Poudre Education Association)



Advanced Google Sheets

In this course, teachers will actively participate in online learning to provide educators with advanced skills in Google Sheets to differentiate learning, analyze assessment data, enhance student/teacher communication with ELD and IS support, planning, and more. Participants will learn how to use coding, formulas, and Sheets' features to create powerful data tools and automate repetitive tasks. Participants will also explore strategies for effective data analysis and communication with students, parents, and colleagues.

Course dates: January 8 - February 11

Cost: \$90 (member) or \$190 (non-member) | Available for 2 graduate credits through ASU

Facilitator: Brittany Osborn (Poudre Education Association)



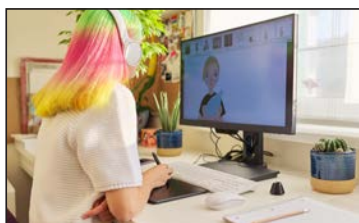
Building Thinking Classrooms in Mathematics

In this 8-week book study course we will be discovering the magic of "Building Thinking Classrooms in Mathematics, Grades K-12" by Peter Liljedahl. Participants will explore the 14 teaching practices aimed at fostering a thinking-centered approach to mathematics instruction. Through reading, reflection, discussions, and assignments, participants will gain insights and practical strategies to enhance their teaching practices and create a classroom environment that promotes student engagement, problem-solving skills, and mathematical thinking.

Course dates: January 8 - March 3

Cost: \$135 (member) or \$235 (non-member) | Available for 3 graduate credits through ASU

Facilitator: Brittany Osborn (Poudre Education Association)



Canva in the Classroom

In this course, teachers will actively participate in online learning to explore how to use Canva for Education, a powerful graphic design and interactive collaborative platform, to enhance your classroom teaching and planning. Throughout the course, participants will first explore what Canva offers, how it works and then learn how to create visually appealing classroom materials, such as posters, flyers, handouts, and presentations. We will explore how to establish a classroom to keep your students' participation and collaboration in one place as well as integrating it into your current Learning Management System.

Course dates: January 8 - March 3; March 11 - May 5

Cost: \$135 (member) or \$235 (non-member) | Available for 3 graduate credits through ASU

Facilitator: Brittany Osborn (Poudre Education Association)



English
Learner
PD Course

Standards-Based Grading & Teacher Clarity

In this course, teachers will actively participate in online learning to further develop their understanding of Standards-based grading and John Hattie's *Visible Learning: Theory on Teacher Clarity*. Specific applications will be made to practice, as teachers will identify essential learnings from their academic standards, deconstruct the standards to create a Standards-based proficiency scale (rubric), and create an assessment task.

Course dates: January 8 - February 18

Cost: \$90 (member) or \$190 (non-member) | Available for 2 graduate credits through ASU

Facilitator: Brittany Osborn (Poudre Education Association)



Digital Tools for Promoting Creativity

Stressed out about how to get your students to think outside the box in this new online learning environment? In this course, teachers will learn how to utilize free online tools to promote creativity in your classes- no matter what subject you teach. Tools include: Pinterest, Canva, Instagram/Twitter, and Google Sites. Teachers will learn the basics about each of these tools, and submit an example how they could use them in a lesson as either a research, presentation, or as a summative evaluation tool. This course is designed to help you create fresh assignments that help further develop students as 21st Century creative thinkers and problem solvers.

Course dates: January 8 - February 18; March 11 - April 15

Cost: \$90 (member) or \$190 (non-member) | Available for 2 graduate credits through ASU

Facilitator: Hannah Dominguez (Poudre Education Association)



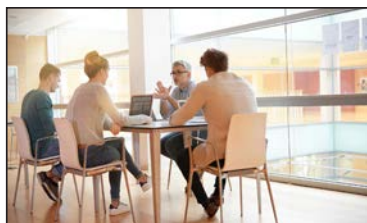
The Arts and Social-Emotional Learning

This course is designed to push you creatively and help you make connections towards fully understanding and utilizing Social and Emotional Learning targets. Each Module will require you to create a work of art using various materials and explore how your artwork relates to SEL. By the end of the course, you will have a portfolio of work, and will be able to write your own SEL influenced lesson for ANY SUBJECT!! No Art Experience Required!! You only need a desire to create!

Course dates: January 8 - March 3; March 11 - May 5

Cost: \$135(member) or \$235(non-member) | Available for 3 graduate credits through ASU

Facilitator: Hannah Dominguez (Poudre Education Association)



Culturize: Every Student. Every Day. Whatever it Takes.

This course is a book study of Jimmy Casas's latest work, *Culturize*. Participants will collaboratively discuss the four core principles Casas introduces and reflect on their own teaching in order to develop an increased positive culture within their school. Included in this book study will be practical application of how to use the concepts that the book introduces.

Course dates: January 8 - February 4

Cost: \$45 (member) or \$145 (non-member) | Available for 1 graduate credit through ASU

Facilitator: Stephanie Fast (Littleton Education Association)



Set Boundaries, Find Peace

Feeling burnt out, unappreciated, overwhelmed? Setting boundaries is an essential skill for maintaining healthy relationships and promoting personal well-being. In this course based on the book "Set Boundaries, Find Peace" by Nedra Glover Tawwab you will learn how to establish and maintain healthy boundaries in your personal and professional environments to improve the quality of your life.

Course dates: January 8 - February 11; February 26 - March 31

Cost: \$135(member) or \$235(non-member) | Available for 3 graduate credits through ASU

Facilitator: Larisa Baskin (Aurora Education Association)



Build a Culture of Feedback

Teacher learners will discover how to cultivate a rich culture of feedback in their classroom and school to improve student and teacher learning and efficacy. Each week will focus on a different element of feedback: foundations, teacher to student, student to student, student to teacher, and educator to educator. Participants will be presented with a variety of instructional techniques that can be directly applied or modified for all grade levels, K-12.

Course dates: January 8 - February 11

Cost: \$90 (member) or \$190 (non-member) | Available for 2 graduate credits through ASU

Facilitator: Anne Sutton (Windsor-Severance Education Association)



English
Learner
PD Course

Sold a Story: How the Three Cueing System has Failed Readers

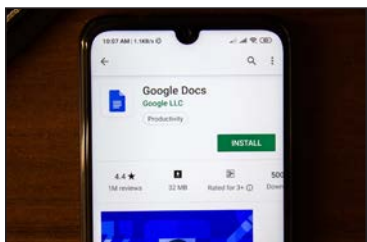
Throughout this course, students will listen to six episodes of a Podcast called, "Sold a Story" by journalist Emily Hanford. She brings in multiple interviews from parents, educators, students and even Lucy Calkins, "the reading guru", to help us better understand the why behind the sudden urgency to change how we teach reading. Teachers will also read a variety of texts to help support the sudden shift and the science behind how this was a flawed system. Through the episodes and articles, teachers will participate in discussions, journal responses, and create a final product to give to leadership and staff within their buildings.

Course dates: January 8 - February 11

Cost: \$45 (member) or \$145 (non-member) | Available for 1 graduate credit through ASU

Facilitator: Danielle Vinton (District Twelve Educators' Association)

All class dates are subject to change based on facilitator availability. All classes are subject to cancellation if fewer than five students enroll by the official class start date.



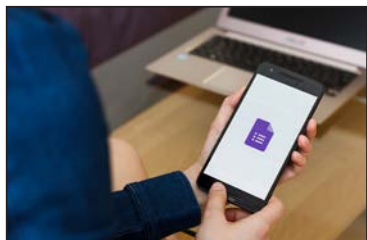
Google Docs Basics

Educators will engage in online learning to initiate and/or continue to develop their basic understanding of Google Docs. The focus will be on skills that will enable teachers to create, distribute, and collaborate with colleagues and students using Google Docs. Educators will learn to utilize all basic features of Google Docs for both professional use and as a workshop model in the Google Classroom with students.

Course dates: January 8 - February 4

Cost: \$45 (member) or \$145 (non-member) | Available for 1 graduate credit through ASU

Facilitator: Elissa Brost (Colorado Springs Education Association)



Google Forms Basics

Educators will engage in online learning to initiate and/or continue to develop their basic understanding of Google Forms. The focus will be on skills that will enable teachers to create, distribute, and grade Forms utilized as formative assessments. Educators will investigate integrating curriculum, and other resources into their Forms, polling/survey features, and more. Specific focus will be how to utilize Google Forms in a Google Classroom.

Course dates: January 8 - February 4

Cost: \$45 (member) or \$145 (non-member) | Available for 1 graduate credit through ASU

Facilitator: Elissa Brost (Colorado Springs Education Association)



Google Sheets Basics

Educators will engage in online learning to initiate and/or continue to develop their basic understanding of Google Sheets. The focus will be on skills that will enable teachers to create, distribute, and collaborate with colleagues and students using Google Sheets. Educators will learn to utilize all basic features of Google Sheets for both professional use and as a workshop model in the Google Classroom with students.

Course dates: January 8 - February 4

Cost: \$45 (member) or \$145 (non-member) | Available for 1 graduate credit through ASU

Facilitator: Elissa Brost (Colorado Springs Education Association)



Google Sites Basics

Teachers will engage in online learning to initiate and/or continue to develop their basic understanding of Google Sites. The focus will be on skills that will enable teachers to create and distribute a Google Site. Teachers will plan, organize, create, enhance, and modify a Google Site as a classroom resource to inform and communicate with students/families/staff.

Course dates: January 8 - February 4

Cost: \$45 (member) or \$145 (non-member) | Available for 1 graduate credit through ASU

Facilitator: Elissa Brost (Colorado Springs Education Association)



Google Slides Basics

Educators will engage in online learning to initiate and/or continue to develop their basic understanding of Google Slides. The focus will be on skills that will enable teachers to create, distribute, and collaborate with colleagues using Google Slides. Teachers will learn to work beyond standard templates, creating custom presentations to facilitate instruction that utilizes multiple media and presentation choices.

Course dates: January 8 - February 4

Cost: \$45 (member) or \$145 (non-member) | Available for 1 graduate credit through ASU

Facilitator: Elissa Brost (Colorado Springs Education Association)

All class dates are subject to change based on facilitator availability. All classes are subject to cancellation if fewer than five students enroll by the official class start date.



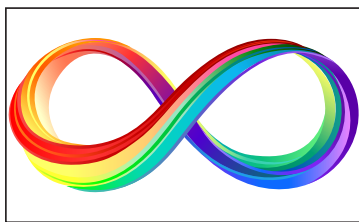
The Book Whisperer: Awakening the Inner Reader in Every Child

This course will be a book study of Donalyn Miller's book *The Book Whisperer: Awakening the Inner Reader in Every Child*. Participants will discuss and make plans of implementation to engage a classroom of readers. Participants will also walk away with easily-applicable resources to use and/ or modify in their classroom.

Course dates: January 8 - February 4; April 1 - April 28

Cost: \$45 (member) or \$145 (non-member) | Available for 1 graduate credit through ASU

Facilitator: Elissa Brost (Colorado Springs Education Association)



I Will Die on This Hill: Autistic Adults, Autism Parents, and the Children Who Deserve a Better World

In this book study, educators will learn about the different perspectives surrounding autism spectrum disorder coming from Actually Autistic adults and parents of autistic children. Participants will gain an understanding of the impacts of the diagnosis, what supports are needed in and out of the classroom, and how to make our world a more accessible place for all. This course is appropriate for any grade level and content area, instructional coaches, special service providers, counselors and mental health teams, and administrators. Throughout this course, we will focus on understanding these concepts using the text *I Will Die on This Hill: Autistic Adults, Autism Parents, and the Children Who Deserve a Better World*, videos, podcasts, and additional readings.

Course dates: January 8 - February 18

Cost: \$90 (member) or \$190 (non-member) | Available for 2 graduate credits through ASU

Facilitator: Monica Beckner (Greeley Education Association)



Stress Management for Educators

Do you have stress in your life from work, family, friends, finances, health, technology, etc.? Do you feel burned out with all that you are asked to do? Is your current stress level okay, but you want methods to manage stress in the future? This class will help you learn how stress affects you in the short and long term, identify the stressors in your life, and practice techniques that take less than ten minutes to lower stress and boost the quality of life.

Course dates: January 8 - February 4; February 5 - March 3

Cost: \$90 (member) or \$190 (non-member) | Available for 2 graduate credits through ASU

Facilitator: Catherine Lee (District Twelve Educators' Association)



Anger Management for Educators

Anger is a normal emotion that everyone feels from time to time. This class, with the aid of *The Cognitive Behavioral Workbook for Anger: A Step-By-Step Program for Success*, will help you to use a variety of tools, exercises, and self-mastery methods to overcome destructive anger. You will be able to recognize and overcome anger triggers, extinguish anger in the heat of the moment, stop the cycle of blame, tolerate negative emotions, deal with difficult people, and repair broken relationships.

Course dates: January 8 - February 18; February 19 - March 31

Cost: \$135 (member) or \$235 (non-member) | Available for 3 graduate credits from ASU

Facilitator: Catherine Lee (District Twelve Educators' Association)



The Playful Classroom: The Power of Play for All Ages

In this class, participants will learn about play in the classroom! You will study the research behind play and how it affects the brain, social skills, increase in productivity and self esteem, decrease in student behaviors and so much more. You will apply lessons from the text and our online activities in your own classrooms as a lab where you get to try all sort of new play-based strategies with students.

Course dates: January 8 - March 3

Cost: \$90 (member) or \$190 (non-member) | Available for 2 graduate credits through ASU

Facilitator: Barb Pedrett (Cherry Creek Education Association)



The Leader Within: Who Am I?

Leaders influence. They set the stage for others to flourish and perform to their potential. Being a leader starts with knowing yourself. This requires an understanding of your strengths, weaknesses, values, beliefs, motivations, and desires. In this course, you will discover what motivates you and how you work best. This is the first step in becoming the leader you are capable of being. Once you understand who you are, not who others think you are, you are ready to lead and inspire others to their own greatness. There is a leader inside everyone; it's time to discover it.

Course dates: January 8 - February 11

Cost: \$90 (member) or \$190 (non-member) | Available for 2 graduate credits through ASU

Facilitator: Stacie Albi (District Twelve Educators' Association)



Modeling the Way: A Deep Dive Into Your Own SEL Skills

Social emotional learning is shown to be foundational when setting the stage for academic learning. SEL leads to stronger relationships, a sense of belonging, and a more supportive learning environment. As educators, social emotional skills can also have a positive impact on our own personal and professional success. In order to effectively teach SEL, we should reflect on our own skills, acknowledge where we're at, and continue to expand these practices. Doing this allows us to best model and teach those skills to our students. This course will look at CASEL's five core competencies.

Course dates: January 8 - February 11; February 26 - March 31

Cost: \$90 (member) or \$190 (non-member) | Available for 2 graduate credits through ASU

Facilitator: Stacie Albi (District Twelve Educators' Association)



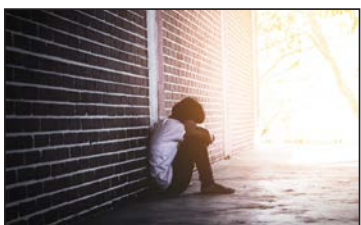
Transgender and Gender Expansive Youth

This course is designed to help professionals in education better understand transgender and nonconforming youth, as well as how to support this vulnerable population. As our world evolves and changes, it behooves us to stay up with the current changes to understand, work with and support all students. Teachers will actively participate in online learning to further develop their understanding of the language used, needs of our student population, how to support transgender and nonconforming youth in our schools, and the law.

Course dates: January 8 - February 4; March 4 - March 31

Cost: \$90 (member) or \$190 (non-member) | Available for 2 graduate credits through ASU

Facilitator: Elizabeth Sedalnick (District Twelve Educators' Association)



Understanding Trauma

This course is designed to help you understand what trauma is, how our students are experiencing it, and how to work with students who have experienced trauma. This introductory course will look at the definition of trauma and how our students may be exhibiting signs of trauma that are masked as other behavioral issues, and how we can make changes in our perceptions and actions to support all students. Note: This course has sensitive material that could be triggering.

Course dates: January 8 - February 4; February 5 - March 3

Cost: \$90 (member) or \$190 (non-member) | Available for 2 graduate credits through ASU

Facilitator: Elizabeth Sedalnick (District Twelve Educators' Association)



Using WIDA's Can Do Descriptors to Drive Instruction

Classroom teachers will understand WIDA ACCESS scores to determine what their EL students need to advance to the next level. Teachers will learn how to group students and plan instruction according to their content area. As always, graphic organizers help us do this valuable work!

Course dates: January 15 - February 26

Cost: \$45 (member) or \$145 (non-member) | Available for 1 graduate credit through ASU

Facilitator: Kim Venegas (Greeley Education Association)



Personal Financial Literacy for Colorado Educators: Making the Most of Your PERA Pension, Employer Benefits, and Investments

Being an educator is a very difficult job. It's even more difficult if you're worried about your personal financial situation. Many educators are confused and/or intimidated by finances, and "don't know what they don't know". This stress can't help but impact their job performance. So this class is designed to not only make a difference in your personal lives, but if it can help you relieve that stress, it will make you even better educators and do an even better job of meeting the needs of our students in these challenging times. This class will also help prepare you to better teach the Colorado Academic Standards for K-12 Personal Financial Literacy (PFL).

Course dates: January 12 - March 3; March 15 - May 5

Cost: \$90 (member) or \$190 (non-member) | Available for 3 graduate credits through ASU

Facilitator: Karl Fisch (Colorado Education Association - Retired)



A Teacher's Path to Understanding Childhood Trauma

Educators will view video segments of Dr. Bruce D. Perry, discuss selected readings, learn how childhood trauma (adverse childhood experiences) can impact any child, and develop a plan to regulate themselves and prepare for students who may be affected by trauma.

Course dates: January 15 - February 26

Cost: \$45 (member) or \$145 (non-member) | Available for 1 graduate credit through ASU

Facilitator: Kim Venegas (Greeley Education Association)



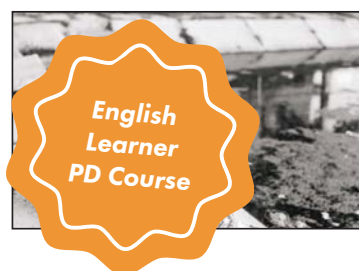
Autism 101: Overall Information and Strategies to Use in Class

Teachers will actively participate in online learning to further develop their understanding of the Autism Disorder and how it impacts the learning of these students. Specific applications will be made to practice by discussing different strategies to support students in the classroom setting. Throughout the course, we will focus on an overview of the disability, how Autism impacts language/emotions, social interactions, cognitive and sensory needs. This will be through reading sections of the book, *The Complete Guide to Asperger's Syndrome* by Tony Attwood as well as other readings and videos.

Course dates: January 15 - February 18

Cost: \$45 (member) or \$145 (non-member) | Available for 1 graduate credit through ASU

Facilitator: Jenny Shoen (Littleton Education Association)



The Boy Who Raised as a Dog Book Study

We will do a book study on *The Boy Who Was Raised as a Dog* to discuss trauma, how it affects children, and how we as educators can understand this and provide simple ideas to use in our relationships with all kids.

Course dates: January 15 - February 18

Cost: \$45 (member) or \$145 (non-member) | Available for 1 graduate credit through ASU

Facilitator: Jenny Shoen (Littleton Education Association)



Behavior as a Form of Communication 101

This course describes how behavior is a form of communication among students (and adults as well). Participants will learn to focus on form vs. function of behavior, and then address the varieties of functions of behavior and how a teacher can implement consequences (positive and negative) to help shape the behavior in a successful way.

Course dates: January 15 - February 18

Cost: \$45 (member) or \$145 (non-member) | Available for 1 graduate credit through ASU

Facilitator: Jenny Shoen (Littleton Education Association)



Thinking Like a Lawyer: A Framework for Teaching Critical Thinking to All Students

Looking for practical ways to close the critical thinking gap? Read *Thinking Like a Lawyer* and participate in this book study to learn how using a critical thinking framework. This course will address underachievement, leveraging family support, evidence based reasoning, social emotional learning and equity.

Course dates: January 15 - February 11

Cost: \$45 (member) or \$145 (non-member) | Available for 1 graduate credit through ASU

Facilitator: Rachel Graham (Estes Park Education Association)



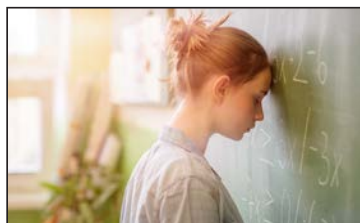
Comprehension Connections: Bridges to Strategic Reading

Teachers will gain engaging and concrete ways to teach abstract reading strategies. The book emphasizes the importance of how to make thinking visible for our students, and how to teach these strategies before students apply them to their independent reading. The book is organized into chapters based on these strategies - schema, inferring, questioning, determining importance, visualizing, and synthesizing. Each strategy has a "launching lesson" that includes a concrete item that is used as an anchor throughout the teaching of the strategy. Teachers can easily implement these lessons right away! During the course, we will also connect these strategies to supporting ELLs.

Course dates: January 15 - February 11

Cost: \$45 (member) or \$145 (non-member) | Available for 1 graduate credit through ASU

Facilitator: Leigh Ann Eucker (Poudre Education Association)



Supporting Math Anxiety with SplashLearn

Teachers will gain engaging and concrete ways to teach abstract reading strategies. The book emphasizes the importance of how to make thinking visible for our students, and how to teach these strategies before students apply them to their independent reading. The book is organized into chapters based on these strategies - schema, inferring, questioning, determining importance, visualizing, and synthesizing. Each strategy has a "launching lesson" that includes a concrete item that is used as an anchor throughout the teaching of the strategy. Teachers can easily implement these lessons right away! During the course, we will also connect these strategies to supporting ELLs.

Course dates: January 15 - February 11

Cost: \$45 (member) or \$145 (non-member) | Available for 1 graduate credit through ASU

Facilitator: Leigh Ann Eucker (Poudre Education Association)



English
Learner
PD Course

Purposeful Play: A Teacher's Guide to Igniting Deep and Joyful Learning Across the Day

Educators will participate in an online book study to further develop their understanding of the importance of play in their classrooms. The authors assert, "Play is one type of environment where children can be rigorous in their learning." At the end of this course, teachers will understand and be able to incorporate play as its own method of instruction and align it with standards.

Course dates: January 15 - February 11

Cost: \$45 (member) or \$145 (non-member) | Available for 1 graduate credit through ASU

Facilitator: Barb Pedrett (Cherry Creek Education Association)



English
Learner
PD Course

Supporting ELL Students in the Math and Science Classroom

Teachers will actively participate in online learning to further develop their ability to support our ELL students. Teachers will explore instructional strategies, develop supports for classroom use and independently grow in content area language learning. Teachers will work on specific, usable applications for their content area.

Course dates: January 15 - February 18; March 18 - April 28

Cost: \$45 (member) or \$145 (non-member) | Available for 1 graduate credit through ASU

Facilitator: Michelle Allen (Boulder Valley Education Association)



Resilient Educators: What You Can Learn About Yourself in Order to Survive the School Year

Do you want to get through your next school year a bit more smoothly, with confidence, self awareness and emotional resilience? You can learn strategies that will help you get a fresh start before you go back to the classroom! Join me in working through multiple activities from Elena Aguilar's *Onward* workbook.

Course dates: January 15 - February 19

Cost: \$45 (member) or \$145 (non-member) | Available for 1 graduate credit through ASU

Facilitator: Kim McLachlan (District Twelve Educators' Association)



The Art of Coaching: Effective Strategies for School Transformation

This course is a book study of Elena Aguilar's book, *The Art of Coaching: Effective Strategies for School Transformation*. Participants will collaboratively discuss the 15 chapters in the text and reflect on implications in their own coaching. Readers find Elena's book to be informative and actionable, inspiring and illuminating, and applicable in many contexts.

Course dates: January 15 - February 19

Cost: \$45 (member) or \$145 (non-member) | Available for 1 graduate credit through ASU

Facilitator: Kim McLachlan (District Twelve Educators' Association)



Nature Journals for Inquiry-Based Learning in Education

In this course, educators will be equipped with the tools to seamlessly integrate nature journaling into their teaching practices, fostering curiosity, critical thinking, and a deep connection with the environment. Delve into the foundations of nature journaling, explore practical techniques, and discover ways to develop inquiry skills in students. With a focus on cross-curricular integration, assessment strategies, and community engagement, this course empowers educators to create dynamic and inspiring learning experiences. Join us as we explore the wonders of the natural world and transform classrooms into vibrant spaces of exploration and lifelong learning.

Course dates: January 15 - February 25; March 20 - April 30

Cost: \$90 (member) or \$190 (non-member) | Available for 2 graduate credits through ASU

Facilitator: Victoria Wilson (Poudre Education Association)



Yoga in the Classroom

Participants will explore ways to bring yoga into the classroom to help students learn to combine breath and movement in a school setting. Yoga provides a great opportunity to learn brain breaks that are movement based while also incorporating balance, breath, coordination and self awareness.

Course dates: January 22 - March 8

Cost: \$135 (member) or \$235 (non-member) | Available for 3 graduate credits through ASU

Facilitator: Jan Pratt (Colorado Education Association - Retired)



The Body Keeps the Score: Brain, Mind, Body in the Healing of Trauma

Teachers will explore what trauma is and looks like, how it might present in the population, and how trauma has the ability to reshape the body and brain, compromising the sufferer's capacities for pleasure, engagement, self-control and trust. The book then explores innovative treatment options that can help activate the brain's neuroplasticity.

Course dates: January 22 - March 8

Cost: \$90 (member) or \$190 (non-member) | Available for 2 graduate credits through ASU

Facilitator: Jan Pratt (Colorado Education Association - Retired)

All class dates are subject to change based on facilitator availability. All classes are subject to cancellation if fewer than five students enroll by the official class start date.



Mindfulness for Educators

This program is a holistic training for educators and members of the learning community. The sessions and materials help deliver yoga and mindfulness essentials to beginners and experienced practitioners. While participants are always welcome to delve deeper into any of the areas we cover, we aim to deliver a sampling of different styles of yoga and meditation so that students can experience some of the options available to them while creating a long relationship with yoga, meditation, self-care and mindfulness.

Course dates: January 22 - March 1

Cost: \$135 (member) or \$235 (non-member) | Available for 3 graduate credits through ASU

Facilitator: Jan Pratt (Colorado Education Association - Retired)



Routines for Success in the Classroom and in Life

The book study will engage participants in reflection, planning and implementation of transformative practices that will lead to more purposeful and engaged classrooms and professional learning teams. Participants will collaboratively discuss strategies and techniques for effectively engaging students within the school culture through self-reflection and character building.

Course dates: January 22 - February 18

Cost: \$45 (member) or \$145 (non-member) | Available for 1 graduate credit through ASU

Facilitator: Amy Bohan (Westminster Education Association)



Recognizing and Coping with Sensory Processing Differences in the Classroom

Teachers will actively participate in online learning to further develop their understanding of sensory processing disorders in the classroom. We will be exploring the eight senses (touch, smell, taste, hearing, vision, vestibular, proprioception, and interoception) and how to recognize when a student is having difficulty tuning in or filtering out information in the school environment. We will also learn how to help these students in the classroom with simple accommodations and strategies.

Course dates: January 22 - February 26; February 26 - March 31

Cost: \$45 (member) or \$145 (non-member) | Available for 1 graduate credit through ASU

Facilitator: Jenny Frank (Cherry Creek Education Association)



Trauma Stewardship: An Everyday Guide to Caring for Self While Caring for Others

This course will be a book study of *Trauma Stewardship, An Everyday Guide to Caring for Self While Caring for Others*. Participants will actively participate in online learning to further develop their understanding of trauma exposure in the workforce. This book uses humor, research and personal reflections to discuss symptoms people experience when being exposed to trauma and the trauma of those they help. Through reflections, readings, and journals we will gain fresh, new strategies to stay present, balance our personal and professional lives, and most importantly keep from becoming burnt out and overwhelmed. The author, Laura van Dernoot Lipsky is a trauma social worker and educator with decades of experience in helping others, who spend their careers making the world a better place.

Course dates: January 22 - March 17

Cost: \$90 (member) or \$190 (non-member) | Available for 2 graduate credits through ASU

Facilitator: Laurie McPherson (Poudre Education Association)

All class dates are subject to change based on facilitator availability. All classes are subject to cancellation if fewer than five students enroll by the official class start date.



Why Play Works: Big Changes Start Small

Teachers will actively participate in online learning to further develop their understanding of choice time in the classroom grades K-8. Specific applications will be made to practice, as teachers will read and discuss reading assignments and use their classroom as their “lab”. Teachers will apply new play strategies and centers into their classrooms and discuss their findings through online discussions and end of unit slideshow.

Course dates: January 22 - February 28

Cost: \$45 (member) or \$145 (non-member) | Available for 1 graduate credit through ASU

Facilitator: Barb Pedrett (Cherry Creek Education Association)



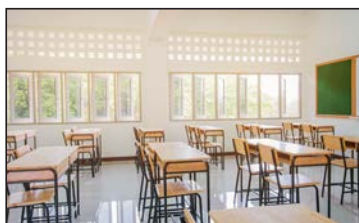
Restorative Practices in the Classroom

Teachers, special service providers, and/or school professionals will actively participate in online learning to further develop their understanding of restorative practices, including but not limited to conflict resolution, restorative circles, and the importance of relationship building as it pertains to education. Specific applications will be made to practice, as teachers will outline a lesson using the restorative circle model for their classroom.

Course dates: January 22 - February 26; March 4 - April 8

Cost: \$45 (member) or \$145 (non-member) | Available for 1 graduate credit through ASU

Facilitator: Shannon Shearer (Cherry Creek Education Association)



Lost at School: Why Our Kids with Behavioral Challenges are Falling Through the Cracks and How We Can Help Them

This book study will provide participants with an opportunity to explore the ways to help students with challenging behaviors be more successful at school and in life. The book works to help educators and parents see challenging student behaviors in more productive and empathetic ways by building relationships and finding non-punitive, proactive and collaborative solutions.

Course dates: January 22 - February 26

Cost: \$45 (member) or \$145 (non-member) | Available for 1 graduate credit through ASU

Facilitator: Mary Robinson (District Twelve Educators' Association)



TRIBES: Cultivating Strong Classroom Community

Educators will actively participate in online learning to further develop their understanding and experience in cultivating a strong classroom community. Participants will additionally build their “toolbox” of engaging classroom community resources and activities. We will read the text, *Reaching All by Creating TRIBES Learning Communities*, and study what it means to create welcoming classrooms where all students thrive.

Course dates: January 22 - March 17

Cost: \$90 (member) or \$190 (non-member) | Available for 2 graduate credits through ASU

Facilitator: Katrina Neal (Denver Classroom Teachers' Association)



English
Learner
PD Course

Comprehension Strategies Using Peardeck

Educators will actively participate in online learning to further develop their understanding of various comprehension strategies to engage specialized populations within the classroom. The application of Peardeck will incorporate comprehension strategies related to the educator’s specific content area to create an engaging and interactive learning environment. Educators will learn how to utilize specific tools within Peardeck to reach students who are ELL, LD, etc.

Course dates: January 28 - February 25

Cost: \$90 (member) or \$190 (non-member) | Available for 2 graduate credits through ASU

Facilitator: Caroline Davis (District Twelve Educators' Association)



Creating Interactive Virtual Field Trips

In this course, teachers will examine how to effectively plan, design, and create a virtual field trip using ThingLink. You'll explore the different ways to create interactive, engaging content that students can easily navigate and learn from. By the end of this course, you will have a variety of usable ThingLinks including an interactive virtual field trip that you could use in the remote, hybrid, or flipped classroom setting.

Course dates: January 28 - February 25

*Cost: \$90 (member) or \$190 (non-member) | Available for 2 graduate credits through ASU
Facilitator: Caroline Davis (District Twelve Educators' Association)*



English
Learner
PD Course

The Science of Reading in Action

Educators will actively participate in online learning to further develop their understanding of the science of reading. This course will introduce and help educators understand new brain research on teaching students how to read. We will be doing a book study, researching, and creating hands-on activities with our students in our classrooms. This course is appropriate for elementary, middle school, reading intervention teachers, instructional coaches, and administrators.

Course dates: January 29 - February 25

*Cost: \$45 (member) or \$145 (non-member) | Available for 1 graduate credit through ASU
Facilitator: Barb Pedrett (Cherry Creek Education Association)*



Advanced Google Tools: Harnessing the Power of Google Level II Certification

This course is designed to build and expand upon the learning offered in the Google Level I course. There are 11 modules for the learner to engage in at their own pace. Once the modules are complete, you will be able to prove your knowledge of the Google platform and join the ranks of Google Level II Educators around the world. The Level 2 Educator badge can be added to your resume, website, school credential, or other professional network. Through this model, educators will engage in a collaborative learning environment with other colleagues examining how using technology in the classroom and for a collaborative work environment can contribute to student achievement. Participants will depart from old systems of thinking to expand upon the foundational structures of the Google for Education framework and consider even further options of a blended learning model.

Course dates: January 29 - March 24

*Cost: \$90 (member) or \$190 (non-member) | Available for 2 graduate credits through ASU
Facilitator: Robert Thompson (Colorado Education Association)*



Permission to Feel: Unlocking the Power of Emotion to Help Our Kids, Our Society and Ourselves Thrive

This course is a book study on Marc Brackett's best selling book, *Permission to Feel*. Based on research from the Yale Center for Emotional Intelligence, this course will focus on practical and research based five keys to emotional intelligence and how those impact education and learning. Educators will learn his technique known as "Ruler Training" and transform their emotional literacy.

Course dates: February 5 - March 3

*Cost: \$45 (member) or \$145 (non-member) | Available for 1 graduate credit through ASU
Facilitator: Stephanie Fast (Littleton Education Association)*

All class dates are subject to change based on facilitator availability. All classes are subject to cancellation if fewer than five students enroll by the official class start date.



Educator Bandwidth: How to Reclaim Your Energy, Passion and Time

In this book study, educators will focus on the latest neuroscience research as it pertains to the most effective strategies and habits that help you manage your mental bandwidth and prioritize drains on mental energy. Educators will focus on six key factors that contribute to their bandwidth: balancing their priorities, filtering through possibilities, mental habits that improve focus, physical habits that fuel the brain, connection with others and workload and time management. By establishing good habits, focusing on what's possible within your locus of control, and balancing priorities, educators can improve their bandwidth and feel more engaged, centered, and become more effective in their work.

Course dates: February 5 - March 3

Cost: \$45 (member) or \$145 (non-member) | Available for 1 graduate credit through ASU

Facilitator: Stephanie Fast (Littleton Education Association)



Alternative Approaches to Discipline

Educators will actively participate in online learning to identify the causes and conditions of student behavior, research the impact of exclusionary discipline approaches, and discover alternative responses to undesired student behavior. We will read current research on the psychology and physiology of human behavior as it applies to students. We will also discover the long-lasting effects of suspensions, expulsions, and other methods of discipline that remove students from the classroom. Educators will be expected to approach this topic with an open mind and a willingness to learn new approaches to teaching and disciplining.

Course dates: February 5 - March 17; March 18 - April 28

Cost: \$90 (member) or \$190 (non-member) | Available for 2 graduate credits through ASU

Facilitator: Stephanie Kelln (Greeley Education Association)



Supporting Behavior through Applied Behavior Analysis Principles

We all struggle with student behavior. With recent events, Covid, online teaching, collective and individual trauma, politics, etc., it seems that our students are coming into our classes increasingly unprepared to learn. Using the principles of Applied Behavior Analysis (ABA), we will explore practical steps for understanding and supporting the behavioral, social, and emotional needs of all students. ABA procedures and philosophies will help you identify the what, why, and how of behavior in order to provide a safe and inclusive classroom.

Course dates: February 5 - March 17

Cost: \$45 (member) or \$145 (non-member) | Available for 1 graduate credit through ASU

Facilitator: Stephanie Kelln (Greeley Education Association)



**English
Learner
PD Course**

Creating Educational Videos to Enhance Student Learning Inside and Outside of the Classroom

This class will help you to create videos that you can post to your websites. The videos will allow you to have a flipped classroom, a blended learning classroom, or merely have videos on your website for those students who are absent. It can be as if there are multiple educators in one classroom if used during class. Students can learn at their own pace because they can watch the video as many times as they need to. It allows the educator to be free to work in small groups or one on one with students while the rest of the class can move ahead.

Course dates: February 5 - March 3; March 4 - March 31

Cost: \$90 (member) or \$190 (non-member) | Available for 2 graduate credits through ASU

Facilitator: Catherine Lee (District Twelve Educators' Association)

All class dates are subject to change based on facilitator availability. All classes are subject to cancellation if fewer than five students enroll by the official class start date.



English
Learner
PD Course

Let's Talk Math! Math Routines that Foster Reasoning, Thinking, and Student Talk

In this course, teachers will explore several different math routines that get students talking about math in a fun and non-intimidating way. These routines can be easily built into an already existing lesson plan because they only take 5-10 minutes. Help build consistency in your math classroom so students are using math reasoning skills and critical thinking without even realizing they're doing math! Participants will also connect math routines to the Standards for Mathematical Practices (SMP).

Course dates: February 5 - March 10

Cost: \$45 (member) or \$145 (non-member) | Available for 1 graduate credit through ASU

Facilitator: Lindsey Mater (Poudre Education Association)



English
Learner
PD Course

Technology Tools for English Language Learners

In this course, we will explore and apply educational technology tools to increase the engagement and achievement of ELL students. We'll focus on tools that facilitate communication, content delivery, literacy development, academic language growth, and assessments. The course content is relevant and applicable to in-person instruction, remote/online learning, and hybrid models.

Course dates: February 5 - March 10; April 1 - May 3

Cost: \$90 (member) or \$190 (non-member) | Available for 2 graduate credits through ASU

Facilitator: Amanda McIntyre (District Twelve Educators' Association)



English
Learner
PD Course

Nearpods: Real-time Insight and Interactive Lessons

Teachers will actively participate in building interactive lessons, to ensure all students are on task and engaged. Nearpods provide visuals and interactive options to engage student learning, ask open-ended questions, and help teachers check for understanding in real time.

Course dates: February 5 - February 29; March 4 - March 29

Cost: \$45 (member) or \$145 (non-member) | Available for 1 graduate credit through ASU

Facilitator: Amanda McIntyre (District Twelve Educators' Association)



Teaching With Poverty In Mind

Educators will actively participate in this online book study to further develop their understanding and experience in teaching students of poverty. Participants will research what being poor does to kids' brains and what schools and educators can do about it. This course is appropriate for educators of any grade/content level as well as instructional coaches, interventionists, special service providers, and administrators.

Course dates: February 5 - March 3

Cost: \$45 (member) or \$145 (non-member) | Available for 1 graduate credit through ASU

Facilitator: Katrina Swanson (Denver Classroom Teachers' Association)



The School Garden
NATURE'S CLASSROOM

The School Garden, Nature's Classroom

Having a school garden provides children the opportunity to learn new skills, enjoy the outdoors, and benefit from local, healthy foods. School gardens are an excellent way to engage children outside the classroom whilst teaching them teamwork, responsibility, creativity, and nutrition. When starting a school garden there are many factors to consider, and getting started can feel daunting. This course is for school personnel that are interested in starting a school garden as well as school personnel that have existing school gardens. We will dig into the various factors that promote a healthy sustainable garden including community and school involvement, funding, specific plants that grow well in a school garden, and more. At the end of the course students will be prepared to develop a school garden and/or refine an existing school garden.

Course dates: February 5 - March 18

Cost: \$90 (member) or \$190 (non-member) | Available for 2 graduate credits through ASU

Facilitator: Kase Pooley (Denver Classroom Teachers' Association)



How to Address Bullying - A Proactive Approach

Preventing bullying and creating a safe environment for our students is a top priority at all levels. This course will define bullying and the different types, explore creating a safe environment, work on assessing bullying, and help us to help students to stop bullying whether they or someone they know are experiencing bullying.

Course dates: February 5 - March 3

Cost: \$90 (member) or \$190 (non-member) | Available for 2 graduate credits through ASU

Facilitator: Elizabeth Sedalnick (District Twelve Educators' Association)



THE Classroom Management Book

Participants will actively participate in online learning to further develop their understanding of classroom management. Drawing on principles and models from the book, teachers will examine their own classroom management practices and develop a classroom management plan that can be implemented on the first day of school or the 100th day of school.

Course dates: February 5 - March 3

Cost: \$45 (member) or \$145 (non-member) | Available for 1 graduate credit through ASU

Facilitator: Elizabeth White (Colorado Springs Education Association)



The Inclusion Toolbox: Strategies and Techniques for ALL Educators

Participants will actively participate in online learning to further develop their understanding of developing, implementing and expanding an inclusive program in the classroom and school. Class participants gain techniques and guidance on how to create and sustain an education program for all grades and content areas in order to empower students with disabilities.

Course dates: February 5 - March 3

Cost: \$45 (member) or \$145 (non-member) | Available for 1 graduate credit through ASU

Facilitator: Elizabeth White (Colorado Springs Education Association)



Uncovering the Logic of English

In this book, participant will discover the LOGIC of English. Have you found yourself asking why English words are spelled the way they are? Why is there a silent e in have? Are you looking for ways to improve your phonic instruction? Would you like a new approach to teaching "sight words?" This book will take participants on a discovery of English and how it really is a logical language. Participants will discuss their learning in discussion boards, reflect on the material, apply learning in assignments, and get feedback from the facilitator.

Course dates: February 12 - March 24

Cost: \$90 (member) or \$190 (non-member) | Available for 2 graduate credits through ASU

Facilitator: Rachel Graham (Estes Park Education Association)



6 Ways to Bring the Science of Reading Into Your Classroom

This book study of *Shifting the Balance: 6 Ways to Bring the Science of Reading into the Balanced Literacy Classroom* will give you actionable ways to enhance your current reading instruction. Reading topics that will be covered include comprehension, phonemic awareness, phonics, high-frequency words, cueing system, and texts for beginning readers. The class will give you a menu of options to show your learning. Through discussions and assignments, you will apply your learning into your classroom immediately.

Course dates: February 12 - March 17

Cost: \$45 (member) or \$145 (non-member) | Available for 1 graduate credit through ASU

Facilitator: Rachel Graham (Estes Park Education Association)

All class dates are subject to change based on facilitator availability. All classes are subject to cancellation if fewer than five students enroll by the official class start date.



Mindset: The New Psychology of Success

This course will examine belief systems about learning and how failures and challenges can be reframed as opportunities for growth. Strategies and tools will be developed for creating a culture of perseverance in classrooms. Participants will reflect on their current practices around mindset and create an implementation plan for their educational environment that focuses on growth mindset.

Course dates: February 19 - March 17; March 25 - April 21

Cost: \$45 (member) or \$145 (non-member) | Available for 1 graduate credit through ASU

Facilitator: Amy Bohen (Westminster Education Association)



Strategies that Engage: Moving Beyond the Stereotypes of Poverty

This course will provide an opportunity to explore core strategies for engagement that lead to academic success for learners. Participants will explore seven factors that establish purposeful learning routines to increase motivation and empower students to take ownership of learning. Enrolled educators will implement new strategies and create an immediate plan for their classroom that enriches learning and revitalizes the school day.

Course dates: February 19 - March 10

Cost: \$45 (member) or \$145 (non-member) | Available for 1 graduate credit through ASU

Facilitator: Amy Bohen (Westminster Education Association)



Gifted and Talented: A Primer for Student Success

In *Gifted and Talented: A Primer for Student Success*, educator learners will explore the characteristics, challenges, and best practices of engaging gifted and talented students in the classroom. By understanding the unique qualities of GT students, educators will be better equipped to handle the challenges faced by students, parents, and educators as they foster growth within the child, thereby inspiring the joy of continued learning.

Course dates: February 19 - March 4

Cost: \$45 (member) or \$145 (non-member) | Available for 1 graduate credit through ASU

Facilitator: Anne Sutton (Windsor-Severance Education Association)



Atomic Habits: Changing Your Systems to Go from Good to Great

Learn how create systems that lead to good habits, breaking bad ones, and overcoming a lack of motivation. This book study will reshape the way you think about progress and success, and give you the tools and strategies you need to transform your habits.

Course dates: February 26 - March 24; March 18 - April 14

Cost: \$45 (member) or \$145 (non-member) | Available for 1 graduate credit through ASU

Facilitator: Amy Bohen (Westminster Education Association)



Close Study: Write About Texts as Sources. Write Like Texts as Mentors

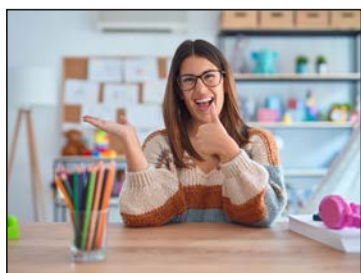
In this course, we will explore the use of texts as sources and texts as mentors. In this way, we will develop a mental model for an inquiry-based approach to designing or adapting short- or long- term units of study that brings the reading and writing workshops together. This course is designed for elementary educators with or without a core curricular resource.

Course dates: February 26 - March 31

Cost: \$45 (member) or \$145 (non-member) | Available for 1 graduate credit through ASU

Facilitator: Morgan Davis (Jefferson County Education Association)

All class dates are subject to change based on facilitator availability. All classes are subject to cancellation if fewer than five students enroll by the official class start date.



Thriving Educators: Daily Activities to Cultivate Your Emotional Resilience

Do you want to get through your next school year a bit more smoothly, with confidence, self awareness and emotional resilience? You can learn strategies that will help you get a fresh start before you go back to the classroom! Join me in working through multiple activities from Elena Aguilar's Onward workbook. Let's gather some tools to take care of ourselves as well as our students! This book study will focus on the 2nd half of The Onward Workbook. You do not need to take the Survival section first as there is no required order.

Course dates: February 26 - April 4

Cost: \$45 (member) or \$145 (non-member) | Available for 1 graduate credit through ASU

Facilitator: Kim McLachlan (District Twelve Educators' Association)



English
Learner
PD Course

Culturally Responsive Teaching and the Brain

In this book study, students will learn that the achievement gap remains a stubborn problem for educators of culturally and linguistically diverse students. Culturally responsive pedagogy has shown great promise in meeting this need, but many educators still struggle with its implementation. In this book, Zaretta Hammond draws on cutting-edge neuroscience research to offer an innovative approach for designing and implementing brain-compatible culturally responsive instruction.

Course dates: February 26 - April 1

Cost: \$45 (member) or \$145 (non-member) | Available for 1 graduate credit through ASU

Facilitators: Skyler Zody (Aurora Education Association)



English
Learner
PD Course

Leaders for Just Schools Level 2

This course is based upon NEA's Leaders for Just Schools program. Teachers will actively participate in online and in-person learning to further develop their understanding of equity and its impact on learning environments. Teachers will ultimately examine ways to evaluate the equity of their own schools and create a plan to improve conditions of equity in their school.

Course dates: March 3 - April 28

Cost: Free (member) or \$190 (non-member) | Available for 2 graduate credits through ASU

Facilitator: Ang Anderson and Rhiannon Wenning (Jefferson County Education Association)



English
Learner
PD Course

Advanced Edpuzzle Skills

Teachers will actively participate in online learning to further deepen their understanding of Edpuzzle. You will learn how to leverage your current Edpuzzle skills with engaging, choice driven lessons. You will also learn how to organize your content better and connect your Edpuzzle with your current LMS. If you are familiar with Edpuzzle and are looking to get to the next level of skillset, this is the course for you. You will learn how to use Edpuzzle to leverage engaging, multidimensional instruction and choice. This course is an ideal followup to the course "Literacy Strategies for the Diverse Classroom Using Edpuzzle". If you are looking for a beginner course, I recommend you take that course first, then this course.

Course dates: March 3 - April 7

Cost: \$90 (member) or \$190 (non-member) | Available for 2 graduate credits through ASU

Facilitator: Caroline Davis (District Twelve Educators' Association)



English
Learner
PD Course

Literacy Strategies for the Diverse Classroom Using Edpuzzle

Teachers will actively participate in online learning to further develop their understanding of various literacy strategies to engage specialized populations within the classroom. The application of Edpuzzle will incorporate educational videos related to the teacher's specific content area to create an engaging and interactive learning environment. Teachers will learn how to utilize specific tools within Edpuzzle to reach students who are DHH, ELL, LD, etc.

Course dates: March 3 - April 7

Cost: \$90 (member) or \$190 (non-member) | Available for 2 graduate credits through ASU

Facilitator: Caroline Davis (District Twelve Educators' Association)



**English
Learner
PD Course**

Picture Book Trios: Meeting Needs of Diverse Learners with a Cross-Curricular Approach

Do you love teaching with picture books? In this course, you will learn how to choose books in trios centered around a theme, while using primary sources, vocabulary strategies, and geographic skills at the same time. These strategies will help support ELL students, as well as the rest of the class and can be tailored to your needs as diverse classrooms. You will gain the knowledge on how and where to find diverse picture books and other materials for strong content learning.

Course dates: March 3 - April 6

Cost: \$90 (member) or \$190 (non-member) | Available for 2 graduate credits through ASU

Facilitator: Christy Howard (Colorado Springs Education Association)



Overcoming Dyslexia

Participants will gain knowledge that provides the foundation for the latest science-based diagnosis of dyslexia and effective interventions for reading difficulties. The course will go in depth how skilled reading develops and when to expect the successive milestones. Participants will also learn how to recognize the specific clues that should alert them that reading is not progressing smoothly. This course will provide both educators who work with struggling readers of all ages with practical resources on helping them become better readers.

Course dates: March 4 - April 28

Cost: \$90 (member) or \$190 (non-member) | Available for 2 graduate credits through ASU

Facilitator: Larisa Baskin (Aurora Education Association)



Number Sense Routines

Deep understanding of number sense is the foundation for developing math skills in young learners. The daily use of 5 to 15 minute exercises will help students build number sense. Participants in this book study will learn how easily number sense can be developed and about ways how to implement responsive number sense routines no matter what curriculum materials teachers use.

Course dates: March 4 - March 31

Cost: \$45 (member) or \$145 (non-member) | Available for 1 graduate credit through ASU

Facilitator: Larisa Baskin (Aurora Education Association)



Hacking School Discipline: 9 Ways to Create a Culture of Empathy and Responsibility based on Restorative Justice

In this book study, educators will learn 9 ways to create a culture of empathy and responsibility using restorative justice and other techniques. They will learn how to not only change behaviors by replacing traditional school discipline practices that do not work, but transform students into productive citizens, accountable for their own actions.

Course dates: March 4 - April 7

Cost: \$45 (member) or \$145 (non-member) | Available for 1 graduate credit through ASU

Facilitator: Stephanie Fast (Littleton Education Association)



Math Games & Puzzles: Bringing the Fun Back into Learning Mathematics!

In this course, teachers will explore how math games and puzzles can bring the fun back into learning (and teaching) mathematics! Through discussions, reflections and playing, participants will discover how incorporating math games and puzzles can help engage students in math in a non-intimidating way. Participants will also connect math games and puzzles to the Standards for Mathematical Practices (SMP). This course is appropriate for all K-12 math teachers.

Course dates: March 4 - April 7

Cost: \$45 (member) or \$145 (non-member) | Available for 1 graduate credit through ASU

Facilitator: Lindsey Mater (Poudre Education Association)

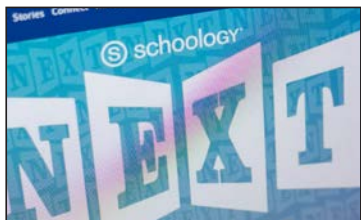


High Leverage Practices in Special Education

In this course, explore 22 high-leverage practices developed and published by the Council for Exceptional Children (CEC), in partnership with the Collaboration for Effective Educator Development, Accountability and Reform (CEEDAR). These HLP's are intended to address the most critical practices that every K-12 special educator should utilize. Participants will have an opportunity to understand the practices, dig into the research and rationale, and see videos of teachers in action modeling the components of these research based practices. Teachers will have opportunities to collaborate with one another through discussion boards and complete weekly assignments designed to develop their understanding and identify implementation strategies.

Course dates: March 4 - March 31; April 1 - April 28

Cost: \$45 (member) or \$145 (non-member) | Available for 1 graduate credit through ASU
Facilitator: Erin Grodeska (Aurora Education Association)



Creating an Interactive Schoology Website

In this class, you will learn to set up a class through Schoology. You will be able to assign lessons that can include videos, documents, tests, quizzes, and classroom discussions. You can take attendance and set up a grade book. You can use Schoology as a way to have a blended classroom or to purely house what you've done so that students can check out what they have missed while they were absent. You can archive your class and then copy what you've created for the following year so that you won't have to recreate the wheel.

Course dates: March 4 - March 31

Cost: \$90 (member) or \$190 (non-member) | Available for 2 graduate credits through ASU
Facilitator: Catherine Lee (District Twelve Educators' Association)



Advanced Schoology: Take Your Skills to the Next Level

Educators will actively participate in online learning to further develop their Schoology page with a variety of engaging and interactive lessons and web design. By the end of this course, educators will be able to do the following: Create banners and buttons that link to a variety of websites; create interactive lessons using programs such as Edpuzzle or Flipgrid and embed them into the Schoology website; create tutorial videos for students and families about how to navigate your website; create a variety of assessments and activities.

Course dates: March 4 - March 31

Cost: \$90 (member) or \$190 (non-member) | Available for 2 graduate credits through ASU
Facilitator: Catherine Lee (District Twelve Educators' Association)



AVID: Support Educators and Students Need to Encourage College and Career Readiness and Success

Teachers will be able to actively pivot their approach from instructor to facilitator and design learning opportunities that challenge students to think critically, ask questions, and collaborate to create solutions, using AVID strategies. The course will provide scaffolding for educators and students who need to be college and career-ready and successful.

Course dates: March 4 - April 5; April 1 - May 3

Cost: \$90 (member) or \$190 (non-member) | Available for 2 graduate credits through ASU
Facilitator: Amanda McIntyre (District Twelve Educators' Association)



Building Relationships with Students

As we have learned during the Pandemic, building relationships with students is a key piece of what we do as educators. Without relationships, we will be unable to accomplish anything else with students. In this course, we take a look at what, why, and how to build relationships with our students. This is appropriate for all educators at all levels including but not limited to teachers, counselors, administrators, and licensed staff. This is a self-paced course and all materials are included.

Course dates: October 9 - November 5

Cost: \$90 (member) or \$190 (non-member) | Available for 2 graduate credits through ASU
Facilitator: Elizabeth Sedalnick (District Twelve Educators' Association)



Content Writing for English Learners: Writing Instruction You Can Use Tomorrow!

Educators will learn to use graphic organizers to scaffold writing for English learners. Consistent use of the same organizers allow students to learn the content, and not focus on learning the use of multiple organizers. Work will focus on labeling, description, sequence, summary writing, and compare and contrast writing. Course is supported with work by Marzano, Natalie Wexler, and Betsy Rupp Fulwiler.

Course dates: March 4 - April 15

Cost: \$45 (member) or \$145 (non-member) | Available for 1 graduate credit through ASU

Facilitator: Kim Venegas (Greeley Education Association)



What Teachers Need Now: Reflections from a First Year Teacher

Teachers need mentors to guide them through the first year. Using reflections from a first year teacher, the class addresses the highest, most prevalent needs that new teachers have. College is theory, teaching is an on the job profession. To ensure new teachers stay in education, the information presented in a podcast and discussions with classmates and the instructor, we intend to provide resources, support, and encouragement to help teachers do well in a complex environment that they most likely were not prepared for. This course is most appropriate for elementary teachers.

Course dates: March 4 - April 15

Cost: \$45 (member) or \$145 (non-member) | Available for 1 graduate credit through ASU

Facilitator: Kim Venegas (Greeley Education Association)



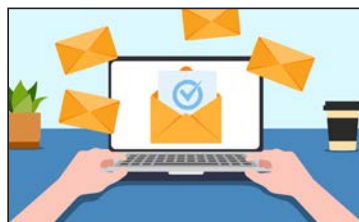
An Introduction to Students with a Hearing Loss

Teachers will actively participate in online learning to further develop their understanding of hearing loss, technology, service providers, and strategies for accessibility in general education classrooms. Specific applications will be made to practice, as teachers will adapt a lesson using the accommodations discussed. All participants will work on a planning template in a discipline of their choice.

Course dates: March 11 - April 14

Cost: \$45 (member) or \$145 (non-member) | Available for 1 graduate credit through ASU

Facilitator: Katy Griebel (Jefferson County Education Association)



Using Mail Merge for Parent & Student Communication

In this course, teachers will actively participate in online learning to learn how to use MailMerge to streamline their communication with parents and students. Participants will learn how to create customized communication templates, merge data from spreadsheets, and send personalized messages in bulk differentiating the communication between students, staff, and families.

Course dates: March 11 - April 14

Cost: \$90 (member) or \$190 (non-member) | Available for 2 graduate credits through ASU

Facilitator: Brittany Osborn (Poudre Education Association)



English
Learner
PD Course

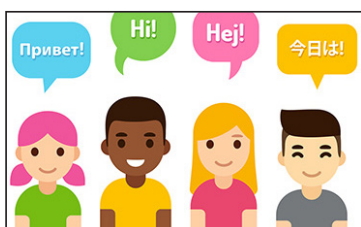
Going Deeper with Standards-based Grading

In this course, teachers will actively participate in online learning to further develop their understanding of Standards-based grading. Teachers will continue the work of unpacking their identified essential standards to create proficiency scales (rubrics) and assessment tasks. Discussions will continue around standards-based grading in the classroom, communication, data analysis, and work habits. This course is encouraged to be taken with teams, but it is not required.

Course dates: March 11 - April 15

Cost: \$90 (member) or \$190 (non-member) | Available for 2 graduate credits through ASU

Facilitator: Brittany Osborn (Poudre Education Association)



Distinguishing Language Acquisition from Learning Disabilities

This book study will provide participants with an opportunity to explore the differences between language acquisition and learning disability in English Language Learners who are struggling to read. The book will help educators make more informed choices around strategies and services to best support English Language Learners. The updated edition includes expanded information on appropriate Multi-Tier System of Support (MTSS), nine common misconceptions that can lead to students being misidentified as special education students, evidence based practices for more successful teaching for students acquiring English and appropriate techniques for assessing English Language Learners for special education. Participants will analyze their schools current teaching practices, MTSS procedures and brainstorm improvements to these systems.

Course dates: March 18 - April 22

Cost: \$45 (member) or \$145 (non-member) | Available for 1 graduate credit through ASU

Facilitator: Mary Robinson (District Twelve Educators' Association)



Deeper Reading Book Study: How to Help Older Students Read Challenging Texts

Teachers will actively participate in online learning to further develop their understanding of teaching students to read multi-layered and complex texts at deeper levels for higher student understanding, enjoyment and achievement. Specific applications will be made to practice, as teachers will create plans to implement and maintain procedures to deepen student understanding of complex texts.

Course dates: March 18 - April 14

Cost: \$45 (member) or \$145 (non-member) | Available for 1 graduate credit through ASU

Facilitator: Elizabeth White (Colorado Springs Education Association)



Using Picture Books to Support LGBTQ Standards in the Elementary Classroom

Picture books offer an excellent platform to share and include stories for students from an LGBTQ lens. They support building a kind, inclusive classroom environment while connecting to state standards. Students will participate in research and activities to gain an understanding on how to apply knowledge of current picture books to support LGBTQ standards.

Course dates: March 24 - April 27

Cost: \$90 (member) or \$190 (non-member) | Available for 2 graduate credits through ASU

Facilitator: Christy Howard (Colorado Springs Education Association)



English
Learner
PD Course

Culturally and Linguistically Diverse History Makers

This class is geared for elementary teachers who want to celebrate the contributions of five culturally diverse individuals in American history. Educators will actively participate in building skills centered around the contributions of Mario Molina, Pura Belpre, Gyo Fujikawa, Teresa Carreno, and Jim Thorpe. Throughout this course, educators will see how to build a strong cross-curricular set of lessons geared to interests/needs of their own ELL students while supporting their students in language development, mapping skills, and critical thinking.

Course dates: March 24 - April 27

Cost: \$90 (member) or \$190 (non-member) | Available for 2 graduate credits through ASU

Facilitator: Christy Howard (Colorado Springs Education Association)

All class dates are subject to change based on facilitator availability. All classes are subject to cancellation if fewer than five students enroll by the official class start date.



Google Level 1 Certification Training

This course is designed to provide educators with the confidence and understanding of how to deliver the Google suite within their classroom and workplace. Educators will engage in a collaborative learning environment with other colleagues examining how using technology in the classroom and work environment can contribute to student achievement.

Course dates: March 25 - May 5

Cost: \$90 (member) or \$190 (non-member) | Available for 2 graduate credits through ASU

Facilitator: Robert Thompson (Colorado Education Association)



A Little Guide for Teachers: Supporting Behavior in the Classroom

The book, *A Little Guide for Teachers: Supporting Behavior in the Classroom*, will help guide our thinking and learning. We will explore topics such as different definitions of behavior, flexibility, structure, and managing the mood of the classroom. Throughout this course we will reflect on our own teaching, challenge ideas, and learn new tips and tricks to help support behavior within your role.

Course dates: April 1 - May 5

Cost: \$45 (member) or \$145 (non-member) | Available for 1 graduate credit through ASU

Facilitator: Kylene Pedrett (Cherry Creek Education Association)



A Little Guide for Teachers: Diversity in Schools

The book, *A Little Guide for Teachers: Diversity in Schools*, will help guide our thinking and learning. We will explore topics such as the importance of being knowledgeable on histories, trends, and controversies in the language of diversity. As well as creating culturally connected spaces, catering for all voices, modeling respect for diversity in schools, having belonging through curriculum, creating global citizens, and influencing positive change.

Course dates: April 1 - May 5

Cost: \$45 (member) or \$145 (non-member) | Available for 1 graduate credit through ASU

Facilitator: Kylene Pedrett (Cherry Creek Education Association)



Teacher Wellbeing and Self-Care

With teacher burnout at an all time high, what are you doing to take care of yourself so that you can be your best for you, your family, friends, and students? In this course we are going to dive deep into how to take care of ourselves, find meaning in teaching, and feeling like our efforts are worth it. The book, *A Little Guide for Teachers: Teacher Wellbeing and Self-care*, will help guide our thinking and learning. We will explore topics such as keeping your values and moral purpose at the forefront of your professional role, maintaining a sense of perspective, and managing your workload effectively and efficiently. We will also learn about handling stress, fostering peer relationships, and promoting agency within your role.

Course dates: April 1 - May 5

Cost: \$45 (member) or \$145 (non-member) | Available for 1 graduate credit through ASU

Facilitator: Kylene Pedrett (Cherry Creek Education Association)



Time Management for the Educator, Counselor, and Administrator

Can't find the time for a moment to yourself? Feeling pressured and like you need to reset? This class gives you a set of strategies to help you make sure you're taken care of so you can take care of others in your important role in education.

Course dates: April 1 - April 28

Cost: \$90 (member) or \$190 (non-member) | Available for 2 graduate credits through ASU

Facilitator: Elizabeth Sedalnick (District Twelve Educators' Association)

All class dates are subject to change based on facilitator availability. All classes are subject to cancellation if fewer than five students enroll by the official class start date.



Mental Health for Our Students: The Top 5 Struggles Our Students Face Today

Students today are facing such a different set of struggles than we did when we were in school. This course focuses and introduces the five major topics that kids deal with today including (but not limited to) bullying, mental health, suicide, stress, and inequity. In this class we will work to understand and find a set of tools to help our students navigate through this new age with support from us. No books needed, all materials are included.

Course dates: April 1 - May 5

*Cost: \$90 (member) or \$190 (non-member) | Available for 2 graduate credits through ASU
Facilitator: Elizabeth Sedalnick (District Twelve Educators' Association)*

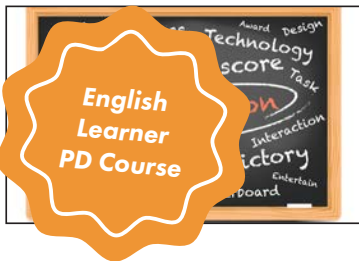


Writing Workshop: Essentials for Elementary Educators

The best way to learn about writing workshop is through writing workshop. This course is designed to immerse participants in the workshop experience even as we plan and rehearse lessons and routines with our student writers in mind. Workshop is not a program; it is a structure for whole-group and small-group and one-on-one differentiated instruction to ensure that every student can reach standards for writing processes and products. This course is designed for elementary educators with or without a curricular resource.

Course dates: April 7 - May 5

*Cost: \$45 (member) or \$145 (non-member) | Available for 1 graduate credit through ASU
Facilitator: Morgan Davis (Jefferson County Education Association)*



Edpuzzle: Gamification in Class

Teachers will actively participate in online learning to further develop their understanding of how to engage students using video game theory and how to build activities that will motivate you and your students to keep learning.

Course dates: April 7 - May 5

*Cost: \$90 (member) or \$190 (non-member) | Available for 2 graduate credits through ASU
Facilitator: Caroline Davis (District Twelve Educators' Association)*



Fitness and the Brain

Exercise impacts everything from our mood to memory and even immunity. Explore the importance of aerobic exercise on brain function and development and learn strategies to easily incorporate fitness breaks in the classroom. In a job that is all-consuming at times, this course is also designed to motivate you as an educator to make your health and fitness a priority.

Course dates: April 7 - May 5

*Cost: \$45 (member) or \$145 (non-member) | Available for 1 graduate credit through ASU
Facilitator: Courtney Petros (District Twelve Educators' Association)*



Positive Mindset Habits for Teachers: 10 Ways to Reduce Stress, Increase Engagement and Reignite your Passion for Teaching

In this book study, educators will learn 10 strategies that increase their happiness, reduce their stress and enhance their passion in the classroom. The course will focus on how educational professionals can use growth mindset to use practical and tangible ways to improve their craft and bring more joy into their lives and classrooms.

Course dates: April 8 - May 5

*Cost: \$45 (member) or \$145 (non-member) | Available for 1 graduate credit through ASU
Facilitator: Stephanie Fast (Littleton Education Association)*

www.ceacopilot.org