

# COpilot

Colorado Professional Institute for Learning Online Together

COLORADO  
EDUCATION  
ASSOCIATION  
est. 1875



# [www.ceacopilot.org](http://www.ceacopilot.org)

## Spring 2025 Courses

**Enrollment opens  
November 21!**

# A bit about COpilot

Colorado teachers and education support professionals are deeply committed to every student's success. We want all students to achieve their full potential as individuals and become productive citizens who make positive contributions to society.

We believe that educators provide the stable, nurturing, inspiring environment that makes it possible to teach each student and provide individual attention to each student's learning needs. To this end, we work to ensure that every student has a qualified, caring educator.

We believe that we must change the way educators are recruited, trained, evaluated, supported, and held accountable. We believe we must raise the bar for what it means to be a quality educator by focusing on preparing new educators for the classroom, attracting and retaining educators, providing continuous, high quality professional development for all educators, and promoting effective teachers and quality educators.

We believe that COpilot is one key to achieving these core areas of professional excellence. Through expanding your learning opportunities, you will ensure that all students in Colorado public schools have the benefit of qualified, caring, committed educators throughout their school years.

***For more information or if you have questions, please contact us at [ceacopilot@coloradoea.org](mailto:ceacopilot@coloradoea.org)!***

---

## Frequently Asked Questions (FAQs):

### ***How do I sign up for a COpilot account?***

To create a COpilot account, visit [www.ceacopilot.org](http://www.ceacopilot.org), click Log In and either verify your Association membership or create a guest account. This easy process doesn't take more than 30 seconds!

### ***How much time does a class take?***

Most COpilot classes are 15 instructional hours spread over five or six weeks. Students should expect to spend about three hours per week doing class activities.

### ***Can I earn credit, clock hours, and a certificate?***

The answer is a resounding "Yes!" Nearly all of the classes on COpilot qualify for graduate credit from Adams State University. All of the classes are eligible for license renewal hours through the Colorado Department of Education. At the conclusion of each class, you will receive a certificate of completion for your records.

### ***Can I get the syllabus for the class before making a decision?***

Absolutely! Just email the Director of Learning Services, Casey Kilpatrick ([ckilpatrick@coloradoea.org](mailto:ckilpatrick@coloradoea.org)), for that information.

### ***Can my district use COpilot for its professional development?***

CEA has worked hard to make sure districts in partnership with the local association can use COpilot to run all of their professional development. We do not charge districts to use the platform. Instead, our requirement is that the district and local association reach an agreement that dictates the school district will pay members who facilitate the classes a fair stipend. For more information about this kind of opportunity, please contact Casey Kilpatrick at CEA ([ckilpatrick@coloradoea.org](mailto:ckilpatrick@coloradoea.org)).

### ***How are classes structured?***

All of our classes are fully facilitated, which means you'll have a trained CEA member leading you and teachers from across Colorado through the content. Our classes are time-bound so that the facilitation makes sense. Through using this mostly synchronous method, teachers can more easily collaborate with each other, share experiences, and receive coaching as they practice strategies in their classrooms.

# Spring 2025 Class List



## QR Codes in the Classroom

This course teaches participants how to create and implement QR codes within their classroom. Moving beyond the traditional scan and read QR codes, participants will explore utilizing QRs as an instructional tool to extend learning and build bridges in parent communication. QR codes are easily modified to all grade levels and specialties.

*Course dates: January 5 - February 4; March 30 - April 27*

*Cost: \$45 (member) or \$145 (non-member) | Available for 1 graduate credit through ASU*

*Facilitator: Michelle Arnold (Johnstown-Milliken Education Association)*



## Level Up Your Classroom

In this 6-week course, teachers will participate in online learning to further develop their understanding of gamifying lessons in the classroom grades K-12. Specific applications will be made to practice, as teachers will read and discuss reading assignments from the book Level Up Your Classroom and use their classroom as their "lab."

*Course dates: January 5 - February 16*

*Cost: \$90 (member) or \$190 (non-member) | Available for 2 graduate credits through ASU*

*Facilitators: Michelle Arnold (Johnstown-Milliken Education Association)*



## Using ChatGPT To Save Planning Time

Teachers will comprehend and utilize the tools within the ChatGPT system to decrease their lesson planning time. Teachers will be able to use the system as a thought partner for creating engaging lessons, creating assessments and rubrics, and making lesson modifications for student needs.

*Course dates: January 6 - February 9; March 3 - April 7*

*Cost: \$90 (member) or \$190 (non-member) | Available for 2 graduate credits through ASU*

*Facilitator: Edmond Bedu-Annan (District Twelve Educators' Association)*



## Creative Classrooms: Drab to Fab Through Design

Welcome to Creative Classrooms: Drab to Fab Through Design, a cutting-edge professional development course tailored for adult educators who wish to transform their classrooms into more engaging, aesthetically pleasing, and conducive learning environments through the principles of interior design. This course delves into the symbiotic relationship between interior design and educational outcomes, offering educators practical strategies to enhance student learning, attention, and well-being.

*Course dates: January 6 - February 9*

*Cost: \$90 (member) or \$190 (non-member) | Available for 2 graduate credits through ASU*

*Facilitator: Edmond Bedu-Annan (District Twelve Educators' Association)*



## From Sounds to Sentences: Exploring the Structures of Language

Teachers will actively participate in online learning to further develop their understanding of the five basic components of language and how humans acquire language. This course offers an in-depth exploration of the five fundamental language structures: phonology, morphology, syntax, semantics, and pragmatics. Specific applications will be made to practice, as teachers take their learning into their classrooms. Through readings, discussions, and application of practice, teachers will develop a deeper appreciation for the complexity of language. This course is appropriate for educators who are linguistic enthusiasts.

*Course dates: January 6 - February 16; February 17 - April 6*

*Cost: \$90 (member) or \$190 (non-member) | Available for 2 graduate credits through ASU*

*Facilitator: Melanie Dershem (Aurora Education Association)*



English  
Learner  
PD Course

## Comprehension Strategies Using Peardeck

Educators will actively participate in online learning to further develop their understanding of various comprehension strategies to engage specialized populations within the classroom. The application of Peardeck will incorporate comprehension strategies related to the educator's specific content area to create an engaging and interactive learning environment. Educators will learn how to utilize specific tools within Peardeck to reach students who are ELL, LD, etc.

*Course dates: January 6 - February 2*

*Cost: \$90 (member) or \$190 (non-member) | Available for 2 graduate credits through ASU*

*Facilitator: Caroline Davis (District Twelve Educators' Association)*



English  
Learner  
PD Course

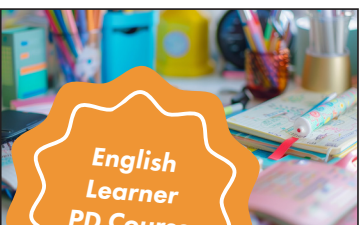
## Edpuzzle: Gamification in Class

Teachers will actively participate in online learning to further develop their understanding of how to engage students using video game theory and how to build activities that will motivate you and your students to keep learning.

*Course dates: January 6 - February 2*

*Cost: \$90 (member) or \$190 (non-member) | Available for 2 graduate credits through ASU*

*Facilitator: Caroline Davis (District Twelve Educators' Association)*



English  
Learner  
PD Course

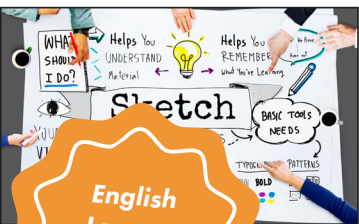
## Using Visuals to Teach English Language Learners

Do your students struggle with note taking? Do they doodle in class? Do you use way too many photocopies to teach a concept? Then visual notetaking may be a valuable skill to move your students into 21st century learning. Using visuals is an effective, research-based method for teaching English language learners (ELLs) as well as their fellow classmates. Visuals support essential information and put classwork into a context that can make learning more understandable and comprehensible.

*Course dates: January 6 - February 9; February 17 - March 30*

*Cost: \$135 (member) or \$235 (non-member) | Available for 3 graduate credits through ASU*

*Facilitator: Colleen Dowling (District Twelve Educators' Association)*



English  
Learner  
PD Course

## Sketchnoting: Enhancing Learning Through Visual Notetaking

Visual notetaking or sketchnotes is a valuable skill to move your students into 21st century learning. Sketchnoting was created by artist Mike Rhode. He was unable to concentrate while at meetings and in class so he came up with a form of purposeful doodling. Sketchnotes don't require artistic skills, they develop skills to visually synthesize and summarize via shapes, connectors, and text. Sketchnotes are as much a method of note taking as they are a form of creative expression. You will be able to differentiate your instruction and find a valuable new way to assess your students with visual notes.

*Course dates: January 6 - February 2; February 3 - March 9*

*Cost: \$90 (member) or \$190 (non-member) | Available for 2 graduate credits through ASU*

*Facilitator: Colleen Dowling (District Twelve Educators' Association)*



English  
Learner  
PD Course

## Utilizing Structured Academic Conversations in the Classroom to Foster Critical Thinking & Content Understanding

"Academic conversations are back-and-forth dialogues in which students focus on a topic and explore it by building, challenging, and negotiating relevant ideas." In this course, teachers will actively participate in online learning to further develop their understanding and application of Structured Academic Conversations in the Classroom and how to utilize Structured Conversations to Support CLD Students. Teachers will identify what is and what is not Academic Discourse, understand the importance and power of utilizing Academic Discourse in the Classroom, apply specific strategies for different lesson elements, reflect on and discuss their experiences with other teachers, and ultimately develop an Action Plan for how to utilize Academic Discourse in their teaching practices.

*Course dates: January 6 - March 1*

*Cost: \$135 (member) or \$235 (non-member) | Available for 3 graduate credits through ASU*

*Facilitator: Ian Evans (District Twelve Educators' Association)*





## Educator Bandwidth: How to Reclaim Your Energy, Passion and Time

In this book study, educators will focus on the latest neuroscience research as it pertains to the most effective strategies and habits that help you manage your mental bandwidth and prioritize drains on mental energy. Educators will focus on six key factors that contribute to their bandwidth: balancing their priorities, filtering through possibilities, mental habits that improve focus, physical habits that fuel the brain, connection with others and workload and time management. By establishing good habits, focusing on what's possible within your locus of control, and balancing priorities, educators can improve their bandwidth and feel more engaged, centered, and become more effective in their work.

*Course dates: January 6 - February 2; March 31 - April 27*

*Cost: \$45 (member) or \$145 (non-member) | Available for 1 graduate credit through ASU*

*Facilitator: Stephanie Fast (Littleton Education Association)*



**Behavioral/  
SPED Course**

**English  
Learner  
PD Course**

## Building Reading Skills for Older Students (4th-12th) Who Struggle: Strategies for Supporting Intervention, Special Education, and Multilingual Learners

In this class we will focus on 4 action oriented research based recommendations from the IES (Institute of Education Sciences, March 2022). We'll learn specific ways to effectively use them in our practice to support struggling readers. The research is based on students in 4th-9th graders, but strategies are appropriate for high school teachers as well. This class will include considerations for diverse populations of students who struggle with reading, including students with disabilities and multilingual learners.

*Course dates: January 6 - February 16; March 17 - April 27*

*Cost: \$90 (member) or \$190 (non-member) | Available for 2 graduate credits through ASU*

*Facilitator: Erin Grodeska (Aurora Education Association)*



**Behavioral/  
SPED Course**

**English  
Learner  
PD Course**

## Elementary MATH Intervention - Research Based Strategies for Supporting Learners who Struggle

Utilizing high leverage instructional practice to support our elementary students in becoming proficient mathematicians is critical to stop the widening achievement gap. In this class, we will focus on six action oriented, research based recommendations from the IES (Institute of Education Sciences, March 2021) We'll learn specific ways to effectively implement them in our practice to support struggling learners. The research is based on students in Kindergarten through 6th grade in an intervention setting. While the focus of this class is on instructional strategies for math intervention, the guidance outlined are great practices for all instructional settings. This class will include unique considerations for diverse populations of students who struggle with math concepts, including students with disabilities and multilingual learners.

*Course dates: January 6 - February 16*

*Cost: \$90 (member) or \$190 (non-member) | Available for 2 graduate credits through ASU*

*Facilitator: Erin Grodeska (Aurora Education Association)*



## Creative Confidence: Unleashing the Creative Potential Within Us All

Discover the transformative potential of creative confidence in this 8-week course designed to unleash your innate creativity. Grounded in the principles outlined in *Creative Confidence* by Tom Kelley and David Kelley, this course explores how fostering creative confidence can enhance both personal and professional development. Throughout the course, you will delve into foundational concepts such as overcoming fear of failure, cultivating empathy, applying design thinking, and fostering collaborative creativity. Learners will engage with readings, videos, and hands-on assignments that encourage practical application and reflection.

*Course dates: January 6 - March 2; March 3 - April 28*

*Cost: \$135 (member) or \$235 (non-member) | Available for 3 graduate credits through ASU*

*Facilitator: Lindsay Johnson (Eagle County Education Association)*



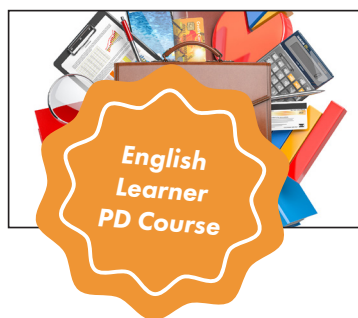
## Kids These Days: A Game Plan for (Re)Connecting with Those We Teach, Lead, & Love

The essence of this book is centered around the reminder that teachers need to be okay first in order to be the best teachers they can be for their students. The students need those teachers who are struggling now more than ever. We are teaching in some of the most difficult times in educational history. Not only students but teachers are more disconnected than ever before. Dr. Jody Carrington will take you on a journey through reconnection and regulation with your students and yourself. This course is for those who need a reminder that the work they are doing is important and it matters. You are changing lives. You are making a difference. This course will allow you to reflect deeply on your teaching practices, analyze emotional regulation, strengthen your relationship-building with students, develop and utilize strategies to get you through the tough times, remember your WHY, and help you navigate some of the toughest times we are facing as teachers. It will help you reconnect with yourself as a professional and with your students.

*Course dates: January 6 - March 2*

*Cost: \$135 (member) or \$235 (non-member) | Available for 3 graduate credits through ASU*

*Facilitator: Michelle Hagerman (Mesa Valley Education Association)*



## Building Digital Portfolios for Student Success

This six-week course provides educators of all grade levels and content areas with the tools and strategies to create impactful digital portfolios, enabling students to showcase learning, growth, and achievements. Participants will explore platform options, design structures, and develop a framework that aligns with their teaching philosophy while incorporating multimedia and student work samples. Through a combination of readings, videos, discussions, and assignments, educators will gradually build a digital portfolio that highlights key sections and formative assessments, which can be adapted for various educational settings. By the end of the course, participants will have a fully functional portfolio that serves as a model for students, fostering digital literacy, self-reflection, and engagement across diverse learning environments.

*Course dates: January 6 - February 17*

*Cost: \$90 (member) or \$190 (non-member) | Available for 2 graduate credits through ASU*

*Facilitator: Lindsay Johnson (Eagle County Education Association)*



## Brain Development & the Impact of Trauma

Course participants will actively participate online to learn about typical brain development. Through the coursework, participants will then begin to learn about trauma and the impact it has on brain development with a specific focus on learning. Connections to the classroom will also be offered to help participants reflect on their practice and think of how they can implement trauma-informed practices within their work environment for student success.

*Course dates: January 6 - February 10; March 3 - April 7*

*Cost: \$90 (member) or \$190 (non-member) | Available for 2 graduate credits through ASU*

*Facilitator: Heather Jung (Denver Classroom Teachers' Association)*



## Understanding Executive Function & the Science of Motivation

Executive Functions (EF) lay the foundation for the development of critical life skills throughout one's life. For students, these skills are necessary for learning, dealing with peer pressure & conflict, problem-solving, handling emotions, setting goals and so much more. Through this course, participants will learn how executive function skills and motivation form through brain development, define what EF skills are, and understand their importance. This course will also look at some common disorders seen in schools that can impact EF (ex. ADHD, ASD, Anxiety) as more students are needing EF supports through IEPs and 504s.

*Course dates: January 6 - February 10; March 3 - April 7*

*Cost: \$135 (member) or \$235 (non-member) | Available for 3 graduate credits through ASU*

*Facilitator: Heather Jung (Denver Classroom Teachers' Association)*



## Anger Management for Educators

Anger is a normal emotion that everyone feels from time to time. This class, with the aid of *The Cognitive Behavioral Workbook for Anger: A Step-By-Step Program for Success*, will help you to use a variety of tools, exercises, and self-mastery methods to overcome destructive anger. You will be able to recognize and overcome anger triggers, extinguish anger in the heat of the moment, stop the cycle of blame, tolerate negative emotions, deal with difficult people, and repair broken relationships.

*Course dates: January 6 - February 16; March 17 - April 27*

*Cost: \$135 (member) or \$235 (non-member) | Available for 3 graduate credits from ASU*

*Facilitator: Catherine Lee (District Twelve Educators' Association)*



## Ask Powerful Questions: Create Conversations That Matter

By changing the way we ask questions, we can transform conversations in a way that will allow us to truly see, hear, and understand where those around us are coming from. The book *Ask Powerful Questions: Create Conversations that Matter* will help you to lay the foundation for trust, psychological safety, productivity, impact, and a culture of connection.

*Course dates: January 6 - February 16; March 17 - April 27*

*Cost: \$135 (member) or \$235 (non-member) | Available for 3 graduate credits through ASU*

*Facilitator: Catherine Lee (District Twelve Educators' Association)*



## Take Time for You: Self-Care Action Plans for Educators

As educators, we tend to put ourselves last. It is important to make ourselves a priority so that we can lead a healthier and happier life. It will allow us to then be the best versions of ourselves in and outside of the classroom. In the book *Take Time for You: Self Care Action Plan for Educators*, you will create a plan each week to make sure you are taking care of yourself by meeting each of the six levels of Maslow's hierarchy of needs. These needs are as follows: (1) physiological, (2) safety, (3) belonging, (4) esteem, (5) self-actualization, and (6) transcendence.

*Course dates: January 6 - February 16; February 17 - March 30*

*Cost: \$135 (member) or \$235 (non-member) | Available for 3 graduate credits from ASU*

*Facilitator: Catherine Lee (District Twelve Educators' Association)*



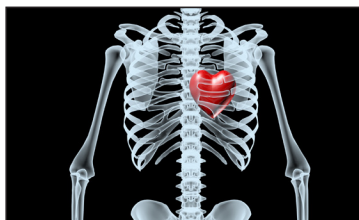
## A Practical Guide for Equity in the Classroom

This course aims to empower educators to become agents of change by equipping them with knowledge, tools, and a critical mindset necessary to foster a more equitable educational environment. It emphasizes not only understanding the complexities of equity but also taking proactive steps to create inclusive and supportive learning environments for all students.

*Course dates: January 6 - January 31*

*Cost: \$90 (member) or \$190 (non-member) | Available for 2 graduate credits through ASU*

*Facilitator: Amanda McIntyre (District Twelve Educators' Association)*



## What My Bones Know: A Memoir of Healing from Complex Trauma

As educators, we tend to put ourselves last. It is important to make ourselves a priority so Teachers, special service providers, and/or school professionals will gain a deeper understanding of what trauma is and looks like, what a diagnosis of Post Traumatic Stress Disorder (PTSD) means, and how trauma changes an individual's DNA. Learners will explore ways to heal from trauma and ways to support students when they have experienced trauma.

*Course dates: January 6 - February 16; February 17 - March 30*

*Cost: \$45 (member) or \$145 (non-member) | Available for 1 graduate credit from ASU*

*Facilitator: Kaitlyn Murdoch (Cherry Creek Education Association)*





## Mindfulness for Educators

This program is a holistic training for educators and members of the learning community. The sessions and materials help deliver yoga and mindfulness essentials to beginners and experienced practitioners. While participants are always welcome to delve deeper into any of the areas we cover, we aim to deliver a sampling of different styles of yoga and meditation so that students can experience some of the options available to them while creating a long relationship with yoga, meditation, self-care and mindfulness.

*Course dates: January 6 - February 14*

*Cost: \$135 (member) or \$235 (non-member) | Available for 3 graduate credits through ASU*

*Facilitator: Jan Pratt (Colorado Education Association - Retired)*



## Yoga in the Classroom

Participants will explore ways to bring yoga into the classroom to help students learn to combine breath and movement in a school setting. Yoga provides a great opportunity to learn brain breaks that are movement based while also incorporating balance, breath, coordination and self awareness.

*Course dates: January 6 - February 21*

*Cost: \$135 (member) or \$235 (non-member) | Available for 3 graduate credits through ASU*

*Facilitator: Jan Pratt (Colorado Education Association - Retired)*



## The Body Keeps the Score: Brain, Mind, Body in the Healing of Trauma

Teachers will explore what trauma is and looks like, how it might present in the population, and how trauma has the ability to reshape the body and brain, compromising the sufferer's capacities for pleasure, engagement, self-control and trust. The book then explores innovative treatment options that can help activate the brain's neuroplasticity.

*Course dates: January 6 - February 21*

*Cost: \$90 (member) or \$190 (non-member) | Available for 2 graduate credits through ASU*

*Facilitator: Jan Pratt (Colorado Education Association - Retired)*



## Time Management for the Educator, Counselor, and Administrator

Can't find the time for a moment to yourself? Feeling pressured and like you need to reset? This class gives you a set of strategies to help you make sure you're taken care of so you can take care of others in your important role in education.

*Course dates: January 6 - February 2; February 3 - March 2*

*Cost: \$90 (member) or \$190 (non-member) | Available for 2 graduate credits through ASU*

*Facilitator: Elizabeth Sedalnick (District Twelve Educators' Association)*



## Social Skills: The Lost Art

Social skills are so important to have to be able interact with others. Unfortunately, as a culture with the introduction of social media, we have been losing this skill. This course introduces skills that can be used with students, and to try yourself! Helping our students be able interact with each other will carry through their lives and help them to be more successful.

*Course dates: January 6 - February 2*

*Cost: \$90 (member) or \$190 (non-member) | Available for 2 graduate credits through ASU*

*Facilitator: Elizabeth Sedalnick (District Twelve Educators' Association)*



## The Boy Who Raised as a Dog Book Study

We will do a book study on *The Boy Who Was Raised as a Dog* to discuss trauma, how it affects children, and how we as educators can understand this and provide simple ideas to use in our relationships with all kids.

*Course dates: January 6 - February 9*

*Cost: \$45 (member) or \$145 (non-member) | Available for 1 graduate credit through ASU*

*Facilitator: Jenny Shoen (Littleton Education Association)*





### English Learner PD Course

## Sold a Story: How the Three Cueing System has Failed Readers

Throughout this course, students will listen to six episodes of a Podcast called, "Sold a Story" by journalist Emily Hanford. She brings in multiple interviews from parents, educators, students and even Lucy Calkins, "the reading guru", to help us better understand the why behind the sudden urgency to change how we teach reading. Teachers will also read a variety of texts to help support the sudden shift and the science behind how this was a flawed system.

*Course dates: January 6 - February 21*

*Cost: \$90 (member) or \$190 (non-member) | Available for 2 graduate credits through ASU*

*Facilitator: Danielle Vinton (District Twelve Educators' Association)*



## Personal Financial Literacy for Colorado Educators: Making the Most of Your PERA Pension, Employer Benefits, and Investments

Being an educator is a very difficult job. It's even more difficult if you're worried about your personal financial situation. Many educators are confused and/or intimidated by finances, and "don't know what they don't know". This stress can't help but impact their job performance. So this class is designed to not only make a difference in your personal lives, but if it can help you relieve that stress, it will make you even better educators and do an even better job of meeting the needs of our students in these challenging times. This class will also help prepare you to better teach the Colorado Academic Standards for K-12 Personal Financial Literacy (PFL).

*Course dates: January 10 - March 2; January 13 - March 2; March 17 - May 4*

*Cost: \$135 (member) or \$235 (non-member) | Available for 3 graduate credits through ASU*

*Facilitator: Karl Fisch (Colorado Education Association - Retired)*

*Facilitator: Robert Smith (Denver Classroom Teachers' Association)*



## Intro to Special Education and 504

This course will serve as a foundational introduction so that you will understand the special education and 504 processes, allowing you to become a meaningful part of your student's educational experiences. We will examine history and policy changes throughout the years to ensure you have a strong foundation in what past practices and adjustments have led us to the current process. You will learn about Child Find, RTI, and the MTSS process, which will determine the next steps in the evaluation process. This will help ensure clarity about why some students do not get evaluated. To ensure you are an informed team member and understand why students do or do not qualify for special education, We will review the 13 eligibility categories for special education and/or how a 504 may be implemented. We will review the components of an IEP, including present levels, special considerations, goals, accommodations/modifications, services, and the least restrictive environment.

*Course dates: January 12 - February 23; March 9 - April 20*

*Cost: \$45 (member) or \$145 (non-member) | Available for 1 graduate credit through ASU*

*Facilitator: Holly Lancy (Denver Classroom Teachers' Association)*



## Modeling the Way: A Deep Dive Into Your Own SEL Skills

Social emotional learning is shown to be foundational when setting the stage for academic learning. SEL leads to stronger relationships, a sense of belonging, and a more supportive learning environment. As educators, social emotional skills can also have a positive impact on our own personal and professional success. In order to effectively teach SEL, we should reflect on our own skills, acknowledge where we're at, and continue to expand these practices. Doing this allows us to best model and teach those skills to our students. This course will look at CASEL's five core competencies.

*Course dates: January 13 - February 16*

*Cost: \$90 (member) or \$190 (non-member) | Available for 2 graduate credits through ASU*

*Facilitator: Stacie Albi (District Twelve Educators' Association)*



## The Leader Within: Who Am I?

Leaders influence. They set the stage for others to flourish and perform to their potential. Being a leader starts with knowing yourself. This requires an understanding of your strengths, weaknesses, values, beliefs, motivations, and desires. In this course, you will discover what motivates you and how you work best. This is the first step in becoming the leader you are capable of being. Once you understand who you are, not who others think you are, you are ready to lead and inspire others to their own greatness. There is a leader inside everyone; it's time to discover it.

*Course dates: January 13 - February 16*

*Cost: \$90 (member) or \$190 (non-member) | Available for 2 graduate credits through ASU*

*Facilitator: Stacie Albi (District Twelve Educators' Association)*



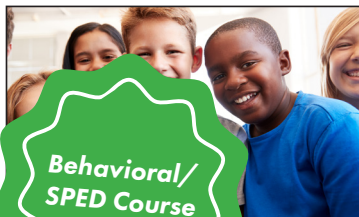
## Set Boundaries, Find Peace

Feeling burnt out, unappreciated, overwhelmed? Setting boundaries is an essential skill for maintaining healthy relationships and promoting personal well-being. In this course based on the book "Set Boundaries, Find Peace" by Nedra Glover Tawwab you will learn how to establish and maintain healthy boundaries in your personal and professional environments to improve the quality of your life.

*Course dates: January 13 - February 15; March 10 - April 12*

*Cost: \$135(member) or \$235(non-member) | Available for 3 graduate credits through ASU*

*Facilitator: Larisa Baskin (Aurora Education Association)*



## How the Special Needs Brain Learns

Students with special needs learn in unique ways. While reading *How the Special Needs Brain Learns*, Dr. David A. Sousa will guide you through an overview of the special needs brain, including the anatomy and physiology of the brain and its ability to learn, process information, and store memories. We will cover topics such as the role of emotions in learning, the importance of positive reinforcement, and the use of technology in the classroom. Additionally, the book provides strategies and activities that can be used to help students with special needs reach their full potential.

*Course dates: January 13 - March 2; March 17 - May 4*

*Cost: \$135 (member) or \$235 (non-member) | Available for 3 graduate credits through ASU*

*Facilitator: Sarah Beiriger (Jefferson County Education Association)*



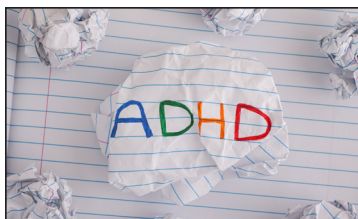
## Full STEAM Ahead: Math Art with Desmos!

Teachers will create STEAM activities for their classroom using the Desmos math graphing calculator to create art! This course is appropriate for secondary teachers of art and math, and any teacher that wants to incorporate STEAM and cross-curricular activities into their lessons. DESMOS is a beautiful and user-friendly graphing tool that can be used to deepen an intuitive understanding of math and to experience the art in math and the math in art! Let's make learning engaging and fun! You will leave this class with a cross-curricular STEAM activity you can use right away in your classes!

*Course dates: January 13 - February 16*

*Cost: \$90 (member) or \$190 (non-member) | Available for 2 graduate credits through ASU*

*Facilitator: Riana Bichler (Mesa Valley Education Association)*



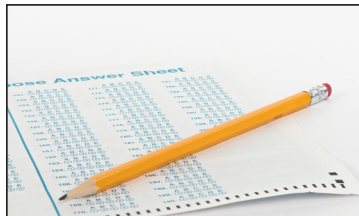
## ADHD Is Awesome

Why is ADHD Awesome? Find out in this book study, where teachers will actively participate in online learning to further develop their understanding of the lived experience of ADHD and reflect upon creative ways to empower and support their students with ADHD.

*Course dates: January 13 - February 16; March 31 - May 4*

*Cost: \$90 (member) or \$190 (non-member) | Available for 2 graduate credits through ASU*

*Facilitator: Riana Bichler (Mesa Valley Education Association)*



## ANCHORS AWAY: Set Sail For SAT Prep

Teachers will take the helm as they steer their students toward a successful SAT season. On this adventure, teachers will learn how to set up and run an SAT test prep course through Khan Academy after they review the practice test through the SAT Blue Book, as well as work to develop a personalized classroom unit plan, to help navigate through the new digital test and get their students' test performance in ship-shape!

*Course dates: January 13 - February 16*

*Cost: \$90 (member) or \$190 (non-member) | Available for 2 graduate credits through ASU*

*Facilitator: Riana Bichler (Mesa Valley Education Association)*



## Motivational Interviewing: Strategies for Fostering Student Change & Motivation

Learners will develop their understanding of the basic principles of Motivational Interviewing, instructional strategies, and classroom implementation of Motivational Interviewing skills that will foster student change and motivation in the classroom. Motivational Interviewing is a counseling technique aimed to reduce student ambivalence and inspire students to change their behaviors. This course will provide skills for school staff to effectively encourage student growth, increase skills of additive empathy, guide students towards real change, encourage motivation in the school setting, and how to recognize the different stages of change with targeted interventions.

*Course dates: January 13 - February 9; March 3 - March 31*

*Cost: \$45 (member) or \$145 (non-member) | Available for 1 graduate credit through ASU*

*Facilitator: Danielle Chevalier (Greeley Education Association)*



## The Anxious Generation: Insights for Educators

In "The Anxious Generation" social psychologist Jonathan Haidt explores the mental health challenges affecting today's children because of the decline of play-based childhoods since the 1980s—replaced by a phone-based culture in the 2010s. This course invites educators to examine the research surrounding rising levels of anxiety and depression in students, focusing on the cultural and developmental factors at play. Through collaborative discussions and practical applications, educators will develop a comprehensive action plan to support their students with the added benefit of enhancing their own well-being.

*Course dates: January 13 - March 9*

*Cost: \$135 (member) or \$235 (non-member) | Available for 3 graduate credits through ASU*

*Facilitator: Ahsley Girodo (Summit County Education Association)*



## The Gifted Guild's Guide to Depth and Complexity: Finding Your Way Through the Framework

Are you ready to elevate your classroom and foster high-performing students through enhanced critical thinking skills in any content area? This course provides in-depth exploration of strategies using the Depth and Complexity framework. Participants will engage in hands-on activities and practical techniques designed to boost critical thinking, promoting deeper student engagement and mastery across subjects. Ideal for educators seeking to advance their instructional practices and challenge students to think critically at a higher level.

*Course dates: January 13 - March 9*

*Cost: \$90 (member) or \$190 (non-member) | Available for 2 graduate credits through ASU*

*Facilitator: Rachel Graham (Estes Park Education Association)*

**All class dates are subject to change based on facilitator availability. All classes are subject to cancellation if fewer than five students enroll by the official class start date.**





## The Knowledge Gap: The Hidden Cause of America's Broken Education System--and How to Fix It

"The Knowledge Gap" by Natalie Wexler has sparked important conversations about educational equity and the role of content-rich curriculum in closing achievement gaps. This professional development course is designed for teachers who want to deepen their understanding of these issues and explore practical strategies for implementing change in their classrooms and schools. Throughout this course, participants will engage in discussions and activities that delve into the key themes of "The Knowledge Gap," including the importance of background knowledge, the impact of literacy instruction, and the role of curriculum in shaping student outcomes.

*Course dates: January 13 - March 9*

*Cost: \$135 (member) or \$235 (non-member) | Available for 3 graduate credits through ASU*

*Facilitator: Katie Guerrero (Cherry Creek Education Association)*



## Doable Differentiation: 12 Strategies to Meet the Needs of All Learners

Don't think it's possible to differentiate for all students throughout the day? Doable Differentiation: 12 Strategies to Meet the Needs of All Learners is a book study that supports and teaches educators ways to differentiate for all students in a class. It expands understanding about what differentiation is, why we do it, and why it is actually possible throughout the day. We will create lesson plans to implement these in an authentic way to your class. We will reflect collectively. And we will learn how to be even more inclusive, engaging, and individualized educators!

*Course dates: January 13 - February 10; March 3 - April 7*

*Cost: \$90 (member) or \$190 (non-member) | Available for 2 graduate credits through ASU*

*Facilitator: Ellie Lucy (Denver Classroom Teachers' Association)*



## The Writing Revolution: Creating Proficient Writers, Readers, and Critical Thinkers

Teachers will read the text *The Writing Revolution 2.0* by Judith C. Hochman and Natalie Wexler and learn about the evidence-based Hochman Method of writing. Participants will develop strategies and activities to incorporate into any curriculum, grade level, and content instruction to strengthen students' expository writing. Throughout the course, participants will learn how to build students' writing skills at the sentence level, and the paragraph level, develop note-taking strategies, and help students revise and summarize. For the final assignment, teachers will analyze students' writing work and create a lesson unit plan using the Writing Revolution strategies to meet student needs.

*Course dates: January 13 - March 9; March 10 - May 4*

*Cost: \$135 (member) or \$235 (non-member) | Available for 3 graduate credits through ASU*

*Facilitator: Katie Main (Denver Classroom Teachers' Association)*



## Educational Documentaries to Support the Classroom

Teachers, special service providers, and/or school professionals will gain a deeper understanding how we can better support our most vulnerable students by watching a variety of documentaries. Throughout the course, learners will watch three documentaries (*The Program*, *Tell Them You Love Me*, and *Lessons From a School Shooting*) on Netflix.

\*These documentaries contain stories and statistics about violence; please take care of yourself throughout this course.

*Course dates: January 13 - February 16; March 3 - April 6*

*Cost: \$90 (member) or \$190 (non-member) | Available for 2 graduate credits through ASU*

*Facilitator: Kaitlyn Murdoch (Cherry Creek Education Association)*





**Behavioral/  
SPED Course**

## Minds of All Kinds: Part 3 Broadening our Impact for Neurodivergent Learners

Minds of All Kinds: Part 3 is the culmination of a three-part series about neurodiversity in the classroom. In this class, students will dig deep into the history of Autism, explore issues of equity and inclusion in our schools, consider Autistic voices around affirming practices, and implement an action/advocacy initiative in their school, community, district, or even at the state level. This class is designed to create concrete, meaningful change for our neurodiverse learners. NOTE: ideally, students will have taken Part 1 & Part 2, however, the class is available to anyone with a strong background working with Autistic learners.

*Course dates: January 13 - April 6*

*Cost: \$135 (member) or \$235 (non-member) | Available for 3 graduate credits through ASU*  
*Facilitator: Jessica Moore (St. Vrain Valley Education Association)*



## Advanced Google Sheets

In this course, teachers will actively participate in online learning to provide educators with advanced skills in Google Sheets to differentiate learning, analyze assessment data, enhance student/teacher communication with ELD and IS support, planning, and more. Participants will learn how to use coding, formulas, and Sheets' features to create powerful data tools and automate repetitive tasks. Participants will also explore strategies for effective data analysis and communication with students, parents, and colleagues.

*Course dates: January 13 - February 16*

*Cost: \$90 (member) or \$190 (non-member) | Available for 2 graduate credits through ASU*  
*Facilitator: Brittany Osborn (Poudre Education Association)*



**English  
Learner  
PD Course**

## Building Thinking Classrooms in Mathematics

In this 8-week book study course we will be discovering the magic of "Building Thinking Classrooms in Mathematics, Grades K-12" by Peter Liljedahl. Participants will explore the 14 teaching practices aimed at fostering a thinking-centered approach to mathematics instruction. Through reading, reflection, discussions, and assignments, participants will gain insights and practical strategies to enhance their teaching practices and create a classroom environment that promotes student engagement, problem-solving skills, and mathematical thinking.

*Course dates: January 13 - March 9*

*Cost: \$135 (member) or \$235 (non-member) | Available for 3 graduate credits through ASU*  
*Facilitator: Brittany Osborn (Poudre Education Association)*

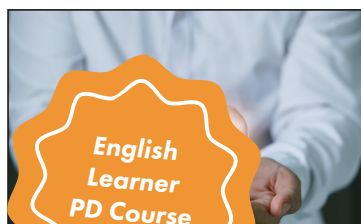


## Canva in the Classroom

Teachers will participate in online learning to explore how to use Canva for Education, a powerful graphic design and interactive collaborative platform, to enhance your classroom teaching and planning. Participants will first explore what Canva offers, how it works and then learn how to create visually appealing classroom materials, such as posters, flyers, handouts, and presentations. We will explore how to establish a classroom to keep your students' participation and collaboration in one place as well as integrating it into your current LMS.

*Course dates: January 13 - March 9; March 10 - May 4*

*Cost: \$135 (member) or \$235 (non-member) | Available for 3 graduate credits through ASU*  
*Facilitator: Brittany Osborn (Poudre Education Association)*



**English  
Learner  
PD Course**

## Genius Hour: A Choice-based Professional Development for Educators

In this 8-week professional development course, educators will explore their passions through the Genius Hour approach, setting and pursuing SMART goals for individual projects. Participants will choose their own texts to read, tailoring the experience to their professional development journey and what they are passionate in learning more about.

*Course dates: January 13 - March 9*

*Cost: \$135 (member) or \$235 (non-member) | Available for 3 graduate credits through ASU*  
*Facilitator: Brittany Osborn (Poudre Education Association)*



## The Playful Classroom: The Power of Play for All Ages

In this class, participants will learn about play in the classroom! You will study the research behind play and how it affects the brain, social skills, increase in productivity and self esteem, decrease in student behaviors and so much more. You will apply lessons from the text and our online activities in your own classrooms as a lab where you get to try all sort of new play-based strategies with students.

*Course dates: January 13 - March 9; February 3 - March 30*

*Cost: \$90 (member) or \$190 (non-member) | Available for 2 graduate credits through ASU*

*Facilitator: Barb Pedrett (Cherry Creek Education Association)*



## Read & Write for Education: Using the Assistive Technology Tool for Instruction and Learning

Educators will learn how to use and apply the powerful assistive technology tool, Read&Write for Education. The literacy support tool includes applications for reading comprehension, vocabulary, written expression, and research. Educators will actively participate in applying the tools for instruction as well as develop accommodations for student learning.

*Course dates: January 13 - February 9*

*Cost: \$45 (member) or \$145 (non-member) | Available for 1 graduate credit through ASU*

*Facilitator: Erin Trendler (Boulder Valley Education Association)*



## 7 Mighty Moves: Research-Backed, Classroom-Tested

### Strategies to Ensure K-3 Reading Success

In this class, participants will learn about play in the classroom! You will study the research behind play and how it affects the brain, social skills, increase in productivity and self esteem, decrease in student behaviors and so much more. You will apply lessons from the text and our online activities in your own classrooms as a lab where you get to try all sort of new play-based strategies with students.

*Course dates: January 13 - March 10; March 10 - May 2*

*Cost: \$90 (member) or \$190 (non-member) | Available for 2 graduate credits through ASU*

*Facilitator: Christina Whitted (Aurora Education Association)*



## Trauma Sensitive School Leadership for Teachers and School Leaders

Teachers and leaders will examine biases and barriers that prevent schools from addressing trauma, how to take steps to avoid retraumatizing students, practices to embrace and support solution based approaches, how teachers and leaders can design an environment for support around caring and mindset and how teachers and leaders can support supervisees and colleagues to avoid secondary trauma.

*Course dates: January 13 - February 17*

*Cost: \$45 (member) or \$145 (non-member) | Available for 1 graduate credit through ASU*

*Facilitator: Emily Mulvihill (Colorado Spring Education Association)*



## Balanced Educator: A Holistic Approach to Wellbeing for Sustained Success

In this course, we embark on a journey to empower educators through a comprehensive exploration of wellness strategies. Delve into the intricacies of physical, mental, emotional, and social wellbeing, as we provide practical tools and insights tailored specifically for the demands of the education profession. We'll uncover the importance of self-care practices, stress management techniques, and mindfulness exercises to enhance resilience and vitality. From nurturing healthy habits to fostering supportive communities, discover how to create a balanced lifestyle that promotes both personal and professional fulfillment.

*Course dates: January 14 - February 18*

*Cost: \$45 (member) or \$145 (non-member) | Available for 1 graduate credit through ASU*

*Facilitator: Julie Arnold (Johnstown-Milliken Education Association)*



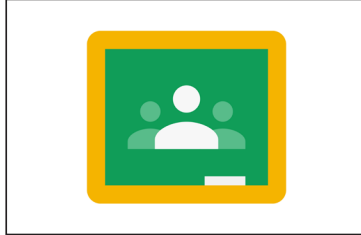
## Routines for Success in the Classroom and in Life

The book study will engage participants in reflection, planning and implementation of transformative practices that will lead to more purposeful and engaged classrooms and professional learning teams. Participants will collaboratively discuss strategies and techniques for effectively engaging students within the school culture through self-reflection and character building.

*Course dates: January 20 - February 16*

*Cost: \$45 (member) or \$145 (non-member) | Available for 1 graduate credit through ASU*

*Facilitator: Amy Bohlen (Westminster Education Association)*



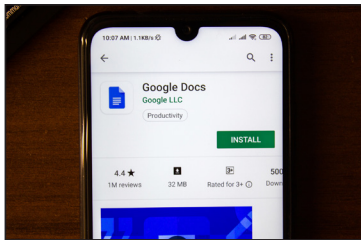
## Google Classroom Basics

Teachers will engage in online learning to initiate and/or continue to develop their basic understanding of Google Classroom. The focus will be on skills that will enable teachers to create, distribute, and grade assignments and formative assessments. Teachers will investigate integrating curriculum, and other resources into their announcements, assignments, formative assessments, and the utilization of the "Share to Classroom" Chrome extension. This class has been designed for teachers new to Google Classroom. If you are an experienced Google Classroom user, we suggest looking at taking the Google Classroom Practice Sets or Google Level I/II Certification courses.

*Course dates: January 20 - February 16*

*Cost: \$45 (member) or \$145 (non-member) | Available for 1 graduate credit through ASU*

*Facilitator: Elissa Brost (Colorado Springs Education Association)*



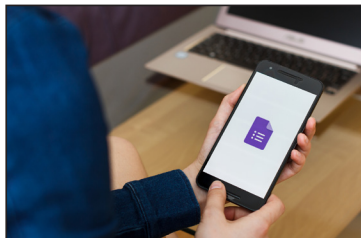
## Google Docs Basics

Educators will engage in online learning to initiate and/or continue to develop their basic understanding of Google Docs. The focus will be on skills that will enable teachers to create, distribute, and collaborate with colleagues and students using Google Docs. Educators will learn to utilize all basic features of Google Docs for both professional use and as a workshop model in the Google Classroom with students.

*Course dates: January 20 - February 16*

*Cost: \$45 (member) or \$145 (non-member) | Available for 1 graduate credit through ASU*

*Facilitator: Elissa Brost (Colorado Springs Education Association)*



## Google Forms Basics

Educators will engage in online learning to initiate and/or continue to develop their basic understanding of Google Forms. The focus will be on skills that will enable teachers to create, distribute, and grade Forms utilized as formative assessments. Educators will investigate integrating curriculum, and other resources into their Forms, polling/survey features, and more. Specific focus will be how to utilize Google Forms in a Google Classroom.

*Course dates: January 20 - February 16*

*Cost: \$45 (member) or \$145 (non-member) | Available for 1 graduate credit through ASU*

*Facilitator: Elissa Brost (Colorado Springs Education Association)*



## Google Sheets Basics

Educators will engage in online learning to initiate and/or continue to develop their basic understanding of Google Sheets. The focus will be on skills that will enable teachers to create, distribute, and collaborate with colleagues and students using Google Sheets. Educators will learn to utilize all basic features of Google Sheets for both professional use and as a workshop model in the Google Classroom with students.

*Course dates: January 20 - February 16*

*Cost: \$45 (member) or \$145 (non-member) | Available for 1 graduate credit through ASU*

*Facilitator: Elissa Brost (Colorado Springs Education Association)*





## Google Sites Basics

Teachers will engage in online learning to initiate and/or continue to develop their basic understanding of Google Sites. The focus will be on skills that will enable teachers to create and distribute a Google Site. Teachers will plan, organize, create, enhance, and modify a Google Site as a classroom resource to inform and communicate with students/families/staff.

*Course dates: January 20 - February 16*

*Cost: \$45 (member) or \$145 (non-member) | Available for 1 graduate credit through ASU*

*Facilitator: Elissa Brost (Colorado Springs Education Association)*



## Google Slides Basics

Educators will engage in online learning to initiate and/or continue to develop their basic understanding of Google Slides. The focus will be on skills that will enable teachers to create, distribute, and collaborate with colleagues using Google Slides. Teachers will learn to work beyond standard templates, creating custom presentations to facilitate instruction that utilizes multiple media and presentation choices.

*Course dates: January 20 - February 16*

*Cost: \$45 (member) or \$145 (non-member) | Available for 1 graduate credit through ASU*

*Facilitator: Elissa Brost (Colorado Springs Education Association)*



**Qualifies for  
ELPD Credit**

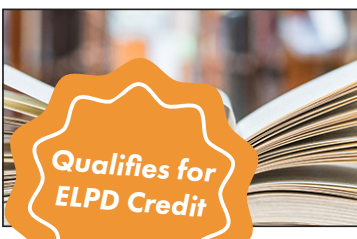
## Game Changer: Book Access for All Kids

This course is a book study of Donalyn Miller and Colby Sharp's book *Game Changer: Book Access for All Kids*. Miller is considered The Book Whisperer and has devoted her career to engaging students with books and helping them fall in love with reading. This is her third book with a bit of a new approach. "Through their own classroom experiences and those of experts in the field, Miller and Sharp provide stakeholders with tools and techniques to dramatically increase children's access to -- and life-changing engagement with-- books."

*Course dates: January 20 - February 16*

*Cost: \$45 (member) or \$145 (non-member) | Available for 1 graduate credit through ASU*

*Facilitator: Elissa Brost (Colorado Springs Education Association)*



**Qualifies for  
ELPD Credit**

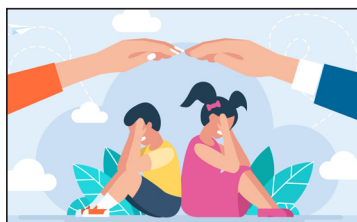
## The Book Whisperer: Awakening the Inner Reader in Every Child

This course will be a book study of Donalyn Miller's book *The Book Whisperer: Awakening the Inner Reader in Every Child*. Participants will discuss and make plans of implementation to engage a classroom of readers. Participants will also walk away with easily-applicable resources to use and/ or modify in their classroom.

*Course dates: January 20 - February 16*

*Cost: \$45 (member) or \$145 (non-member) | Available for 1 graduate credit through ASU*

*Facilitator: Elissa Brost (Colorado Springs Education Association)*



## Trauma Stewardship: An Everyday Guide to Caring for Self While Caring for Others

This course will be a book study of *Trauma Stewardship, An Everyday Guide to Caring for Self While Caring for Others*. This book uses humor, research and personal reflections to discuss symptoms people experience when being exposed to trauma and the trauma of those they help. Through reflections, readings, and journals we will gain fresh, new strategies to stay present, balance our personal and professional lives, and most importantly keep from becoming burnt out and overwhelmed. The author, Laura van Dernoot Lipsky is a trauma social worker and educator with decades of experience in helping others, who spend their careers making the world a better place.

*Course dates: January 20 - April 16*

*Cost: \$90 (member) or \$190 (non-member) | Available for 2 graduate credits through ASU*

*Facilitator: Laurie McPherson (Poudre Education Association)*





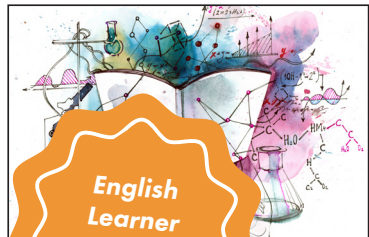
## Teaching With Poverty In Mind

Educators will actively participate in this online book study to further develop their understanding and experience in teaching students of poverty. Participants will research what being poor does to kids' brains and what schools and educators can do about it. This course is appropriate for educators of any grade/content level as well as instructional coaches, interventionists, special service providers, and administrators.

*Course dates: January 20 - February 17*

*Cost: \$45 (member) or \$145 (non-member) | Available for 1 graduate credit through ASU*

*Facilitator: Ellie Lucy (Denver Classroom Teachers' Association)*



English  
Learner  
PD Course

## The Science of Reading in Action

Educators will actively participate in online learning to further develop their understanding of the science of reading. This course will introduce and help educators understand new brain research on teaching students how to read. We will be doing a book study, researching, and creating hands-on activities with our students in our classrooms. This course is appropriate for elementary, middle school, reading intervention teachers, instructional coaches, and administrators.

*Course dates: January 20 - February 16; February 10 - March 9*

*Cost: \$45 (member) or \$145 (non-member) | Available for 1 graduate credit through ASU*

*Facilitator: Barb Pedrett (Cherry Creek Education Association)*



Behavioral/  
SPED Course

## Understanding Big Behaviors

Teachers, special service providers, and/or school professionals will actively participate in online learning to further develop their understanding of the origin of emotions, expand knowledge in the area of childhood brain development, analyze the effect of adverse childhood experiences on the brain, explore how emotions translate into behaviors, and learn how to manage big behaviors in the classroom.

*Course dates: January 20 - March 2*

*Cost: \$45 (member) or \$145 (non-member) | Available for 1 graduate credit through ASU*

*Facilitator: Shannon Shearer (Cherry Creek Education Association)*



## Advanced Google Tools: Harnessing the Power of Google Level II Certification

This course is designed to build and expand upon the learning offered in the Google Level I course. There are 11 modules for the learner to engage in at their own pace. Once the modules are complete, you will be able to prove your knowledge of the Google platform and join the ranks of Google Level II Educators around the world. The Level 2 Educator badge can be added to your resume, website, school credential, or other professional network.

*Course dates: January 20 - March 16*

*Cost: \$90 (member) or \$190 (non-member) | Available for 2 graduate credits through ASU*

*Facilitator: Robert Thompson (Colorado Education Association)*



Behavioral/  
SPED Course

## Smart But Scattered: Executive Functioning for Every Student

Unlock the secrets of executive skills in this course designed for educators while diving deep into the eleven key components of executive functioning, including planning, organization, time management, emotional regulation, and cognitive flexibility. You will gain a comprehensive understanding of these essential skills and their practical application in educational settings. Additionally, learners will discover effective strategies for identifying strengths and weaknesses in executive functioning and learn how to implement evidence-based interventions tailored to diverse student needs.

*Course dates: January 22 - March 19; March 5 - April 30*

*Cost: \$135 (member) or \$235 (non-member) | Available for 3 graduate credits from ASU*

*Facilitator: Julie Arnold (Johnstown-Milliken Education Association)*



## Literacy Strategies for the Diverse Classroom Using Edpuzzle

Teachers will actively participate in online learning to further develop their understanding of various literacy strategies to engage specialized populations within the classroom. The application of Edpuzzle will incorporate educational videos related to the teacher's specific content area to create an engaging and interactive learning environment. Teachers will learn how to utilize specific tools within Edpuzzle to reach students who are DHH, ELL, LD, etc.

*Course dates: January 27 - March 2*

*Cost: \$90 (member) or \$190 (non-member) | Available for 2 graduate credits through ASU*

*Facilitator: Caroline Davis (District Twelve Educators' Association)*



## The Classroom Behavior Manual

Positive student behaviors are desired outcomes, this course will concentrate on inputs. How do you respond to difficult behavior in the moment when you know that punitive, compliance-based behavior management is so often ineffective? What's the best way to prevent students from acting out in the first place? The path to success requires behavioral leadership, in which teachers strategically model and affirm the behaviors they want to see in students. We will be practicing weekly on what we have read and learned.

*Course dates: January 27 - February 23; February 17 - March 16*

*Cost: \$45 (member) or \$145 (non-member) | Available for 1 graduate credit through ASU*

*Facilitator: Barb Pedrett (Cherry Creek Education Association)*



## Practical Optimism for Educators

These days educators are asked to do more and put more on their plates without anything ever being taken off. The pay can stink, the kids & parents can be a pain, and walking into the staff lounge feels like a toxic tornado of sadness. It's no wonder that teachers often feel burnt out. Heck, it's easy to feel negative, but that only rubs off on your students and your colleagues making the situation worse. In this course, teachers will actively participate in online learning to further develop their knowledge & understanding of Practical Optimism and how to utilize the strategies and practices cultivated by celebrated cognitive behavioral therapist, Sue Varma, M.D. Through our studies as a class, teachers will be able to develop lesson elements and instructional strategies to support their students in practicing and building the skills of Practical Optimism in their classrooms.

*Course dates: February 2 - March 29*

*Cost: \$135 (member) or \$235 (non-member) | Available for 3 graduate credits through ASU*

*Facilitator: Ian Evans (District Twelve Educators' Association)*



## Success for Experienced Multilinguals

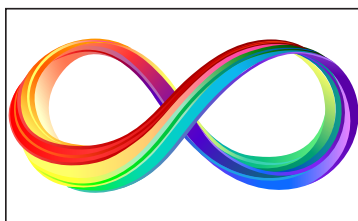
Data from regional and state agencies reveal that long-term English learners, LTEL, make up between 25 and 75 percent of all middle and high school English learners in the United States. This book study focuses on a straight-forward and easy-to-implement approach to support multilingual learners. With the end in mind, course participants will design instructions and scaffolds that will enable experienced multilinguals to be successful in all content areas.

*Course dates: February 3 - March 23; March 16 - May 4*

*Cost: \$135 (member) or \$235 (non-member) | Available for 3 graduate credits through ASU*

*Facilitator: Larisa Baskin (Aurora Education Association)*

**All class dates are subject to change based on facilitator availability. All classes are subject to cancellation if fewer than five students enroll by the official class start date.**



## I Will Die on This Hill: Autistic Adults, Autism Parents, and the Children Who Deserve a Better World

In this book study, educators will learn about the different perspectives surrounding autism spectrum disorder coming from Actually Autistic adults and parents of autistic children. Participants will gain an understanding of the impacts of the diagnosis, what supports are needed in and out of the classroom, and how to make our world a more accessible place for all. This course is appropriate for any grade level and content area, instructional coaches, special service providers, counselors and mental health teams, and administrators.

*Course dates: February 3 - March 16*

*Cost: \$90 (member) or \$190 (non-member) | Available for 2 graduate credits through ASU*

*Facilitator: Monica Beckner (Greeley Education Association)*



## Visual Thinking: The Hidden Gifts of People Who Think in Pictures, Patterns, and Abstractions

Educators will actively participate in an online book study of Temple Grandin's book, *Visual Thinking: The Hidden Gifts of People Who Think in Pictures, Patterns, and Abstractions*. Participants will increase their understanding of thinking types as well as consider the perspective of cognition in the neurodiverse population. Educators will reflect on ways to differentiate instructional practices to embrace and foster the strengths and challenges of various thinking types.

*Course dates: February 3 - March 10; March 31 - May 4*

*Cost: \$45 (member) or \$145 (non-member) | Available for 1 graduate credit through ASU*

*Facilitator: Jessica Bush (Brighton Education Association)*



## Comprehension Connections: Bridges to Strategic Reading

Teachers will gain engaging and concrete ways to teach abstract reading strategies. The book emphasizes the importance of how to make thinking visible for our students, and how to teach these strategies before students apply them to their independent reading. The book is organized into chapters based on these strategies - schema, inferring, questioning, determining importance, visualizing, and synthesizing. Each strategy has a "launching lesson" that includes a concrete item that is used as an anchor throughout the teaching of the strategy. Teachers can easily implement these lessons right away! During the course, we will also connect these strategies to supporting ELLs.

*Course dates: February 3 - March 3*

*Cost: \$45 (member) or \$145 (non-member) | Available for 1 graduate credit through ASU*

*Facilitator: Leigh Ann Eucker (Poudre Education Association)*



## Supporting Math Anxiety with SplashLearn

Teachers will gain engaging and concrete ways to teach abstract reading strategies. The book emphasizes the importance of how to make thinking visible for our students, and how to teach these strategies before students apply them to their independent reading. The book is organized into chapters based on these strategies - schema, inferring, questioning, determining importance, visualizing, and synthesizing. Each strategy has a "launching lesson" that includes a concrete item that is used as an anchor throughout the teaching of the strategy. Teachers can easily implement these lessons right away! During the course, we will also connect these strategies to supporting ELLs.

*Course dates: February 3 - March 3*

*Cost: \$45 (member) or \$145 (non-member) | Available for 1 graduate credit through ASU*

*Facilitator: Leigh Ann Eucker (Poudre Education Association)*



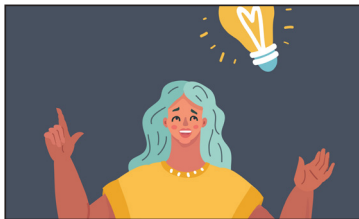


## Hacking School Discipline: 9 Ways to Create a Culture of Empathy and Responsibility based on Restorative Justice

In this book study, educators will learn 9 ways to create a culture of empathy and responsibility using restorative justice and other techniques. They will learn how to not only change behaviors by replacing traditional school discipline practices that do not work, but transform students into productive citizens, accountable for their own actions.

*Course dates: February 3 - March 2*

*Cost: \$45 (member) or \$145 (non-member) | Available for 1 graduate credit through ASU  
Facilitator: Stephanie Fast (Littleton Education Association)*



## Navigating Controversial Topics in Schools

This course explores the themes and insights presented in Jonathan Haidt's "The Righteous Mind: Why Good People Are Divided by Politics and Religion" and will apply them to the educational context. Specifically examining how politics, religion, and other controversial topics can be managed in schools today at all grade levels.

*Course dates: February 3 - March 30*

*Cost: \$135 (member) or \$235 (non-member) | Available for 3 graduate credits through ASU  
Facilitator: Katie Guerrero (Cherry Creek Education Association)*



## Productive Math Struggle, A 6-Point Action Plan for Fostering Perseverance

In this five week book study, we will learn how to implement strategies that foster productive struggle as detailed in the text *Productive Math Struggle, A 6-Point Action Plan For Fostering Perseverance*, written by John J. SanGiovanni, Susie Katt and Kevin J. Dykema. Through reading, reflection, discussions and completion of assignments participants will gain insights and practical strategies to implement in the classroom to promote and foster perseverance in the math classroom.

*Course dates: February 3 - March 9; March 24 - April 28*

*Cost: \$90 (member) or \$190 (non-member) | Available for 2 graduate credits through ASU  
Facilitator: Angelina Kelly (Cherry Creek Education Association)*



## Technology Tools for English Language Learners

In this course, we will explore and apply educational technology tools to increase the engagement and achievement of ELL students. We'll focus on tools that facilitate communication, content delivery, literacy development, academic language growth, and assessments.

*Course dates: February 3 - March 2; March 3 - March 31*

*Cost: \$90 (member) or \$190 (non-member) | Available for 2 graduate credits through ASU  
Facilitator: Amanda McIntyre (District Twelve Educators' Association)*



## I Never Thought of It That Way: How to Have Fearlessly Curious Conversations in Dangerously Divided Times

This course invites adults to explore the transformative power of curiosity in bridging divides, based on the insights from *I Never Thought of it That Way* by Monica Guzman. Designed for anyone looking to improve communication skills and navigate challenging conversations, this course delves into Guzman's techniques for fostering empathy, understanding, and open-mindedness. Participants will learn how to engage with people who hold different viewpoints, developing skills that can improve relationships, workplace dynamics, and community interactions.

*Course dates: February 3 - March 30*

*Cost: \$135 (member) or \$235 (non-member) | Available for 3 graduate credits through ASU  
Facilitator: Kyleene Pedrett (Cherry Creek Education Association)*





## Textured Teaching: A Framework for Culturally Sustaining Practices

In this course we will be studying the book *Textured Teaching: A Framework for Culturally Sustaining Practices* by Lorena Escoto German, which is crafted for educators seeking to transform their classrooms into inclusive, culturally responsive environments. Through German's framework, participants will explore strategies for integrating social justice, anti-bias education, and culturally sustaining practices into their curriculum. This course provides teachers with the tools to make meaningful connections with students' cultural backgrounds, enhance engagement, and foster a more just, inclusive learning space.

*Course dates: February 3 - March 16*

*Cost: \$90 (member) or \$190 (non-member) | Available for 2 graduate credits through ASU*

*Facilitator: Kyleene Pedrett (Cherry Creek Education Association)*



## The School Garden, Nature's Classroom

Having a school garden provides children the opportunity to learn new skills, enjoy the outdoors, and benefit from local, healthy foods. School gardens are an excellent way to engage children outside the classroom whilst teaching them teamwork, responsibility, creativity, and nutrition. When starting a school garden there are many factors to consider, and getting started can feel daunting. This course is for school personnel that are interested in starting a school garden as well as school personnel that have existing school gardens. We will dig into the various factors that promote a healthy sustainable garden including community and school involvement, funding, specific plants that grow well in a school garden, and more. At the end of the course students will be prepared to develop a school garden and/or refine an existing school garden.

*Course dates: February 3 - March 17*

*Cost: \$90 (member) or \$190 (non-member) | Available for 2 graduate credits through ASU*

*Facilitator: Kase Pooley (Denver Classroom Teachers' Association)*



## Understanding Trauma

This course is designed to help you understand what trauma is, how our students are experiencing it, and how to work with students who have experienced trauma. This introductory course will look at the definition of trauma and how our students may be exhibiting signs of trauma that are masked as other behavioral issues, and how we can make changes in our perceptions and actions to support all students. Note: This course has sensitive material that could be triggering.

*Course dates: February 3 - March 2*

*Cost: \$90 (member) or \$190 (non-member) | Available for 2 graduate credits through ASU*

*Facilitator: Elizabeth Sedalnick (District Twelve Educators' Association)*



## Preparing Students with Disabilities for the Transition to Higher Education

Educators will actively engage in online learning to further develop their understanding of how to prepare students with disabilities for the transition to higher education. The course will emphasize the differences between support for students with disabilities in K-12 education versus those available in postsecondary education. Topics will include disability law, student roles and responsibilities, accommodations in higher education, issues around disability disclosure, and strategies to build self-advocacy. As a final project, participants will create a document of resources to share with students, families, and colleagues.

*Course dates: February 3 - March 16*

*Cost: \$135 (member) or \$235 (non-member) | Available for 3 graduate credits through ASU*

*Facilitator: Erin Trendler (Boulder Valley Education Association)*



## Supporting the Grieving Student

Teachers will actively participate in online learning to further develop their understanding of how grief and loss impact students in their classroom and learn practical steps they can take to support their students through this difficult life experience/transition. This course is appropriate for classroom teachers at all levels. Additionally, anyone in the educational setting who is currently or potentially will be supporting a grieving student could benefit from this course. Warning: this course covers sensitive material that could be triggering.

*Course dates: February 10 - March 16; March 31 - May 4*

*Cost: \$135 (member) or \$235 (non-member) | Available for 3 graduate credits through ASU*

*Facilitator: Shannon Kershaw (Littleton Education Association)*



## Appreciating Multiple Intelligences in the Classroom

Howard Gardner stated that "If we recognize [the combinations of intelligences], I think we will have at least a better chance of dealing appropriately with the many problems that we face in the world." What can we unlock in ourselves and in our students by encouraging and appreciating the broad range of abilities each of us brings to our relationships and learning environment? In this course, appropriate for educators of all levels, you will have the opportunity to look outside the narrow scope of traditional IQ scores and explore the notion that we all learn, contribute and excel in many different ways.

*Course dates: February 10 - April 5*

*Cost: \$135 (member) or \$235 (non-member) | Available for 3 graduate credits from ASU*

*Facilitator: Lainie Kirsch (Cherry Creek Education Association)*



## Teaching the Explosive Child

Instead of focusing on getting our more challenging students to comply with adult directives, we can work towards improving flexibility and frustration tolerance so these same students can start learning lifelong skills! By exploring *The Explosive Child* by Dr. Ross Greene, we will attempt to switch our thinking that children choose poor behavior. Instead, we will look at Greene's idea that children do well when they can. This paradigm shift is applicable and crucial for all educators and school personnel.

*Course dates: February 10 - April 5*

*Cost: \$135 (member) or \$235 (non-member) | Available for 3 graduate credits through ASU*

*Facilitator: Lainie Kirsch (Cherry Creek Education Association)*



## Hollywood Teachers and Real Life Heroes

What can we learn from well known teachers, whether they are fictional or the real deal? In this class you will further your own teaching practices by exploring and observing the teaching methods, philosophies and strategies of some of our favorites! From *Dangerous Minds* to *Stand and Deliver*, from Ron Clark to Bill Nye the Science Guy you will have the opportunity to look at many popular movie teachers and real-life educators and see what makes them so inspirational!

*Course dates: February 10 - April 5*

*Cost: \$135 (member) or \$235 (non-member) | Available for 3 graduate credits through ASU*

*Facilitator: Lainie Kirsch (Cherry Creek Education Association)*



## The Teacher Clarity Playbook

This course works through all 9 modules of the book *The Teacher Clarity Playbook: A Hands On Guide to Creating Learning Intentions and Success Criteria for Organized, Effective Instruction*. It supports teachers in creating incredibly effective, success oriented lesson plans that improve engagement, lower behaviors, and create more learning opportunities. The book teaches educators how to become more organized & efficient so they can spend more time building relationships and have more productivity in their classroom.

*Course dates: February 10 - March 10*

*Cost: \$45 (member) or \$145 (non-member) | Available for 1 graduate credits through ASU*

*Facilitator: Ellie Lucy (Denver Classroom Teachers' Association)*



## Autism 101: Overall Information and Strategies to Use in Class

Teachers will actively participate in online learning to further develop their understanding of the Autism Disorder and how it impacts the learning of these students. Specific applications will be made to practice by discussing different strategies to support students in the classroom setting. Throughout the course, we will focus on an overview of the disability, how Autism impacts language/emotions, social interactions, cognitive and sensory needs. This will be through reading sections of the book, *The Complete Guide to Asperger's Syndrome* by Tony Attwood as well as other readings and videos.

*Course dates: February 10 - March 9*

*Cost: \$45 (member) or \$145 (non-member) | Available for 1 graduate credit through ASU*

*Facilitator: Jenny Shoen (Littleton Education Association)*



## Build a Culture of Feedback

Teacher learners will discover how to cultivate a rich culture of feedback in their classroom and school to improve student and teacher learning and efficacy. Each week will focus on a different element of feedback: foundations, teacher to student, student to student, student to teacher, and educator to educator. Participants will be presented with a variety of instructional techniques that can be directly applied or modified for all grade levels, K-12.

*Course dates: February 10 - March 16*

*Cost: \$90 (member) or \$190 (non-member) | Available for 2 graduate credits through ASU*

*Facilitator: Anne Sutton (Windsor-Severance Education Association)*



## Mindset: The New Psychology of Success

This course will examine belief systems about learning and how failures and challenges can be reframed as opportunities for growth. Strategies and tools will be developed for creating a culture of perseverance in classrooms. Participants will reflect on their current practices around mindset and create an implementation plan for their educational environment that focuses on growth mindset.

*Course dates: February 17 - March 16; March 24 - April 20*

*Cost: \$45 (member) or \$145 (non-member) | Available for 1 graduate credit through ASU*

*Facilitator: Amy Bohan (Westminster Education Association)*



## Strategies that Engage: Moving Beyond the Stereotypes of Poverty

This course will provide an opportunity to explore core strategies for engagement that lead to academic success for learners. Participants will explore seven factors that establish purposeful learning routines to increase motivation and empower students to take ownership of learning. Enrolled educators will implement new strategies and create an immediate plan for their classroom that enriches learning and revitalizes the school day.

*Course dates: February 17 - March 9*

*Cost: \$45 (member) or \$145 (non-member) | Available for 1 graduate credit through ASU*

*Facilitator: Amy Bohan (Westminster Education Association)*



## Stress Management for Educators

Do you have stress in your life from work, family, friends, finances, health, technology, etc.? Do you feel burned out with all that you are asked to do? Is your current stress level okay, but you want methods to manage stress in the future? This class will help you learn how stress affects you in the short and long term, identify the stressors in your life, and practice techniques that take less than ten minutes to lower stress and boost the quality of life.

*Course dates: February 17 - March 16; March 17 - April 13*

*Cost: \$90 (member) or \$190 (non-member) | Available for 2 graduate credits through ASU*

*Facilitator: Catherine Lee (District Twelve Educators' Association)*

**All class dates are subject to change based on facilitator availability. All classes are subject to cancellation if fewer than five students enroll by the official class start date.**





## AI-Powered Lesson Planning: Harnessing Technology for Effective Teaching

In this course, educators will engage in online learning to deepen their understanding of integrating AI tools into effective unit and lesson planning. Participants will explore various AI platforms, including ChatGPT, Copilot, Teach Aid, and other resource creation tools, applying their features to develop comprehensive lesson plans and assessments. By the end of the course, each educator will produce a complete unit and lesson plan ready for classroom implementation. This course is designed for educators across all disciplines, including secondary teachers, teacher librarians, instructional coaches, and administrators, who wish to enhance their planning skills using cutting-edge technology.

*Course dates: February 17 - March 31*

*Cost: \$90 (member) or \$190 (non-member) | Available for 2 graduate credits through ASU*

*Facilitator: Lindsay Johnson (Eagle County Education Association)*



## My Grandmother's Hands: Racialized Trauma and the Pathway to Mending Our Hearts and Bodies

Teachers, special service providers, and/or school professionals will gain a deeper understanding how racism impacts the Black body. Learners will read, "My Grandmother's Hands" and reflect on different statistics, information, and emotions that are discussed in the text. Menakem provides somatic healing exercises throughout the book that can support healing for both all educators. \*This book contains stories and statistics about violence; please take care of yourself throughout this course.

*Course dates: February 17 - March 9; March 24 - May 4*

*Cost: \$45 (member) or \$145 (non-member) | Available for 1 graduate credit through ASU*

*Facilitator: Kaitlyn Murdoch (Cherry Creek Education Association)*



## Atomic Habits: Changing Your Systems to Go from Good to Great

Learn how create systems that lead to good habits, breaking bad ones, and overcoming a lack of motivation. This book study will reshape the way you think about progress and success, and give you the tools and strategies you need to transform your habits.

*Course dates: February 24 - March 23; March 16 - April 13*

*Cost: \$45 (member) or \$145 (non-member) | Available for 1 graduate credit through ASU*

*Facilitator: Amy Bohen (Westminster Education Association)*



## Trauma Sensitive School Leadership for Teachers and School Leaders

Teachers and leaders will examine SEL as an approach and not a program and be provided with specific steps for getting started with SEL in the classroom. The framing of SEL and the importance of an SEL-informed classroom will be addressed. Specific intrapersonal practices around implementation and integration to include mindfulness strategies and then interpersonal or classroom related strategies for students will be examined. Teachers and leaders will examine questions for the field as well as engage in a pre and post assessment before creating a plan for implementation of SEL practice in their classroom or school. Teachers will engage in reflection and growth and learn more about the tenets of social and emotional learning along with being provided the language and evidence based advice to identify and nurture SEL in themselves, students and school. Students will create alliances and opportunities for children and adults in their school community to thrive and reduce compassion fatigue.

*Course dates: February 24 - March 30*

*Cost: \$45 (member) or \$145 (non-member) | Available for 1 graduate credit through ASU*

*Facilitator: Emily Mulvihill (Colorado Spring Education Association)*



### English Learner PD Course

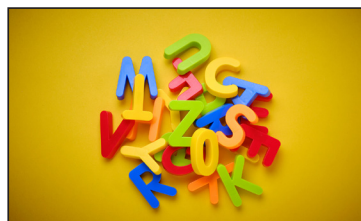
## Next Steps with Academic Conversations

In this follow-up course, teachers will actively participate in online learning to further develop their understanding and application of Structured Academic Conversations in the Classroom and how to utilize Structured Conversations to Support CLD Students. Teachers will synthesize conversation work across disciplines, understand the most recent research in utilizing Structured Academic Conversations in the Classroom, apply specific strategies for different lesson elements, reflect on and discuss their experiences with other teachers, and ultimately develop an Action Plan for how to strengthen the practices of utilizing Structured Academic Conversations in their classrooms.

*Course dates: March 2 - April 26*

*Cost: \$135 (member) or \$235 (non-member) | Available for 3 graduate credits through ASU*

*Facilitator: Ian Evans (District Twelve Educators' Association)*



## Overcoming Dyslexia

Participants will gain knowledge that provides the foundation for the latest science-based diagnosis of dyslexia and effective interventions for reading difficulties. The course dives deep into how skilled reading develops and when to expect the successive milestones. Participants will learn to recognize the specific clues that should alert them that reading is not progressing smoothly. This course will provide educators with practical help struggling readers.

*Course dates: March 3 - April 27*

*Cost: \$90 (member) or \$190 (non-member) | Available for 2 graduate credits through ASU*

*Facilitator: Larisa Baskin (Aurora Education Association)*



## Unlocking Learning: Designing Educational Escape Room Experiences

In this course, educators will learn how to create captivating and immersive escape room-like activities for students. Through a blend of theory and practical application, participants will explore the principles of game-based learning, puzzle design, and narrative development to craft educational escape room experiences tailored to their curriculum and student needs. From brainstorming themes to designing clues and puzzles, educators will acquire the skills and strategies necessary to engage students in collaborative problem-solving, critical thinking, and content mastery.

*Course dates: March 3 - March 30*

*Cost: \$90 (member) or \$190 (non-member) | Available for 2 graduate credits through ASU*

*Facilitator: Caroline Davis (District Twelve Educators' Association)*



## Gamified Review Strategies for Educators

Discover innovative methods to enhance student learning through gamified review programs such as Quizizz, Pear Deck Flashcard Factory, and Blooket. This course equips educators with the skills and knowledge to effectively integrate these engaging platforms into their teaching practices. Learn how to create dynamic review sessions that captivate students' attention, boost participation, and ultimately improve content retention.

*Course dates: March 3 - March 30*

*Cost: \$90 (member) or \$190 (non-member) | Available for 2 graduate credits through ASU*

*Facilitator: Caroline Davis (District Twelve Educators' Association)*



## Hacking School Leadership: 10 Ways Great Leaders Inspire Learning that Teachers, Students and Parents Love

There are so many expectations that are being asked of leaders, and it is critical that they focus on building relationships, making connections, developing a mindset of growth, and exploring innovative leadership. By identifying the three components of building staff, being intentional, and opening doors, leaders are provided a framework that will allow them to weave a tapestry of positive culture and success for all.

*Course dates: March 3 - March 30*

*Cost: \$45 (member) or \$145 (non-member) | Available for 1 graduate credit through ASU*

*Facilitator: Stephanie Fast (Littleton Education Association)*



## No More Letter of the Week

Teachers will actively participate in online learning to further develop their understanding of how to teach letters of the alphabet, letter sounds, and early phonemic awareness to young students. Teachers will understand how to create a print-rich environment, increase opportunities for writing practice, and how to use songs, poems, games and student names to teach early literacy skills.

*Course dates: March 3 - April 6*

*Cost: \$45 (member) or \$145 (non-member) | Available for 1 graduate credit through ASU  
Facilitator: Tracy Kelley (Poudre Education Association)*



## Teachers These Days: Stories and Strategies for Reconnection

The students we teach today are not the same students we taught ten years ago, five years ago, or even three years ago! Dr. Jody Carrington and Laurie McIntosh will take you on a journey through reconnection as it relates to the science of human development and theory. They will share stories from teachers walking the walk day in and day out. This course is for those who need a reminder that the work they are doing is powerful. It is important and it is shaping lives. This course will allow you to reflect deeply on your teaching practices, analyze misconceptions, delve into social-emotional learning, utilize strategies, and help you navigate some of the toughest times we are facing as teachers. It will help you reconnect with yourself as a professional and with your students. This course will touch on the hard conversations of trauma, grief, racism, violence, and loss.

*Course dates: March 3 - April 27*

*Cost: \$135 (member) or \$235 (non-member) | Available for 3 graduate credits through ASU  
Facilitator: Michelle Hagerman (Mesa Valley Education Association)*



## Creating Concrete Classroom Management Strategies

In this class you will explore discipline and classroom management. We will look at successful classroom management and build a personal classroom plan where you can really identify goals, tier consequences, make productive rules, respond to positive behavior and lead with consistency.

*Course dates: March 3 - April 5*

*Cost: \$45 (member) or \$145 (non-member) | Available for 1 graduate credit from ASU  
Facilitator: Lainie Kirsch (Cherry Creek Education Association)*



## Building Relationships with Students

As we have learned during the Pandemic, building relationships with students is a key piece of what we do as educators. Without relationships, we will be unable to accomplish anything else with students. In this course, we take a look at what, why, and how to build relationships with our students.

*Course dates: March 3 - March 30*

*Cost: \$90 (member) or \$190 (non-member) | Available for 2 graduate credits through ASU  
Facilitator: Elizabeth Sedalnick (District Twelve Educators' Association)*



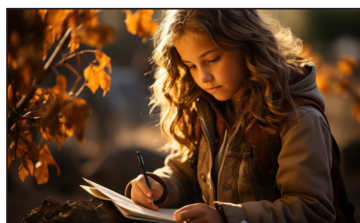
## Recognizing and Coping with Sensory Processing Differences in the Classroom

Teachers will actively participate in online learning to further develop their understanding of sensory processing disorders in the classroom. We will be exploring the eight senses (touch, smell, taste, hearing, vision, vestibular, proprioception, and interoception) and how to recognize when a student is having difficulty tuning in or filtering out information in the school environment. We will also learn how to help these students in the classroom with simple accommodations and strategies.

*Course dates: March 5 - April 30*

*Cost: \$45 (member) or \$145 (non-member) | Available for 2 graduate credits through ASU  
Facilitator: Jenny Frank (Cherry Creek Education Association)*





## Nature Journals for Inquiry-Based Learning in Education

In this course, educators will be equipped with the tools to seamlessly integrate nature journaling into their teaching practices, fostering curiosity, critical thinking, and a deep connection with the environment. Delve into the foundations of nature journaling, explore practical techniques, and discover ways to develop inquiry skills in students. With a focus on cross-curricular integration, assessment strategies, and community engagement, this course empowers educators to create dynamic and inspiring learning experiences.

*Course dates: March 10 - April 20*

*Cost: \$90 (member) or \$190 (non-member) | Available for 2 graduate credits through ASU*

*Facilitator: Victoria Wilson (Poudre Education Association)*

## Mathematics Tasks for the Thinking Classroom, Grades K-5

In this 8-week professional development course, educators will dive into the “Mathematics Tasks for the Thinking Classroom” by Peter Liljedahl, focusing on strategies for Grades K-5. Participants will explore a variety of tasks designed to promote deep mathematical thinking and understanding among young learners. Through reading, discussions, activities, and reflective assignments, educators will learn how to implement engaging tasks that foster problem-solving skills, critical thinking, and a growth mindset in their classrooms. By the end of the course, participants will have developed a deeper understanding of the Building Thinking Classrooms practices to create a dynamic and thought-provoking math learning environment.

*Course dates: March 10 - May 4*

*Cost: \$135 (member) or \$235 (non-member) | Available for 3 graduate credits through ASU*

*Facilitator: Brittany Osborn (Poudre Education Association)*



English  
Learner  
PD Course



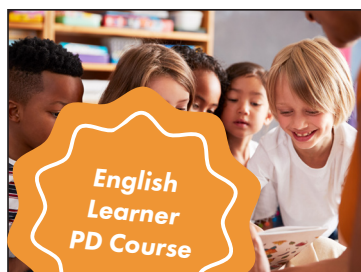
## Google Level 1 Certification Training

This course is designed to provide educators with the confidence and understanding of how to deliver the Google suite within their classroom and workplace. Educators will engage in a collaborative learning environment with other colleagues examining how using technology in the classroom and work environment can contribute to student achievement.

*Course dates: March 17 - April 27*

*Cost: \$90 (member) or \$190 (non-member) | Available for 2 graduate credits through ASU*

*Facilitator: Robert Thompson (Colorado Education Association)*



English  
Learner  
PD Course

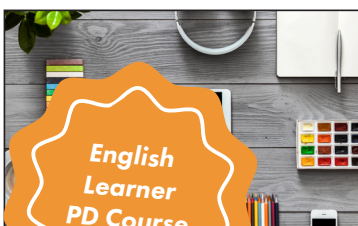
## Reach All Readers: A Guide to Transform Your Literacy Instruction

Throughout this course, students will read the book called, Reach All Readers by Anna Geiger, also known as “The Measured Mom”. This book not only looks at the why of the shift in reading instruction, but also incorporates the how by including resources that teachers can take back to their classroom the next day. Participants will contribute to discussions, make reflections on their current practice, participate in video shares, and create lesson plans.

*Course dates: March 17 - April 27*

*Cost: \$90 (member) or \$190 (non-member) | Available for 2 graduate credits through ASU*

*Facilitator: Danielle Vinton (District Twelve Educators' Association)*



English  
Learner  
PD Course

## Advanced Canva Skills

In this course, teachers will actively participate in online learning to explore advanced Canva skills to use in their classroom and with their students. Each week, we'll focus on advanced and interactive features, specifically of Canva Pro, like bulk editing, Canva Live, Magic Studio, collaborative whiteboard sessions to make learning fun, and more. Whether you're new or a Canva Pro, this course will help you create awesome materials for your classroom. By the end of the course, you'll have numerous skills to up your project and classroom content game that are ready to use with your students!

*Course dates: March 20 - April 13*

*Cost: \$90 (member) or \$190 (non-member) | Available for 2 graduate credits through ASU*

*Facilitator: Brittany Osborn (Poudre Education Association)*



## Planning a Thinking Classroom

In this 8-week course, teachers will begin planning and implementing the Building Thinking Classroom (BTC) model, focusing on all four toolkits to support its implementation. Participants will revisit the 14 teaching practices outlined by Peter Liljedahl, equipping themselves with practical strategies for fostering critical thinking in mathematics and creating plans and reflecting on implementing the toolkits in their own classroom. By the course's end, educators will have developed a comprehensive set of resources aligned with BTC principles, ready to create dynamic and engaging classroom environments that nurture students' mathematical thinking skills.

*Course dates: March 10 - April 13*

*Cost: \$90 (member) or \$190 (non-member) | Available for 2 graduate credits through ASU*

*Facilitator: Brittany Osborn (Poudre Education Association)*

## Developing Academic Vocabulary in the Diverse Classroom

Explore basic principles for developing academic vocabulary in your classroom. With a lens on supporting diverse learners, this course will cover a variety of topics that enhance a student's academic vocabulary acquisition. This includes considering a student's socio-cultural influences, their individual learning styles, and prior vocabulary knowledge. Are students understanding the academic vocabulary that we are teaching them? What are some tools used to effectively review and support academic vocabulary instruction? Explore these questions and more in this class as we foster academic vocabulary acquisition for all students.

*Course dates: March 24 - April 27*

*Cost: \$90 (member) or \$190 (non-member) | Available for 2 graduate credits through ASU*

*Facilitator: Caroline Davis (District Twelve Educators' Association)*

## What Happened to You?: Conversations on Trauma, Resilience, and Healing

"What Happened to You?" has helped to revolutionize our understanding of trauma and its impact on children's development and learning. This professional development course is designed for educators who want to deepen their understanding of trauma and learn practical strategies for creating a trauma-informed classroom. Participants will learn about the neurobiology of trauma, the impact of adverse childhood experiences (ACEs) on learning and behavior, and the importance of creating safe and supportive environments for all students. The development of practical strategies for creating a trauma-informed classroom, will include ways to build positive relationships with students, create a sense of safety and predictability, and promote self-regulation and coping skills.

*Course dates: March 24 - May 4*

*Cost: \$90 (member) or \$190 (non-member) | Available for 2 graduate credits through ASU*

*Facilitator: Katie Guerrero (Cherry Creek Education Association)*

## Number Sense Routines

Deep understanding of number sense is the foundation for developing math skills in young learners. The daily use of 5 to 15 minute exercises will help students build number sense. Participants in this book study will learn how easily number sense can be developed and about ways how to implement responsive number sense routines no matter what curriculum materials teachers use.

*Course dates: March 31 - April 27*

*Cost: \$45 (member) or \$145 (non-member) | Available for 1 graduate credit through ASU*

*Facilitator: Larisa Baskin (Aurora Education Association)*



English  
Learner  
PD Course

Behavioral/  
SPED Course



Behavioral/  
SPED Course





## LIFT OFF: Create Engaging Math Lessons with Desmos Activity Builder

Help your math students soar by learning how to create, modify, and run Desmos Activity Builder lessons in your classroom! This course also covers ELD standards and SPED/Behavioral Health standards.

*Course dates: March 31 - May 4*

*Cost: \$135 (member) or \$235 (non-member) | Available for 3 graduate credits from ASU*

*Facilitator: Riana Bichler (Mesa Valley Education Association)*



## Permission to Feel: Unlocking the Power of Emotion to Help Our Kids, Our Society and Ourselves Thrive

This course is a book study on Marc Brackett's best selling book, *Permission to Feel*. Based on research from the Yale Center for Emotional Intelligence, this course will focus on practical and research based five keys to emotional intelligence and how those impact education and learning. Educators will learn his technique known as "Ruler Training" and transform their emotional literacy.

*Course dates: March 31 - April 27*

*Cost: \$45 (member) or \$145 (non-member) | Available for 1 graduate credit through ASU*

*Facilitator: Stephanie Fast (Littleton Education Association)*



## Mental Health for Our Students: The Top 5 Struggles Our Students Face Today

Students today are facing such a different set of struggles than we did when we were in school. This course focuses and introduces the five major topics that kids deal with today including (but not limited to) bullying, mental health, suicide, stress, and inequity. In this class we will work to understand and find a set of tools to help our students navigate through this new age with support from us. No books needed, all materials are included.

*Course dates: March 31 - April 27*

*Cost: \$90 (member) or \$190 (non-member) | Available for 2 graduate credits through ASU*

*Facilitator: Elizabeth Sedalnick (District Twelve Educators' Association)*



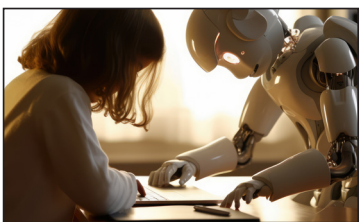
## Transgender and Gender Expansive Youth

This course is designed to help professionals in education better understand transgender and nonconforming youth, as well as how to support this vulnerable population. As our world evolves and changes, it behooves us to stay up with the current changes to understand, work with and support all students. Teachers will actively participate in online learning to further develop their understanding of the language used, needs of our student population, how to support transgender and nonconforming youth in our schools, and the law.

*Course dates: March 31 - April 27*

*Cost: \$90 (member) or \$190 (non-member) | Available for 2 graduate credits through ASU*

*Facilitator: Elizabeth Sedalnick (District Twelve Educators' Association)*



## AI in the Classroom: Empowering Tool or Emerging Threat?

This course explores the dynamic intersection of Artificial Intelligence (AI) and education, particularly focusing on its implications for adult educators. It aims to dissect the dual perspectives on AI as both a potentially transformative educational tool and a perceived threat to traditional teaching roles. Through a critical examination of current technologies, perspective analysis and personal exploration, participants will engage in a comprehensive study of AI's role in shaping the future of education. The course is designed to equip educators with the knowledge and skills to critically assess the potential of AI to enhance teaching and learning while also considering the ethical, practical, and pedagogical challenges it presents.

*Course dates: April 7 - May 4*

*Cost: \$90 (member) or \$190 (non-member) | Available for 2 graduate credits through ASU*

*Facilitator: Edmond Bedu-Annan (District Twelve Educators' Association)*





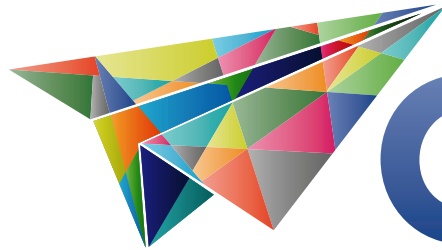
## Conversations Around Gifted Education

Looking to engage with others around topics focused on gifted education, programming, and learners? Listen and watch from a menu of choices from 'Conversations with CAGT' of gifted experts and then engage with other participants through discussions and assignments. Topics will include motivation, perfectionism, twice-exceptionality, diversity, programming, and more. This course is designed to ignite your passion with supporting gifted learners whether you are new to the field or are already an accomplished educator.

*Course dates: April 7 - May 4*

*Cost: \$45 (member) or \$145 (non-member) | Available for 1 graduate credit through ASU*

*Facilitator: Rachel Graham (Estes Park Education Association)*



Colorado Professional Institute for Learning Online Together

# [www.ceacopilot.org](http://www.ceacopilot.org)