

CO pilot

Colorado Professional Institute for Learning Online Together



www.ceacopilot.org

**Summer 2026
Courses**



A bit about COpilot

Colorado teachers and education support professionals are deeply committed to every student's success. We want all students to achieve their full potential as individuals and become productive citizens who make positive contributions to society.

We believe that educators provide the stable, nurturing, inspiring environment that makes it possible to teach each student and provide individual attention to each student's learning needs. To this end, we work to ensure that every student has a qualified, caring educator.

We believe that we must change the way educators are recruited, trained, evaluated, supported, and held accountable. We believe we must raise the bar for what it means to be a quality educator by focusing on preparing new educators for the classroom, attracting and retaining educators, providing continuous, high quality professional development for all educators, and promoting effective teachers and quality educators.

We believe that COpilot is one key to achieving these core areas of professional excellence. Through expanding your learning opportunities, you will ensure that all students in Colorado public schools have the benefit of qualified, caring, committed educators throughout their school years.

For more information or if you have questions, please contact us at ceacopilot@coloradoea.org!

Frequently Asked Questions (FAQs):

How do I sign up for a COpilot account?

To create a COpilot account, visit www.ceacopilot.org, click Log In and either verify your Association membership or create a guest account. This easy process doesn't take more than 30 seconds!

How much time does a class take?

Most COpilot classes are 15 instructional hours spread over five or six weeks. Students should expect to spend about three hours per week doing class activities.

Can I earn credit, clock hours, and a certificate?

The answer is a resounding "Yes!" Nearly all of the classes on COpilot qualify for graduate credit from Adams State University. All of the classes are eligible for license renewal hours through the Colorado Department of Education. At the conclusion of each class, you will receive a certificate of completion for your records.

Can I get the syllabus for the class before making a decision?

Absolutely! Just email the Director of Learning Services, Casey Kilpatrick (ckilpatrick@coloradoea.org), for that information.

Can my district use COpilot for its professional development?

CEA has worked hard to make sure districts in partnership with the local association can use COpilot to run all of their professional development. We do not charge districts to use the platform. Instead, our requirement is that the district and local association reach an agreement that dictates the school district will pay members who facilitate the classes a fair stipend. For more information about this kind of opportunity, please contact Casey Kilpatrick at CEA (ckilpatrick@coloradoea.org).

How are classes structured?

All of our classes are fully facilitated, which means you'll have a trained CEA member leading you and teachers from across Colorado through the content. Our classes are time-bound so that the facilitation makes sense. Through using this mostly synchronous method, teachers can more easily collaborate with each other, share experiences, and receive coaching as they practice strategies in their classrooms.

Spring 2026 Class List

Elementary MATH Intervention - Research Based Strategies for Supporting Learners who Struggle

Utilizing high leverage instructional practice to support our elementary students in becoming proficient mathematicians is critical to stop the widening achievement gap. In this class, we will focus on six action oriented, research based recommendations from the IES (Institute of Education Sciences, March 2021) We'll learn specific ways to effectively implement them in our practice to support struggling learners. The research is based on students in Kindergarten through 6th grade in an intervention setting. While the focus of this class is on instructional strategies for math intervention, the guidance outlined are great practices for all instructional settings. This class will include unique considerations for diverse populations of students who struggle with math concepts, including students with disabilities and multilingual learners.

Course dates: May 3 - June 14

*Cost: \$90 (member) or \$190 (non-member) | Available for 2 graduate credits through ASU
Facilitator: Erin Grodeska (Aurora Education Association)*

I Will Die on This Hill: Autistic Adults, Autism Parents, and the Children Who Deserve a Better World

In this book study, educators will learn about the different perspectives surrounding autism spectrum disorder coming from Actually Autistic adults and parents of autistic children. Participants will gain an understanding of the impacts of the diagnosis, what supports are needed in and out of the classroom, and how to make our world a more accessible place for all. This course is appropriate for any grade level and content area, instructional coaches, special service providers, counselors and mental health teams, and administrators.

Course dates: May 4 - June 14

*Cost: \$90 (member) or \$190 (non-member) | Available for 2 graduate credits through ASU
Facilitator: Monica Beckner (Greeley Education Association)*

ADHD Is Awesome: A Guide to (Mostly) Thriving with ADHD

Why is ADHD Awesome? Find out in this book study, where teachers will actively participate in online learning to further develop their understanding of the lived experience of ADHD and reflect upon creative ways to empower and support their students with ADHD.

Course dates: May 4 - June 14; May 18 - June 28

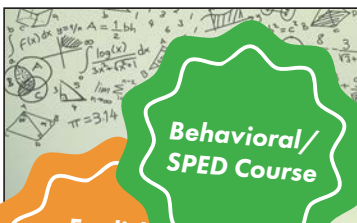
*Cost: \$90 (member) or \$190 (non-member) | Available for 2 graduate credits through ASU
Facilitator: Riana Bichler (Mesa Valley Education Association)*

ANCHORS AWAY: Set Sail For SAT Prep

Teachers will take the helm as they steer their students toward a successful SAT season. On this adventure, teachers will learn how to set up and run an SAT test prep course through Khan Academy after they review the practice test through the SAT Blue Book, as well as work to develop a personalized classroom unit plan, to help navigate through the new digital test and get their students' test performance in ship-shape!

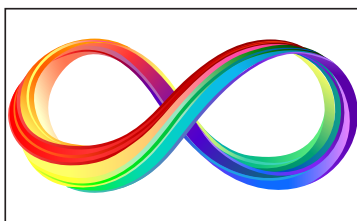
Course dates: May 4 - June 14

*Cost: \$90 (member) or \$190 (non-member) | Available for 2 graduate credits through ASU
Facilitator: Riana Bichler (Mesa Valley Education Association)*

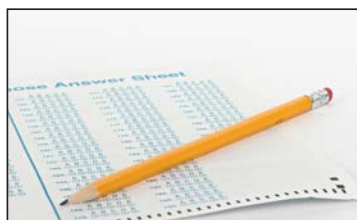


Behavioral/
SPED Course

English
Learner
PD Course



Behavioral/
SPED Course



All class dates are subject to change based on facilitator availability. All classes are subject to cancellation if fewer than five students enroll by the official class start date.



The Everyday Engineer: Building a Daily Culture of STEM

Every teacher has faced the frustration of students who stop at the first hurdle. This course is designed to transform that 'stuck' mindset into a problem-solving engine. By integrating the Engineering Design Process (EDP) into your daily routine—regardless of your subject or grade level—you'll learn to turn classroom obstacles into creative opportunities. This 5-week integration provides a high-impact, low-cost blueprint for making innovation a consistent habit in your classroom, not just a once-a-year event.

Course dates: May 4 - June 8

*Cost: \$90 (member) or \$190 (non-member) | Available for 2 graduate credits through ASU
Facilitator: Melissa Clemons (Westminster Education Association)*



English
Learner
PD Course

From Sounds to Sentences: Exploring the Structures of Language

Teachers will actively participate in online learning to further develop their understanding of the five basic components of language and how humans acquire language. This course offers an in-depth exploration of the five fundamental language structures: phonology, morphology, syntax, semantics, and pragmatics. Specific applications will be made to practice, as teachers take their learning into their classrooms. Through readings, discussions, and application of practice, teachers will develop a deeper appreciation for the complexity of language. This course is appropriate for educators who are linguistic enthusiasts.

Course dates: May 4 - June 14

*Cost: \$90 (member) or \$190 (non-member) | Available for 2 graduate credits through ASU
Facilitator: Melanie Dershem (Aurora Education Association)*



English
Learner
PD Course

Sketchnoting: Enhancing Learning Through Visual Notetaking

Visual notetaking or sketchnotes is a valuable skill to move your students into 21st century learning. Sketchnoting was created by artist Mike Rhode. He was unable to concentrate while at meetings and in class so he came up with a form of purposeful doodling. Sketchnotes don't require artistic skills, they develop skills to visually synthesize and summarize via shapes, connectors, and text. Sketchnotes are as much a method of note taking as they are a form of creative expression. You will be able to differentiate your instruction and find a valuable new way to assess your students with visual notes.

Course dates: May 4 - June 7

*Cost: \$90 (member) or \$190 (non-member) | Available for 2 graduate credits through ASU
Facilitator: Colleen Dowling (District Twelve Educators' Association)*



English
Learner
PD Course

Using Visuals to Teach English Language Learners

Do your students struggle with note taking? Do they doodle in class? Do you use way too many photocopies to teach a concept? Then visual notetaking may be a valuable skill to move your students into 21st century learning. Using visuals is an effective, research-based method for teaching English language learners (ELLs) as well as their fellow classmates. Visuals support essential information and put classwork into a context that can make learning more understandable and comprehensible.

Course dates: May 4 - June 14; June 15 - July 26

*Cost: \$135 (member) or \$235 (non-member) | Available for 3 graduate credits through ASU
Facilitator: Colleen Dowling (District Twelve Educators' Association)*

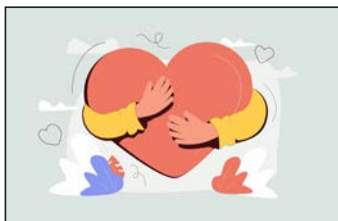


Positive Mindset Habits for Teachers: 10 Ways to Reduce Stress, Increase Engagement and Reignite your Passion for Teaching

In this book study, educators will learn 10 strategies that increase their happiness, reduce their stress and enhance their passion in the classroom. The course will focus on how educational professionals can use growth mindset to use practical and tangible ways to improve their craft and bring more joy into their lives and classrooms.

Course dates: May 4 - May 31

*Cost: \$45 (member) or \$145 (non-member) | Available for 1 graduate credit through ASU
Facilitator: Stephanie Fast (Littleton Education Association)*



Educator Bandwidth: How to Reclaim Your Energy, Passion and Time

In this book study, educators will focus on the latest neuroscience research as it pertains to the most effective strategies and habits that help you manage your mental bandwidth and prioritize drains on mental energy. Educators will focus on six key factors that contribute to their bandwidth: balancing their priorities, filtering through possibilities, mental habits that improve focus, physical habits that fuel the brain, connection with others and workload and time management. By establishing good habits, focusing on what's possible within your locus of control, and balancing priorities, educators can improve their bandwidth and feel more engaged, centered, and become more effective in their work.

Course dates: May 4 - May 31

*Cost: \$45 (member) or \$145 (non-member) | Available for 1 graduate credit through ASU
Facilitator: Stephanie Fast (Littleton Education Association)*



**English
Learner
PD Course**

The Triple E Catalyst: Engaging Enhancing and Extending K-5 Learning with Purposeful Tech

K-5 educators will dive into the Triple E Framework to master a tool-agnostic approach that ensures technology integration truly Engages, Enhances, and Extends student learning. Participants will learn to act as a "catalyst" for student reflection, shifting toward a facilitated, learner-centered model that increases instructional efficiency.

Course dates: May 4 - June 14

*Cost: \$90 (member) or \$190 (non-member) | Available for 2 graduate credits through ASU
Facilitator: Juliana Felten (Jefferson County Education Association)*



Coddling of the American Mind: Creating Anti-Fragile Students

In this thought-provoking book study, educators will explore *The Coddling of the American Mind* by Greg Lukianoff and Jonathan Haidt. This book examines how well-intentioned cultural shifts—such as an emphasis on emotional safety and the avoidance of discomfort—may be unintentionally harming students' resilience, critical thinking, and mental well-being. This book study is ideal for teachers, administrators, and educational professionals who are interested in fostering resilience, critical thinking, and healthy discourse in their students.

Course dates: May 4 - June 14

*Cost: \$90 (member) or \$190 (non-member) | Available for 2 graduate credits through ASU
Facilitator: Katie Guerrero (Cherry Creek Education Association)*



**Behavioral/
SPED Course**
**English
Learner
PD Course**

Hidden Potential: Cultivating Growth and Resilience in Every Learner

This professional learning course invites educators to explore *Hidden Potential: The Science of Achieving Greater Things* by Adam Grant, a transformative look at how growth, character, and persistence—not innate talent—drive true success. Through engaging discussions and reflective activities, participants will examine how Grant's research-based insights can inform classroom practices, student motivation, and equitable learning environments. Educators will analyze how to cultivate resilience, foster a culture of continuous improvement, and help all learners—especially those who may not shine immediately—discover and develop their hidden potential. The course will also challenge participants to reflect on their own professional growth and instructional mindsets, promoting a shift from focusing on performance to valuing progress and perseverance.

Course dates: May 4 - June 28

*Cost: \$135 (member) or \$235 (non-member) | Available for 3 graduate credits through ASU
Facilitator: Katie Guerrero (Cherry Creek Education Association)*



Kids These Days: A Game Plan for (Re)Connecting with Those We Teach, Lead, & Love

The essence of this book is centered around the reminder that teachers need to be okay first in order to be the best teachers they can be for their students. The students need those teachers who are struggling now more than ever. We are teaching in some of the most difficult times in educational history. Not only students but teachers are more disconnected than ever before. Dr. Jody Carrington will take you on a journey through reconnection and regulation with your students and yourself. This course is for those who need a reminder that the work they are doing is important and it matters. You are changing lives. You are making a difference. This course will allow you to reflect deeply on your teaching practices, analyze emotional regulation, strengthen your relationship-building with students, develop and utilize strategies to get you through the tough times, remember your WHY, and help you navigate some of the toughest times we are facing as teachers.

Course dates: May 4 - June 28

Cost: \$135 (member) or \$235 (non-member) | Available for 3 graduate credits through ASU

Facilitator: Michelle Hagerman (Mesa Valley Education Association)



Prodigy Math in the Classroom

Dive into your student's favorite game-based learning platform: Prodigy! This online website is free for teachers and students. Best of all, students WANT to play it! Prodigy Math is designed for students in 1st-8th grade with over 1,5000 teacher-made skills. In Prodigy Math, students are wizards engaged in epic math battles. This is a number one fan-favorite website that your students will love! In this course, teachers will actively participate in online learning to explore how to use Prodigy Math, a powerful tool to enhance student engagement in math as well as inform teaching practices. Participants will explore what Prodigy offers, how it works and then learn how to create their own assignments, assessment, challenges, quizzes, and more. Participants will envision how to implement prodigy in their classroom as a supplemental resource to boost math achievement, engagement, and reinforce learning from their curriculum.

Course dates: May 4 - June 28

Cost: \$135 (member) or \$235 (non-member) | Available for 3 graduate credits through ASU

Facilitator: Michelle Hagerman (Mesa Valley Education Association)



Cultivating Teacher Wellness Through Art

Teaching can be incredibly rewarding, but it also comes with stress and emotional demands. Cultivating Teacher Wellness Through Art is a six-week course designed to help educators use art as a tool for self-care, mindfulness, and stress relief. Participants will explore a variety of artistic practices, including visual journaling, movement, music, and mindful observation, to enhance their well-being. No prior art experience is necessary! By the end of the course, educators will have a personalized creative wellness plan to sustain their mental and emotional health throughout the school year.

Course dates: May 4 - June 28; June 7 - August 2

Cost: \$135 (member) or \$235 (non-member) | Available for 3 graduate credits through ASU

Facilitator: Lindsay Johnson (Eagle County Education Association)



Anger Management for Educators

Anger is a normal emotion that everyone feels from time to time. This class, with the aid of *The Cognitive Behavioral Workbook for Anger: A Step-By-Step Program for Success*, will help you to use a variety of tools, exercises, and self-mastery methods to overcome destructive anger. You will be able to recognize and overcome anger triggers, extinguish anger in the heat of the moment, stop the cycle of blame, tolerate negative emotions, deal with difficult people, and repair broken relationships.

Course dates: May 4 - June 14; June 15 - July 26

Cost: \$135 (member) or \$235 (non-member) | Available for 3 graduate credits from ASU

Facilitator: Catherine Lee (District Twelve Educators' Association)



Ask Powerful Questions: Create Conversations That Matter

By changing the way we ask questions, we can transform conversations in a way that will allow us to truly see, hear, and understand where those around us are coming from. The book *Ask Powerful Questions: Create Conversations that Matter* will help you to lay the foundation for trust, psychological safety, productivity, impact, and a culture of connection.

Course dates: May 4 - June 14; June 15 - July 26

Cost: \$135 (member) or \$235 (non-member) | Available for 3 graduate credits through ASU

Facilitator: Catherine Lee (District Twelve Educators' Association)



Stress Management for Educators

Do you have stress in your life from work, family, friends, finances, health, technology, etc.? Do you feel burned out with all that you are asked to do? Is your current stress level okay, but you want methods to manage stress in the future? This class will help you learn how stress affects you in the short and long term, identify the stressors in your life, and practice techniques that take less than ten minutes to lower stress and boost the quality of life.

Course dates: May 4 - May 31

Cost: \$90 (member) or \$190 (non-member) | Available for 2 graduate credits through ASU

Facilitator: Catherine Lee (District Twelve Educators' Association)



Take Time for You: Self-Care Action Plans for Educators

As educators, we tend to put ourselves last. It is important to make ourselves a priority so that we can lead a healthier and happier life. It will allow us to then be the best versions of ourselves in and outside of the classroom. In the book *Take Time for You: Self Care Action Plan for Educators*, you will create a plan each week to make sure you are taking care of yourself by meeting each of the six levels of Maslow's hierarchy of needs. These needs are as follows: (1) physiological, (2) safety, (3) belonging, (4) esteem, (5) self-actualization, and (6) transcendence.

Course dates: May 4 - June 14; June 15 - July 26

Cost: \$135 (member) or \$235 (non-member) | Available for 3 graduate credits from ASU

Facilitator: Catherine Lee (District Twelve Educators' Association)



Understanding Executive Function & the Science of Motivation

Executive Functions (EF) lay the foundation for the development of critical life skills throughout one's life. For students, these skills are necessary for learning, dealing with peer pressure & conflict, problem-solving, handling emotions, setting goals and so much more. Through this course, participants will learn how executive function skills and motivation form through brain development, define what EF skills are, and understand their importance. This course will also look at some common disorders seen in schools that can impact EF (ex. ADHD, ASD, Anxiety) as more students are needing EF supports through IEPs and 504s.

Course dates: May 4 - June 14; June 22 - August 2

Cost: \$135 (member) or \$235 (non-member) | Available for 3 graduate credits through ASU

Facilitator: Heather Jung (Denver Classroom Teachers' Association)



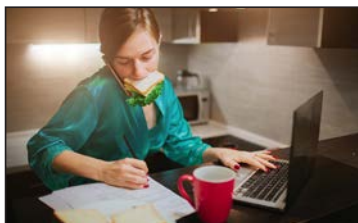
Let's Talk Math! Math Routines that Foster Reasoning, Thinking, and Student Talk

In this course, teachers will explore several different math routines that get students talking about math in a fun and non-intimidating way. These routines can be easily built into an already existing lesson plan because they only take 5-10 minutes. Help build consistency in your math classroom so students are using math reasoning skills and critical thinking without even realizing they're doing math! Participants will also connect math routines to the Standards for Mathematical Practices (SMP).

Course dates: May 4 - June 7

Cost: \$45 (member) or \$145 (non-member) | Available for 1 graduate credit through ASU

Facilitator: Lindsey Mater (Poudre Education Association)



Time Management for the Educator, Counselor, and Administrator

Can't find the time for a moment to yourself? Feeling pressured and like you need to reset? This class gives you a set of strategies to help you make sure you're taken care of so you can take care of others in your important role in education.

Course dates: May 4 - May 31

Cost: \$90 (member) or \$190 (non-member) | Available for 2 graduate credits through ASU

Facilitator: Elizabeth Sedalnick (District Twelve Educators' Association)



Understanding Trauma

This course is designed to help you understand what trauma is, how our students are experiencing it, and how to work with students who have experienced trauma. This introductory course will look at the definition of trauma and how our students may be exhibiting signs of trauma that are masked as other behavioral issues, and how we can make changes in our perceptions and actions to support all students.

Course dates: May 4 - May 31

Cost: \$90 (member) or \$190 (non-member) | Available for 2 graduate credits through ASU

Facilitator: Elizabeth Sedalnick (District Twelve Educators' Association)



Personal Financial Literacy for Colorado Educators: Making the Most of Your PERA Pension, Employer Benefits, and Investments

Being an educator is a very difficult job. It's even more difficult if you're worried about your personal financial situation. Many educators are confused and/or intimidated by finances, and "don't know what they don't know". This stress can't help but impact their job performance. So this class is designed to not only make a difference in your personal lives, but if it can help you relieve that stress, it will make you even better educators and do an even better job of meeting the needs of our students in these challenging times. This class will also help prepare you to better teach the Colorado Academic Standards for K-12 Personal Financial Literacy (PFL).

Course dates: May 4 - June 20; May 29 - July 19; May 31 - July 18

Cost: \$135 (member) or \$235 (non-member) | Available for 3 graduate credits through ASU

Facilitators: Karl Fisch (CEA Retired); Robert Smith (Denver Classroom Teachers' Association)



The Basics of Speaking Spanish

Many of our students and their families speak Spanish at home. When having meetings with these families, it is often nice to know that basics of introductions, and how to construct basic sentences using nouns specific to the classroom and the students' performance. This class is geared toward teaching those basics, as well as an introduction to some or the tools offered to help communication with this population of families. The primary outcome of this class is to have our Spanish speaking families feel more welcome and their voices heard with an open line of communication from their teachers.

Course dates: May 4 - June 20; May 31 - July 18

Cost: \$135 (member) or \$235 (non-member) | Available for 3 graduate credits through ASU

Facilitator: Bob Smith (Denver Classroom Teachers' Association)



English
Learner
PD Course

Reach All Readers: A Guide to Transform Your Literacy Instruction

Throughout this course, students will read the book called, Reach All Readers by Anna Geiger, also known as "The Measured Mom". This book not only looks at the why of the shift in reading instruction, but also incorporates the how by including resources that teachers can take back to their classroom the next day. Participants will contribute to discussions, make reflections on their current practice, participate in video shares, and create lesson plans.

Course dates: May 4 - June 14

Cost: \$90 (member) or \$190 (non-member) | Available for 2 graduate credits through ASU

Facilitator: Danielle Vinton (District Twelve Educators' Association)



Sold a Story: How the Three Cueing System has Failed Readers

Throughout this course, students will listen to six episodes of a Podcast called, "Sold a Story" by journalist Emily Hanford. She brings in multiple interviews from parents, educators, students and even Lucy Calkins, "the reading guru", to help us better understand the why behind the sudden urgency to change how we teach reading. Teachers will also read a variety of texts to help support the sudden shift and the science behind how this was a flawed system.

Course dates: May 4 - June 14

Cost: \$90 (member) or \$190 (non-member) | Available for 2 graduate credits through ASU
Facilitator: Danielle Vinton (District Twelve Educators' Association)



How the Special Needs Brain Learns

Students with special needs learn in unique ways. While reading *How the Special Needs Brain Learns*, Dr. David A. Sousa will guide you through an overview of the special needs brain, including the anatomy and physiology of the brain and its ability to learn, process information, and store memories. We will cover topics such as the role of emotions in learning, the importance of positive reinforcement, and the use of technology in the classroom. Additionally, the book provides strategies and activities that can be used to help students with special needs reach their full potential.

Course dates: May 11 - June 28; June 15 - August 2

Cost: \$135 (member) or \$235 (non-member) | Available for 3 graduate credits through ASU
Facilitator: Sarah Adams (Jefferson County Education Association)



An Anxiety-Informed Classroom: Supporting Students with Obsessive-Compulsive Disorder

Obsessive-Compulsive Disorder, a misunderstood and challenging anxiety disorder, causes unwanted intrusive thoughts and compulsions in about 5 elementary students and 20 high school students in an average-sized school every year (IOCDF, 2009) and can greatly affect their ability to focus on their learning in school. This course will teach you strategies to support and understand better your courageous students with OCD.

Course dates: May 11 - June 21

Cost: \$135 (member) or \$235 (non-member) | Available for 3 graduate credits through ASU
Facilitator: Riana Bichler (Mesa Valley Education Association)



A World of Numbers: Decoding Dyscalculia

One in 20 students struggle with Dyscalculia, which affects the ability to calculate numbers, yet it is rarely addressed in K-12 settings. This course is designed to meet Colorado SPED and Behavioral Health licensure standards, teaching you how to identify symptoms and build an inclusive classroom that supports Dyscalculic learners. This course is appropriate for K-12 math teachers and any educational professional who supports math learners.

Course dates: May 11 - June 21

Cost: \$90 (member) or \$190 (non-member) | Available for 2 graduate credits through ASU
Facilitator: Riana Bichler (Mesa Valley Education Association)



Beat Teacher Burnout with Better Boundaries

This quick and tactical guide is an essential read for every educator who struggles to juggle all the demands of their classroom, campus, and personal life. It is critical for those who want to thrive in teaching, without having to sacrifice everything else. This course gives you scripts and real-world scenarios to stop being a people pleaser without giving up any of your effectiveness as an educator. This course will cover how to live a plentiful life outside of the world as an educator by saying no to things that aren't life giving or important to you, by focusing on boundaries in every aspect of your life.

Course dates: May 11 - June 8

Cost: \$45 (member) or \$145 (non-member) | Available for 1 graduate credit through ASU
Facilitator: Stephanie Fast (Littleton Education Association)



High Leverage Practices for Students with Disabilities

In this course, explore 22 high-leverage practices developed and published by the Council for Exceptional Children (CEC), in partnership with the Collaboration for Effective Educator Development, Accountability and Reform (CEEDAR). These HLP's are intended to address the most critical practices that every K-12 educator should utilize. The selected practices are used frequently in classrooms and have been shown to improve student outcomes if successfully implemented. Participants will have an opportunity to understand the practices, dig into the research and rationale, and see videos of teachers in action modeling the components of these research based practices.

Course dates: May 11 - June 21

*Cost: \$90 (member) or \$190 (non-member) | Available for 2 graduate credits through ASU
Facilitator: Erin Grodeska (Aurora Education Association)*



AI-Powered Lesson Planning: Harnessing Technology for Effective Teaching

In this course, educators will engage in online learning to deepen their understanding of integrating AI tools into effective unit and lesson planning. Participants will explore various AI platforms, including ChatGPT, Copilot, Teach Aid, and other resource creation tools, applying their features to develop comprehensive lesson plans and assessments. By the end of the course, each educator will produce a complete unit and lesson plan ready for classroom implementation.

Course dates: May 11 - June 21; June 22 - August 2

*Cost: \$90 (member) or \$190 (non-member) | Available for 2 graduate credits through ASU
Facilitator: Lindsay Johnson (Eagle County Education Association)*



Behavior Breakthrough: 12 Skills to Transform Behavior

In this eight week book study, we will learn behavior modification strategies to implement in the classroom to decrease maladaptive behaviors and increase desired behaviors, as detailed in the text Behavior Breakthrough: Twelve Skills To Transform Behavior At Home And In The Classroom, written by Bailey Payne, BCBA and Jen Lill Brown.

Course dates: May 11 - July 6; June 1 - July 27

*Cost: \$135 (member) or \$235 (non-member) | Available for 3 graduate credits through ASU
Facilitator: Angelina Kelly (Cherry Creek Education Association)*



Mindfulness for Educators

This program is a holistic training for educators and members of the learning community. The sessions and materials help deliver yoga and mindfulness essentials to beginners and experienced practitioners. While participants are always welcome to delve deeper into any of the areas we cover, we aim to deliver a sampling of different styles of yoga and meditation so that students can experience some of the options available to them while creating a long relationship with yoga, meditation, self-care and mindfulness.

Course dates: May 11 - June 21; June 15 - July 28

*Cost: \$135 (member) or \$235 (non-member) | Available for 3 graduate credits through ASU
Facilitator: Jan Pratt (Colorado Education Association - Retired)*



Smart But Scattered: Executive Functioning for Every Student

Unlock the secrets of executive skills in this course designed for educators while diving deep into the eleven key components of executive functioning, including planning, organization, time management, emotional regulation, and cognitive flexibility. You will gain a comprehensive understanding of these essential skills and their practical application in educational settings. Additionally, learners will discover effective strategies for identifying strengths and weaknesses in executive functioning and learn how to implement evidence-based interventions tailored to diverse student needs.

Course dates: May 17 - July 2; June 7 - August 2

*Cost: \$135 (member) or \$235 (non-member) | Available for 3 graduate credits from ASU
Facilitator: Julie Arnold (Johnstown-Milliken Education Association)*



In Teachers We Trust

How can developing models of trust in our school systems lead to better outcomes for our students and renewed purpose for our educators? Find out in this book study where you will actively learn about the trust-based educational system about which Finland boasts and create a trust-based plan for your own learning communities. This course is appropriate for all educational professionals at any grade level. Teacher librarians, instructional coaches, and administrators are also invited to join us; they will be asked to work on a planning template in a discipline of their choice.

Course dates: May 18 - June 28

Cost: \$90 (member) or \$190 (non-member) | Available for 2 graduate credits through ASU

Facilitator: Riana Bichler (Mesa Valley Education Association)



Atomic Habits: Changing Your Systems to Go from Good to Great

Learn how create systems that lead to good habits, breaking bad ones, and overcoming a lack of motivation. This book study will reshape the way you think about progress and success, and give you the tools and strategies you need to transform your habits.

Course dates: May 18 - June 14; July 6 - August 2

Cost: \$45 (member) or \$145 (non-member) | Available for 1 graduate credit through ASU

Facilitator: Amy Bohan (Westminster Education Association)



Empowering Every Voice Using Language Focused Strategies

This course explores *7 Steps to a Language-Rich, Interactive Classroom* by John Seidlitz and Bill Perryman, a practical guide for increasing student engagement and academic language development. Participants will examine each of the seven steps and learn how to create environments where all students have structured opportunities to listen, speak, read, and write daily. Educators will reflect on their current instructional practices and design lessons and routines that make content comprehensible and interactive.

Course dates: May 18 - June 14

Cost: \$45 (member) or \$145 (non-member) | Available for 1 graduate credit through ASU

Facilitator: Amy Bohan (Westminster Education Association)



*Behavioral/
SPED Course*

The Dyslexic Advantage: Unlocking the Hidden Potential of the Dyslexic Brain

This course explores *The Dyslexic Advantage* by Brock and Fernette Eide as a framework for understanding dyslexia through a strengths-based lens. Rather than focusing solely on challenges, participants will examine how dyslexic thinking is associated with unique cognitive advantages in areas such as big-picture thinking, creativity, problem-solving, and innovation. Educators will learn to recognize the diverse profiles of dyslexic learners and challenge deficit-based narratives that often shape classroom practices and educational systems.

Course dates: May 18 - July 12

Cost: \$135 (member) or \$235 (non-member) | Available for 3 graduate credits through ASU

Facilitator: Katie Guerrero (Cherry Creek Education Association)



*Behavioral/
SPED Course*

The Epic IEP: A Powerful Playbook for Parents, Educators, and Advocates Navigating the Special Education Process

This eight-week book study explores *The EPIC IEP* by Karen Mayer Cunningham, it is designed for special education teachers, general education teachers and related services providers who want to deepen their understanding of the IEP process and their collaborative role within it. Through reflection, discussion and practical application participants will strengthen their ability to collaborate effectively, write aligned and individualized plans and implement IEP's in ways that directly impact student growth in the classroom.

Course dates: May 18 - July 13

Cost: \$135 (member) or \$235 (non-member) | Available for 3 graduate credits through ASU

Facilitator: Angelina Kelly (Cherry Creek Education Association)



The Power of Mattering: Turning Connection into Action

This course explores the concept of mattering—the belief that every person is significant and valued—and how it can transform classroom environments, school culture, and student outcomes. Drawing on *The Power of Mattering* by Zach Mercurio, participants will learn practical strategies to help students feel seen, appreciated, and essential members of the learning community. Blending research-based insights with hands-on applications, this course equips educators with actionable tools to intentionally weave mattering into their daily teaching practice.

Course dates: May 24 - July 26

Cost: \$135 (member) or \$235 (non-member) | Available for 3 graduate credits through ASU

Facilitator: Julie Arnold (Johnstown-Milliken Education Association)



Teaching with Impact: What Great Teachers Do Differently

This course explores the powerful principles from *What Great Teachers Do Differently* by Todd Whitaker, focusing on the beliefs and practices that set highly effective educators apart. Through engaging reflection and discussion, participants will examine how great teachers build strong relationships, maintain high expectations for all students, create positive classroom environments, and make intentional decisions that lead to student success. Educators will connect Whitaker’s insights to their own teaching practice while developing practical strategies to strengthen classroom culture, increase student engagement, and enhance their overall impact as educators.

Course dates: May 24 - July 12

Cost: \$90 (member) or \$190 (non-member) | Available for 2 graduate credits through ASU

Facilitator: Julie Arnold (Johnstown-Milliken Education Association)



Fostering Regulation: Practical Strategies for a Balanced Classroom

Teachers will actively participate in online learning to further develop their understanding of the different types of regulation and develop strategies for how to set up their classroom to support individuals with different regulation needs. Specific applications will be made to practice, as teachers will create a classroom design demonstrating strategies they have learned.

Course dates: May 24 - July 4

Cost: \$90 (member) or \$190 (non-member) | Available for 2 graduate credits through ASU

Facilitator: Alexandra Wyman (Jefferson County Education Association)



The Let Them Theory: A Life-Changing Tool That Millions of People Can't Stop Talking About

This course is a book study of Mel Robbins’ latest book, *The Let Them Theory: A Life-Changing Tool That Millions of People Can't Stop Talking About*. Teachers will actively participate in online learning to further develop their understanding of their own emotional responses to a variety of situations and be guided in not only becoming more aware of their responses but also be given tools for how to respond rather than react.

Course dates: May 24 - June 20

Cost: \$45 (member) or \$145 (non-member) | Available for 1 graduate credit through ASU

Facilitator: Alexandra Wyman (Jefferson County Education Association)

All class dates are subject to change based on facilitator availability. All classes are subject to cancellation if fewer than five students enroll by the official class start date.



The Power of Showing Up: How Parental Presence Shapes Who Our Kids Become and How Their Brains Get Wired

In this engaging book study, educators will explore *The Power of Showing Up* by Dr. Daniel J. Siegel and Dr. Tina Payne Bryson, a groundbreaking look at how secure attachment profoundly shapes a child's development, learning, and emotional well-being. Though this book was initially designed to assist with parenting, it offers an opportunity to apply neuroscience to classrooms in a practical manner. Participants will discover how the "Four S's" (Safe, Seen, Soothed, and Secure) can be applied to foster stronger relationships, resilience, and regulation in students.

Course dates: May 24 - June 20

*Cost: \$45 (member) or \$145 (non-member) | Available for 1 graduate credit through ASU
Facilitator: Alexandra Wyman (Jefferson County Education Association)*



Number Sense Routines

Deep understanding of number sense is the foundation for developing math skills in young learners. The daily use of 5 to 15 minute exercises will help students build number sense. Participants in this book study will learn how easily number sense can be developed and about ways how to implement responsive number sense routines no matter what curriculum materials teachers use.

Course dates: May 25 - June 21

*Cost: \$45 (member) or \$145 (non-member) | Available for 1 graduate credit through ASU
Facilitator: Larisa Baskin (Aurora Education Association)*



Overcoming Dyslexia

Participants will gain knowledge that provides the foundation for the latest science-based diagnosis of dyslexia and effective interventions for reading difficulties. The course dives deep into how skilled reading develops and when to expect the successive milestones. Participants will learn to recognize the specific clues that should alert them that reading is not progressing smoothly. This course will provide educators with practical to help struggling readers.

Course dates: May 25 - July 19

*Cost: \$90 (member) or \$190 (non-member) | Available for 2 graduate credits through ASU
Facilitator: Larisa Baskin (Aurora Education Association)*



Set Boundaries, Find Peace

Setting boundaries is an essential skill for maintaining healthy relationships and promoting personal well-being. In this course based on the book "Set Boundaries, Find Peace" by Nedra Glover Tawwab you will learn how to establish and maintain healthy boundaries in your personal and professional environments to improve the quality of your life.

Course dates: May 25 - June 18

*Cost: \$135(member) or \$235(non-member) | Available for 3 graduate credits through ASU
Facilitator: Larisa Baskin (Aurora Education Association)*



Because of a Teacher: Stories of the Past to Inspire the Future of Education

This course serves as a reminder that you are making a difference as a teacher, in both small and significant ways. Day in and day out, you are changing lives. *Because of a Teacher* is a compilation of stories dedicated to teachers past, present, and future. Whether you're a first-year teacher or 30 years deep, this course will help you remember why you chose this profession and uplift you during the difficult times of burnout and exhaustion. These stories will warm your heart, have you nodding along, and make you feel seen. This is a must-read for any educator!

Course dates: May 25 - July 19

*Cost: \$135 (member) or \$235 (non-member) | Available for 3 graduate credits through ASU
Facilitator: Michelle Hagerman (Mesa Valley Education Association)*



5 Practices for Orchestrating Productive Mathematics Discussions

Teachers will actively participate in online learning to develop an understanding of Margaret S. Smith's and Mary Kay Stein's 5 Practices for Orchestrating Productive Mathematics Discussions through readings, discussions, and application of learning through a lesson plan that represents the 5 Practices. This course is designed for elementary level math teachers.

Course dates: May 25 - July 26

*Cost: \$135 (member) or \$235 (non-member) | Available for 3 graduate credits through ASU
Facilitator: Kimberly Komar (Denver Classroom Teachers' Association)*



Doable Differentiation: 12 Strategies to Meet the Needs of All Learners

Doable Differentiation: 12 Strategies to Meet the Needs of All Learners is a book study that supports and teaches educators ways to differentiate for all students in a class. It expands understanding about what differentiation is, why we do it, and why it is actually possible throughout the day. We will create lesson plans to implement these in an authentic way to your class. We will reflect collectively. And we will learn how to be even more inclusive, engaging, and individualized educators!

Course dates: May 25 - June 22

*Cost: \$90 (member) or \$190 (non-member) | Available for 2 graduate credits through ASU
Facilitator: Ellie Lucy (Denver Classroom Teachers' Association)*



Finding Joy: Inside & Outside of the Classroom (Part 1)

This course is designed for busy educators like you! This online, move-at-your-own pace course consists of 10 thought-provoking, inspirational podcasts that you can listen to on-the-go paired with simple, practical resources and tools designed to spark your curiosity, creativity, and passion for teaching. This course will be sure to rejuvenate you, deepen your teaching practice, and give you the skills you need to find joy inside and outside of the classroom!

Course dates: May 25 - August 2

*Cost: \$135 (member) or \$235 (non-member) | Available for 3 graduate credits through ASU
Facilitator: Nicole Schmidt (St. Vrain Valley Education Association)*



**Behavioral/
SPED Course**

Foundations of Special Education and Behavioral Health

This course has been designed to create a foundation for all to meet the CDE licensure renewal requirement for Behavioral Health. It is focused on learning about culturally responsive, trauma- and evidence-informed practices, and increasing awareness of laws and practices related to Special Education. The course will focus on 3 main elements: Academics and Behavior with a Trauma and Equity Lens, Special Education Law, and Behavior, Special and General Education Collaboration.

Course dates: May 31 - July 4; June 28 - August 1

*Cost: \$45 (member) or \$145 (non-member) | Available for 1 graduate credit through ASU
Facilitator: Anna Bishop (Center Education Association)*



**Behavioral/
SPED Course**

**English
Learner
PD Course**

How to Differentiate Instruction in Academically Diverse Classrooms

In this 6-week book study, educators will explore the key principles of differentiated instruction and learn how to design lessons that respond to differences in student readiness, interest, and learning profile. Each week includes structured readings, practical classroom-based assignments, collaborative discussions, and independent reflection. By the end of the course, teachers will have developed a personalized Differentiation Action Plan to guide continued growth and implementation in their own classrooms.

Course dates: June 1 - July 12

*Cost: \$90 (member) or \$190 (non-member) | Available for 2 graduate credits through ASU
Facilitator: Amber Andrew (District Twelve Educators' Association)*



**English
Learner
PD Course**

Gifted and Unequal

Educators will be empowered to understand and address the persistent disparities in access to gifted education programs across different demographic groups, including socioeconomic, cultural and linguistic. Educators will critically examine current identification and referral practices to uncover potential biases and barriers, and learn how to advocate for equitable policies within their schools and districts. Through practical strategies and differentiated approaches, educators will be equipped to create inclusive classrooms and schools that recognize and nurture diverse talents, fostering an environment where every student can thrive and reach their full potential.

Course dates: June 1 - July 26

Cost: \$135 (member) or \$235 (non-member) | Available for 3 graduate credits through ASU

Facilitator: Rose Auferio (Denver Classroom Teachers' Association)



**English
Learner
PD Course**

MagicSchool Ready: Empowering Every Teacher

MagicSchool Ready: Empowering Every Teacher addresses the "AI Literacy" gap by moving educator practice from experimental use to strategic competence. Furthermore, the inclusion of MagicStudent training ensures teachers can guide students to use AI responsibly, fostering digital citizenship. This course empowers educators to "save time" on planning while simultaneously closing the opportunity gap through high-quality, differentiated resources.

Course dates: June 1 - July 26

Cost: \$135 (member) or \$235 (non-member) | Available for 3 graduate credits through ASU

Facilitator: Rose Auferio (Denver Classroom Teachers' Association)



AI in the Classroom: Empowering Tool or Emerging Threat?

This course explores the dynamic intersection of Artificial Intelligence (AI) and education, particularly focusing on its implications for adult educators. It aims to dissect the dual perspectives on AI as both a potentially transformative educational tool and a perceived threat to traditional teaching roles. Through a critical examination of current technologies, perspective analysis and personal exploration, participants will engage in a comprehensive study of AI's role in shaping the future of education. The course is designed to equip educators with the knowledge and skills to critically assess the potential of AI to enhance teaching and learning while also considering the ethical, practical, and pedagogical challenges it presents.

Course dates: June 1 - July 7

Cost: \$90 (member) or \$190 (non-member) | Available for 2 graduate credits through ASU

Facilitator: Edmond Bedu-Annan (District Twelve Educators' Association)



Skills Students Actually Need in a Post-AI World

While AI tools can enhance learning, they have also contributed to a growing loss of essential academic and cognitive skills. Many educators are observing decreased student perseverance, weakened critical thinking, shallow comprehension, limited originality, and increased dependence on technology to complete basic tasks. This course is designed to combat that loss. Through a highly practical, classroom-centered approach, educators will learn how to reclaim essential skills by redesigning instruction to strengthen critical thinking, creativity, communication, collaboration, adaptability, and independent problem-solving.

Course dates: June 1 - July 7

Cost: \$90 (member) or \$190 (non-member) | Available for 2 graduate credits through ASU

Facilitator: Edmond Bedu-Annan (District Twelve Educators' Association)

All class dates are subject to change based on facilitator availability. All classes are subject to cancellation if fewer than five students enroll by the official class start date.



English
Learner
PD Course

Using ChatGPT To Save Planning Time

Teachers will comprehend and utilize the tools within the ChatGPT system to decrease their lesson planning time. Teachers will be able to use the system as a thought partner for creating engaging lessons, creating assessments and rubrics, and making lesson modifications for student needs.

Course dates: June 1 - July 7; July 7 - August 2

Cost: \$90 (member) or \$190 (non-member) | Available for 2 graduate credits through ASU

Facilitator: Edmond Bedu-Annan (District Twelve Educators' Association)



English
Learner
PD Course

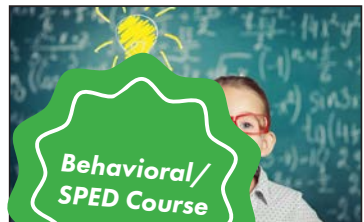
Bridging Language and Learning for CLD Student Populations

This 9-week professional development course fulfills the CLDE PD requirement for license renewal and equips educators with the knowledge and tools to support Culturally and Linguistically Diverse (CLD) student populations. Participants will explore theories of language acquisition while learning to implement research-based strategies, create progress monitoring tools, and assessments. Participants will engage in discussions, reflect on their instructional practices, and adapt strategies and activities to better support CLD students.

Course dates: June 1 - July 26

Cost: \$135 (member) or \$235 (non-member) | Available for 3 graduate credits through ASU

Facilitator: Anna Bishop (Center Education Association)



Behavioral/
SPED Course

Visual Thinking: The Hidden Gifts of People Who Think in Pictures, Patterns, and Abstractions

Educators will actively participate in an online book study of Temple Grandin's book, *Visual Thinking: The Hidden Gifts of People Who Think in Pictures, Patterns, and Abstractions*.

Participants will increase their understanding of thinking types as well as consider the perspective of cognition in the neurodiverse population. Educators will reflect on ways to differentiate instructional practices to embrace and foster the strengths and challenges of various thinking types.

Course dates: June 1 - July 6; June 8 - July 13

Cost: \$45 (member) or \$145 (non-member) | Available for 1 graduate credit through ASU

Facilitator: Jessica Bush (Brighton Education Association)



A Fresh Look At Phonics: Common Causes of Failure and 7

Ingredients for Success

In this 6-week professional development book study course, educators will read *A Fresh Look at Phonics* by Wiley Blevins which focuses on the "seven critical ingredients of phonics teaching that produce the greatest student learning gains - readiness skills, scope and sequence, blending, dictation, word awareness, high-frequency words, and reading connected texts." Participants will contribute to class discussions, reflect on their own practice, and transform ideas and activities to support their students.

Course dates: June 1 - July 12

Cost: \$90 (member) or \$190 (non-member) | Available for 2 graduate credits through ASU

Facilitator: Leigh Ann Eucker (Poudre Education Association)



Podcasts for Educators

In this course, teachers will actively participate in online learning to explore podcasts as they relate to our world of education. This 4-week course is designed for educators who want to explore the world of podcasts and how the information presented can be used to enhance their teaching and engage students. Each week, participants will listen to a selection of podcasts and engage in discussions with their peers about the content. Participants will also develop their critical thinking skills and discuss how to incorporate podcasts into their teaching practice.

Course dates: June 1 - June 28

Cost: \$45 (member) or \$145 (non-member) | Available for 1 graduate credit through ASU

Facilitator: Leigh Ann Eucker (Poudre Education Association)



English Learner PD Course

Advanced Canva Skills

In this course, teachers will actively participate in online learning to explore advanced Canva skills to use in their classroom and with their students. Each week, we'll focus on advanced and interactive features, specifically of Canva Pro, like bulk editing, Canva Live, Magic Studio, collaborative whiteboard sessions to make learning fun, and more. Whether you're new or a Canva Pro, this course will help you create awesome materials for your classroom. By the end of the course, you'll have numerous skills to up your project and classroom content game that are ready to use with your students!

Course dates: June 1 - July 12

Cost: \$90 (member) or \$190 (non-member) | Available for 2 graduate credits through ASU
Facilitator: Leigh Ann Eucker (Poudre Education Association)



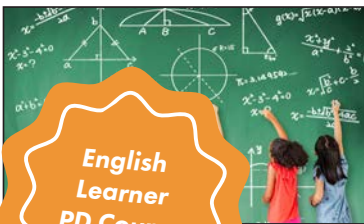
English Learner PD Course

Building Thinking Classrooms in Mathematics

In this 8-week book study course we will be discovering the magic of "Building Thinking Classrooms in Mathematics, Grades K-12" by Peter Liljedahl. Participants will explore the 14 teaching practices aimed at fostering a thinking-centered approach to mathematics instruction. Through reading, reflection, discussions, and assignments, participants will gain insights and practical strategies to enhance their teaching practices and create a classroom environment that promotes student engagement, problem-solving skills, and mathematical thinking.

Course dates: June 1 - August 2

Cost: \$135 (member) or \$235 (non-member) | Available for 3 graduate credits through ASU
Facilitator: Leigh Ann Eucker (Poudre Education Association)



English Learner PD Course

Mathematics Tasks for the Thinking Classroom, Grades K-5

In this 8-week professional development course, educators will dive into the "Mathematics Tasks for the Thinking Classroom" by Peter Liljedahl, focusing on strategies for Grades K-5. Participants will explore a variety of tasks designed to promote deep mathematical thinking and understanding among young learners. Through reading, discussions, activities, and reflective assignments, educators will learn how to implement engaging tasks that foster problem-solving skills, critical thinking, and a growth mindset in their classrooms.

Course dates: June 1 - August 2

Cost: \$135 (member) or \$235 (non-member) | Available for 3 graduate credits through ASU
Facilitator: Leigh Ann Eucker (Poudre Education Association)



English Learner PD Course

Mathematics Tasks for the Thinking Classroom, Grades 6-12

In this 8-week professional development course, educators will dive into the "Mathematics Tasks for the Thinking Classroom" by Peter Liljedahl, focusing on strategies for Grades 6-12. Participants will explore a variety of tasks designed to promote deep mathematical thinking and understanding among young learners. Through reading, discussions, activities, and reflective assignments, educators will learn how to implement engaging tasks that foster problem-solving skills, critical thinking, and a growth mindset in their classrooms.

Course dates: June 1 - August 2

Cost: \$135 (member) or \$235 (non-member) | Available for 3 graduate credits through ASU
Facilitator: Leigh Ann Eucker (Poudre Education Association)



The Anxious Generation: Insights for Educators

In "The Anxious Generation" social psychologist Jonathan Haidt explores the mental health challenges affecting today's children because of the decline of play-based childhoods since the 1980s—replaced by a phone-based culture in the 2010s. This course invites educators to examine the research surrounding rising levels of anxiety and depression in students, focusing on the cultural and developmental factors at play. Through collaborative discussions and practical applications, educators will develop a comprehensive action plan to support their students with the added benefit of enhancing their own well-being.

Course dates: June 1 - July 26

Cost: \$135 (member) or \$235 (non-member) | Available for 3 graduate credits through ASU
Facilitator: Ahsley Girodo (Summit County Education Association)



The Gifted Guild's Guide to Depth and Complexity: Finding Your Way Through the Framework

Are you ready to elevate your classroom and foster high-performing students through enhanced critical thinking skills in any content area? This course provides in-depth exploration of strategies using the Depth and Complexity framework. Participants will engage in hands-on activities and practical techniques designed to boost critical thinking, promoting deeper student engagement and mastery across subjects. Ideal for educators seeking to advance their instructional practices and challenge students to think critically at a higher level.

Course dates: June 1 - July 26

*Cost: \$90 (member) or \$190 (non-member) | Available for 2 graduate credits through ASU
Facilitator: Rachel Graham (Estes Park Education Association)*



Intermediate Phonics

Using *Teaching Phonics and Word Study in the Intermediate Grades* by Wiley Blevins as a foundational text, participants will explore practical, research-based strategies for developing students' decoding, spelling, and vocabulary skills. The course provides a comprehensive look at how phonics and word recognition intersect with fluency and comprehension, offering tools and techniques that can be applied across a range of grade levels and literacy needs. Through collaborative discussion, hands-on activities, and reflective practice, teachers will gain the confidence and skills to support diverse learners in becoming proficient and independent readers.

Course dates: June 1 - July 19

*Cost: \$90 (member) or \$190 (non-member) | Available for 2 graduate credits through ASU
Facilitator: Ashley Hyyppa (Cherry Creek Education Association)*



Appreciating Multiple Intelligences in the Classroom

Howard Gardner stated that "If we recognize [the combinations of intelligences], I think we will have at least a better chance of dealing appropriately with the many problems that we face in the world." What can we unlock in ourselves and in our students by encouraging and appreciating the broad range of abilities each of us brings to our relationships and learning environment? In this course, appropriate for educators of all levels, you will have the opportunity to look outside the narrow scope of traditional IQ scores and explore the notion that we all learn, contribute and excel in many different ways.

Course dates: June 1 - July 26

*Cost: \$135 (member) or \$235 (non-member) | Available for 3 graduate credits from ASU
Facilitator: Lainie Kirsch (Cherry Creek Education Association)*



Creating Concrete Classroom Management Strategies

In this class you will explore discipline and classroom management. We will look at successful classroom management and build a personal classroom plan where you can really identify goals, tier consequences, make productive rules, respond to positive behavior and lead with consistency.

Course dates: June 1 - July 5

*Cost: \$45 (member) or \$145 (non-member) | Available for 1 graduate credit from ASU
Facilitator: Lainie Kirsch (Cherry Creek Education Association)*



Hollywood Teachers and Real Life Heroes

What can we learn from well known teachers, whether they are fictional or the real deal? In this class you will further your own teaching practices by exploring and observing the teaching methods, philosophies and strategies of some of our favorites! From *Dangerous Minds* to *Stand and Deliver*, from Ron Clark to Bill Nye the Science Guy you will have the opportunity to look at many popular movie teachers and real-life educators and see what makes them so inspirational!

Course dates: June 1 - July 26

*Cost: \$135 (member) or \$235 (non-member) | Available for 3 graduate credits through ASU
Facilitator: Lainie Kirsch (Cherry Creek Education Association)*



Teaching the Explosive Child

Instead of focusing on getting our more challenging students to comply with adult directives, we can work towards improving flexibility and frustration tolerance so these same students can start learning lifelong skills! By exploring *The Explosive Child* by Dr. Ross Greene, we will attempt to switch our thinking that children choose poor behavior. Instead, we will look at Greene's idea that children do well when they can. This paradigm shift is applicable and crucial for all educators and school personnel.

Course dates: June 1 - July 26

Cost: \$135 (member) or \$235 (non-member) | Available for 3 graduate credits through ASU

Facilitator: Lainie Kirsch (Cherry Creek Education Association)



The Experienced Teacher

As an educator with at least five years of experience, you have already honed your craft, developed your teaching style, and navigated the challenges of the classroom. The Experienced Teacher course is designed to support you in building upon your strong foundation. You will take a look at reflection, mentorship, leadership, teaching philosophy and growth, student centered teaching versus teacher driven lessons, classroom management and culture, teacher professional development and avoiding burnout by keeping the spark alive and well in your teaching!

Course dates: June 1 - July 26

Cost: \$135 (member) or \$235 (non-member) | Available for 3 graduate credits through ASU

Facilitator: Lainie Kirsch (Cherry Creek Education Association)



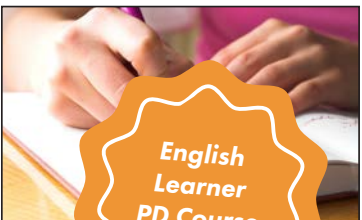
Teaching With Poverty In Mind

Educators will actively participate in this online book study to further develop their understanding and experience in teaching students of poverty. Participants will research what being poor does to kids' brains and what schools and educators can do about it. This course is appropriate for educators of any grade/content level as well as instructional coaches, interventionists, special service providers, and administrators.

Course dates: June 1 - June 28

Cost: \$45 (member) or \$145 (non-member) | Available for 1 graduate credit through ASU

Facilitator: Ellie Lucy (Denver Classroom Teachers' Association)



English
Learner
PD Course

The Writing Revolution: Creating Proficient Writers, Readers, and Critical Thinkers

Teachers will read the text *The Writing Revolution 2.0* by Judith C. Hochman and Natalie Wexler and learn about the evidence-based Hochman Method of writing. Participants will develop strategies and activities to incorporate into any curriculum, grade level, and content instruction to strengthen students' expository writing. Throughout the course, participants will learn how to build students' writing skills at the sentence level, and the paragraph level, develop note-taking strategies, and help students revise and summarize. For the final assignment, teachers will analyze students' writing work and create a lesson unit plan using the Writing Revolution strategies to meet student needs.

Course dates: June 1 - July 19

Cost: \$135 (member) or \$235 (non-member) | Available for 3 graduate credits through ASU

Facilitator: Katie Main (Denver Classroom Teachers' Association)

All class dates are subject to change based on facilitator availability. All classes are subject to cancellation if fewer than five students enroll by the official class start date.



**English
Learner
PD Course**

5 Pillars of Literacy: Developing Reading Fluency

Fluency is an integral skill for strong readers to be able to spend less mental capacity decoding words and more energy comprehending. Struggling readers often read disjointedly, lacking fluency and hindering their comprehension. Fluency is the bridge that connects phonics skills with a strong comprehension of text. Throughout this course, participants develop a deep understanding of what fluent readers are capable of doing and how to get their students there by implementing evidence-based instructional strategies that can be used in any literacy classroom and curriculum for various grades.

Course dates: June 1 - June 28

*Cost: \$90 (member) or \$190 (non-member) | Available for 2 graduate credits through ASU
Facilitator: Kaitlyn Main (Denver Teachers' Classroom Association)*



Developing Mathematical Reasoning: Avoiding the Traps of Algorithms

In this 8-week book study course we will dive into "Developing Mathematical Reasoning: Avoiding the Trap of Algorithms, Grades K-12" by Pamela Webber Harris. Participants will internalize what is meant by the slogan "math is figure-out-able" and the importance of teaching students increasingly sophisticated mathematical reasoning rather than relying on a set of rules for solving problems. Through reading, reflection, discussions, and assignments, participants will gain insights and practical strategies to enhance their teaching practices and ensure every student is capable of understanding and doing real math.

Course dates: June 1 - July 26

*Cost: \$135 (member) or \$235 (non-member) | Available for 3 graduate credits through ASU
Facilitator: Lindsey Mater (Poudre Education Association)*



**English
Learner
PD Course**

Creating Access and Opportunity in the Regular Classroom for English Learners

Classroom teachers have an opportunity to affect the lives of the children in their classrooms including students who are Culturally & Linguistically Diverse. This class focuses on each of the English Learner Professional Development Standards in Colorado and meets the requirements for CDE's "Culturally and Linguistically Diverse (CLD) Education training or professional development (PD)" for license renewal. Within this class, teachers will actively participate in online learning throughout six modules to build capacity to create access and opportunity in the regular classroom for language learners.

Course dates: June 1 - August 1

*Cost: \$135 (member) or \$235 (non-member) | Available for 3 graduate credits through ASU
Facilitator: Marie McGowan (Mesa Valley Education Association)*



An Educator's Guide to Powerful Conversations: Skills from Supercommunicators

How do your communication habits shape your classroom? This course invites you to take a closer look at the subtle—but powerful—ways communication influences student relationships, participation, and classroom culture. Using insights from Supercommunicators by Charles Duhigg, you'll examine how conversations work, why misunderstandings happen, and how small shifts in language and listening can make a meaningful difference.

Course dates: June 1 - July 11

*Cost: \$90 (member) or \$190 (non-member) | Available for 5 graduate credits through ASU
Facilitator: Marie McGowan (Mesa Valley Education Association)*

All class dates are subject to change based on facilitator availability. All classes are subject to cancellation if fewer than five students enroll by the official class start date.



English
Learner
PD Course

Back to Basics in the Classroom

Back to Basics in the Classroom is dedicated to reinforcing foundational skills and concepts, with a focus on hands-on learning and practical applications. This course offers a seamless integration of CLDE, SEL, IEP, and 504 strategies, blending traditional teaching methods with modern techniques. The goal is to help students regain confidence in core subjects by creating an inclusive, supportive learning environment. Teachers will be equipped with tools to personalize instruction, ensuring every student can grasp key concepts at their own pace and succeed in their individual learning journey.

Course dates: June 1 - June 30

*Cost: \$90 (member) or \$190 (non-member) | Available for 2 graduate credits through ASU
Facilitator: Amanda McIntyre (District Twelve Educators' Association)*



English
Learner
PD Course

Easy and Effective CLDE Strategies

Easy and Effective CLDE strategies class focuses on providing teachers with practical, easy-to-implement strategies for effectively supporting culturally, linguistically, and diverse English learners (CLDE). We will explore a range of tools and techniques to enhance student engagement, foster inclusive classroom environments, and promote language development. The session emphasizes simple yet impactful approaches to differentiate instruction, build on students' strengths, and create an atmosphere where every learner can thrive, regardless of their language or cultural background.

Course dates: June 1 - June 30

*Cost: \$90 (member) or \$190 (non-member) | Available for 2 graduate credits through ASU
Facilitator: Amanda McIntyre (District Twelve Educators' Association)*



Nature-Based Education: Strategies to Get Students Outside

This course explores the importance of nature-based education and provides practical strategies to help educators incorporate outdoor learning experiences into their curriculum. By the end of the course, participants will understand how to use nature as a teaching tool, develop outdoor activities, and create environments that foster student engagement and connection to the natural world.

Course dates: June 1 - August 2

*Cost: \$135 (member) or \$235 (non-member) | Available for 3 graduate credits through ASU
Facilitator: Victoria Wilson (Poudre Education Association)*



Building Balance: Creating Routines & Exploring Sustainable Systems for Educators

In this 8-week course, educators will explore and spend time creating sustainable routines and systems that support both their personal well-being and professional responsibilities. Through weekly planning, reflection, and resource exploration, participants will develop practical strategies for managing time, energy, and workload in a way that promotes balance and long-term sustainability. Throughout the course, participants will create and refine weekly plans, establish routines, and design systems that align with their roles as educators. They will also engage with articles and podcasts, reflect on their experiences, and connect their learning to real-life applications in both school and home settings.

Course dates: June 1 - August 2

*Cost: \$90 (member) or \$190 (non-member) | Available for 2 graduate credits through ASU
Facilitator: Brittany Osborn (Poudre Education Association)*

All class dates are subject to change based on facilitator availability. All classes are subject to cancellation if fewer than five students enroll by the official class start date.



Canva in the Classroom

Teachers will participate in online learning to explore how to use Canva for Education, a powerful graphic design and interactive collaborative platform, to enhance your classroom teaching and planning. Participants will first explore what Canva offers, how it works and then learn how to create visually appealing classroom materials, such as posters, fliers, handouts, and presentations. We will explore how to establish a classroom to keep your students' participation and collaboration in one place as well as integrating it into your current LMS.

Course dates: June 1 - August 2

*Cost: \$135 (member) or \$235 (non-member) | Available for 3 graduate credits through ASU
Facilitator: Brittany Osborn (Poudre Education Association)*

Genius Hour: A Choice-based Professional Development for Educators

In this 8-week professional development course, educators will explore their passions through the Genius Hour approach, setting and pursuing SMART goals for individual projects. Participants will choose their own texts to read, tailoring the experience to their professional development journey and what they are passionate in learning more about.

Course dates: June 1 - August 2

*Cost: \$135 (member) or \$235 (non-member) | Available for 3 graduate credits through ASU
Facilitator: Brittany Osborn (Poudre Education Association)*

Math Games with Bad Drawings Book Study

In this 8-week book study, educators will explore Math Games with Bad Drawings while actively engaging in activities that bring the games to life. Each week, participants will read selected sections of the book, dive into specific games using structured notecatchers, and reflect on the mathematical thinking behind them.

This course goes beyond reading—educators will experience the games firsthand by playing, analyzing, and reflecting on how they promote strategy, reasoning, and engagement across categories such as spatial, number, combination, risk and reward, and information games.

Course dates: June 1 - August 2

*Cost: \$90 (member) or \$190 (non-member) | Available for 2 graduate credits through ASU
Facilitator: Brittany Osborn (Poudre Education Association)*

Next-Level Canva: More Tools to Transform Education

Educators will explore and implement Canva's most recent 2025 feature updates to support instructional innovation. Participants will dive into four core focus areas—Visual Suite 2.0, Design with Data, AI Integration, and Canva Code—to discover how Canva's evolving tools can be used to create interactive content, personalize instruction, and support student creation. Rather than focusing on the basics, this course highlights newly released tools like Canva Sheets, Magic Charts, and Canva's AI and code capabilities. Educators will complete weekly design challenges such as creating dynamic data visuals, interactive lessons, and custom classroom tools—while also collaborating with peers through practical discussions.

Course dates: June 1 - August 2

*Cost: \$135 (member) or \$235 (non-member) | Available for 3 graduate credits through ASU
Facilitator: Brittany Osborn (Poudre Education Association)*

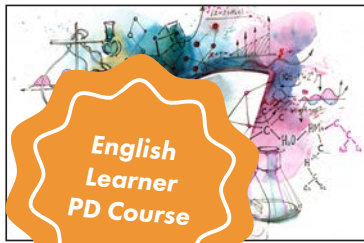
Summer Planning PD

This 8-week professional development course is designed to help educators prepare for their upcoming school year through intentional planning, reflection, and collaboration. Participants will engage in weekly activities, discussions, and practical tasks, spending approximately 5-6 hours per week setting and pursuing SMART goals for individual projects. This course will emphasize sharing ideas and tools to enhance teaching practices and build a supportive professional community all while preparing educators for their upcoming school year.

Course dates: June 1 - August 2

*Cost: \$135 (member) or \$235 (non-member) | Available for 3 graduate credits through ASU
Facilitator: Brittany Osborn (Poudre Education Association)*





The Science of Reading in Action

Educators will actively participate in online learning to further develop their understanding of the science of reading. This course will introduce and help educators understand new brain research on teaching students how to read. We will be doing a book study, researching, and creating hands-on activities with our students in our classrooms.

Course dates: June 1 - June 28

Cost: \$45 (member) or \$145 (non-member) | Available for 1 graduate credit through ASU
Facilitator: Barb Pedrett (Cherry Creek Education Association)



AI in Special Education to Support Students with Disabilities

Discover how artificial intelligence can transform your teaching practice and support every learner. This 8-week course explores AI tools for IEP writing, progress monitoring, accessibility, differentiation, and student self-advocacy. Through hands-on practice, podcasts, ethical discussions, and practical projects, you'll leave with classroom-ready strategies and tools you can use immediately. Designed for both special education and general education teachers.

Course dates: June 1 - July 26

Cost: \$90 (member) or \$190 (non-member) | Available for 2 graduate credits through ASU
Facilitator: Cammaron Sanders (Greeley Education Association)



Finding Joy in Math: From Anxiety to Confidence

Finding Joy is back - this time in the world of mathematics! For many students, math is the first subject where they begin to believe they are "not smart." This course explores how teachers can change that story. Learners will examine topics including math anxiety, the language of math, developing conceptual understanding and building computational fluency, addressing common student misconceptions, and integrating inquiry-based learning with purpose.

Course dates: June 1 - July 27

Cost: \$135 (member) or \$235 (non-member) | Available for 3 graduate credits through ASU
Facilitator: Nicole Schmidt (St. Vrain Valley Education Association)



Anxiety Management

Anxiety is on the rise, and seems to be present in ourselves, families, students, and communities. In this course, find out a little more regarding anxiety, and how to find coping strategies for yourself and others (including students), to live a healthier lifestyle. This course will focus on you, and how to change the narrative for yourself.

Course dates: June 1 - June 28

Cost: \$90 (member) or \$190 (non-member) | Available for 2 graduate credits through ASU
Facilitator: Elizabeth Sedalnick (District Twelve Educators' Association)



Building Relationships with Students

As we have learned during the Pandemic, building relationships with students is a key piece of what we do as educators. Without relationships, we will be unable to accomplish anything else with students. In this course, we take a look at what, why, and how to build relationships with our students.

Course dates: June 1 - June 28

Cost: \$90 (member) or \$190 (non-member) | Available for 2 graduate credits through ASU
Facilitator: Elizabeth Sedalnick (District Twelve Educators' Association)



The Boy Who Raised as a Dog Book Study

We will do a book study on *The Boy Who Was Raised as a Dog* to discuss trauma, how it affects children, and how we as educators can understand this and provide simple ideas to use in our relationships with all kids.

Course dates: June 1 - July 5

Cost: \$45 (member) or \$145 (non-member) | Available for 1 graduate credit through ASU
Facilitator: Jenny Shoen (Littleton Education Association)



Autism 101: Overall Information and Strategies to Use in Class

Teachers will actively participate in online learning to further develop their understanding of the Autism Disorder and how it impacts the learning of these students. Specific applications will be made to practice by discussing different strategies to support students in the classroom setting. Throughout the course, we will focus on an overview of the disability, how Autism impacts language/emotions, social interactions, cognitive and sensory needs. This will be through reading sections of the book, *The Complete Guide to Asperger's Syndrome* by Tony Attwood as well as other readings and videos.

Course dates: June 1 - July 5

Cost: \$45 (member) or \$145 (non-member) | Available for 1 graduate credit through ASU

Facilitator: Jenny Shoen (Littleton Education Association)



Cultivating Classroom Conversations: Strategies for Meaningful Student Talk

Do you have a goal of shifting the balance from teacher talk time in class to student talk time? Are you curious about strategies you can "use now" in your classroom to get your students talking? Are you wanting to increase student-led discussions to allow students to be owners of the learning? This class will take you all the way from how to create a positive classroom culture, where student talk is welcome, all the way to the ultimate in student-led discussion: the Socratic seminar. Join me to pick up some practical strategies and skills that will make your teaching transform from "my class" to "our class."

Course dates: June 1 - July 12

Cost: \$135 (member) or \$235 (non-member) | Available for 3 graduate credits through ASU

Facilitator: Cindy Shapiro (Jefferson County Education Association)



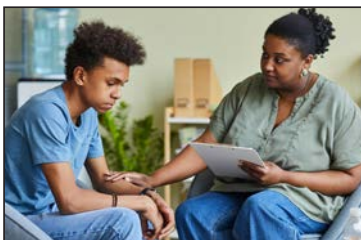
Cultures of Thinking in Action: Bringing the 10 Mindsets to Life

In this action-oriented book study, teachers will explore *Cultures of Thinking in Action* by Ron Ritchhart to discover how classroom culture shapes student learning and engagement. Each week, participants will read a chapter, implement a featured strategy in their own classrooms, and reflect on its impact. Through this cycle of reading, practice, and reflection, teachers will gain practical insights into how to cultivate a culture where thinking is valued, visible, and actively developed. By the end of the course, participants will have both a deeper understanding of the principles behind Cultures of Thinking and a set of classroom-tested practices that bring those principles to life.

Course dates: June 1 - July 12

Cost: \$135(member) or \$235 (non-member) | Available for 3 graduate credits through ASU

Facilitator: Cynthia Shapiro (Jefferson County Education Association)



Understanding Big Behaviors

Teachers, special service providers, and/or school professionals will actively participate in online learning to further develop their understanding of the origin of emotions, expand knowledge in the area of childhood brain development, analyze the effect of adverse childhood experiences on the brain, explore how emotions translate into behaviors, and learn how to manage big behaviors in the classroom.

Course dates: June 1 - July 5

Cost: \$90 (member) or \$190 (non-member) | Available for 2 graduate credit through ASU

Facilitator: Shannon Shearer (Cherry Creek Education Association)

All class dates are subject to change based on facilitator availability. All classes are subject to cancellation if fewer than five students enroll by the official class start date.



Restorative Practices in the Classroom

Teachers, special service providers, and/or school professionals will actively participate in online learning to further develop their understanding of restorative practices, including but not limited to conflict resolution, restorative circles, and the importance of relationship building as it pertains to education. Specific applications will be made to practice, as teachers will outline a lesson using the restorative circle model for their classroom.

Course dates: June 1 - July 5

*Cost: \$45 (member) or \$145 (non-member) | Available for 1 graduate credit through ASU
Facilitator: Shannon Shearer (Cherry Creek Education Association)*

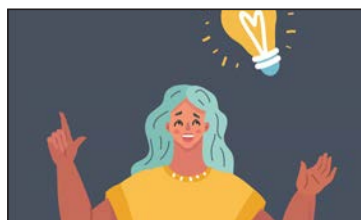


Conversations Around Gifted Education

Looking to engage with others around topics focused on gifted education, programming, and learners? Listen and watch from a menu of choices from 'Conversations with CAGT' of gifted experts and then engage with other participants through discussions and assignments. Topics will include motivation, perfectionism, twice-exceptionality, diversity, programming, and more. This course is designed to ignite your passion with supporting gifted learners whether you are new to the field or are already an accomplished educator.

Course dates: June 8 - July 5

*Cost: \$45 (member) or \$145 (non-member) | Available for 1 graduate credit through ASU
Facilitator: Rachel Graham (Estes Park Education Association)*



Navigating Controversial Topics in Schools

This course explores the themes and insights presented in Jonathan Haidt's "The Righteous Mind: Why Good People Are Divided by Politics and Religion" and will apply them to the educational context. Specifically examining how politics, religion, and other controversial topics can be managed in schools today at all grade levels.

Course dates: June 8 - August 2

*Cost: \$135 (member) or \$235 (non-member) | Available for 3 graduate credits through ASU
Facilitator: Katie Guerrero (Cherry Creek Education Association)*



What Happened to You?: Conversations on Trauma, Resilience, and Healing

"What Happened to You?" has helped to revolutionize our understanding of trauma and its impact on children's development and learning. This professional development course is designed for educators who want to deepen their understanding of trauma and learn practical strategies for creating a trauma-informed classroom. Participants will learn about the neurobiology of trauma, the impact of adverse childhood experiences (ACEs) on learning and behavior, and the importance of creating safe and supportive environments for all students. The development of practical strategies for creating a trauma-informed classroom, will include ways to build positive relationships with students, create a sense of safety and predictability, and promote self-regulation and coping skills.

Course dates: June 8 - July 19

*Cost: \$90 (member) or \$190 (non-member) | Available for 2 graduate credits through ASU
Facilitator: Katie Guerrero (Cherry Creek Education Association)*



The Playful Classroom: The Power of Play for All Ages

In this class, participants will learn about play in the classroom! You will study the research behind play and how it affects the brain, social skills, increase in productivity and self esteem, decrease in student behaviors and so much more. You will apply lessons from the text and our online activities in your own classrooms as a lab where you get to try all sort of new play-based strategies with students.

Course dates: June 8 - August 2

*Cost: \$90 (member) or \$190 (non-member) | Available for 2 graduate credits through ASU
Facilitator: Barb Pedrett (Cherry Creek Education Association)*



Keeping the Wonder: An Educator’s Guide to Magical, Engaging, and Joyful Learning

This book study and course is all about tapping into students’ innate curiosity and designing memorable and meaningful learning experiences that capture their interest and ignite their imaginations. The book is structured around four key elements to fuel engagement: surprise, curiosity, freedom, and inspiration. Keeping the Wonder offers practical strategies for K-12 educators that help them create lessons that are engaging and compelling. The four authors share their wealth of knowledge, research, and experience on how they keep wonder alive in the classroom.

Course dates: June 8 - August 2

Cost: \$135 (member) or \$235 (non-member) | Available for 3 graduate credits through ASU

Facilitator: Michelle Hagerman (Mesa Valley Education Association)



Teachers These Days: Stories and Strategies for Reconnection

The students we teach today are not the same students we taught ten years ago, five years ago, or even three years ago! Dr. Jody Carrington and Laurie McIntosh will take you on a journey through reconnection as it relates to the science of human development and theory. They will share stories from teachers walking the walk day in and day out. This course is for those who need a reminder that the work they are doing is powerful. It is important and it is shaping lives. This course will allow you to reflect deeply on your teaching practices, analyze misconceptions, delve into social-emotional learning, utilize strategies, and help you navigate some of the toughest times we are facing as teachers. It will help you reconnect with yourself as a professional and with your students. This course will touch on the hard conversations of trauma, grief, racism, violence, and loss.

Course dates: June 8 - August 2

Cost: \$135 (member) or \$235 (non-member) | Available for 3 graduate credits through ASU

Facilitator: Michelle Hagerman (Mesa Valley Education Association)



Supporting the Grieving Student

Teachers will actively participate in online learning to further develop their understanding of how grief and loss impact students in their classroom and learn practical steps they can take to support their students through this difficult life experience/transition. This course is appropriate for classroom teachers at all levels. Additionally, anyone in the educational setting who is currently or potentially will be supporting a grieving student could benefit from this course. Warning: this course covers sensitive material that could be triggering.

Course dates: June 8 - July 12

Cost: \$135 (member) or \$235 (non-member) | Available for 3 graduate credits through ASU

Facilitator: Shannon Kershaw (Littleton Education Association)



Trauma Stewardship: An Everyday Guide to Caring for Self While Caring for Others

This course will be a book study of *Trauma Stewardship, An Everyday Guide to Caring for Self While Caring for Others*. This book uses humor, research and personal reflections to discuss symptoms people experience when being exposed to trauma and the trauma of those they help. Through reflections, readings, and journals we will gain fresh, new strategies to stay present, balance our personal and professional lives, and most importantly keep from becoming burnt out and overwhelmed. The author, Laura van Dernoot Lipsky is a trauma social worker and educator with decades of experience in helping others, who spend their careers making the world a better place.

Course dates: June 8 - August 2

Cost: \$90 (member) or \$190 (non-member) | Available for 2 graduate credits through ASU

Facilitator: Laurie McPherson (Poudre Education Association)



Behavioral/
SPED Course

Best Practices for Inclusion in the General Education Setting

Teachers will actively participate in online learning to further develop their understanding of best practices for inclusion in the general education setting. This course is appropriate for teachers at any grade level who are looking to improve their understanding of how to best serve students with special needs in their classes, and offers practical strategies to modify and adapt our curriculum including strategies for co-teaching, and specific strategies for curricular accommodations and modifications.

Course dates: June 8 - July 26

Cost: \$135 (member) or \$235 (non-member) | Available for 3 graduate credit through ASU

Facilitator: Margaret Stockfish (Cherry Creek Education Association)



Behavioral/
SPED Course

Equitable Instruction for English Learners in the Content Area

Teachers will actively participate in online learning to further develop their understanding of how to support English Language Learners in the K-8 classroom. We will use this course as a book study for the textbook *Equitable Instruction for English Learners in the Content Areas*, by Valentina Gonzalez. Participants will be asked to take notes on each section of reading, answer discussion prompts, make journal entries and also use outside websites as practical resources for your classrooms.

Course dates: June 8 - July 26

Cost: \$135 (member) or \$235 (non-member) | Available for 3 graduate credit through ASU

Facilitator: Margaret Stockfish (Cherry Creek Education Association)



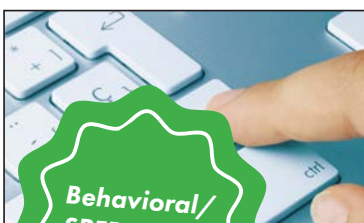
Powerful Teaching: Unleash the Science of Learning

In *Powerful Teaching: Unleash the Science of Learning*, learners will explore the most effective ways to increase learning through retrieval practice, spacing, interleaving, and feedback. Applying evidence based research from the course text to classrooms or educational settings, teachers will be empowered to increase attainment of learning outcomes in their students. Appropriate for elementary through secondary grade levels, participants will interact with other teachers to respond to reading, reflect upon their own practice, and reflect on application of concepts from the text to their own educational context.

Course dates: June 8 - July 12

Cost: \$90 (member) or \$190 (non-member) | Available for 2 graduate credits through ASU

Facilitator: Anne Sutton (Windsor-Severance Education Association)



Behavioral/
SPED Course

Read & Write for Education: Using the Assistive Technology Tool for Instruction and Learning

Educators will learn how to use and apply the powerful assistive technology tool, Read&Write for Education. The literacy support tool includes applications for reading comprehension, vocabulary, written expression, and research. Educators will actively participate in applying the tools for instruction as well as develop accommodations for student learning.

Course dates: June 8 - July 5

Cost: \$45 (member) or \$145 (non-member) | Available for 1 graduate credit through ASU

Facilitator: Erin Trendler (Boulder Valley Education Association)

All class dates are subject to change based on facilitator availability. All classes are subject to cancellation if fewer than five students enroll by the official class start date.



**Behavioral/
SPED Course**

Preparing Students with Disabilities for the Transition to Higher Education

Educators will actively engage in online learning to further develop their understanding of how to prepare students with disabilities for the transition to higher education. The course will emphasize the differences between support for students with disabilities in K-12 education versus those available in postsecondary education. Topics will include disability law, student roles and responsibilities, accommodations in higher education, issues around disability disclosure, and strategies to build self-advocacy. As a final project, participants will create a document of resources to share with students, families, and colleagues.

Course dates: June 8 - July 19

*Cost: \$135 (member) or \$235 (non-member) | Available for 3 graduate credits through ASU
Facilitator: Erin Trendler (Boulder Valley Education Association)*



**Behavioral/
SPED Course**

Neurodiversity-Affirming Schools: Transforming Practices So All Students Feel Accepted & Supported

Educators will engage in a book study using the text, *Neurodiversity Affirming Schools: Transforming Practices So All Students Feel Accepted & Supported* by Emily Kircher-Morris and Amanda Morin. The book explains the concept of neurodiversity and neurodivergent learning and communication styles. It also provides an overview of the principles of sensory regulation, social emotional learning, and Universal Design for Learning.

Course dates: June 8 - July 19

*Cost: \$135 (member) or \$235 (non-member) | Available for 3 graduate credits through ASU
Facilitator: Erin Trendler (Boulder Valley Education Association)*



Foundations of Classroom Management

Students learn best in environments where they feel respected, supported, and responsible for their own behavior. While reading *Teaching with Love and Logic* by Jim Fay and Charles Fay, participants will explore practical, relationship-based strategies for creating positive classroom environments that promote student accountability, empathy, and intrinsic motivation. This course examines how teachers can guide student behavior with calm consistency while maintaining strong, caring relationships.

Course dates: June 15 - August 2

*Cost: \$135 (member) or \$235 (non-member) | Available for 3 graduate credits through ASU
Facilitator: Sarah Adams (Jefferson County Education Association)*



From Surviving to Thriving: Actionable Steps for Self-Care, Health, and Wellness for Teachers and Educators

What if educator wellness wasn't just about managing stress but about living your best life? Grounded in the work of Tina Boogren and Timothy D. Kanold and inspired by *Educator Wellness*, this course helps educators strengthen the four dimensions of wellness: physical, emotional, intellectual, and social. Through guided reflection, self-assessments, and practical strategies, you'll build small, sustainable habits that protect your energy, reconnect you to your purpose, and help you move from simply getting through the day to truly thriving (in and out of school).

Course dates: June 15 - July 19

*Cost: \$90 (member) or \$190 (non-member) | Available for 2 graduate credits through ASU
Facilitator: Stacie Albi (District Twelve Educators' Association)*

All class dates are subject to change based on facilitator availability. All classes are subject to cancellation if fewer than five students enroll by the official class start date.



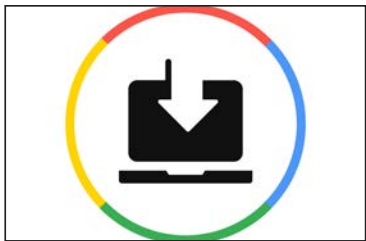
Google ABCs: Classroom, Forms, Sites

This course provides educators with an opportunity to develop and/or strengthen their foundational understanding of Google Classroom, Google Forms, and Google Sites. Through online learning, participants will build practical skills to create, organize, distribute, and manage digital learning experiences while enhancing communication and collaboration with students, families, and colleagues. Educators will learn to effectively use Google Classroom to create, distribute, and assess assignments and formative assessments, as well as integrate curriculum resources and tools such as the “Share to Classroom” Chrome extension. Participants will also explore how to design and implement Google Forms for formative assessment, surveys, and data collection, with an emphasis on seamless integration within Google Classroom. In addition, educators will develop skills to plan, design, and maintain Google Sites as a centralized platform for sharing classroom information and resources. Emphasis will be placed on creating engaging, organized, and accessible digital spaces to support communication and learning.

Course dates: June 15 - July 26

Cost: \$135 (member) or \$235 (non-member) | Available for 3 graduate credits through ASU

Facilitator: Elissa Brost (Colorado Springs Education Association)



Google ABCs: Docs, Sheets, Slides

This course provides educators with an opportunity to develop and/or strengthen their foundational understanding of Google Workspace tools, including Google Docs, Google Slides, and Google Sheets. Through online learning, participants will build practical skills to create, organize, distribute, and collaborate with colleagues and students across these platforms. Educators will learn to effectively use essential features of each tool for both professional productivity and classroom instruction. Emphasis will be placed on creating dynamic documents, designing engaging and customized presentations beyond standard templates, and utilizing spreadsheets for organization and data-driven tasks. Participants will also explore how these tools can be implemented within Google Classroom as part of a workshop model to support student learning, collaboration, and engagement.

Course dates: June 15 - July 26

Cost: \$135 (member) or \$235 (non-member) | Available for 3 graduate credits through ASU

Facilitator: Elissa Brost (Colorado Springs Education Association)



Google ABCs: Drive, Keep, Vids

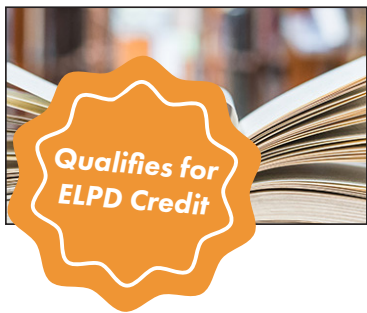
This course provides educators with foundational knowledge and skills in the use of Google Drive, Google Keep, and Google Vids, with an emphasis on organization and effective digital workflow practices. Through online learning, participants will develop the ability to efficiently manage, store, and share digital resources using Google Drive, apply organizational and productivity strategies through Google Keep, and create basic instructional and communication videos using Google Vids. Emphasis will be placed on implementing best practices for digital organization, enhancing professional efficiency, and supporting instructional effectiveness. This course is designed for educators seeking to establish or strengthen foundational skills in managing and utilizing digital tools within an educational setting.

Course dates: June 15 - July 26

Cost: \$135 (member) or \$235 (non-member) | Available for 3 graduate credits through ASU

Facilitator: Elissa Brost (Colorado Springs Education Association)

All class dates are subject to change based on facilitator availability. All classes are subject to cancellation if fewer than five students enroll by the official class start date.



The Book Whisperer: Awakening the Inner Reader in Every Child

This course will be a book study of Donalyn Miller’s book *The Book Whisperer: Awakening the Inner Reader in Every Child*. Participants will discuss and make plans of implementation to engage a classroom of readers. Participants will also walk away with easily-applicable resources to use and/ or modify in their classroom.

Course dates: June 15 - July 12

Cost: \$45 (member) or \$145 (non-member) | Available for 1 graduate credit through ASU

Facilitator: Elissa Brost (Colorado Springs Education Association)



The Science of Learning: Make it Stick

You’ve likely heard of the Science of Reading, but have you explored the Science of Learning? The international bestseller *Make It Stick* draws on the latest research in cognitive science to present powerful, evidence-based strategies that enhance memory and learning. This influential book has helped millions of educators, students, and lifelong learners adopt proven techniques to learn more effectively and retain knowledge longer. In this course, you’ll discover how to move students beyond rote memorization toward deeper conceptual understanding and real-world application. Learn how to tap into students’ metacognition and explore the science behind strategies like retrieval practice, spacing, interleaving, and more. These approaches are adaptable to any subject area and grade level and can transform how learning happens in your classroom.

Course dates: June 15 - August 2

Cost: \$135 (member) or \$235 (non-member) | Available for 3 graduate credits through ASU

Facilitator: Katie Main (Denver Classroom Teachers’ Association)



Yoga in the Classroom

Participants will explore ways to bring yoga into the classroom to help students learn to combine breath and movement in a school setting. Yoga provides a great opportunity to learn brain breaks that are movement based while also incorporating balance, breath, coordination and self awareness.

Course dates: June 15 - August 2

Cost: \$135 (member) or \$235 (non-member) | Available for 3 graduate credits through ASU

Facilitator: Jan Pratt (Colorado Education Association - Retired)



Build an Awesome Class Website with Google Sites

Google Sites is a collaborative tool that allows you to easily create a website to publish course content and to share class materials with students and guardians. Sites offer an easy way to create pages and insert digital media so there is no need to know HTML or other programming languages, Google has mastered WYSIWYG (“what you see is what you get”). This course is designed to help educators build and design a website in Google Sites (or to revise their current Site).

Course dates: June 15 - July 12

Cost: \$45 (member) or \$145 (non-member) | Available for 1 graduate credit through ASU

Facilitator: Erin-Rose Schneider (East Grand Education Association)



The Together Teacher: Mastering Organization in the Classroom

This course explores *The Together Teacher* by Maia Heyck-Merlin, providing educators with practical tools to enhance organization, productivity, and time management. Through reading, discussions, reflective journaling, and implementation, participants will develop personalized systems to streamline planning, communication, and workflow. The course emphasizes strategies for balancing professional responsibilities with personal well-being, equipping teachers with sustainable habits for long-term success. By the end of the course, educators will have a customized organizational framework to increase efficiency and reduce stress in their daily practice.

Course dates: February 8 - March 29

Cost: \$90 (member) or \$190 (non-member) | Available for 2 graduate credits from ASU

Facilitator: Julie Arnold (Johnstown-Milliken Education Association)



The Logistics of Becoming a Parent: Navigating FMLI, Insurance, and Other Paperwork

Teachers will actively participate in online learning to develop their understanding of resources and benefits available to new parents in the State of Colorado. Topics include FMLA, FMLI, Insurance, Paperwork, and Child Care.

Course dates: June 15 - July 26

Cost: \$135 (member) or \$235 (non-member) | Available for 3 graduate credits through ASU

Facilitator: Shauna Zimmerman (Summit County Education Association)



Unlocking Learning: Designing Educational Escape Room Experiences

In this course, educators will learn how to create captivating and immersive escape room-like activities for students. Through a blend of theory and practical application, participants will explore the principles of game-based learning, puzzle design, and narrative development to craft educational escape room experiences tailored to their curriculum and student needs. From brainstorming themes to designing clues and puzzles, educators will acquire the skills and strategies necessary to engage students in collaborative problem-solving, critical thinking, and content mastery.

Course dates: June 22 - July 19

Cost: \$90 (member) or \$190 (non-member) | Available for 2 graduate credits through ASU

Facilitator: Caroline Davis (District Twelve Educators' Association)



English
Learner
PD Course

Developing Academic Vocabulary in the Diverse Classroom

Explore basic principles for developing academic vocabulary in your classroom. With a lens on supporting diverse learners, this course will cover a variety of topics that enhance a student's academic vocabulary acquisition. This includes considering a student's socio-cultural influences, their individual learning styles, and prior vocabulary knowledge. Are students understanding the academic vocabulary that we are teaching them? What are some tools used to effectively review and support academic vocabulary instruction? Explore these questions in this class as we foster academic vocabulary acquisition for all students.

Course dates: June 22 - July 26

Cost: \$90 (member) or \$190 (non-member) | Available for 2 graduate credits through ASU

Facilitator: Caroline Davis (District Twelve Educators' Association)



Behavioral/
SPED Course

Recognizing and Coping with Sensory Processing Differences in the Classroom

Teachers will actively participate in online learning to further develop their understanding of sensory processing disorders in the classroom. We will be exploring the eight senses (touch, smell, taste, hearing, vision, vestibular, proprioception, and interoception) and how to recognize when a student is having difficulty tuning in or filtering out information in the school environment. We will also learn how to help these students in the classroom with simple accommodations and strategies.

Course dates: June 22 - July 20

Cost: \$90 (member) or \$190 (non-member) | Available for 2 graduate credits through ASU

Facilitator: Jenny Frank (Cherry Creek Education Association)



Behavioral/
SPED Course

Brain Development & the Impact of Trauma

Course participants will actively participate online to learn about typical brain development. Through the coursework, participants will then begin to learn about trauma and the impact it has on brain development with a specific focus on learning. Connections to the classroom will also be offered to help participants reflect on their practice and think of how they can implement trauma-informed practices within their work environment for student success.

Course dates: June 22 - August 2

Cost: \$135 (member) or \$235 (non-member) | Available for 3 graduate credits through ASU

Facilitator: Heather Jung (Denver Classroom Teachers' Association)



From Surface to Depth: Using Thinking Routines to Transform Classroom Talk

This course explores how thinking routines can deepen student understanding and foster richer classroom dialogue. Through hands-on practice, teachers will explore a variety of routines designed to make student thinking visible and meaningful. Each week, participants will select, implement, and reflect on specific routines in their own classrooms, building a toolkit of strategies that promote active engagement, curiosity, and deeper learning. By the end of the course, teachers will be equipped to create a classroom culture where thinking and dialogue thrive.

Course dates: June 22 - August 2

Cost: \$90 (member) or \$190 (non-member) | Available for 2 graduate credits through ASU

Facilitator: Cynthia Shapiro (Jefferson County Education Association)



Hacking School Discipline: 9 Ways to Create a Culture of Empathy and Responsibility based on Restorative Justice

In this book study, educators will learn 9 ways to create a culture of empathy and responsibility using restorative justice and other techniques. They will learn how to not only change behaviors by replacing traditional school discipline practices that do not work, but transform students into productive citizens, accountable for their own actions.

Course dates: June 28 - July 26

Cost: \$45 (member) or \$145 (non-member) | Available for 1 graduate credit through ASU

Facilitator: Stephanie Fast (Littleton Education Association)



Mastering the Art of Rapport: The Ultimate Guide to Building Meaningful Connections

A class for counselors and educators of all types--work on the interpersonal skills that drive so much of our work: active listening, finding common ground with anyone, using body language and mirroring to build comfort and trust and the importance of empathy and authenticity. The learnings can be applied to relationships with both students and colleagues.

Course dates: June 28 - July 26

Cost: \$45 (member) or \$145 (non-member) | Available for 1 graduate credit through ASU

Facilitator: Stephanie Fast (Littleton Education Association)



Mindset: The New Psychology of Success

This course will examine belief systems about learning and how failures and challenges can be reframed as opportunities for growth. Strategies and tools will be developed for creating a culture of perseverance in classrooms. Participants will reflect on their current practices around mindset and create an implementation plan for their educational environment that focuses on growth mindset.

Course dates: June 29 - July 27

Cost: \$45 (member) or \$145 (non-member) | Available for 1 graduate credit through ASU

Facilitator: Amy Bohem (Westminster Education Association)



Math Games & Puzzles: Bringing the Fun Back into Learning Mathematics!

In this course, teachers will explore how math games and puzzles can bring the fun back into learning (and teaching) mathematics! Through discussions, reflections and playing, participants will discover how incorporating math games and puzzles can help engage students in math in a non-intimidating way. Participants will also connect math games and puzzles to the Standards for Mathematical Practices (SMP). This course is appropriate for all K-12 math teachers.

Course dates: June 29 - August 2

Cost: \$45 (member) or \$145 (non-member) | Available for 1 graduate credit through ASU

Facilitator: Lindsey Mater (Poudre Education Association)

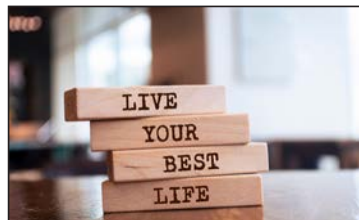


Mental Health for Our Students: The Top 5 Struggles Our Students Face Today

Students today are facing such a different set of struggles than we did when we were in school. This course focuses and introduces the five major topics that kids deal with today including (but not limited to) bullying, mental health, suicide, stress, and inequity. In this class we will work to understand and find a set of tools to help our students navigate through this new age with support from us. No books needed, all materials are included.

Course dates: June 29 - August 2

*Cost: \$90 (member) or \$190 (non-member) | Available for 2 graduate credits through ASU
Facilitator: Elizabeth Sedalnick (District Twelve Educators' Association)*



How to Live Your Best Life: A Book Study

Ever felt stuck in your life? The world is out to get you? You're not alone! This course is designed to ask difficult questions to help you get yourself unstuck, and to challenge your thinking about your life, patterns of thinking, and situations. This is a book study has been created to help you start making changes immediately. As a side note, the book is *The Subtle Art of Not Giving a F**, by Mark Manson, and the first chapter has quite a lot of bad words in it. The book settles down quite a bit after the first chapter, and has very good insight into human behavior.

Course dates: June 9 - July 26

*Cost: \$90 (member) or \$190 (non-member) | Available for 2 graduate credits through ASU
Facilitator: Elizabeth Sedalnick (District Twelve Educators' Association)*



Build a Culture of Feedback

Teacher learners will discover how to cultivate a rich culture of feedback in their classroom and school to improve student and teacher learning and efficacy. Each week will focus on a different element of feedback: foundations, teacher to student, student to student, student to teacher, and educator to educator. Participants will be presented with a variety of instructional techniques that can be directly applied or modified for all grade levels, K-12.

Course dates: June 29 - August 2

*Cost: \$90 (member) or \$190 (non-member) | Available for 2 graduate credits through ASU
Facilitator: Anne Sutton (Windsor-Severance Education Association)*



Fostering Personalized Learning in the Classroom

Fostering Personal Learning in the classroom focuses on empowering teachers to cultivate a personalized learning environment that supports each student's unique needs, interests, and learning styles. This class will explore strategies for differentiating instruction, setting individualized goals, and creating opportunities for student voice and choice. Providing practical tools for fostering student ownership of their learning, promoting self-directed learning, and using formative assessments to tailor instruction.

Course dates: July 1 - July 31

*Cost: \$90 (member) or \$190 (non-member) | Available for 2 graduate credits through ASU
Facilitator: Amanda McIntyre (District Twelve Educators' Association)*



Technology Tools for English Language Learners

In this course, we will explore and apply educational technology tools to increase the engagement and achievement of ELL students. We'll focus on tools that facilitate communication, content delivery, literacy development, academic language growth, and assessments.

Course dates: July 1 - July 31

*Cost: \$90 (member) or \$190 (non-member) | Available for 2 graduate credits through ASU
Facilitator: Amanda McIntyre (District Twelve Educators' Association)*



Balanced Educator: A Holistic Approach to Wellbeing for Sustained Success

In this course, we embark on a journey to empower educators through a comprehensive exploration of wellness strategies. Delve into the intricacies of physical, mental, emotional, and social wellbeing, as we provide practical tools and insights tailored specifically for the demands of the education profession. We'll uncover the importance of self-care practices, stress management techniques, and mindfulness exercises to enhance resilience and vitality. From nurturing healthy habits to fostering supportive communities, discover how to create a balanced lifestyle that promotes both personal and professional fulfillment.

Course dates: July 5 - August 2

Cost: \$45 (member) or \$145 (non-member) | Available for 1 graduate credit through ASU

Facilitator: Julie Arnold (Johnstown-Milliken Education Association)



English
Learner
PD Course

Purposeful Play: A Teacher's Guide to Igniting Deep and Joyful Learning Across the Day

Educators will participate in an online book study to further develop their understanding of the importance of play in their classrooms. The authors assert, "Play is one type of environment where children can be rigorous in their learning." At the end of this course, teachers will understand and be able to incorporate play as its own method of instruction and align it with standards.

Course dates: July 6 - August 2

Cost: \$45 (member) or \$145 (non-member) | Available for 1 graduate credit through ASU

Facilitator: Barb Pedrett (Cherry Creek Education Association)



Going Deeper in Discussions: Socratic Seminar

Elevate your teaching with this advanced Socratic Seminars course! Discover dynamic discussion strategies, exploring diverse seminar styles like partner, fishbowl, hot seat, and multi-group setups, along with planning templates for small groups. You'll master question writing, delving into question types, extensive practice, and even leveraging AI tools like ChatGPT for seamless planning. The course emphasizes differentiation to ensure every student is engaged and challenged. Learn to build a vibrant culture of risk-taking and empower students through effective self-evaluation. Practical resources, including 'just-in-case questions,' will equip you to expertly guide any discussion.

Course dates: July 6 - August 2

Cost: \$90 (member) or \$190 (non-member) | Available for 2 graduate credits through ASU

Facilitator: Cindy Shapiro (Jefferson County Education Association)



Behavioral/
SPED Course

Reaching Gen Z & Gen Alpha: Teaching the Most Distracted Generation

This course is designed to equip educators with research-informed, classroom-ready strategies to effectively reach and teach the most distracted generation. Participants will examine attention science, motivation psychology, digital culture, identity formation, and classroom design principles that increase engagement without sacrificing rigor.

Course dates: July 7 - August 2

Cost: \$90 (member) or \$190 (non-member) | Available for 2 graduate credits through ASU

Facilitator: Edmond Bedu-Annan (District Twelve Educators' Association)



Colorado Professional Institute for Learning Online Together

www.ceacopilot.org



Uncovering the Logic of English

In this book, participant will discover the LOGIC of English. Have you found yourself asking why English words are spelled the way they are? Why is there a silent e in have? Are you looking for ways to improve your phonic instruction? Would you like a new approach to teaching “sight words?” This book will take participants on a discovery of English and how it really is a logical language. Participants will discuss their learning in discussion boards, reflect on the material, apply learning in assignments, and get feedback from the facilitator.

Course dates: March 23 - April 3

Cost: \$90 (member) or \$190 (non-member) | Available for 2 graduate credits through ASU

Facilitator: Facilitator: Rachel Graham (Estes Park Education Association)

Building Reading Skills for Older Students (4th-12th) Who Struggle: Strategies for Supporting Intervention, Special Education, and Multilingual Learners

In this class we will focus on 4 action oriented research based recommendations from the IES (Institute of Education Sciences, March 2022). We’ll learn specific ways to effectively use them in our practice to support struggling readers. The research is based on students in 4th-9th graders, but strategies are appropriate for high school teachers as well. This class will include considerations for diverse populations of students who struggle with reading, including students with disabilities and multilingual learners.

Course dates: March 23 - May 3

Cost: \$90 (member) or \$190 (non-member) | Available for 2 graduate credits through ASU

Facilitator: Erin Grodeska (Aurora Education Association)



Behavioral/
SPED Course

English
Learner
PD Course

Better Together: Realistic Co-teaching Strategies for Inclusive and Multilingual Classrooms

Participants will explore practical co-teaching models, planning tools, and communication strategies that make shared instruction both manageable and meaningful. While traditionally associated with special education providers, this course expands the definition of co-teaching to include partnerships between general education and English language development teachers, emphasizing how collaboration can elevate access and engagement for multilingual learners. Through reflection, discussion, and ready-to-use planning resources, educators will leave with realistic strategies to strengthen collaboration and classroom impact.

Course dates: March 23 - May 3

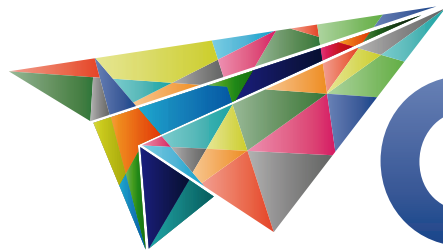
Cost: \$90 (member) or \$190 (non-member) | Available for 2 graduate credits through ASU

Facilitator: Erin Grodeska (Aurora Education Association)



Behavioral/
SPED Course

English
Learner
PD Course



COpilot

Colorado Professional Institute for Learning Online Together

www.ceacopilot.org